



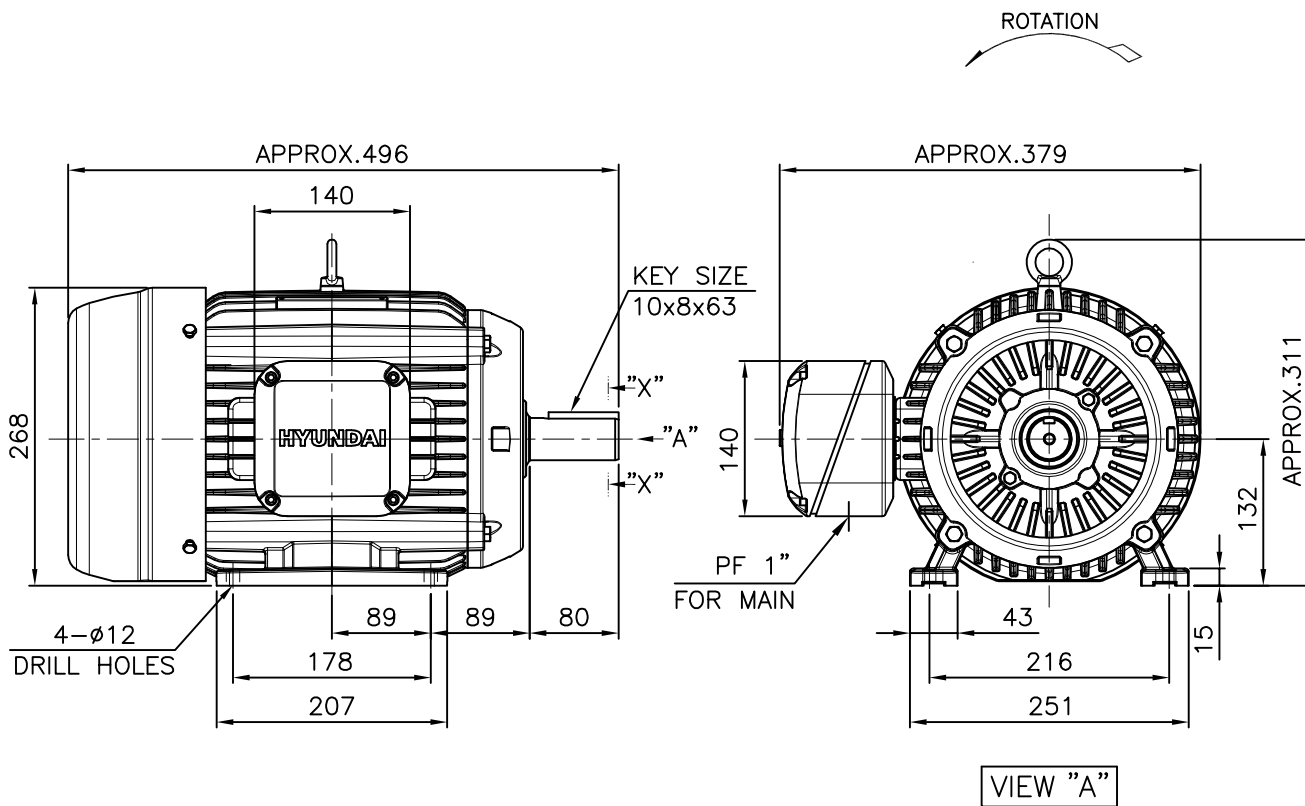
<p>Note: Others not mentioned in this data sheet shall be in accordance with maker standard.</p> <p>Above technical data are only design values and shall be guaranteed with tolerance of applicable standard.</p> <p>Inspection and performance test shall be maker standard, if not mentioned.</p> <p>* In case of Inverter-Fed Motor, performance data is based on sine wave tests.</p> <p>** The data are based on rated voltage &amp; frequency, and data are expressed as a percentage of full load value.</p>		Made in Vietnam
HEES W230-131-1 * In case of Inverter or V.V.V.F Motor:Performance data is based on sine wave tests.		A4(210mm X 297mm)

본 도면은 현대일렉트릭(주) 재산이므로  
허가없이 복사할 수 없음 (취급주의)

THIS DRAWING IS PROPRIETARY TO HYUNDAI ELECTRIC. NO PART OF THIS DRAWING  
MAYBE REPRODUCED WITHOUT THE PERMISSION OF HYUNDAI ELECTRIC.

1	2	3	4
▽	50S	REV	DATE
▽▽	12.5S		
▽▽▽	3.2S		
▽▽▽▽	0.4S		

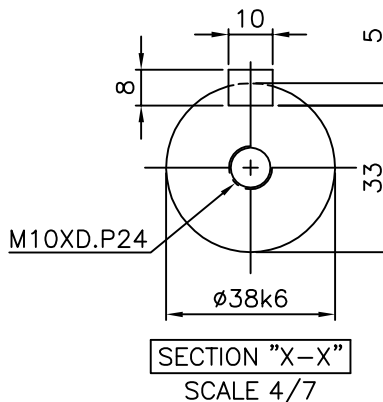
REVD BY	CHKD BY	CHKD BY	APPD BY
---------	---------	---------	---------



### NOTE

1.TOLERANCE :

CENTER HEIGHT	132	$\begin{smallmatrix} 0 \\ -0.5 \end{smallmatrix}$
BASE HOLES	Ø12	$\begin{smallmatrix} +0.43 \\ 0 \end{smallmatrix}$
SHAFT DIAMETER	Ø38	$\begin{smallmatrix} +0.018 \\ +0.002 \end{smallmatrix}$
KEYWAY WIDTH	10	$\begin{smallmatrix} 0 \\ -0.036 \end{smallmatrix}$
KEYWAY DEPTH	5	$\begin{smallmatrix} +0.2 \\ 0 \end{smallmatrix}$
KEY WIDTH	10	$\begin{smallmatrix} 0 \\ -0.036 \end{smallmatrix}$
KEY HEIGHT	8	$\begin{smallmatrix} 0 \\ -0.090 \end{smallmatrix}$



APPD BY	S.K.HAN	UNIT	mm	SUBJECT	KS, IEC Fr.132M	DWG SIZE
CHKD BY	S.Y.KIM	SCALE	1/7			A4 ( 1:7 )
CHKD BY	I.K.KIM	PROJEC'N	3각법 (3rd Angle)	TITLE	OUTLINE	
DSND BY	S.H.LEE	DATE	2019.06.17			
HYUNDAI ELECTRIC				REF. NO		Sheet No. of
				DWG NO	LM-T1133B3PLV01	Revision No. 0