

AC INDUCTION MOTOR DATA SHEET

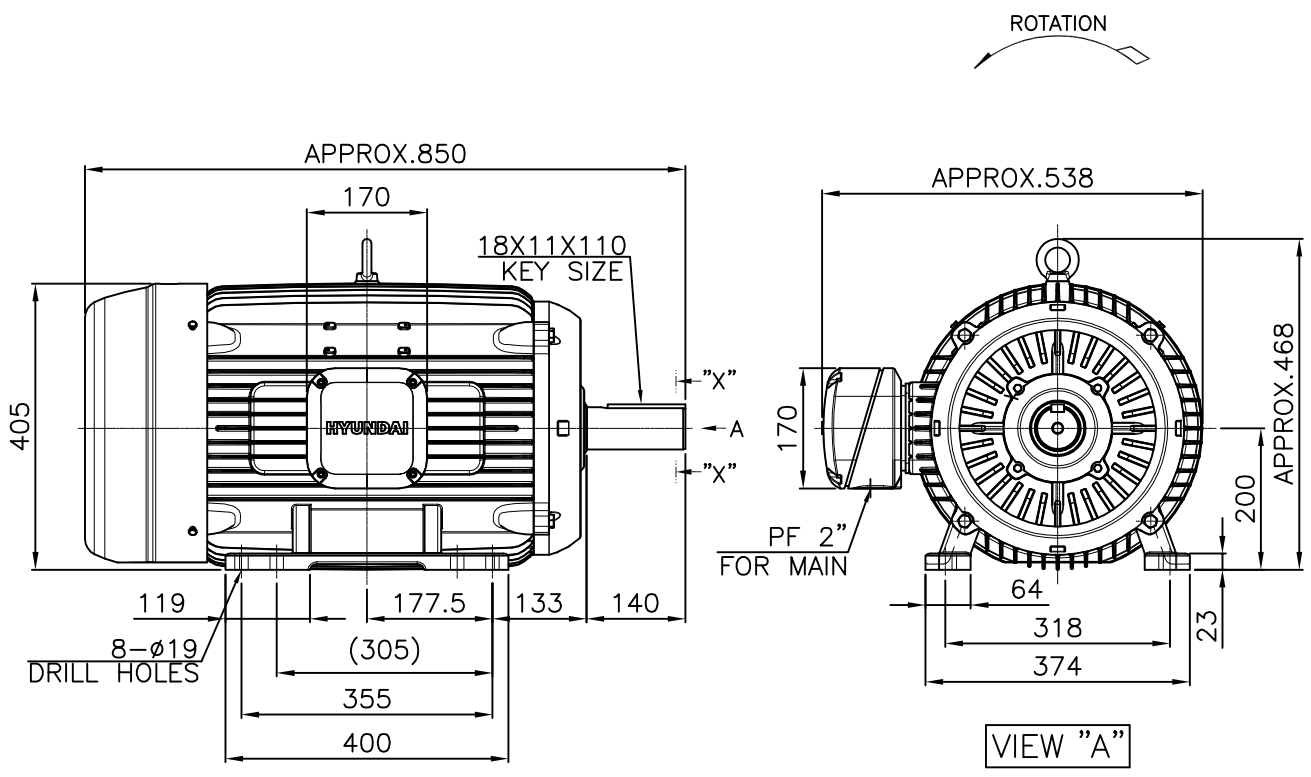
Model No.or RFQ No.		Item No.		Rev. No.		[0]							
Project Name		Project No.		Quantity		set							
GENERAL SPECIFICATION				PERFORMANCE DATA									
Frame Size		200LL		Rated Output		37 kW 50 HP							
Type		HLP-37/6		Number of Poles		6							
Enclosure(Protection)		Totally Enclosed (IP55)		Rotor Type		Squirrel Cage							
Method of Cooling		IC411(FC)		Starting Method*		<input checked="" type="checkbox"/> D.O.L <input type="checkbox"/> Y-Δ							
Rated Frequency		60 Hz		Rated Voltage		440 V 380 V 220 V							
Number of Phases		3		Current		Full Load 64.5 A 74.7 A 129.0 A							
Insulation Class		<input checked="" type="checkbox"/> F <input type="checkbox"/> B <input type="checkbox"/> H		Locked-rotor**		750 % 750 % 750 %							
Temp. Rise at full load (by resistance method)		at 1.0 S.F 80 °C		Efficiency									
Motor Location		<input checked="" type="checkbox"/> Indoor <input type="checkbox"/> Outdoor		50% Load		94.0 %							
Altitude		Less than 1000m		75% Load		94.3 %							
Relative Humidity		Less than 80 %		100% Load		94.1 %							
Ambient Temp.		40 °C MAX.		Power Factor(p.u)									
Duty Type		Continuous(S1)		50% Load		0.685							
Service Factor		1.15		75% Load		0.765							
Mounting		<input checked="" type="checkbox"/> B3 <input type="checkbox"/> B5 <input type="checkbox"/> V1 <input type="checkbox"/> B3/B5		100% Load		0.800							
Bearing		Type Anti-Friction		Speed at Full Load		1175 r.p.m							
		DE/N-DE 6313ZC3 / 6212ZC3		Torque									
		Lubricant Grease(Polyrex-EM)		Full Load		30.7 kg.m							
External Thrust		Not applicable		Locked-rotor**		160 %							
Coupling Method		<input checked="" type="checkbox"/> Direct <input type="checkbox"/> V-Belt		Breakdown**		210 %							
Shaft Extension		<input checked="" type="checkbox"/> Single <input type="checkbox"/> Double		Moment of Inertia (J)									
Terminal Box		Main <input type="checkbox"/> Steel <input checked="" type="checkbox"/> Cast Iron		Load(Max.)		67.47540426 kg·m ²							
		Aux. <input type="checkbox"/> Yes <input checked="" type="checkbox"/> No		Motor		0.781 kg·m ²							
		Location Refer to Outline Drawing		Sound Pressure Level (No-load & mean value at 1m from motor)		68 dB(A)							
Application				Vibration		2.2 mm/sec(r.m.s)							
Area classification		Non-Hazardous		Permissible number of consecutive starts		Cold 3 times							
Type of Ex-Protection		Not applicable		Hot		2 times							
Applicable Standard		KS, IEC, NEMA MG1 Part30(Vpeak)		Paint		Munsell No. Panton279C							
ACCESSORIES				SUBMITTAL DRAWING									
				Outline Dimension Drawing		Motor Weight(Approx.)							
				B3		LM-T1207B3PLV01	320 kg						
				B5			kg						
				V1			kg						
				B3/B5			kg						
				Main T-Box Ass'y		3M-145864							
REMARK													
				* .Premium Efficiency(IE3)									
				* .For use on PWM VFD 10:1VT,3:1CT@1.0S.F&F Temp.rise									
SPARE PARTS				Date		DSND		CHKD		CHKD		APPD	
				2018-11-23		R.G. KIM		---		O.J. KIM		S.K.HAN	

Note: Others not mentioned in this data sheet shall be in accordance with maker standard. Made in Vietnam
 Above technical data are only design values and shall be guaranteed with tolerance of applicable standard.
 Inspection and performance test shall be maker standard, if not mentioned.
 * In case of Inverter-Fed Motor, performance data is based on sine wave tests.
 ** The data are based on rated voltage & frequency, and data are expressed as a percentage of full load value.

본 도면은 현대일렉트릭(주) 재산이므로
허가없이 복사할 수 없음 (취급유의)

THIS DRAWING IS PROPRIETARY TO HYUNDAI ELECTRIC. NO PART OF THIS DRAWING
MAYBE REPRODUCED WITHOUT THE PERMISSION OF HYUNDAI ELECTRIC.

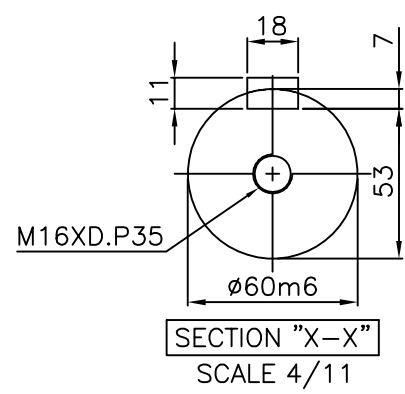
▽	50S	REV	DATE	CONTENTS	REV'D BY	CHKD BY	CHKD BY	APPD BY
▽▽	12.5S							
▽▽▽	3.2S							
▽▽▽▽	0.4S							



NOTE

1.TOLERANCE :

CENTER HEIGHT	200	$\begin{matrix} 0 \\ -0.5 \end{matrix}$
BASE HOLES	$\phi 19$	$\begin{matrix} +0.52 \\ 0 \end{matrix}$
SHAFT DIAMETER	$\phi 60$	$\begin{matrix} +0.030 \\ +0.011 \end{matrix}$
KEYWAY WIDTH	18	$\begin{matrix} 0 \\ -0.043 \end{matrix}$
KEYWAY DEPTH	7	$\begin{matrix} +0.2 \\ 0 \end{matrix}$
KEY WIDTH	18	$\begin{matrix} 0 \\ -0.043 \end{matrix}$
KEY HEIGHT	11	$\begin{matrix} 0 \\ -0.110 \end{matrix}$



APPD BY	S.K.HAN	UNIT	mm	SUBJECT	KS, IEC Fr.200LL-4~20P	DWG SIZE	A4 (1:11)
CHKD BY	S.Y.KIM	SCALE	1/11	TITLE	OUTLINE		
CHKD BY	I.K.KIM	PROJEC'N	3각법(3rd Angle)	REF. NO		Sheet No.	of
DSND BY	S.H.LEE	DATE	2019.06.17	DWG NO	LM-T1207B3PLV01	Revision No.	0