



AC INDUCTION MOTOR DATA SHEET

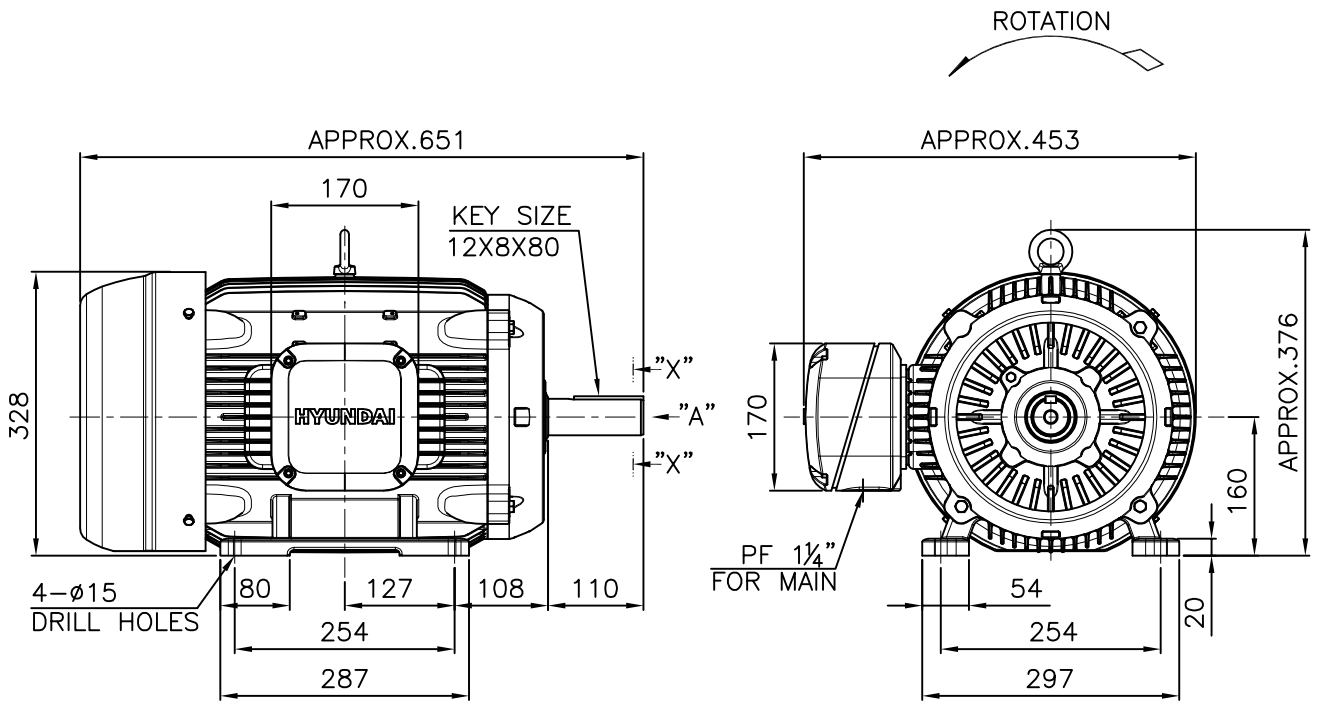
Model No.or RFQ No.		Item No.		Rev. No.	[0]
Project Name		Project No.		Quantity	set
GENERAL SPECIFICATION			PERFORMANCE DATA		
Frame Size	180M	Rated Output	15 kW	20 HP	
Type	HLP-15/6	Number of Poles	6		
Enclosure(Protection)	Totally Enclosed (IP55)	Rotor Type	Squirrel Cage		
Method of Cooling	IC411(FC)	Starting Method*	<input checked="" type="checkbox"/> D.O.L	<input type="checkbox"/> Y-Δ	
Rated Frequency	60 Hz	Rated Voltage	440 V	380 V	220 V
Number of Phases	3	Current	Full Load	27.9 A	32.3 A
Insulation Class	<input checked="" type="checkbox"/> F <input type="checkbox"/> B <input type="checkbox"/> H	Locked-rotor**	750 %	750 %	750 %
Temp. Rise at full load (by resistance method)		Efficiency			
at 1.0 S.F	80 °C	50% Load	88.7 %		
Motor Location	<input checked="" type="checkbox"/> Indoor <input type="checkbox"/> Outdoor	75% Load	91.7 %		
Altitude	Less than 1000m	100% Load	91.7 %		
Relative Humidity	Less than 80 %	Power Factor(p.u)			
Ambient Temp.	40 °C MAX.	50% Load	0.645		
Duty Type	Continuous(S1)	75% Load	0.730		
Service Factor	1.15	100% Load	0.770		
Mounting	<input checked="" type="checkbox"/> B3 <input type="checkbox"/> B5 <input type="checkbox"/> V1 <input type="checkbox"/> B3/B5	Speed at Full Load	1175 r.p.m		
Bearing	Type	Anti-Friction	Torque		
	DE/N-DE	6312ZZC3 / 6310ZZC3	Full Load	12.4 kg.m	
	Lubricant	Grease(Polyrex-EM)	Locked-rotor**	150 %	
External Thrust	Not applicable		Breakdown**	230 %	
Coupling Method	<input checked="" type="checkbox"/> Direct <input type="checkbox"/> V-Belt	Moment of Inertia (J)			
Shaft Extension	<input checked="" type="checkbox"/> Single <input type="checkbox"/> Double	Load(Max.)	27.35489362 kg.m ²		
Terminal Box	Main	<input type="checkbox"/> Steel <input checked="" type="checkbox"/> Cast Iron	Motor	0.257 kg.m ²	
	Aux.	<input type="checkbox"/> Yes <input checked="" type="checkbox"/> No	Sound Pressure Level (No-load & mean value at 1m from motor)		
	Location	Refer to Outline Drawing		68 dB(A)	
Application		Vibration	2.2 mm/sec(r.m.s)		
Area classification	Non-Hazardous	Permissible number of consecutive starts	Cold	3 times	
Type of Ex-Protection	Not applicable	Hot	2 times		
Applicable Standard	KS, IEC, NEMA MG1 Part30(Vpeak)	Paint	Munsell No.	Panton279C	
ACCESSORIES		SUBMITTAL DRAWING			
		Outline Dimension Drawing		Motor Weight(Approx.)	
		B3	LM-T1183B3PLV01	172 kg	
		B5		kg	
		V1		kg	
		B3/B5		kg	
		Main T-Box Ass'y	3M-145860		
SPARE PARTS		REMARK			
		* .Premium Efficiency(IE3)			
		* .For use on PWM VFD 10:1VT,3:1CT@1.0S.F&F Temp.rise			
		Date	DSND	CHKD	CHKD
		2018-11-23	R.G. KIM	---	O.J. KIM
					APPD
					S.K.HAN

Note: Others not mentioned in this data sheet shall be in accordance with maker standard. Made in Vietnam
 Above technical data are only design values and shall be guaranteed with tolerance of applicable standard.
 Inspection and performance test shall be maker standard, if not mentioned.
 * In case of Inverter-Fed Motor, performance data is based on sine wave tests.
 ** The data are based on rated voltage & frequency, and data are expressed as a percentage of full load value.

본 도면은 현대일렉트릭(주) 재산이므로 허가없이 복사할 수 없음 (취급유의)

THIS DRAWING IS PROPRIETARY TO HYUNDAI ELECTRIC. NO PART OF THIS DRAWING MAYBE REPRODUCED WITHOUT THE PERMISSION OF HYUNDAI ELECTRIC.

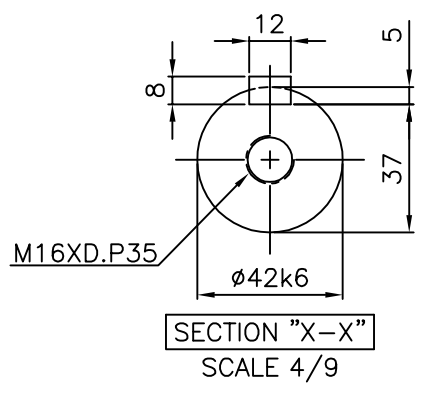
1		2		3		4			
▽	50S	REV	DATE	CONTENTS		REVD BY	CHKD BY	CHKD BY	APPD BY
▽▽	12.5S								
▽▽▽	3.2S								
▽▽▽▽	0.4S								



NOTE

1. TOLERANCE :

CENTER HEIGHT	160	$\begin{matrix} 0 \\ -0.5 \end{matrix}$
BASE HOLES	$\phi 15$	$\begin{matrix} +0.43 \\ 0 \end{matrix}$
SHAFT DIAMETER	$\phi 42$	$\begin{matrix} +0.018 \\ +0.002 \end{matrix}$
KEYWAY WIDTH	12	$\begin{matrix} 0 \\ -0.043 \end{matrix}$
KEYWAY DEPTH	5	$\begin{matrix} +0.2 \\ 0 \end{matrix}$
KEY WIDTH	12	$\begin{matrix} 0 \\ -0.043 \end{matrix}$
KEY HEIGHT	8	$\begin{matrix} 0 \\ -0.090 \end{matrix}$



APPD BY	S.K.HAN	UNIT	mm	SUBJECT	KS, IEC Fr.160L	DWG SIZE	A4 (1:9)
CHKD BY	S.Y.KIM	SCALE	1/9	TITLE	OUTLINE		
CHKD BY	I.K.KIM	PROJEC'N	3각법(3rd Angle)				
DSND BY	S.H.LEE	DATE	2019.06.17	REF. NO		Sheet No. of	
				DWG NO	LM-T1165B3PLV01	Revision No.	0