

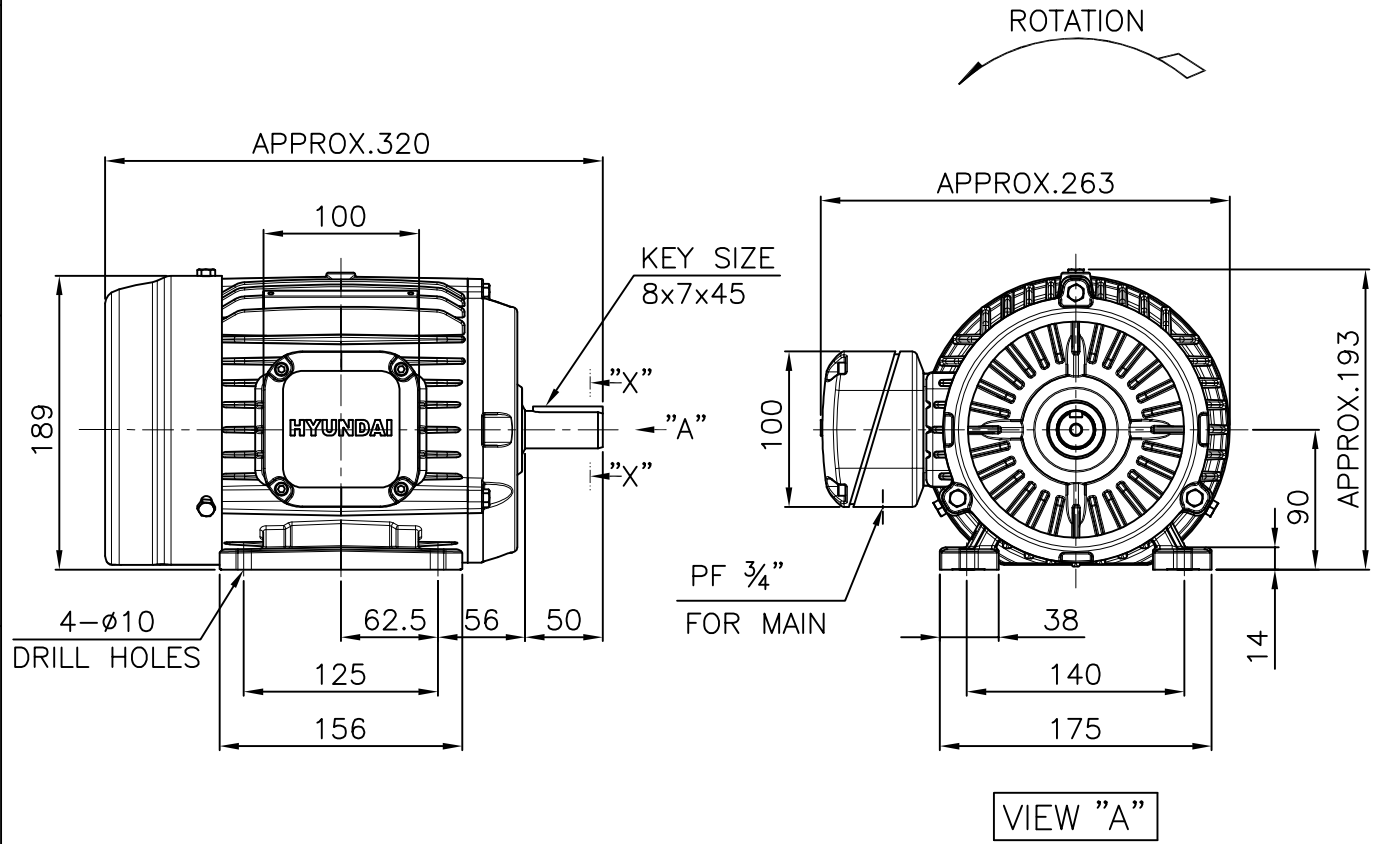


<p>Note: Others not mentioned in this data sheet shall be in accordance with maker standard.</p> <p>Above technical data are only design values and shall be guaranteed with tolerance of applicable standard.</p> <p>Inspection and performance test shall be maker standard, if not mentioned.</p> <p>* In case of Inverter-Fed Motor, performance data is based on sine wave tests.</p> <p>** The data are based on rated voltage &amp; frequency, and data are expressed as a percentage of full load value.</p>		Made in Vietnam
HEES W230-131-1 * In case of Inverter or V.V.V.F Motor:Performance data is based on sine wave tests.		A4(210mm X 297mm)

본 도면은 현대일렉트릭(주) 재산이므로  
허가없이 복사할 수 없음 (취급주의)

THIS DRAWING IS PROPRIETARY TO HYUNDAI ELECTRIC. NO PART OF THIS DRAWING  
MAYBE REPRODUCED WITHOUT THE PERMISSION OF HYUNDAI ELECTRIC.

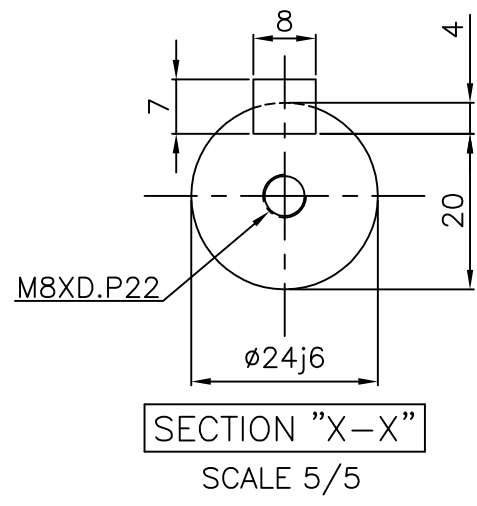
1			2		3		4		
▽	50S	REV	DATE	CONTENTS		REVD BY	CHKD BY	CHKD BY	APPD BY
▽▽	12.5S								
▽▽▽	3.2S								
▽▽▽▽	0.4S								



# NOTE

1.TOLERANCE :

CENTER HEIGHT	90	$\begin{smallmatrix} 0 \\ -0.5 \end{smallmatrix}$
BASE HOLES	ø10	$\begin{smallmatrix} +0.36 \\ 0 \end{smallmatrix}$
SHAFT DIAMETER	ø24	$\begin{smallmatrix} +0.009 \\ -0.004 \end{smallmatrix}$
KEYWAY WIDTH	8	$\begin{smallmatrix} 0 \\ -0.036 \end{smallmatrix}$
KEYWAY DEPTH	4	$\begin{smallmatrix} +0.2 \\ 0 \end{smallmatrix}$
KEY WIDTH	8	$\begin{smallmatrix} 0 \\ -0.036 \end{smallmatrix}$
KEY HEIGHT	7	$\begin{smallmatrix} 0 \\ -0.090 \end{smallmatrix}$



APPD BY	S.K.HAN	UNIT	mm	SUBJECT	KS, IEC Fr.90L	DWG SIZE
CHKD BY	S.Y.KIM	SCALE	1/6	TITLE		A4 ( 1/6 )
CHKD BY	I.K.KIM	PROJEC'N	3각법 (3rd Angle)			
DSND BY	S.H.LEE	DATE	2019.06.18			
				REF. NO	Sheet No. of	
				DWG NO	LM-T1095B3PLV01	Revision No. 0