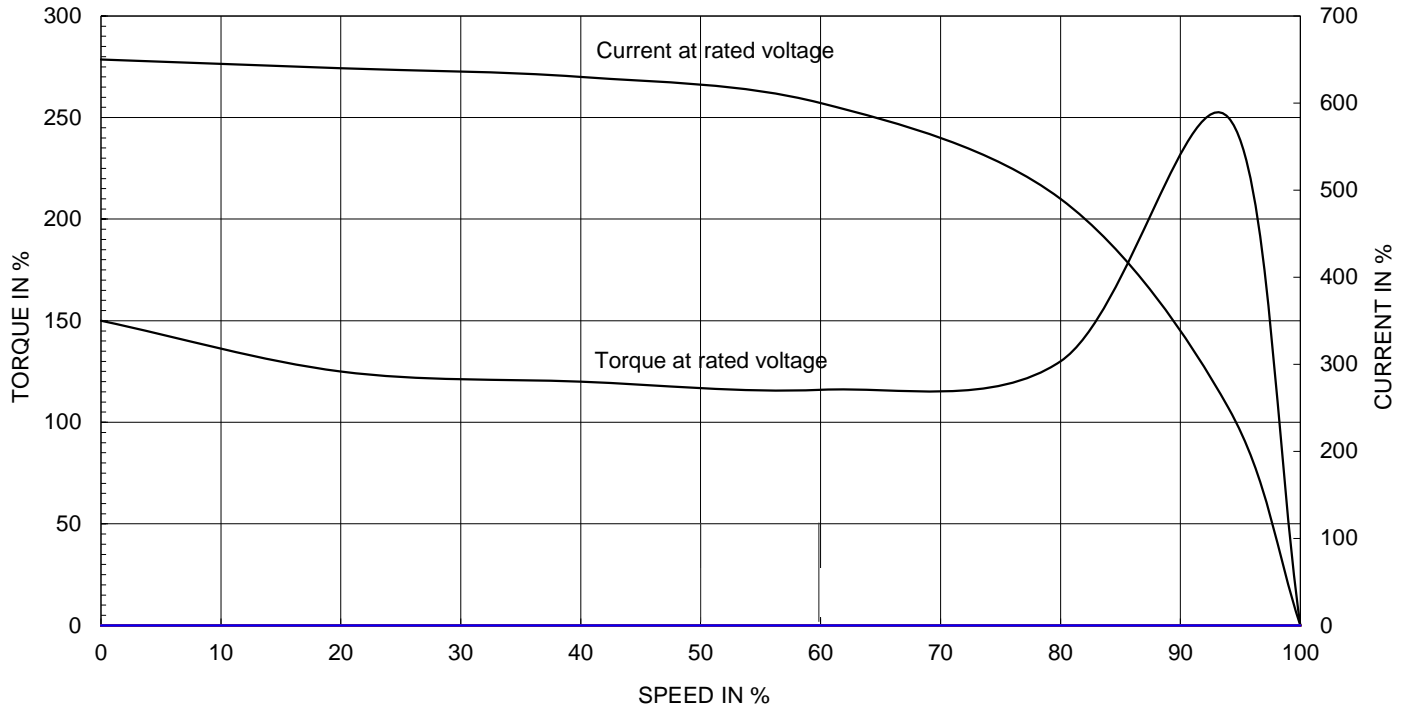
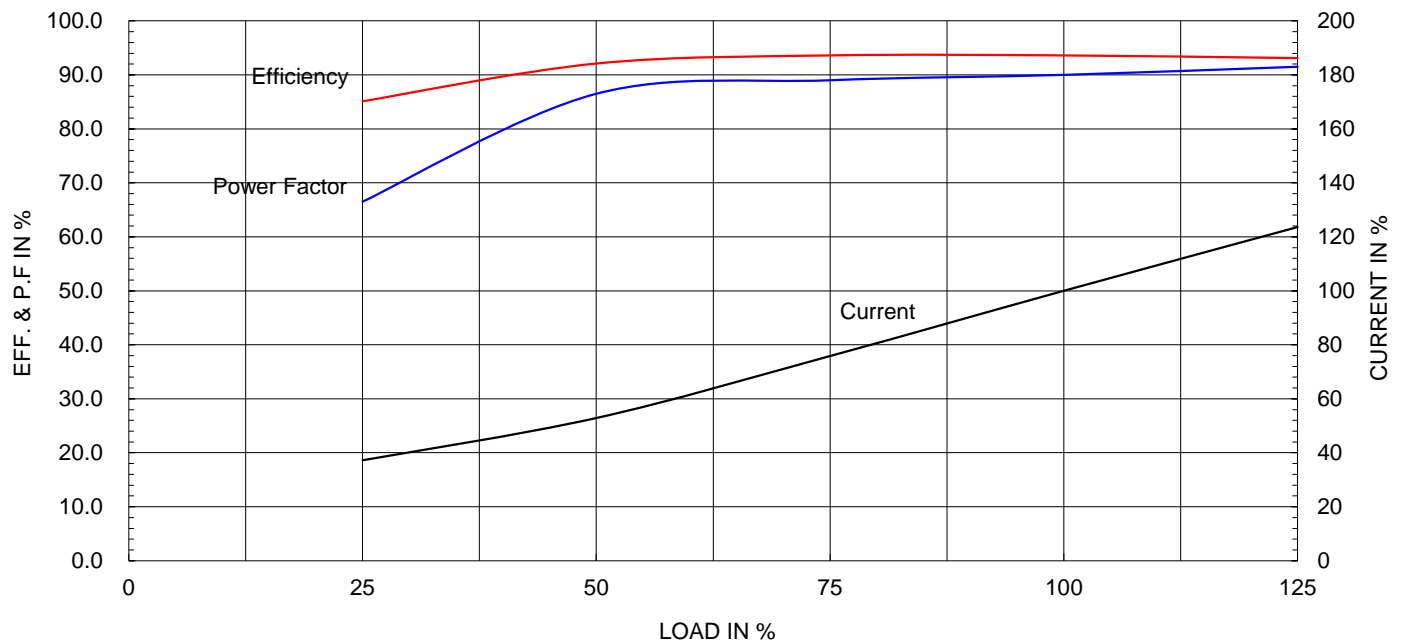


Model No.or RFQ No.		Item No.		Rev. No. [0]	
Project Name		Project No.		Quantity sets	
GENERAL SPECIFICATION			PERFORMANCE DATA		
Frame Size	200LL		Rated Output	45 kW 60 HP	
Type	HLP-45/2		Number of Poles	2	
Enclosure(Protection)	Totally Enclosed (IP55)		Rotor Type	Squirrel Cage	
Method of Cooling	IC411(FC)		Starting Method*	<input checked="" type="checkbox"/> D.O.L <input type="checkbox"/> Y- Δ	
Rated Frequency	60 Hz		Rated Voltage	440 V	380 V 220 V
Number of Phases	3		Current	Full Load	70.1 A 81.2 A 140.2 A
Insulation Class	<input checked="" type="checkbox"/> F <input type="checkbox"/> B <input type="checkbox"/> H		Locked-rotor**	800 %	800 % 800 %
Temp. Rise at full load (by resistance method)			Efficiency		
at 1.0 S.F 80 deg. C			50% Load 92.1 %		
Motor Location <input checked="" type="checkbox"/> Indoor <input type="checkbox"/> Outdoor			75% Load 93.6 %		
Altitude Less than 1000 meter			100% Load 93.6 %		
Relative Humidity Less than 80 %			Power Factor(p.u)		
Ambient Temp. 40 deg. C (Max.)			50% Load 0.865		
Duty Type Continuous (S1)			75% Load 0.890		
Service Factor 1.15			100% Load 0.900		
Mounting <input type="checkbox"/> B3 <input checked="" type="checkbox"/> B5 <input type="checkbox"/> V1 <input type="checkbox"/> B3/B5			Speed at Full Load 3560 r.p.m		
Bearing	Type	Anti-Friction		Torque	
	DE/N-DE	6212ZC3 / 6211ZC3		Full Load 12.3 kg·m	
	Lubricant	Grease(Gadus S2 V 100 2)		Locked-rotor** 150 %	
External Thrust Not applicable			Breakdown** 200 %		
Coupling Method <input checked="" type="checkbox"/> Direct <input type="checkbox"/> V-Belt			Moment of Inertia (J)		
Shaft Extension <input checked="" type="checkbox"/> Single <input type="checkbox"/> Double			Load(Max.) 4.800 kg·m ²		
Terminal	Main	<input type="checkbox"/> Steel <input checked="" type="checkbox"/> Cast Iron		Motor 0.208 kg·m ²	
Box	Aux.	<input type="checkbox"/> Yes <input checked="" type="checkbox"/> No		Sound Pressure Level (No-load & mean value at 1m from motor)	
	Location	Refer to Outline Drawing		87 dB(A)	
Application			Vibration 2.2 mm/sec (r.m.s)		
Area classification Non-Hazardous			Permissible number of consecutive starts		
Type of Ex-Protection Not applicable			Cold 3 times		
Applicable Standard KS,IEC, NEMA MG1 Part30(Vpeak)			Hot 2 times		
			Paint	Munsell No.	4.4PB5.5/5.6(VL-451)
ACCESSORIES			SUBMITTAL DRAWING		
			Outline Dimension Drawing \ Motor Weight(Approx.)		
			B3	LM-T1207B3CL001	320 kg
			B5	LM-T1207B5CL001	330 kg
			V1	LM-T1207V1CL001	330 kg
			B3/B5	LM-T1207B4CL001	330 kg
			Main T-Box Ass'y 3M-145864		
SPARE PARTS			REMARK		
			Premium Efficiency		
			*. For use on PWM VFD 10:1VT, 3:1CT@1.0S.F&F Temp. rise		
			Date	DSND	CHKD
			2015-09-05	R.G. KIM	- O.J. KIM S.H. GO

Note: Others not mentioned in this data sheet shall be in accordance with maker standard.
 Above technical data are only design values and shall be guaranteed with tolerance of applicable standard.
 Inspection and performance test shall be maker standard, if not mentioned.
 * In case of Inverter-Fed Motor, performance data is based on sine wave tests.
 ** Data is based on when the motor is supplied at rated voltage & frequency, and the data is expressed as a percentage of full-load value.

Type :	HLP-45/2	
Full Load Torque :	12.3	kg.m
Motor moment of Inertia (J) :	0.208	kg.m ²
Load moment of Inertia (J) :	4.800	kg.m ²

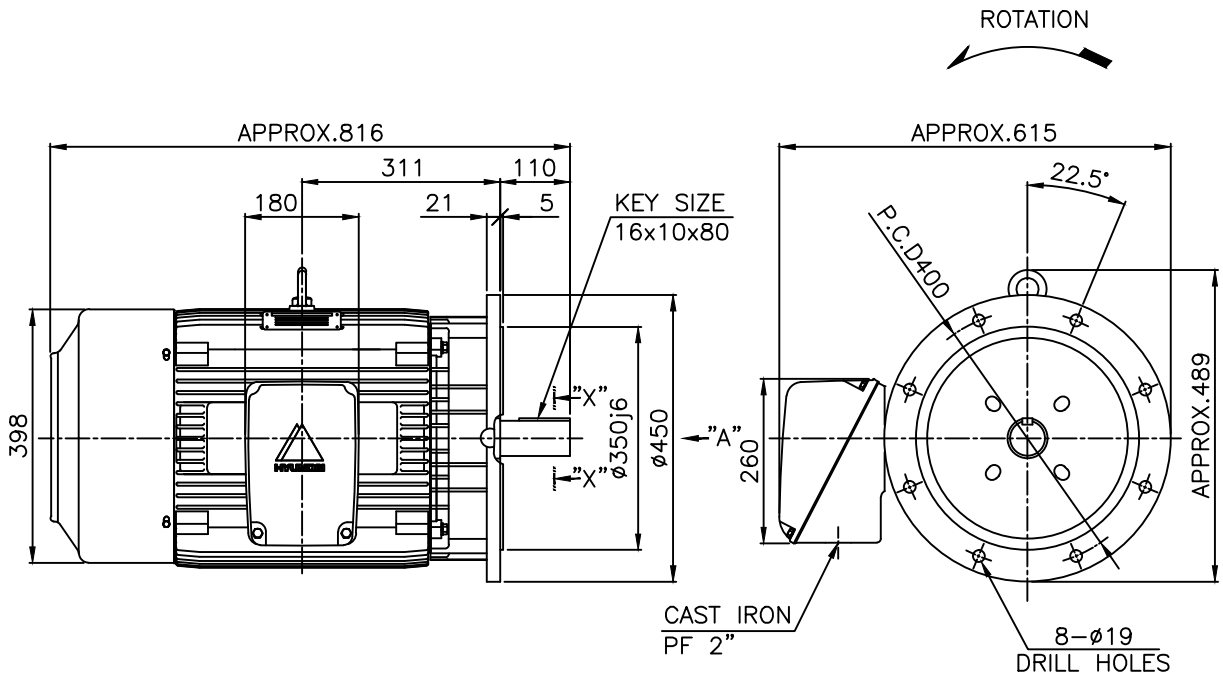
45 kW	2 P	60 Hz
Speed at Full Load :		3560 RPM
Rated Voltage	220V	
Full Load Current	140.2A	

SPEED VS TORQUE & CURRENT CURVE

OUTPUT VS EFF., P.F & CURRENT CURVE


본 도면은 현대일렉트릭(주) 재산이므로
허가없이 복사할 수 없음 (취급주의)

THIS DRAWING IS PROPRIETARY TO HYUNDAI ELECTRIC. NO PART OF THIS DRAWING
MAY BE REPRODUCED WITHOUT THE PERMISSION OF HYUNDAI ELECTRIC.

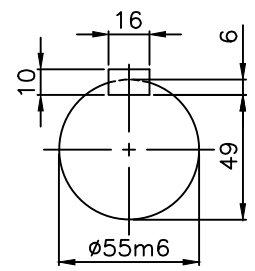
	1	2	3	4				
▽	50S	REV	DATE	CONTENTS	REVD BY	CHKD BY	CHKD BY	APPD BY
▽▽	12.5S							
▽▽▽	3.2S							
▽▽▽▽	0.4S							



NOTE

1.TOLERANCE :

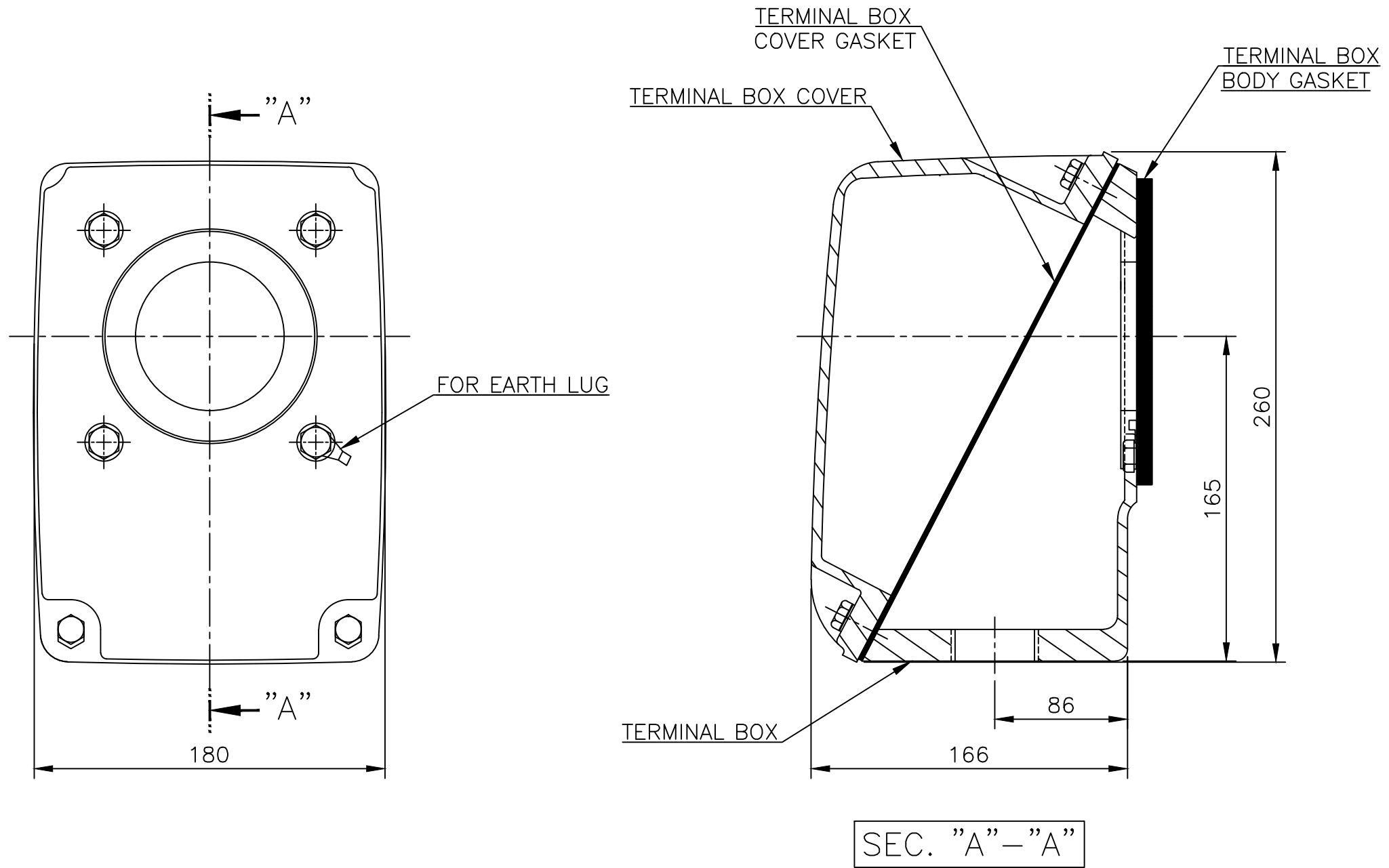
FLANGE HOLES	ø19	+0.52	0
RABBET DIAMETER	ø350	±0.018	
SHAFT DIAMETER	ø55	+0.030	+0.011
KEYWAY WIDTH	16	0	-0.043
KEYWAY DEPTH	6	+0.2	0
KEY WIDTH	16	0	-0.043
KEY HEIGHT	10	0	-0.090



SECTION "X-X"
SCALE 4/11

APPD BY	S.K.HAN	UNIT	mm	SUBJECT	KS, IEC Fr.200LL-2P	DWG SIZE	A4 (1:11)
CHKD BY	S.Y.KIM	SCALE	1/11			TITLE	OUTLINE
CHKD BY	R.G.KIM	PROJEC'N	3각법 (3rd Angle)	REF. NO		Sheet No.	of
DSND BY	S.H.YUN	DATE	2018-08-08	DWG NO	LM-T1207B5CL001	Revision No.	0





▽	50S
▽▽	12.5S
▽▽▽	3.2S
▽▽▽▽	0.4S

REV	DATE	CONTENTS	REVD BY	CHKD BY	CHKD BY	APPD BY

일반가공차		일반제관공차	
1-4	±0.1	6-30	±0.5
4-18	±0.2	30-120	±0.8
18-63	±0.3	120-315	±1.2
63-250	±0.5	315-1000	±2.0
250-	±0.8	1000-	±3.0

Q'TY	DESCRIPTION	MATERIAL	DIMENSION	WEIGHT	PART NO.	REMARK	NO.
APPD BY	S.K.HAN	UNIT	mm	SUBJECT	FR.200 (CAST IRON)	DWG SIZE	A3 (1:2)
CHKD BY	S.Y.KIM	SCALE	1/2	TITLE Main Terminal Box Assembly			
CHKD BY	R.G.KIM	PROJEC'N	3각법(3rd Angle)				
DSND BY	H.K.LEE	DATE	2011-08-30	REF. NO	227B8003CB5	Sheet No.	of
				DWG NO	3M-145864	Revision No.	2