

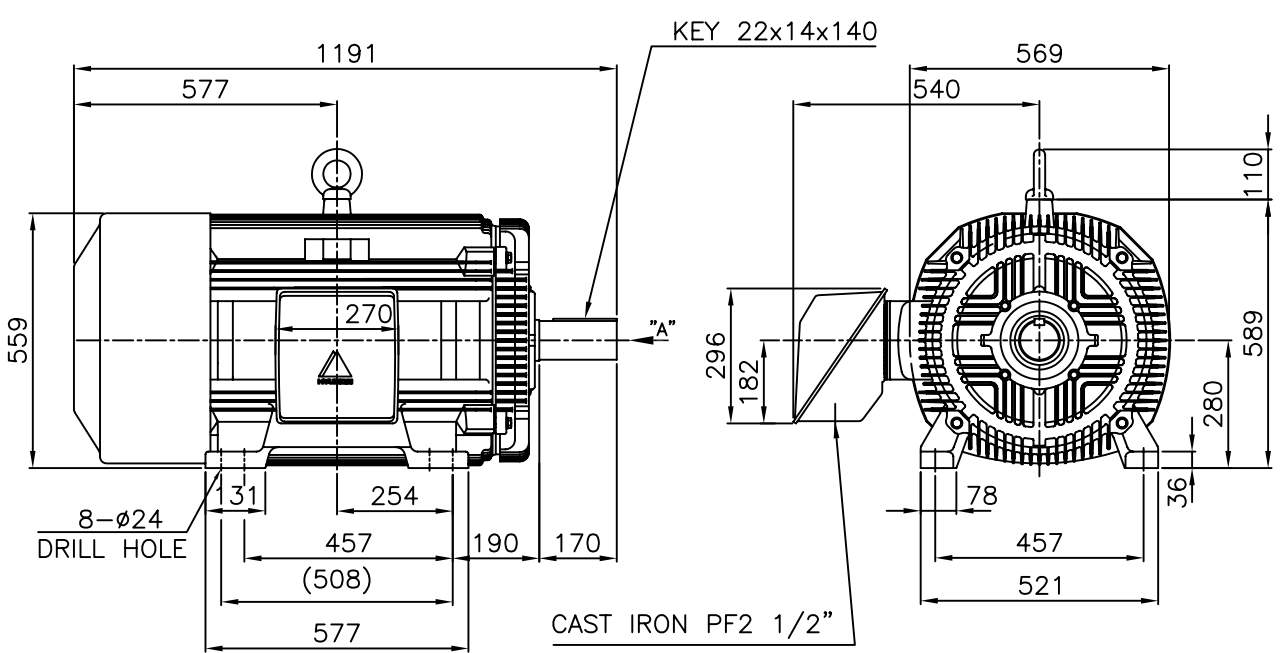


DATA SHEET of AC INDUCTION MOTOR

**120 HP - 8 P
TE**

DESIGN NO : **KS C4202-1996**

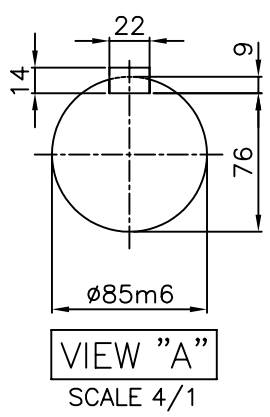
		<h1>TEFC</h1>		TYPE (1) TNB , TDB CAST IRON FRAME
		THREE PHASE INDUCTION MOTOR		



NOTE

1.TOLERANCE :

CENTER HEIGHT	280	$\begin{matrix} 0 \\ -1.0 \end{matrix}$
BASE HOLE	$\phi 24$	$\begin{matrix} +0.43 \\ 0 \end{matrix}$
SHAFT DIAMETER	$\phi 85$	$\begin{matrix} +0.035 \\ +0.013 \end{matrix}$
KEYWAY WIDTH	22	$\begin{matrix} -0.022 \\ -0.074 \end{matrix}$
KEYWAY DEPTH	9	$\begin{matrix} +0.2 \\ 0 \end{matrix}$
KEY WIDTH	22	$\begin{matrix} 0 \\ -0.052 \end{matrix}$
KEY HEIGHT	14	$\begin{matrix} 0 \\ -0.110 \end{matrix}$



2.The type (1)-"TNB , TDB" is for HHI's standard products and it can be changed for customer's requirements or detail designing.

				TEFC STANDARD		
APPD BY	KANG K.J.	UNIT	MM	SUBJECT	KS Fr.280L TEFC	CAD PROJ \ FILE
CHKD BY	KIM O.J.	SCALE	1/17			MMSTDMTR/TJ8LAP51
CHKD BY	LEE N.D.	PROJEC'N	3rd Angle	OUTLINE THREE-PHASE INDUCTION MOTOR		
DSND BY	KIM RYANG GYU	DATE	2007.03.23			
				REF. NO	L2-Series	Sheet No. of
				DWG NO	TJ8LAP51	Revision No. 0



HYUNDAI

HEAVY INDUSTRIES CO., LTD

PERFORMANCE CURVE

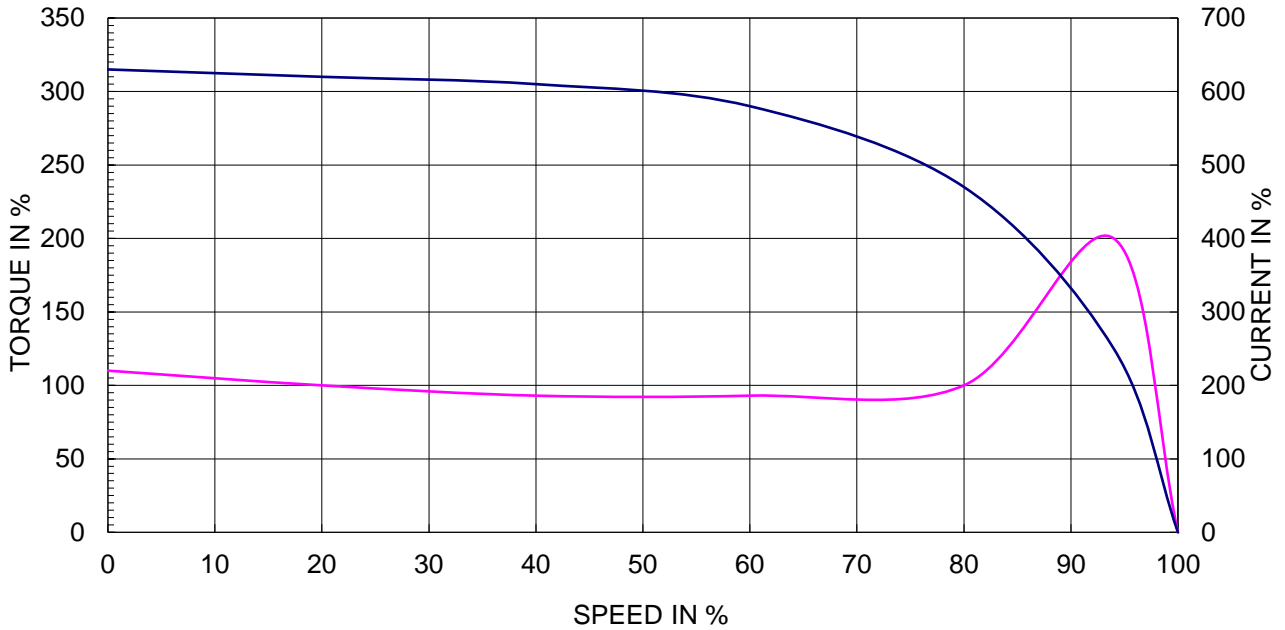
CURVE NO.

P-TNBJ8L08090

TYPE :		
RATED TORQUE :	99.6	Kg.m
GD2 OF MOTOR :	17.7	Kg.m ²
(ALLOWABLE) GD2 OF LOA	819.9	Kg.m ²

90 kW	8 P	60 Hz
RATED SPEED :		880 RPM
VOLTAGE	440V	380 V
RATED CURRENT	151.2A	175.0 A
		302.3A

SPEED VS TORQUE & CURRENT CURVE



OUTPUT VS EFF., P.F & CURRENT CURVE

