

AC INDUCTION MOTOR DATA SHEET

Model No.or RFQ No.		Item No.		Rev. No. [0]	
Project Name		Project No.		Quantity sets	
GENERAL SPECIFICATION			PERFORMANCE DATA		
Frame Size	250M		Rated Output	75 kW 100 HP	
Type	HLP-75/6		Number of Poles	6	
Enclosure(Protection)	Totally Enclosed (IP55)		Rotor Type	Squirrel Cage	
Method of Cooling	IC411(FC)		Starting Method*	<input checked="" type="checkbox"/> D.O.L <input type="checkbox"/> Y- Δ	
Rated Frequency	60 Hz		Rated Voltage	440 V 380 V 220 V	
Number of Phases	3		Current	Full Load 123.3 A 142.8 A 246.6 A	
Insulation Class	<input checked="" type="checkbox"/> F <input type="checkbox"/> B <input type="checkbox"/> H		Locked-rotor**	740 % 740 % 740 %	
Temp. Rise at full load (by resistance method)			Efficiency		
at 1.0 S.F 80 deg. C			50% Load 94.9 %		
Motor Location	<input checked="" type="checkbox"/> Indoor <input type="checkbox"/> Outdoor		75% Load 95.2 %		
Altitude	Less than 1000 meter		100% Load 95.0 %		
Relative Humidity	Less than 80 %		Power Factor(p.u)		
Ambient Temp.	40 deg. C (Max.)		50% Load 0.732		
Duty Type	Continuous (S1)		75% Load 0.811		
Service Factor	1.15		100% Load 0.840		
Mounting	<input type="checkbox"/> B3 <input type="checkbox"/> B5 <input type="checkbox"/> V1 <input checked="" type="checkbox"/> B3/B5		Speed at Full Load 1185 r.p.m		
Bearing	Type	Anti-Friction	Torque		
	DE/N-DE	6316C3 / 6313C3	Full Load 61.6 kg·m		
	Lubricant	Grease(Gadus S2 V 100 2)	Locked-rotor** 150 %		
External Thrust	Not applicable		Breakdown** 230 %		
Coupling Method	<input checked="" type="checkbox"/> Direct <input type="checkbox"/> V-Belt		Moment of Inertia (J)		
Shaft Extension	<input checked="" type="checkbox"/> Single <input type="checkbox"/> Double		Load(Max.) 126.780 kg·m²		
Terminal Box	Main	<input type="checkbox"/> Steel <input checked="" type="checkbox"/> Cast Iron	Motor 2.758 kg·m²		
	Aux.	<input type="checkbox"/> Yes <input checked="" type="checkbox"/> No	Sound Pressure Level (No-load & mean value at 1m from motor)		
	Location	Refer to Outline Drawing	75 dB(A)		
Application			Vibration 2.2 mm/sec (r.m.s)		
Area classification	Non-Hazardous		Permissible number of		
Type of Ex-Protection	Not applicable		Cold 3 times		
Applicable Standard	KS,IEC, NEMA MG1 Part30(Vpeak)		Hot 2 times		
ACCESSORIES			Paint	Munsell No. 4.4PB5.5/5.6(VL-451)	
	SUBMITTAL DRAWING				
	Outline Dimension Drawing \ Motor Weight(Approx.)				
	B3	LM-T1253B3PL001	550	kg	
	B5	LM-T1250B5PL001	590	kg	
	V1	LM-T1250V1PL001	590	kg	
	B3/B5	LM-T1253B4PL001	570	kg	
	Main T-Box Ass'y 3M-016882				
SPARE PARTS		REMARK			
		Premium Efficiency			
		*. For use on PWM VFD 10:1VT, 3:1CT@1.0S.F&F Temp. rise			
		Date	DSND	CHKD	CHKD
		2015-09-05	R.G. KIM	-	O.J. KIM
					APPD
					S.H. GO

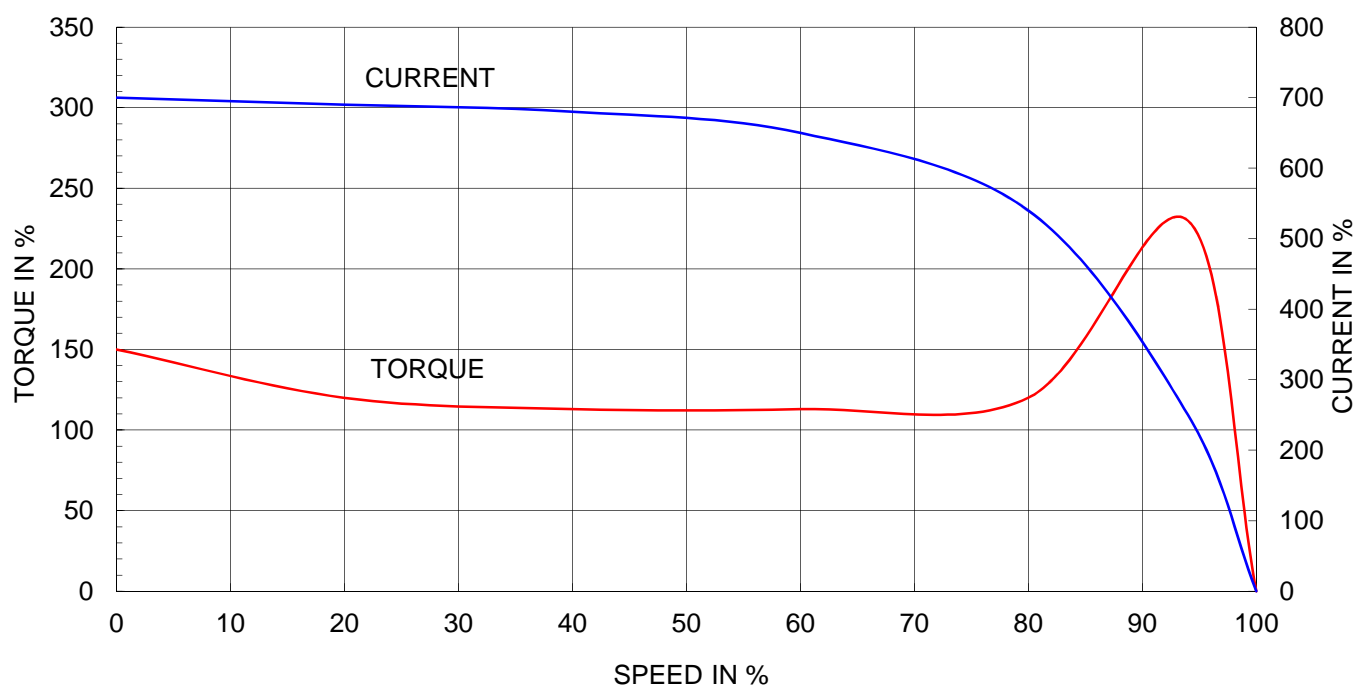
Note: Others not mentioned in this data sheet shall be in accordance with maker standard.
 Above technical data are only design values and shall be guaranteed with tolerance of applicable standard.
 Inspection and performance test shall be maker standard, if not mentioned.
 * In case of Inverter-Fed Motor, performance data is based on sine wave tests.
 ** Data is based on when the motor is supplied at rated voltage & frequency, and the data is expressed as a percentage of full-load value.

HHI W230-131-1 * In case of Inverter or V.V.V.F Motor:Performance data is based on sine wave tests. A4(210mm X 297mm)

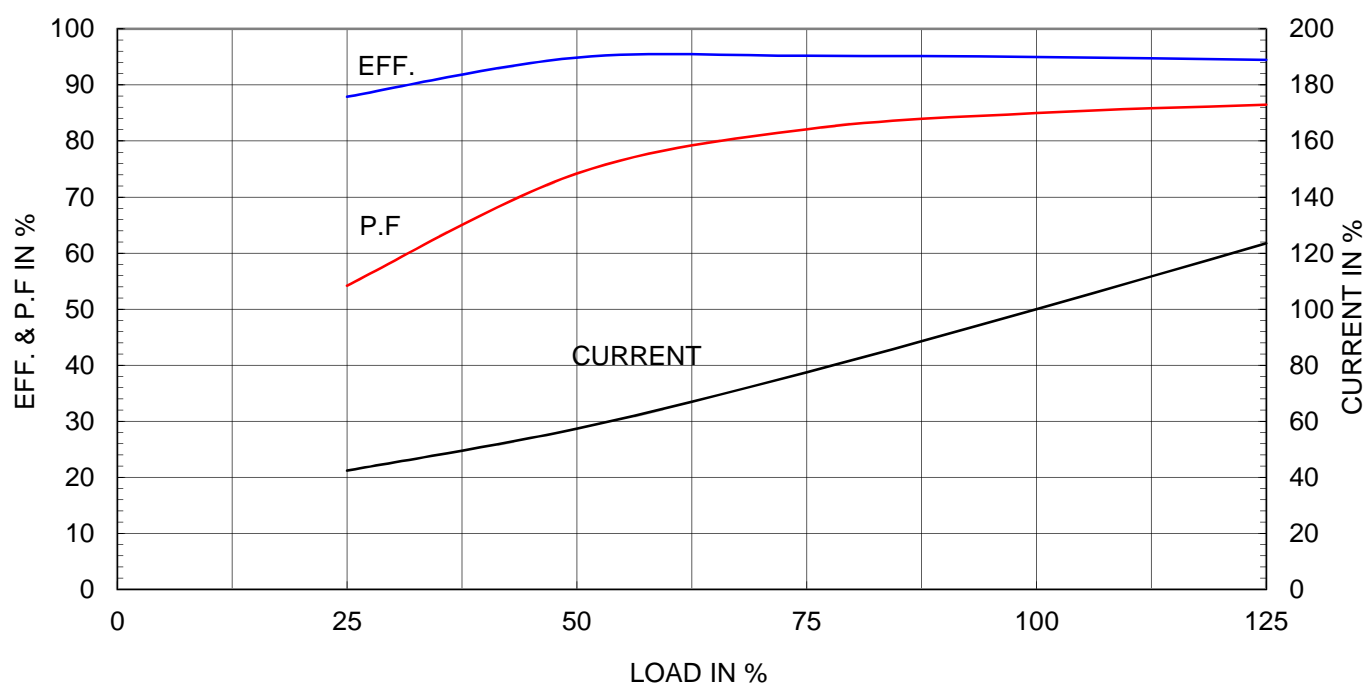
Type	:	HLP-75/6
Full Load Torque	:	61.6 Kg.m
Motor moment of Inertia (J)	:	2.758 Kg.m ²
Load moment of Inertia (J)	:	126.780 Kg.m ²

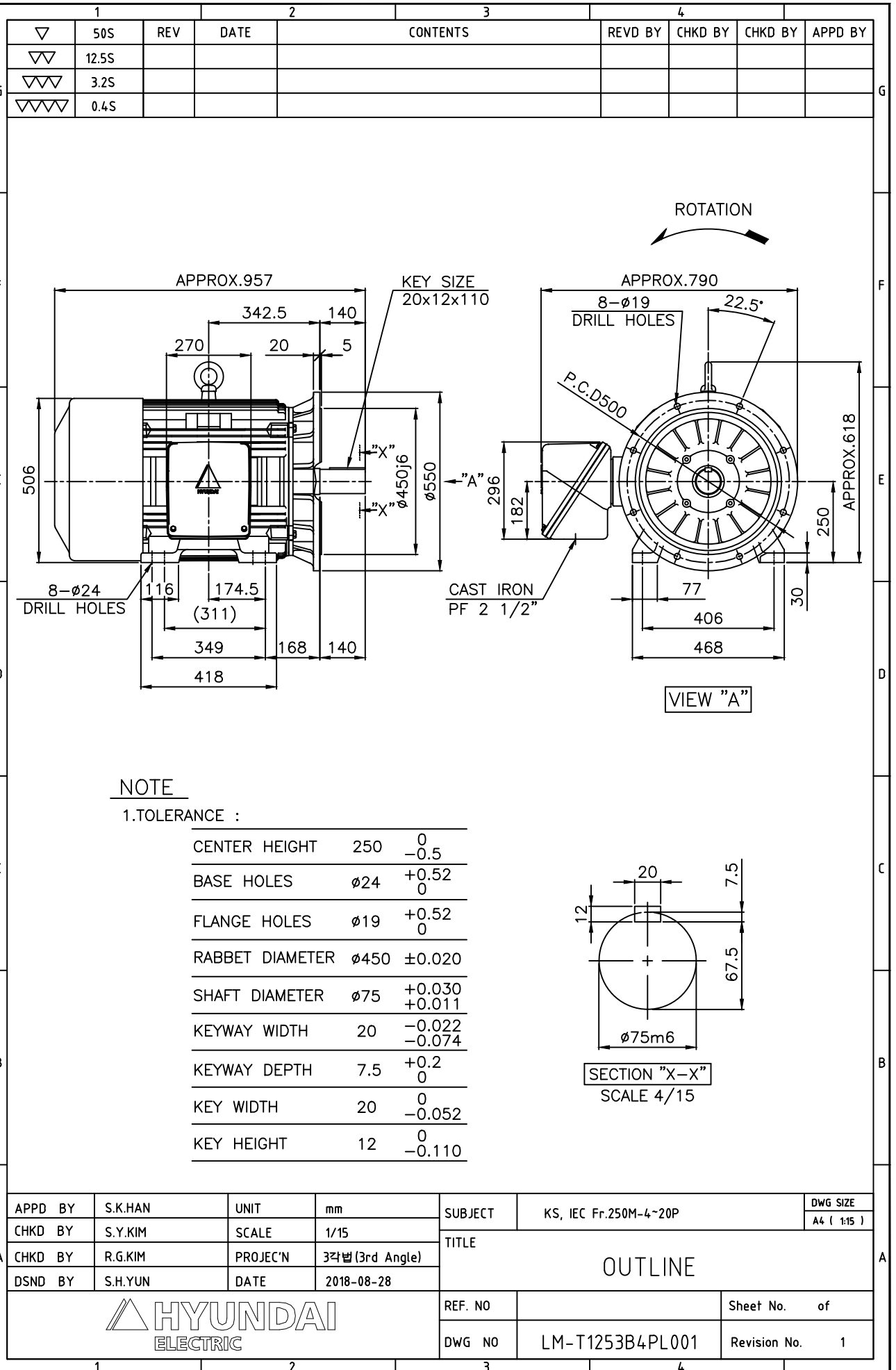
75 kW		6 P		60 Hz	
Speed at Full Load :				1185 RPM	
Rated Voltage	440V	380V	220V		
Full Load Current	121.9A	141.1A	243.7A		

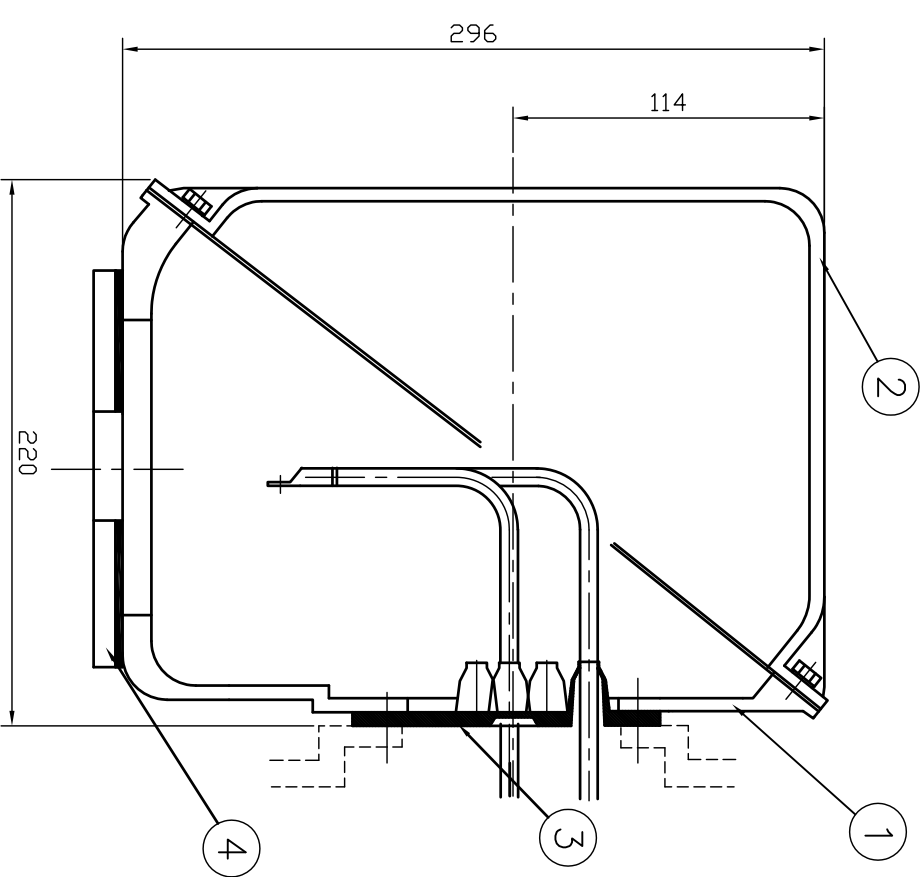
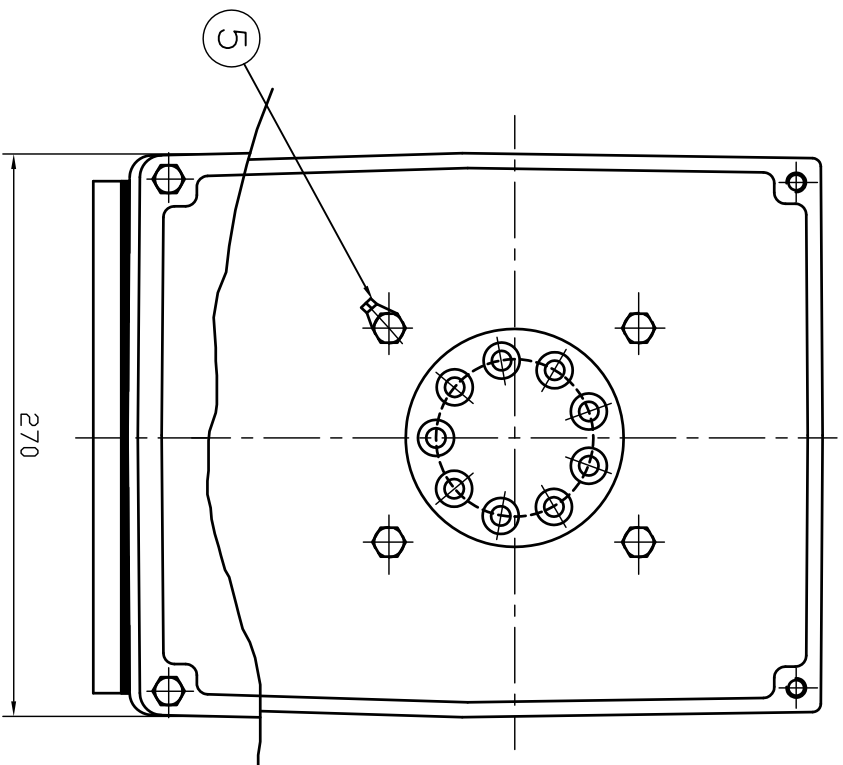
SPEED VS TORQUE & CURRENT CURVE



OUTPUT VS EFF., P.F & CURRENT CURVE







REV	DATE	CONTENTS	REV'D BY	CHK'D BY	Q.P. CHK	APP'D BY
1						

1	EARTH TERMINAL LUG					5
1	CABLE ENTRY PLATE					4
1	GASKET	NBR				3
1	TERMINAL BOX COVER	CAST IRON				2
1	TERMINAL BOX BODY	CAST IRON				1
Q'TY	DESCRIPTION	MATERIAL	DIMENSION	WEIGHT	PART NO.	REMARK
APP'D BY	김진오	UNIT	MM			CAD PROJ. & FILE
Q.P. CHK	주영걸	SCALE	NONE			T-BOX-M \ 38016882
CHK'D BY	권오철	PROJEC'T	3 권(3rd Angle)			
DSND BY	김헌태	DATE	92.06.05			
				SUBJECT	HLA6 - 250,280Fr.	
				TITLE	(CAST IRON)	
				TERMINAL BOX ASS'Y		
				REF. NO		Sheet No. of
				DWG NO	3M-016882	Revision No.

