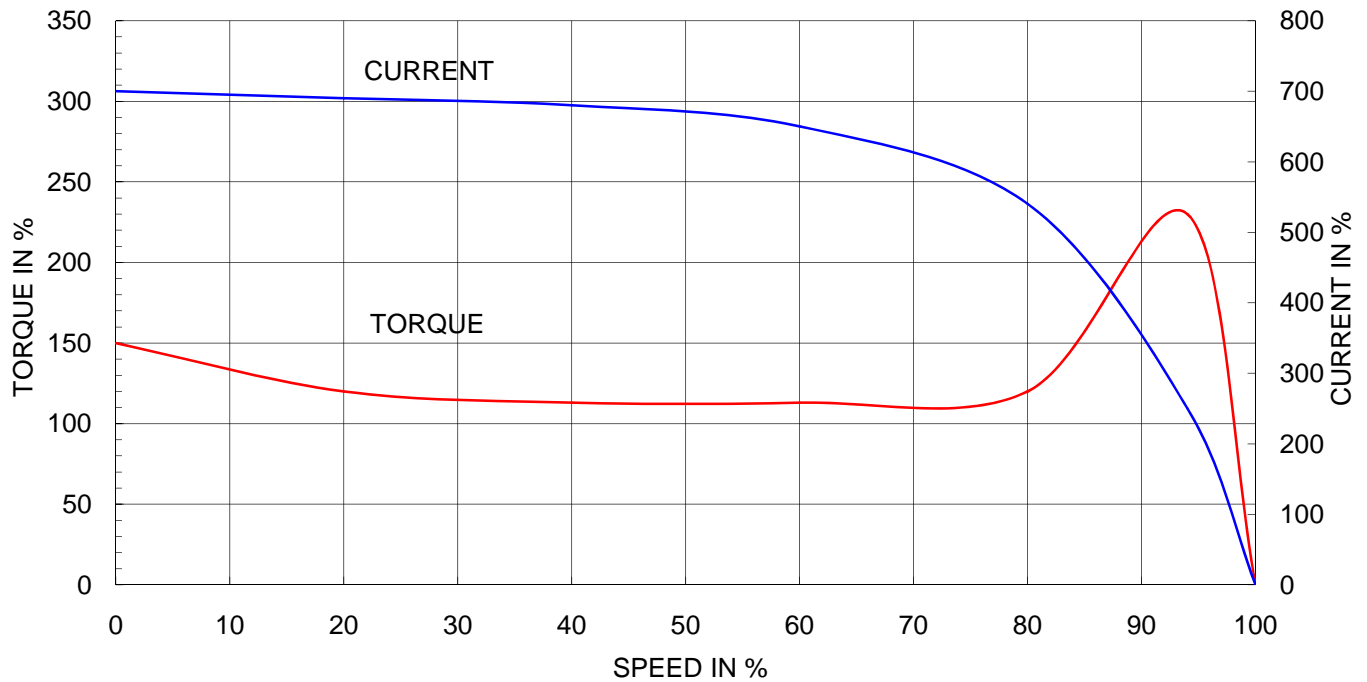


Type	:	HLP-55/4
Full Load Torque	:	30.1 Kg.m
Motor moment of Inertia (J)	:	0.950 Kg.m ²
Load moment of Inertia (J)	:	27.600 Kg.m ²

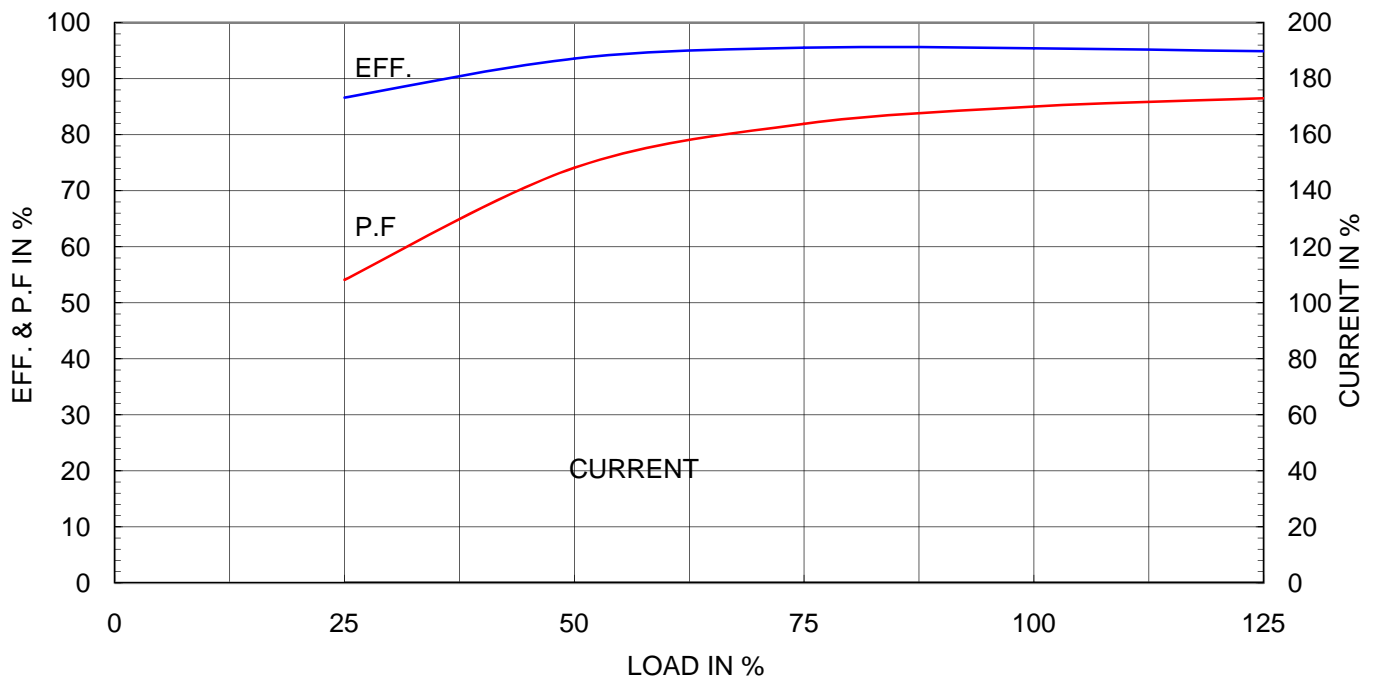
55 kW	4 P	60 Hz	
Speed at Full Load :		1780 RPM	
Rated Voltage	440V	380V	220V
Full Load Current	89.0A	103.1A	178.0A

SPEED VS TORQUE & CURRENT CURVE

103.1A



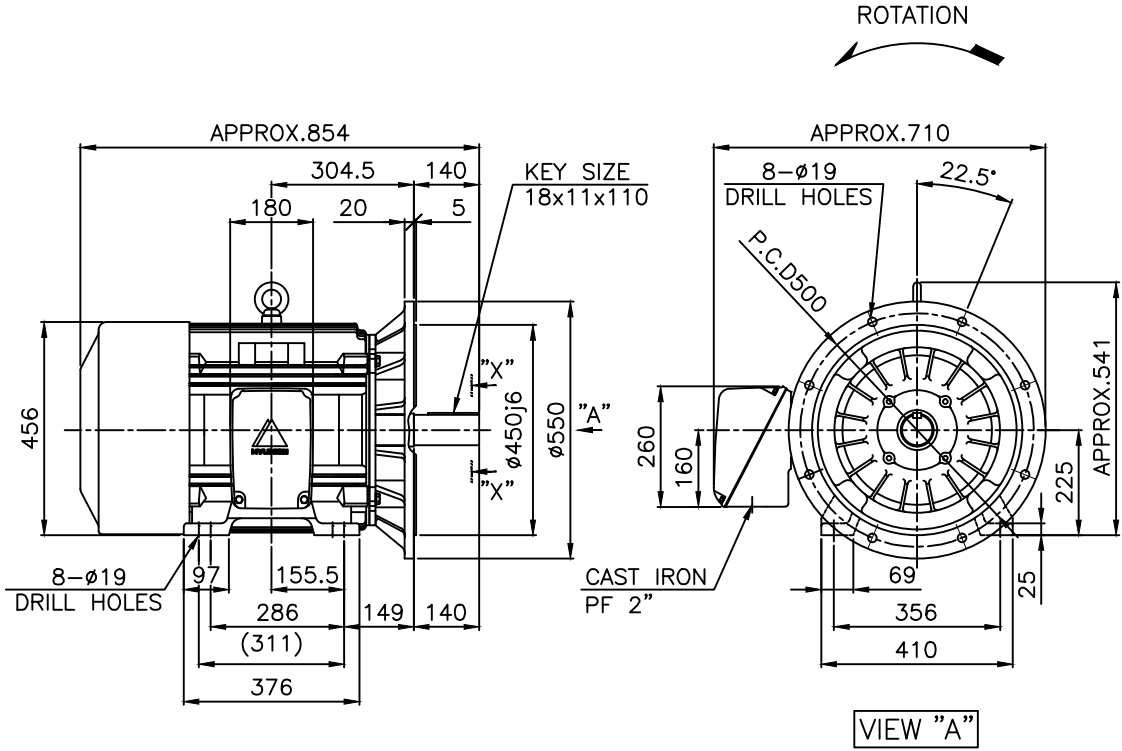
OUTPUT VS EFF., P.F & CURRENT CURVE



본 도면은 현대일렉트릭(주) 재산이므로
허가없이 복사할 수 없음 (취급주의)

THIS DRAWING IS PROPRIETARY TO HYUNDAI ELECTRIC. NO PART OF THIS DRAWING
MAY BE REPRODUCED WITHOUT THE PERMISSION OF HYUNDAI ELECTRIC.

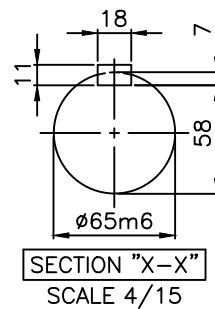
	1	2	3	4				
▽	50S	REV	DATE	CONTENTS	REVD BY	CHKD BY	CHKD BY	APPD BY
▽▽	12.5S							
▽▽▽	3.2S							
▽▽▽▽	0.4S							



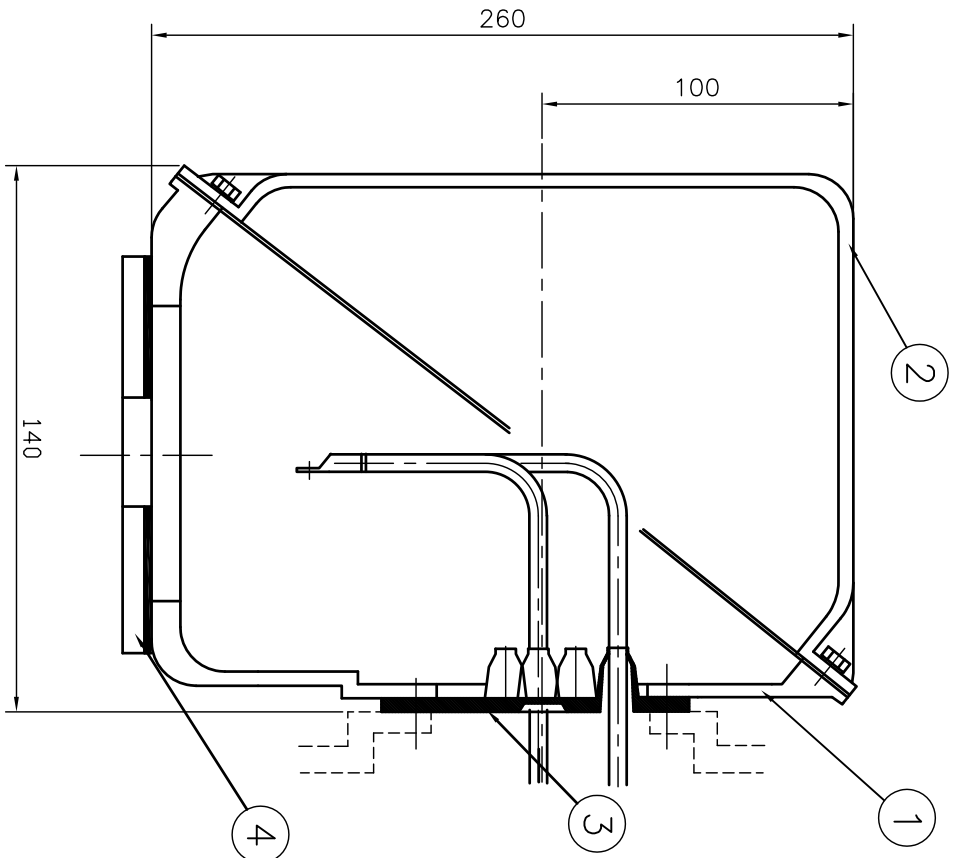
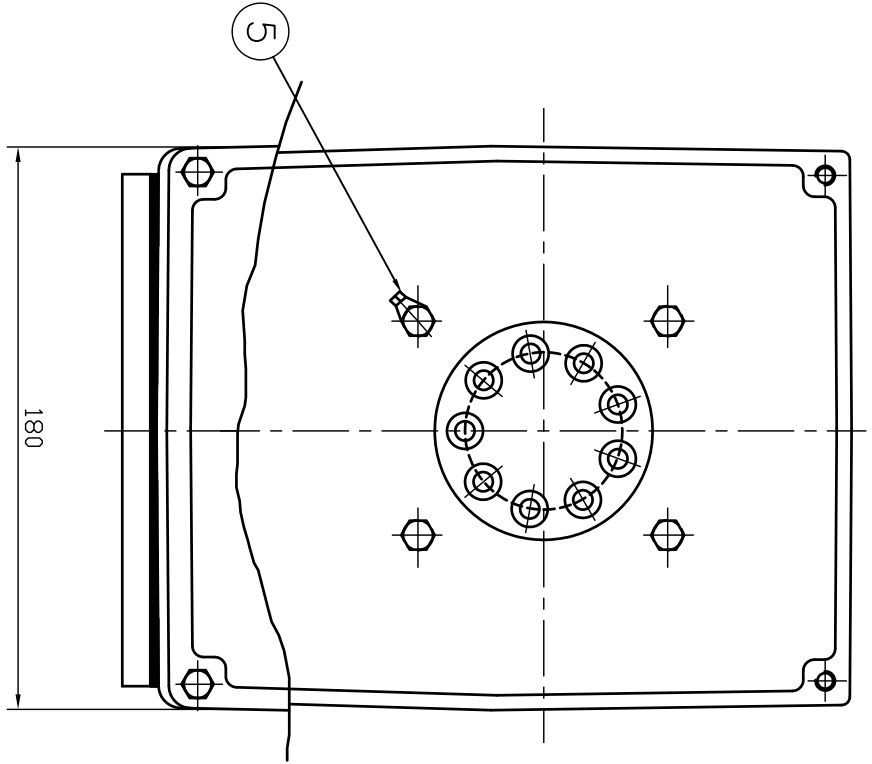
NOTE

1.TOLERANCE :

CENTER HEIGHT	225	$\begin{matrix} 0 \\ -0.5 \end{matrix}$
BASE HOLES	$\phi 19$	$\begin{matrix} +0.52 \\ 0 \end{matrix}$
FLANGE HOLES	$\phi 19$	$\begin{matrix} +0.52 \\ 0 \end{matrix}$
RABBET DIAMETER	$\phi 450$	± 0.020
SHAFT DIAMETER	$\phi 65$	$\begin{matrix} +0.030 \\ +0.011 \end{matrix}$
KEYWAY WIDTH	18	$\begin{matrix} -0.018 \\ -0.061 \end{matrix}$
KEYWAY DEPTH	7	$\begin{matrix} +0.2 \\ 0 \end{matrix}$
KEY WIDTH	18	$\begin{matrix} 0 \\ -0.043 \end{matrix}$
KEY HEIGHT	11	$\begin{matrix} 0 \\ -0.110 \end{matrix}$



APPD BY	S.K.HAN	UNIT	mm	SUBJECT	KS, IEC Fr.225S-4-20P	DWG SIZE	A4 (1:15)
CHKD BY	S.Y.KIM	SCALE	1/15	TITLE	OUTLINE		
CHKD BY	R.G.KIM	PROJEC'N	3각법(3rd Angle)	REF. NO		Sheet No.	of
DSND BY	S.H.YUN	DATE	2018-08-16	DWG NO	LM-T1221B4PL001	Revision No.	1



REV	DATE	CONTENTS	REV'D BY	CHK'D BY	Q.P. CHK	APP'D BY
1						

QTY	DESCRIPTION	MATERIAL	DIMENSION	WEIGHT	PART NO.	REMARK	NO.
1	EARTH TERMINAL LUG						5
1	CABLE ENTRY PLATE						4
1	GASKET	NBR					3
1	TERMINAL BOX COVER	CAST IRON					2
1	TERMINAL BOX BODY	CAST IRON					1

APP'D BY	권진오	UNIT	MM
Q.P. CHK	주영철	SCALE	NONE
CHK'D BY	권오철	PROJEC'N	3 권(3rd Angle)
DSND BY	김헌태	DATE	92.06.05

REF. NO	DWG NO	REV. NO
	3M-016881	0

TITLE	SUBJECT	REMARK
TERMINAL BOX ASS'Y	HLA6 - 200, 225Fr.	CAD PROJ. \FILE \T-BOX-M\3M016881

