

AC INDUCTION MOTOR DATA SHEET

Model No.or RFQ No.		Item No.	Rev. No. [0]	
Project Name		Project No.	Quantity sets	
GENERAL SPECIFICATION			PERFORMANCE DATA	
Frame Size	225S		Rated Output 45 kW 60 HP	
Type	HLP-45/6		Number of Poles 6	
Enclosure(Protection)	Totally Enclosed (IP55)		Rotor Type Squirrel Cage	
Method of Cooling	IC411(FC)		Starting Method* <input checked="" type="checkbox"/> D.O.L <input type="checkbox"/> Y- Δ	
Rated Frequency	60 Hz		Rated Voltage 440 V 380 V 220 V	
Number of Phases	3		Current Full Load 76.2 A 88.2 A 152.4 A	
Insulation Class	<input checked="" type="checkbox"/> F <input type="checkbox"/> B <input type="checkbox"/> H		Locked-rotor** 750 % 750 % 750 %	
Temp. Rise at full load (by resistance method)			Efficiency	
at 1.0 S.F 80 deg. C			50% Load 94.2 %	
Motor Location	<input checked="" type="checkbox"/> Indoor <input type="checkbox"/> Outdoor		75% Load 94.7 %	
Altitude	Less than 1000 meter		100% Load 94.5 %	
Relative Humidity	Less than 80 %		Power Factor(p.u)	
Ambient Temp.	40 deg. C (Max.)		50% Load 0.735	
Duty Type	Continuous (S1)		75% Load 0.800	
Service Factor	1.15		100% Load 0.820	
Mounting	<input type="checkbox"/> B3 <input type="checkbox"/> B5 <input type="checkbox"/> V1 <input checked="" type="checkbox"/> B3/B5		Speed at Full Load 1185 r.p.m	
Bearing	Type	Anti-Friction		
	DE/N-DE	6314C3 / 6213C3		
	Lubricant	Grease(Gadus S2 V 100 2)		
External Thrust	Not applicable			
Coupling Method	<input checked="" type="checkbox"/> Direct <input type="checkbox"/> V-Belt		Torque	
Shaft Extension	<input checked="" type="checkbox"/> Single <input type="checkbox"/> Double		Full Load 37.0 kg·m	
Terminal Box	Main	<input type="checkbox"/> Steel <input checked="" type="checkbox"/> Cast Iron		
	Aux.	<input type="checkbox"/> Yes <input checked="" type="checkbox"/> No		
Location Refer to Outline Drawing			Locked-rotor** 150 %	
Application			Breakdown** 230 %	
Area classification Non-Hazardous			Moment of Inertia (J)	
Type of Ex-Protection Not applicable			Load(Max.) 101.050 kg·m ²	
Applicable Standard KS,IEC, NEMA MG1 Part30(Vpeak)			Motor 1.555 kg·m ²	
ACCESSORIES			Sound Pressure Level (No-load & mean value at 1m from motor)	
			73 dB(A)	
			Vibration 2.2 mm/sec (r.m.s)	
			Permissible number of consecutive starts Cold 3 times	
			Hot 2 times	
			Paint Munsell No. 4.4PB5.5/5.6(VL-451)	
			SUBMITTAL DRAWING	
			Outline Dimension Drawing \ Motor Weight(Approx.)	
			B3	LM-T1221B3PL001 380 kg
			B5	LM-T1225B5PL001 420 kg
			V1	LM-T1225V1PL001 420 kg
			B3/B5	LM-T1221B4PL001 400 kg
			Main T-Box Ass'y 3M-016881	
SPARE PARTS			REMARK Premium Efficiency	
			*. For use on PWM VFD 10:1VT, 3:1CT@1.0S.F&F Temp. rise	
			Date	DSND
			2015-09-05	R.G. KIM
			CHKD	CHKD
			-	O.J. KIM
			APPD	S.H. GO

Note: Others not mentioned in this data sheet shall be in accordance with maker standard.

Above technical data are only design values and shall be guaranteed with tolerance of applicable standard.

Inspection and performance test shall be maker standard, if not mentioned.

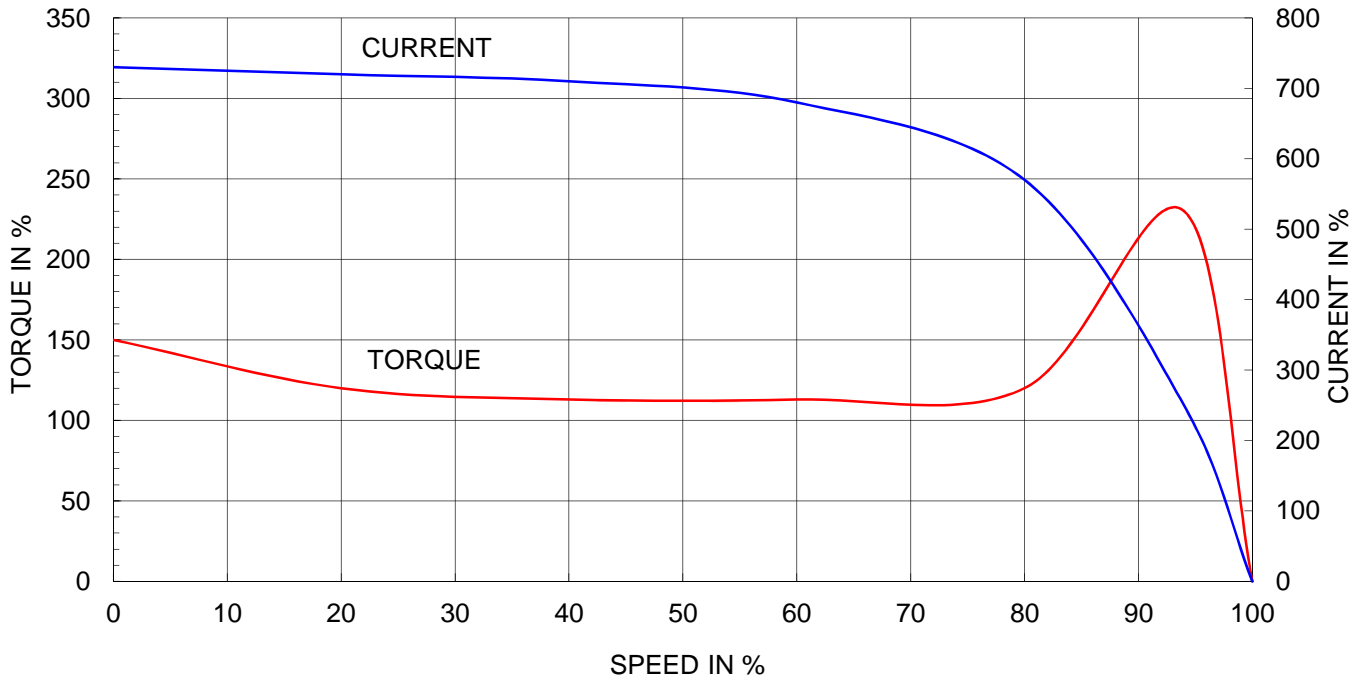
* In case of Inverter-Fed Motor, performance data is based on sine wave tests.

** Data is based on when the motor is supplied at rated voltage & frequency, and the data is expressed as a percentage of full-load value.

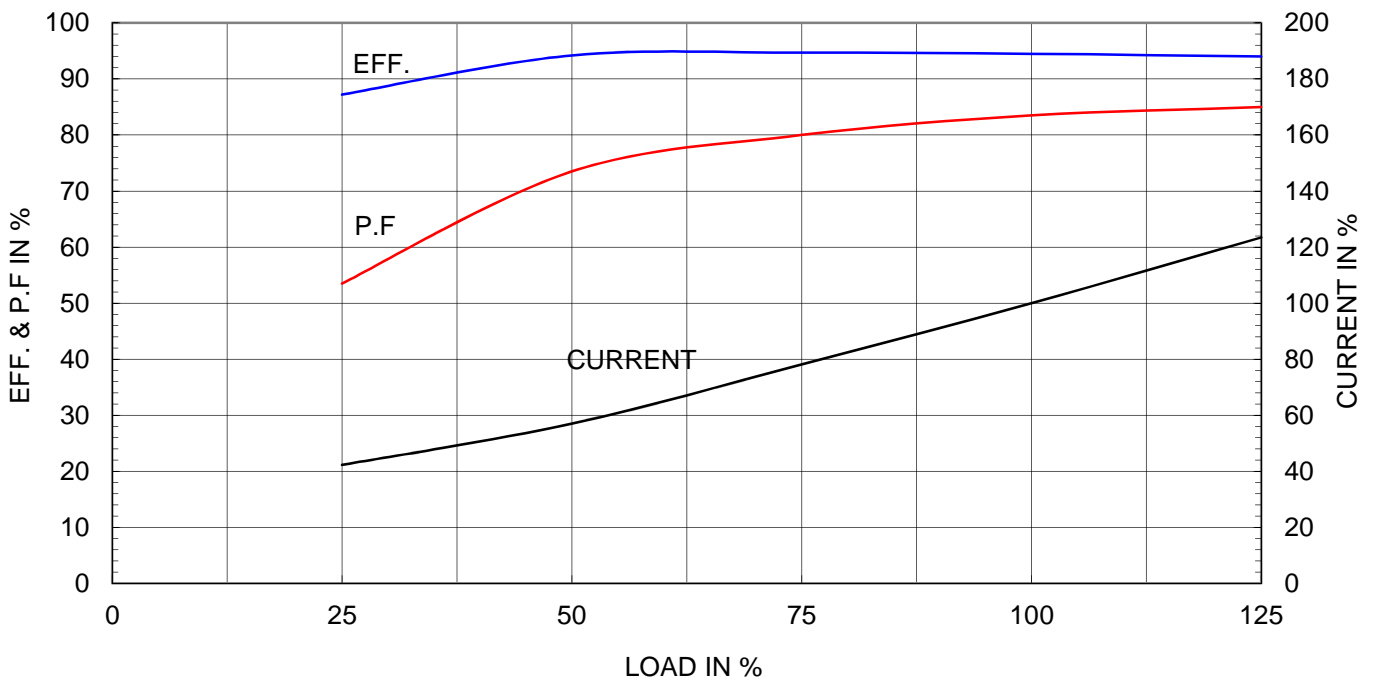
Type	:	HLP-45/6
Full Load Torque	:	37.0 Kg.m
Motor moment of Inertia (J)	:	1.555 Kg.m ²
Load moment of Inertia (J)	:	101.050 Kg.m ²

45 kW	6 P	60 Hz	
Speed at Full Load :		1185 RPM	
Rated Voltage	440V	380V	220V
Full Load Current	74.8A	86.6A	149.7A

SPEED VS TORQUE & CURRENT CURVE



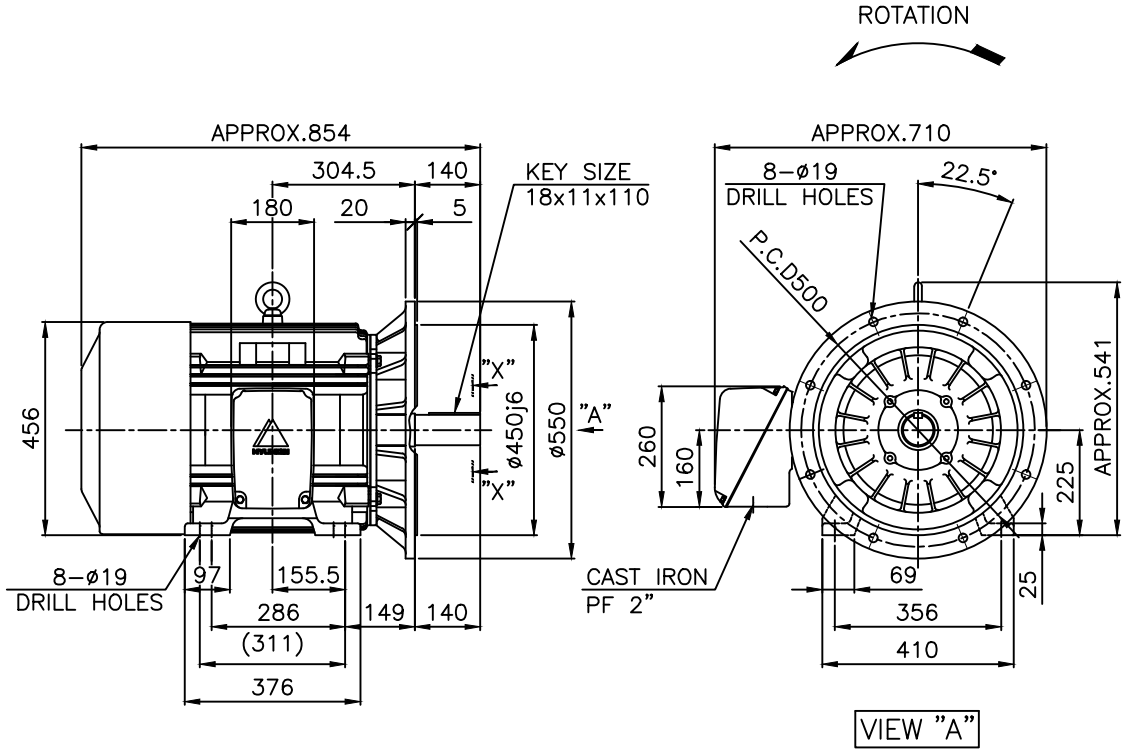
OUTPUT VS EFF., P.F & CURRENT CURVE



본 도면은 현대일렉트릭(주) 재산이므로
허가없이 복사할 수 없음 (취급주의)

THIS DRAWING IS PROPRIETARY TO HYUNDAI ELECTRIC. NO PART OF THIS DRAWING
MAY BE REPRODUCED WITHOUT THE PERMISSION OF HYUNDAI ELECTRIC.

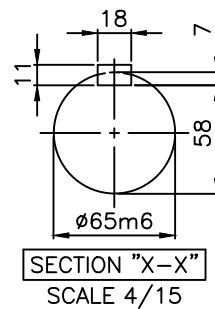
	1	2	3	4				
▽	50S	REV	DATE	CONTENTS	REVD BY	CHKD BY	CHKD BY	APPD BY
▽▽	12.5S							
▽▽▽	3.2S							
▽▽▽▽	0.4S							



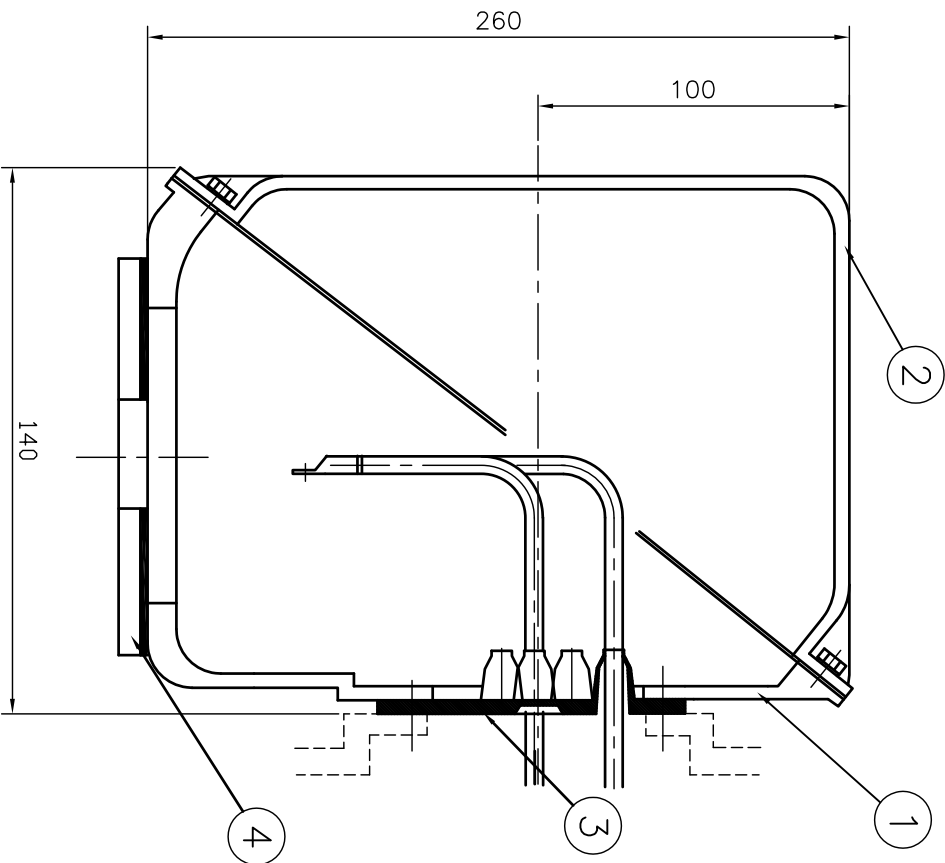
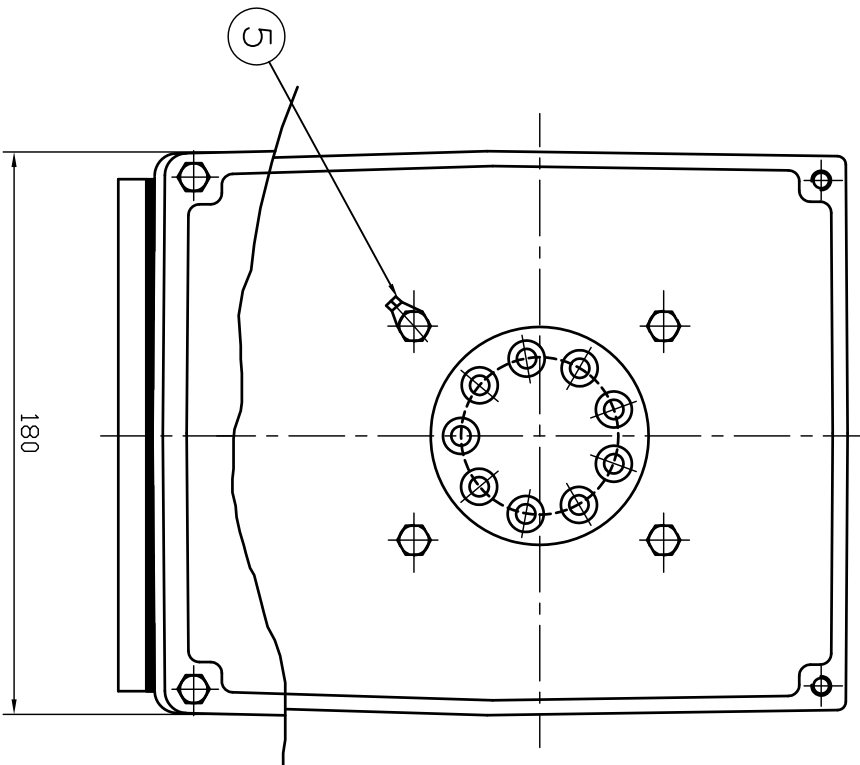
NOTE

1.TOLERANCE :

CENTER HEIGHT	225	0	-0.5
BASE HOLES	ø19	+0.52	0
FLANGE HOLES	ø19	+0.52	0
RABBET DIAMETER	ø450	±0.020	
SHAFT DIAMETER	ø65	+0.030	+0.011
KEYWAY WIDTH	18	-0.018	-0.061
KEYWAY DEPTH	7	+0.2	0
KEY WIDTH	18	0	-0.043
KEY HEIGHT	11	0	-0.110



APPD BY	S.K.HAN	UNIT	mm	SUBJECT	KS, IEC Fr.225S-4-20P	DWG SIZE	A4 (1:15)
CHKD BY	S.Y.KIM	SCALE	1/15	TITLE	OUTLINE		
CHKD BY	R.G.KIM	PROJEC'N	3각법(3rd Angle)	REF. NO		Sheet No.	of
DSND BY	S.H.YUN	DATE	2018-08-16	DWG NO	LM-T1221B4PL001	Revision No.	1



REV	DATE	CONTENTS	REVD BY	CHKD BY	Q.P CHK	APPD BY
1						
2						

1	EARTH TERMINAL LUG					5
1	CABLE ENTRY PLATE					4
1	GASKET	NBR				3
1	TERMINAL BOX COVER	CAST IRON				2
1	TERMINAL BOX BODY	CAST IRON				1

QTY	DESCRIPTION	MATERIAL	DIMENSION	WEIGHT	PART NO.	REMARK
APPD BY	권진오	UNIT	MM			CAD PROU \ FILE
Q.P CHK	주영철	SCALE	NONE			T-BOX-M \ 3M016881
CHKD BY	권오철	PROJEC'N	3 레벨(3rd Angle)			
DSND BY	김현태	DATE	92.06.05			

REF. NO	DWG NO	SHEET NO	TITLE
	3M-016881	0	TERMINAL BOX ASS'Y



Sheet No. of
Revision No. 0