

# AC INDUCTION MOTOR DATA SHEET

Model No.or RFQ No.	Item No.	Rev. No. [ 0 ]
Project Name	Project No.	Quantity sets

GENERAL SPECIFICATION		PERFORMANCE DATA		
Frame Size	200L	Rated Output	37 kW	50 HP
Type	HLP-37/4	Number of Poles	4	
Enclosure(Protection)	Totally Enclosed ( IP55 )	Rotor Type	Squirrel Cage	
Method of Cooling	IC411(FC)	Starting Method*	<input checked="" type="checkbox"/> D.O.L	<input type="checkbox"/> Y- Δ
Rated Frequency	60 Hz	Rated Voltage	440 V	380 V 220 V
Number of Phases	3	Current	Full Load	62.7 A 72.5 A 125.3 A
Insulation Class	<input checked="" type="checkbox"/> F <input type="checkbox"/> B <input type="checkbox"/> H	Locked-rotor**	800 %	800 % 800 %
Temp. Rise at full load (by resistance method)	at 1.0 S.F 80 deg. C	Efficiency	50% Load 93.3 %	
Motor Location	<input checked="" type="checkbox"/> Indoor <input type="checkbox"/> Outdoor		75% Load 94.5 %	
Altitude	Less than 1000 meter		100% Load 94.5 %	
Relative Humidity	Less than 80 %	Power Factor(p.u)	50% Load 0.740	
Ambient Temp.	40 deg. C (Max.)		75% Load 0.795	
Duty Type	Continuous ( S1 )		100% Load 0.820	
Service Factor	1.15	Speed at Full Load	1780 r.p.m	
Mounting	<input type="checkbox"/> B3 <input type="checkbox"/> B5 <input checked="" type="checkbox"/> V1 <input type="checkbox"/> B3/B5	Torque	Full Load 20.2 kg·m	
Bearing	Type	Anti-Friction	Locked-rotor** 150 %	
	DE/N-DE	6313ZC3 / 6211ZC3	Breakdown** 220 %	
Lubricant	Grease(Gadus S2 V 100 2)	Moment of Inertia (J)	Load(Max.) 20.200 kg·m <sup>2</sup>	
External Thrust	Not applicable		Motor 0.350 kg·m <sup>2</sup>	
Coupling Method	<input checked="" type="checkbox"/> Direct <input type="checkbox"/> V-Belt	Sound Pressure Level (No-load & mean value at 1m from motor)	77 dB(A)	
Shaft Extension	<input checked="" type="checkbox"/> Single <input type="checkbox"/> Double	Vibration	2.2 mm/sec (r.m.s)	
Terminal	Main <input type="checkbox"/> Steel <input checked="" type="checkbox"/> Cast Iron	Permissible number of consecutive starts	Cold 3 times	
Box	Aux.		Hot 2 times	
	Location	<input type="checkbox"/> Yes <input checked="" type="checkbox"/> No	Paint	Munsell No. 4.4PB5.5/5.6(VL-451)
Application	Refer to Outline Drawing			
Area classification	Non-Hazardous			
Type of Ex-Protection	Not applicable			
Applicable Standard	KS,IEC, NEMA MG1 Part30(Vpeak)			

ACCESSORIES	SUBMITTAL DRAWING		
	Outline Dimension Drawing	Motor Weight(Approx.)	
	B3	LM-T1205B3PL001	297 kg
	B5	LM-T1205B5PL001	327 kg
	V1	LM-T1205V1PL001	327 kg
	B3/B5	LM-T1205B4PL001	327 kg
	Main T-Box Ass'y	3M-145864	

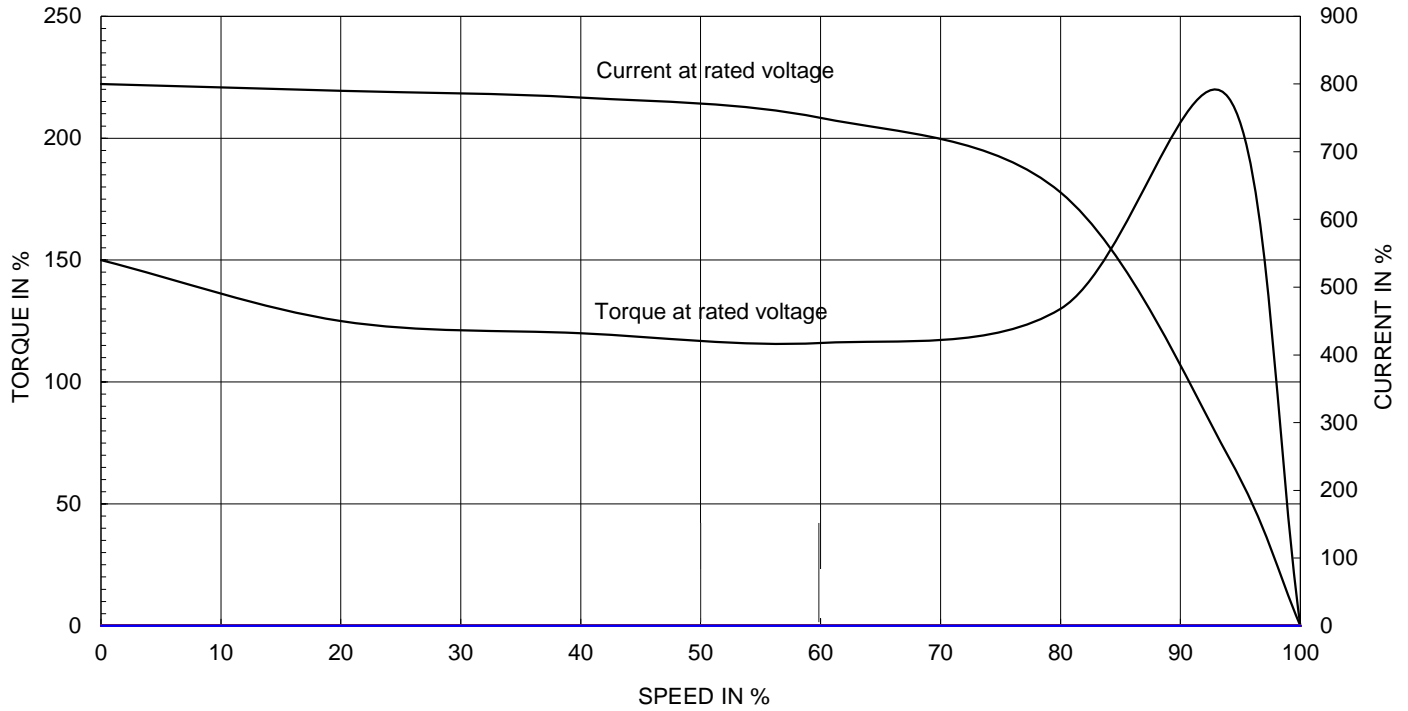
SPARE PARTS	REMARK	Premium Efficiency		
	*. For use on PWM VFD 10:1VT, 3:1CT@1.0S.F&F Temp. rise			
		Date	DSND	CHKD
		2015-09-05	R.G. KIM	-
				CHKD
				APPD
				O.J. KIM
				S.H. GO

Note: Others not mentioned in this data sheet shall be in accordance with maker standard.  
 Above technical data are only design values and shall be guaranteed with tolerance of applicable standard.  
 Inspection and performance test shall be maker standard, if not mentioned.  
 \* In case of Inverter-Fed Motor, performance data is based on sine wave tests.  
 \*\* Data is based on when the motor is supplied at rated voltage & frequency, and the data is expressed as a percentage of full-load value.

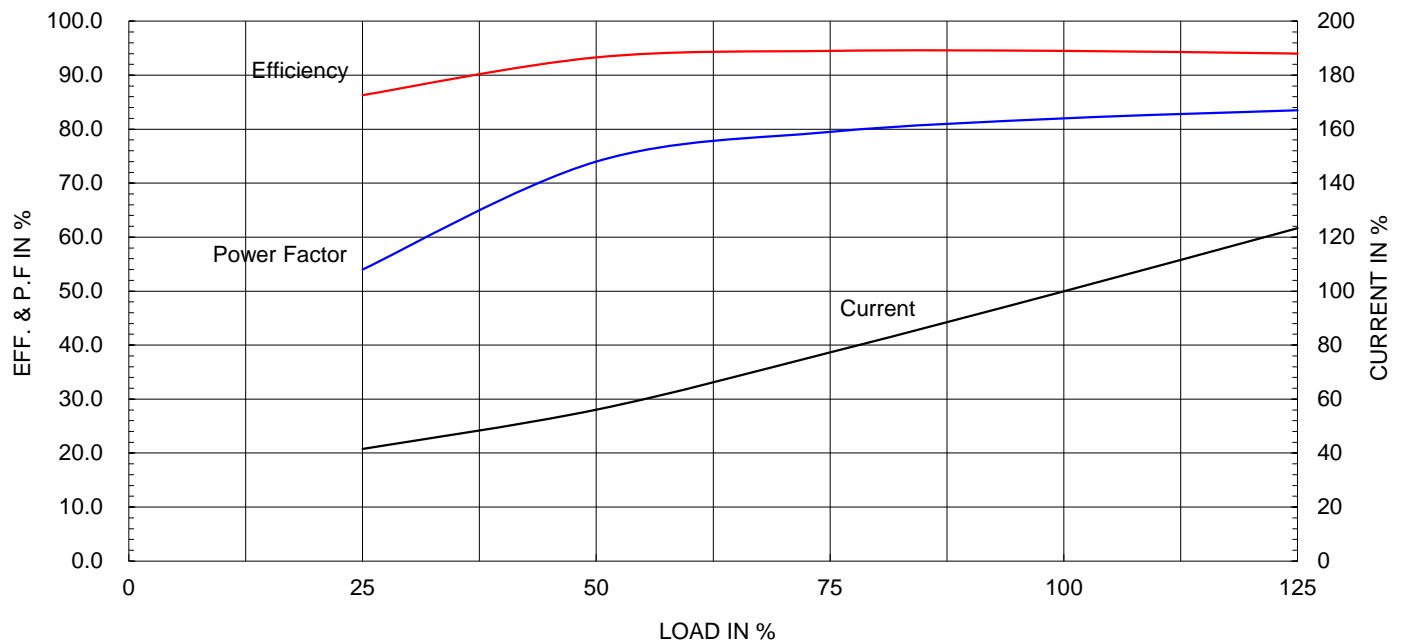
Type :	HLP-37/4	
Full Load Torque :	20.3	kg.m
Motor moment of Inertia (J) :	0.350	kg.m <sup>2</sup>
Load moment of Inertia (J) :	20.200	kg.m <sup>2</sup>

37 kW	4 P	60 Hz
Speed at Full Load :		1780 RPM
Rated Voltage	380V	
Full Load Current	72.6 A	

SPEED VS TORQUE & CURRENT CURVE



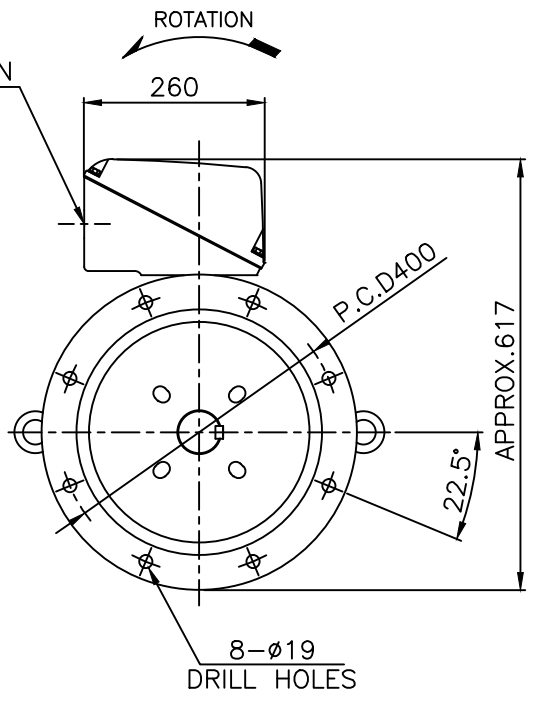
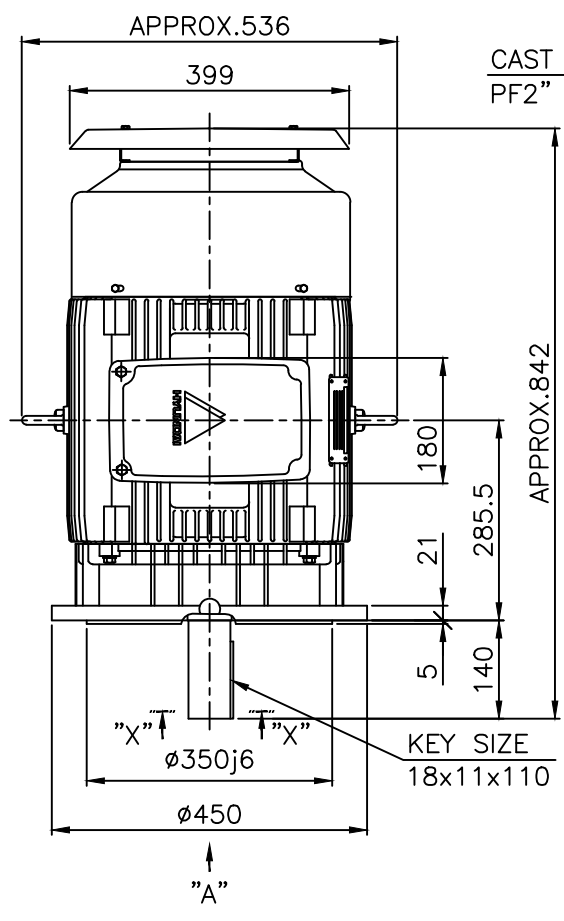
OUTPUT VS EFF., P.F & CURRENT CURVE



본 도면은 현대일렉트릭(주) 재산이므로  
허가없이 복사할 수 없음 (취급주의)

THIS DRAWING IS PROPRIETARY TO HYUNDAI ELECTRIC. NO PART OF THIS DRAWING  
MAY BE REPRODUCED WITHOUT THE PERMISSION OF HYUNDAI ELECTRIC.

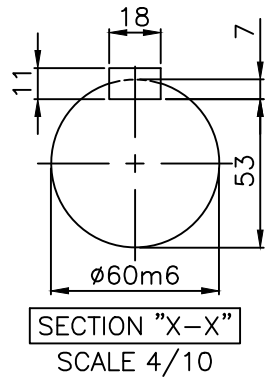
	1	2	3	4				
▽	50S	REV	DATE	CONTENTS	REVD BY	CHKD BY	CHKD BY	APPD BY
▽▽	12.5S							
▽▽▽	3.2S							
▽▽▽▽	0.4S							



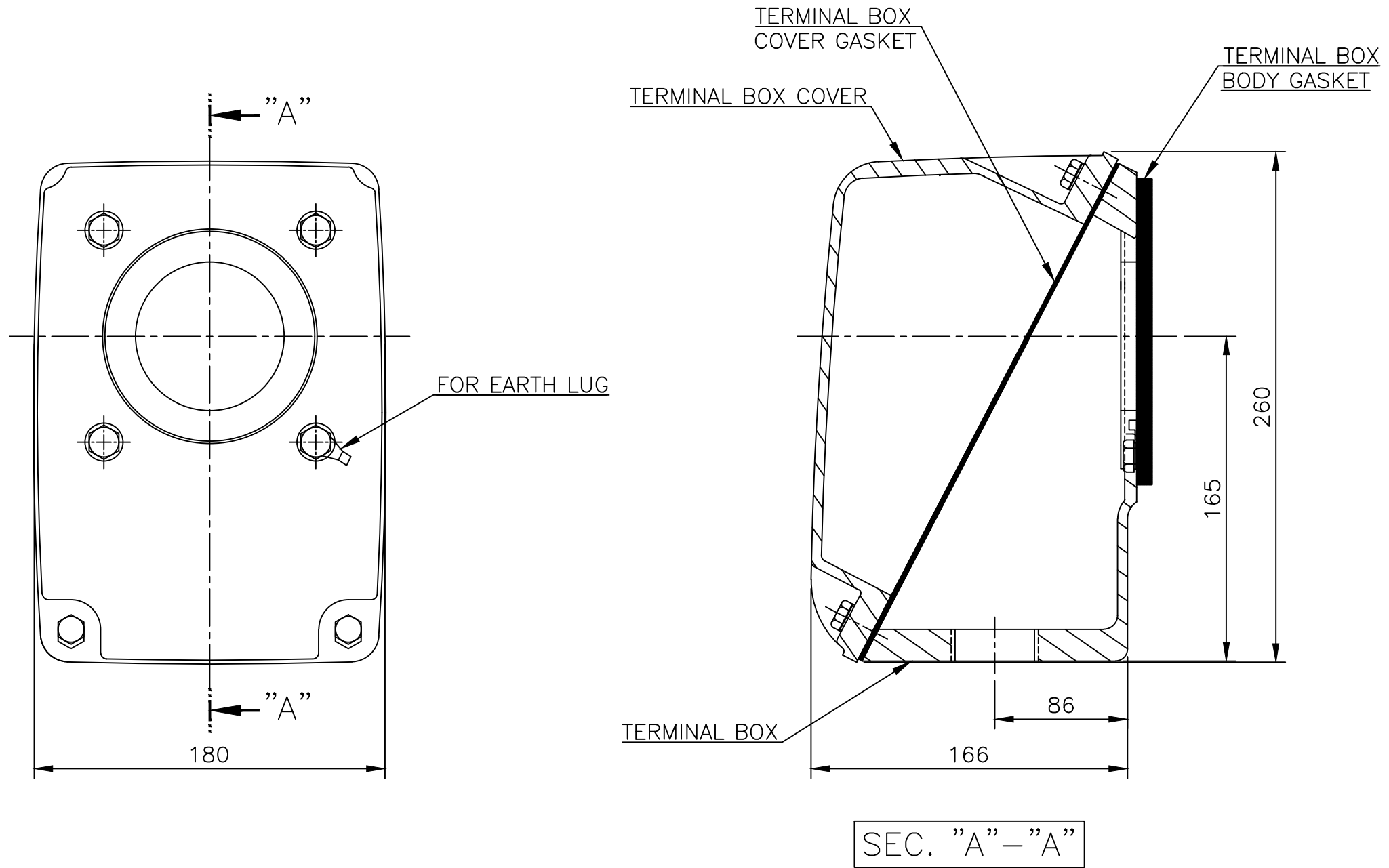
**NOTE**

1.TOLERANCE :

FLANGE HOLES	ø19	+0.52 0
RABBET DIAMETER	ø350	±0.018
SHAFT DIAMETER	ø60	+0.030 +0.011
KEYWAY WIDTH	18	0 -0.043
KEYWAY DEPTH	7	+0.2 0
KEY WIDTH	18	0 -0.043
KEY HEIGHT	11	0 -0.110



APPD BY	S.K.HAN	UNIT	mm	SUBJECT	KS, IEC Fr.200L-4~20P	DWG SIZE	A4 ( 1:10 )
CHKD BY	S.Y.KIM	SCALE	1/10			TITLE	OUTLINE
CHKD BY	R.G.KIM	PROJEC'N	3각법 (3rd Angle)	REF. NO		Sheet No.	of
DSND BY	S.H.YUN	DATE	2018-07-05	DWG NO	LM-T1205V1PL001	Revision No.	3
				REF. NO		Sheet No. of	
				DWG NO		Revision No.	



▽	50S
▽▽	12.5S
▽▽▽	3.2S
▽▽▽▽	0.4S

REV	DATE	CONTENTS	REVD BY	CHKD BY	CHKD BY	APPD BY

일반가공차		일반제관공차	
1-4	±0.1	6-30	±0.5
4-18	±0.2	30-120	±0.8
18-63	±0.3	120-315	±1.2
63-250	±0.5	315-1000	±2.0
250-	±0.8	1000-	±3.0

Q'TY	DESCRIPTION	MATERIAL	DIMENSION	WEIGHT	PART NO.	REMARK	NO.
APPD BY	S.K.HAN	UNIT	mm	SUBJECT	FR.200 (CAST IRON)	DWG SIZE	A3 (1:2)
CHKD BY	S.Y.KIM	SCALE	1/2	TITLE Main Terminal Box Assembly			
CHKD BY	R.G.KIM	PROJEC'N	3각법 (3rd Angle)				
DSND BY	H.K.LEE	DATE	2011-08-30	REF. NO.	227B8003CB5	Sheet No.	of
				DWG NO.	3M-145864	Revision No.	2