



AC INDUCTION MOTOR DATA SHEET

Model No. or RFQ No.		Item No.	Rev. No.	[0]
Project Name		Project No.	Quantity	sets

GENERAL SPECIFICATION		PERFORMANCE DATA		
Frame Size	200L	Rated Output	37 kW	50 HP
Type	HLP-37/2	Number of Poles	2	
Enclosure(Protection)	Totally Enclosed (IP55)	Rotor Type	Squirrel Cage	
Method of Cooling	IC411(FC)	Starting Method*	<input checked="" type="checkbox"/> D.O.L	<input type="checkbox"/> Y- Δ
Rated Frequency	60 Hz	Rated Voltage	440 V	380 V 220 V
Number of Phases	3	Current	Full Load	58.0 A 67.2 A 116.0 A
Insulation Class	<input checked="" type="checkbox"/> F <input type="checkbox"/> B <input type="checkbox"/> H	Locked-rotor**	800 %	800 % 800 %
Temp. Rise at full load (by resistance method)		Efficiency		
at 1.0 S.F	80 deg. C	50% Load	92.0 %	
Motor Location	<input checked="" type="checkbox"/> Indoor <input type="checkbox"/> Outdoor	75% Load	93.2 %	
Altitude	Less than 1000 meter	100% Load	93.0 %	
Relative Humidity	Less than 80 %	Power Factor(p.u)		
Ambient Temp.	40 deg. C (Max.)	50% Load	0.865	
Duty Type	Continuous (S1)	75% Load	0.890	
Service Factor	1.15	100% Load	0.900	
Mounting	<input type="checkbox"/> B3 <input type="checkbox"/> B5 <input type="checkbox"/> V1 <input checked="" type="checkbox"/> B3/B5	Speed at Full Load	3560 r.p.m	
Bearing	Type	Anti-Friction	Torque	
	DE/N-DE	6212ZC3 / 6211ZC3	Full Load	10.1 kg·m
	Lubricant	Grease(Gadus S2 V 100 2)	Locked-rotor**	160 %
External Thrust	Not applicable	Breakdown**	230 %	
Coupling Method	<input checked="" type="checkbox"/> Direct <input type="checkbox"/> V-Belt	Moment of Inertia (J)		
Shaft Extension	<input checked="" type="checkbox"/> Single <input type="checkbox"/> Double	Load(Max.)	4.750 kg·m ²	
Terminal	Main <input type="checkbox"/> Steel <input type="checkbox"/> Cast Iron	Motor	0.180 kg·m ²	
Box	Aux.	<input type="checkbox"/> Yes <input checked="" type="checkbox"/> No	Sound Pressure Level (No-load & mean value at 1m from motor)	
	Location	Refer to Outline Drawing	86 dB(A)	
Application		Vibration	2.2 mm/sec (r.m.s)	
Area classification	Non-Hazardous	Permissible number of consecutive starts	Cold	3 times
Type of Ex-Protection	Not applicable	Hot	2 times	
Applicable Standard	KS,IEC, NEMA MG1 Part30(Vpeak)	Paint	Munsell No.	4.4PB5.5/5.6(VL-451)

ACCESSORIES	SUBMITTAL DRAWING			
	Outline Dimension Drawing	Motor Weight(Approx.)		
	B3	LM-T1205B3CL001	297	kg
	B5	LM-T1205B5CL001	327	kg
	V1	LM-T1205V1CL001	327	kg
	B3/B5	LM-T1205B4CL001	327	kg
	Main T-Box Ass'y	3M-145864		

SPARE PARTS	REMARK	Premium Efficiency			
	*. For use on PWM VFD 10:1VT, 3:1CT@1.0S.F&F Temp. rise				

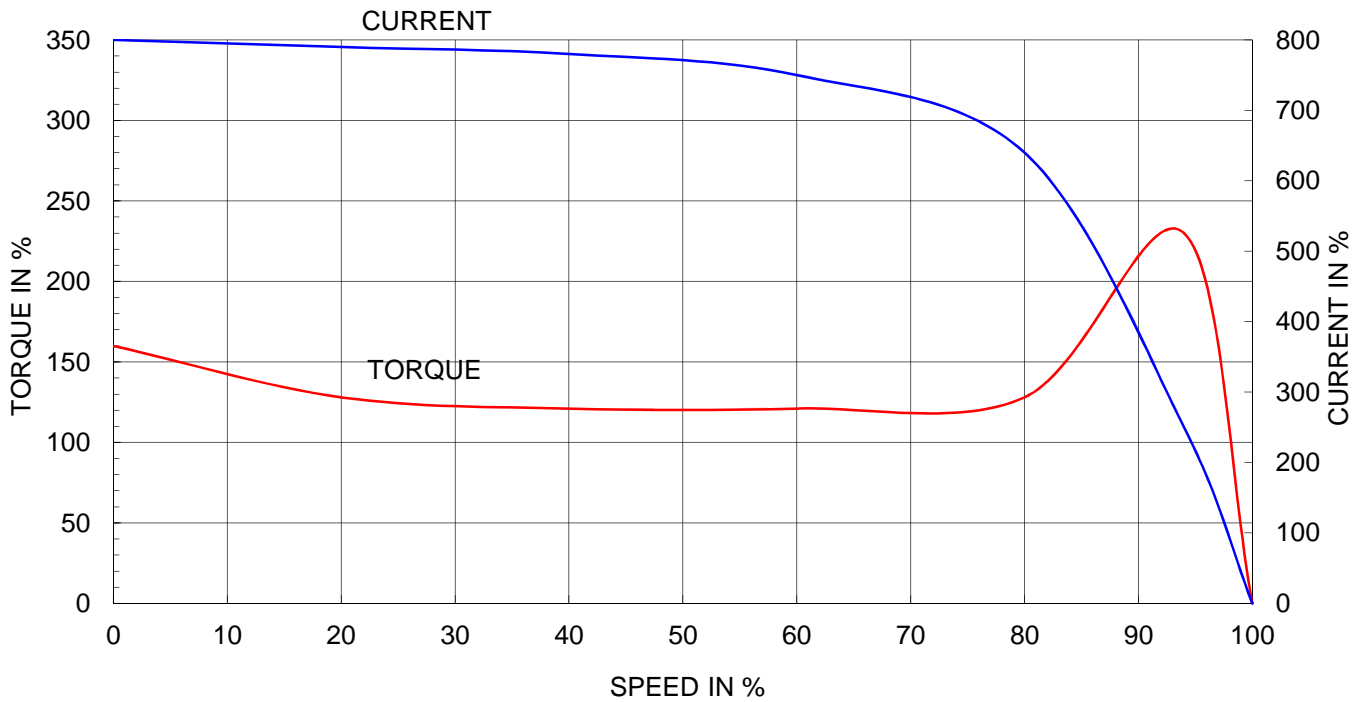
Date	DSND	CHKD	CHKD	APPD
2015-09-05	R.G. KIM	-	O.J. KIM	S.H. GO

Note: Others not mentioned in this data sheet shall be in accordance with maker standard.
 Above technical data are only design values and shall be guaranteed with tolerance of applicable standard.
 Inspection and performance test shall be maker standard, if not mentioned.
 * In case of Inverter-Fed Motor, performance data is based on sine wave tests.
 ** Data is based on when the motor is supplied at rated voltage & frequency, and the data is expressed as a percentage of full-load value.

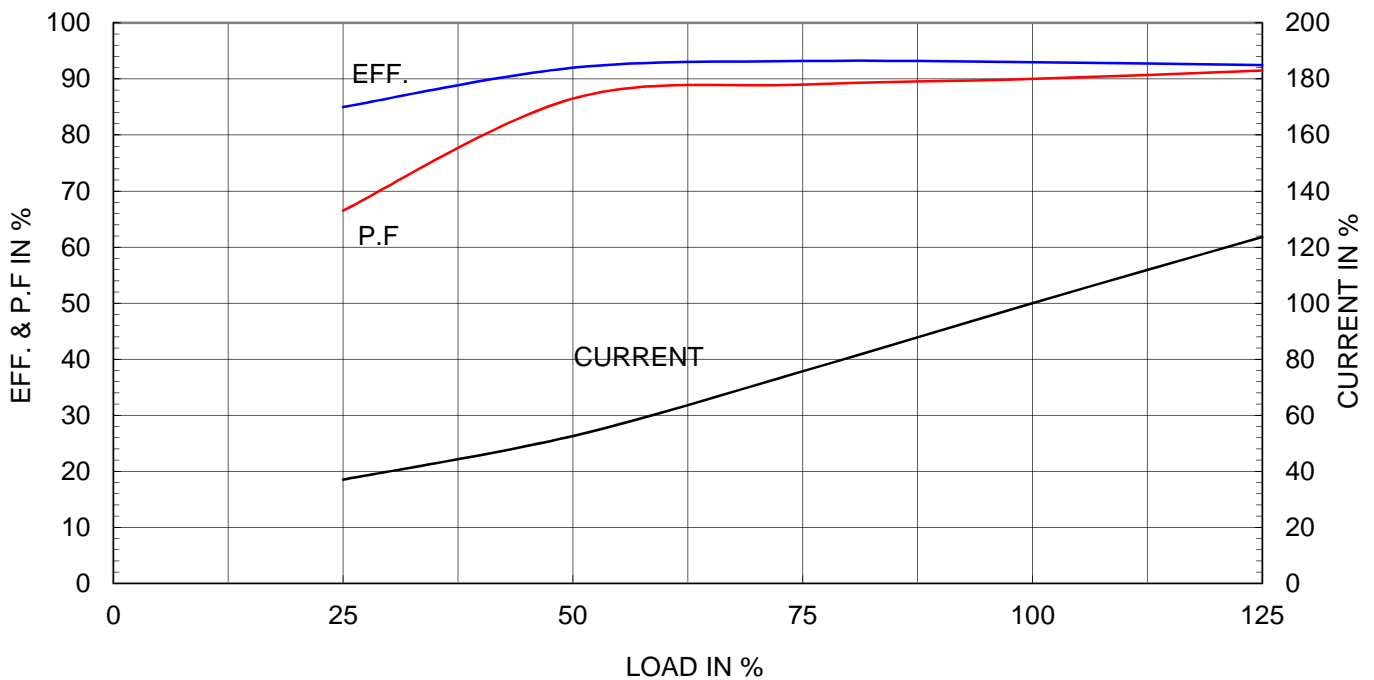
Type	:	HLP-37/2
Full Load Torque	:	10.1 Kg.m
Motor moment of Inertia (J)	:	0.180 Kg.m ²
Load moment of Inertia (J)	:	4.750 Kg.m ²

37 kW	2 P	60 Hz	
Speed at Full Load :			
3560 RPM			
Rated Voltage	440V	380V	220V
Full Load Current	58.0A	67.2A	116.0A

SPEED VS TORQUE & CURRENT CURVE



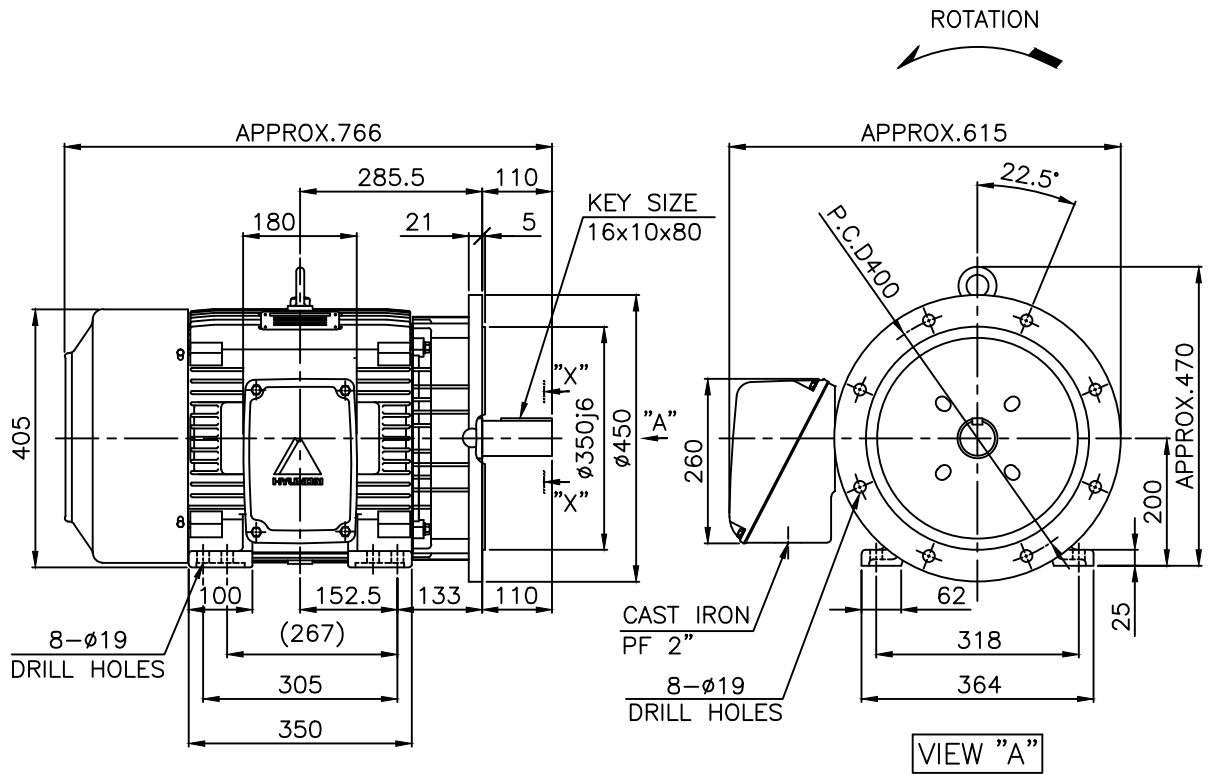
OUTPUT VS EFF., P.F & CURRENT CURVE



본 도면은 현대일렉트릭(주) 재산이므로
허가없이 복사할 수 없음 (취급주의)

THIS DRAWING IS PROPRIETARY TO HYUNDAI ELECTRIC. NO PART OF THIS DRAWING
MAY BE REPRODUCED WITHOUT THE PERMISSION OF HYUNDAI ELECTRIC.

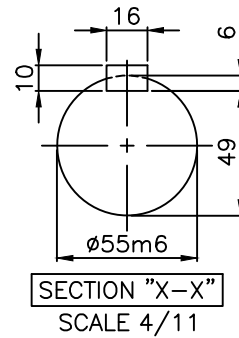
	1	2	3	4				
▽	50S	REV	DATE	CONTENTS	REVD BY	CHKD BY	CHKD BY	APPD BY
▽▽	12.5S							
▽▽▽	3.2S							
▽▽▽▽	0.4S							



NOTE

1.TOLERANCE :

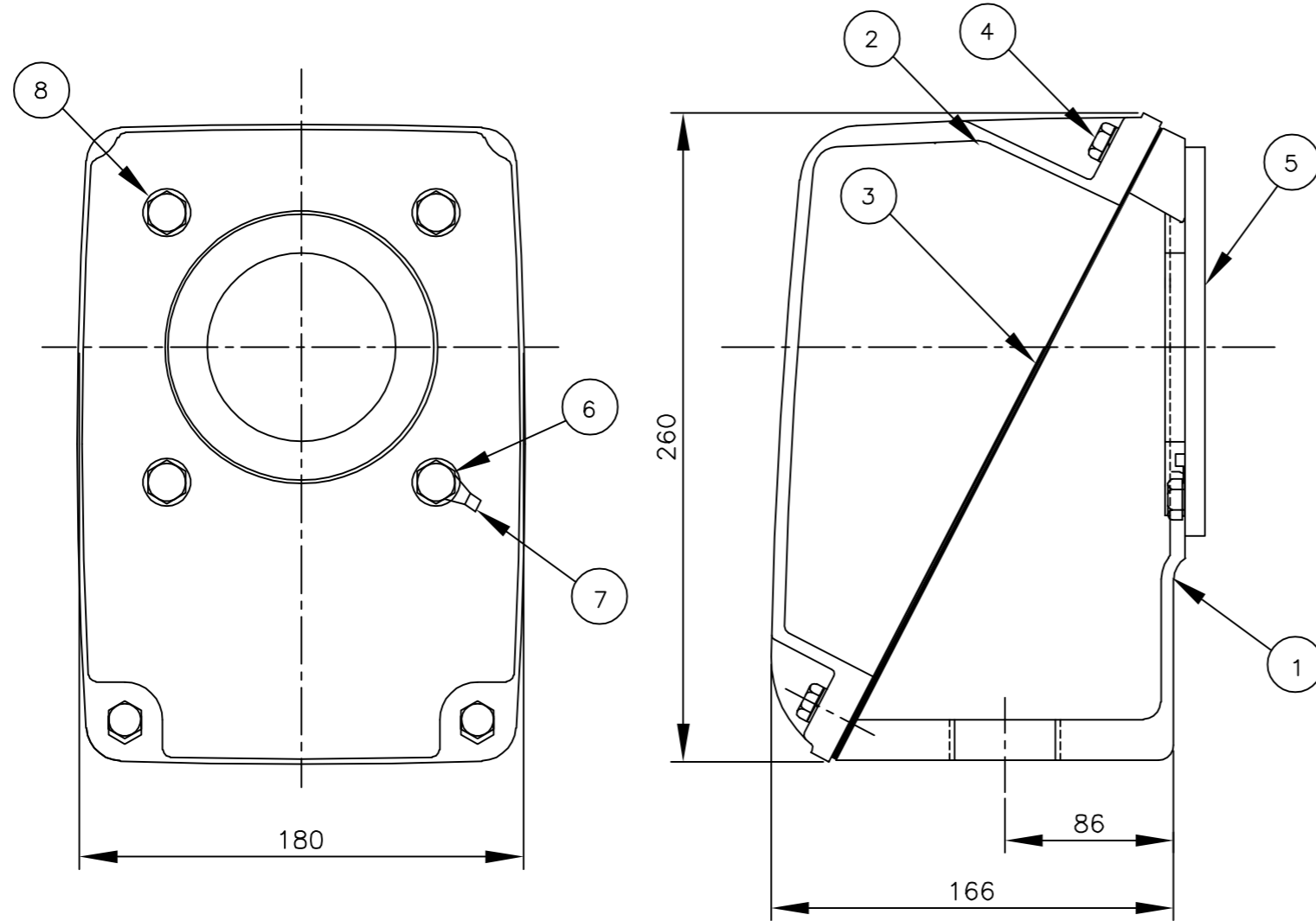
CENTER HEIGHT	200	0	-0.5
BASE HOLES	ø19	+0.52	0
FLANGE HOLES	ø19	+0.52	0
RABBET DIAMETER	ø350	±0.018	
SHAFT DIAMETER	ø55	+0.030	+0.011
KEYWAY WIDTH	16	0	-0.043
KEYWAY DEPTH	6	+0.2	0
KEY WIDTH	16	0	-0.043
KEY HEIGHT	10	0	-0.090



APPD BY	S.K.HAN	UNIT	mm	SUBJECT	KS, IEC Fr.200L-2P	DWG SIZE	A4 (1:11)
CHKD BY	S.Y.KIM	SCALE	1/11	TITLE	OUTLINE		
CHKD BY	R.G.KIM	PROJEC'N	3각법 (3rd Angle)	REF. NO		Sheet No.	of
DSND BY	S.H.YUN	DATE	2018-08-14	DWG NO	LM-T1205B4CL001	Revision No.	1

본 도면은 현대중공업(주) 재산이므로
허가없이 복사할 수 없음 (취급유의)

THIS DRAWING IS PROPRIETARY TO HHI. NO PART OF THIS DRAWING
MAYBE REPRODUCED WITHOUT THE PERMISSION OF HHI.



PT	DESCRIPTION	MATERIAL	DIMENSION	Q, TY
1	CONDUIT BOX	FC20		1
2	C/B COVER	FC20		1
3	GASKET(COVER)	N.B.R	T2X170X210	1
4	SCREW(COVER)	S45C	M8XL20	4
5	GASKET(C/B)	N.B.R		1
6	SCREW(C/B)	S45C	M8XL20	4
7	TERMINAL GROUND	CU	T1.6	1
8	WASHER	S45C	M8 X L10	4

▽	50S
▽▽	12.5S
▽▽▽	3.2S
▽▽▽▽	0.4S

REV	DATE	CONTENTS	REVD BY	CHKD BY	CHKD BY	APPD BY
1	12.01.27	CABLE 및 TAP 표시 삭제.	김양규	김옥진	김진홍	강경중

일반가공공차		일반제관공차	
1-4	±0.1	6-30	±0.5
4-18	±0.2	30-120	±0.8
18-63	±0.3	120-315	±1.2
63-250	±0.5	315-1000	±2.0
250-	±0.8	1000-	±3.0

Q'TY	DESCRIPTION	MATERIAL	DIMENSION	WEIGHT	PART NO.	REMARK	NO.
APPD BY	강경중	UNIT	mm	SUBJECT	IEC-Fr.200		DWG SIZE
CHKD BY	이노덕	SCALE	1/2	TITLE	Main Terminal Box Assembly		A3 (1:2)
CHKD BY	김인규	PROJEC'N	3각법(3rd Angle)	REF. NO	227B8003CB5	Sheet No.	of
DSND BY	김은성	DATE	2011-08-30	DWG NO	3M-145864	Revision No.	1