



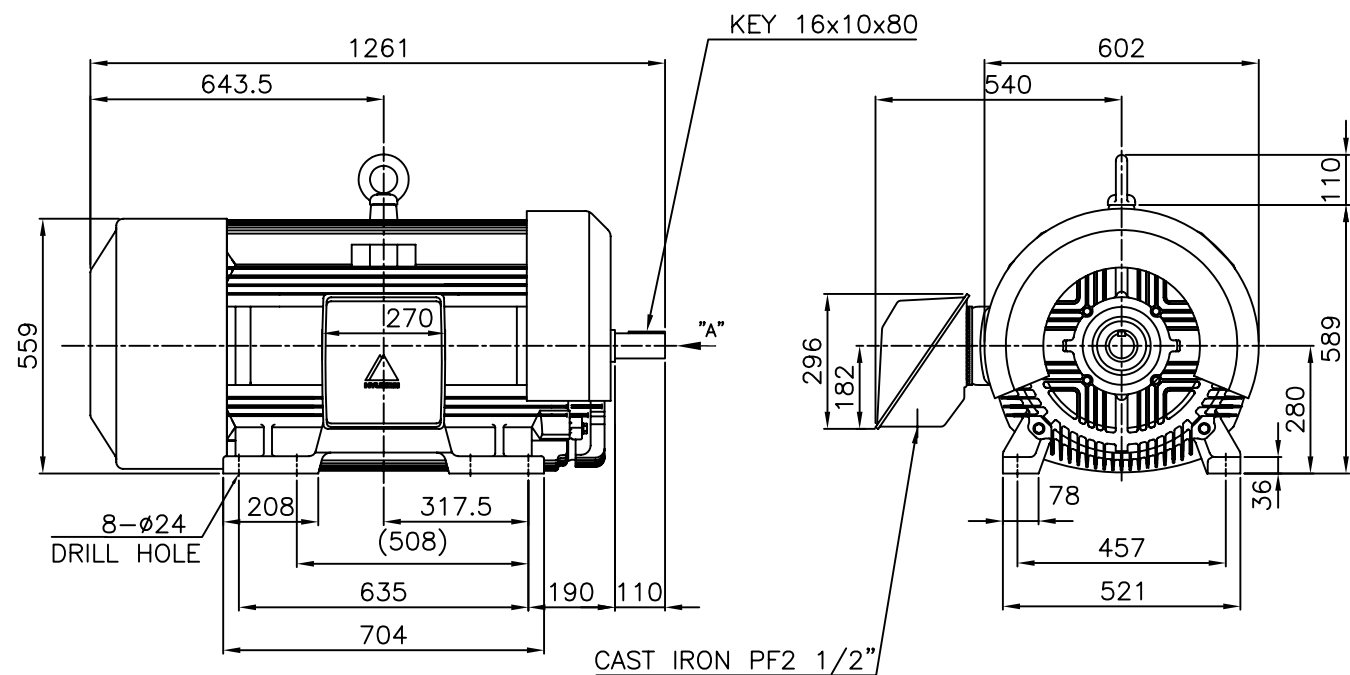
DATA SHEET of AC INDUCTION MOTOR

**268 HP - 2 P
TE**

DESIGN NO : **KS C4202-1996**

HHI W230-131-1 * In case of Inverter or V.V.V.F Motor:Performance data is based on sine wave tests. A4(210mm X 297mm)

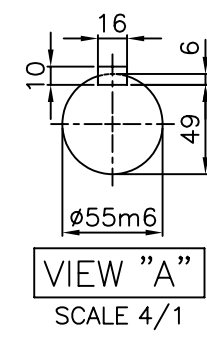
1		2		3		4	
		<h1>TEFC</h1> <h2>THREE PHASE INDUCTION MOTOR</h2>				TYPE (1) TNB , TDB CAST IRON FRAME	



NOTE

1.TOLERANCE :

CENTER HEIGHT	280	$\begin{matrix} 0 \\ -1.0 \end{matrix}$
BASE HOLE	$\phi 24$	$\begin{matrix} +0.43 \\ 0 \end{matrix}$
SHAFT DIAMETER	$\phi 55$	$\begin{matrix} +0.030 \\ +0.011 \end{matrix}$
KEYWAY WIDTH	16	$\begin{matrix} -0.018 \\ -0.061 \end{matrix}$
KEYWAY DEPTH	6	$\begin{matrix} +0.2 \\ 0 \end{matrix}$
KEY WIDTH	16	$\begin{matrix} 0 \\ -0.043 \end{matrix}$
KEY HEIGHT	10	$\begin{matrix} 0 \\ -0.090 \end{matrix}$



2.The type (1)-"TNB , TDB" is for HHI's standard products and it can be changed for customer's requirements or detail designing.

				TEFC STANDARD	
APPD BY	KANG K.J.	UNIT	MM	SUBJECT	KS Fr.280LL TEFC
CHKD BY	KIM O.J.	SCALE	1/17	CAD PROJ \ FILE	
CHKD BY	LEE N.D.	PROJEC'N	3rd Angle	MMSTDMTR/TJ8XAC50	
DSND BY	KIM RYANG GYU	DATE	2003.08.30	TITLE OUTLINE THREE-PHASE INDUCTION MOTOR	
				REF. NO	L2-Series
				DWG NO	TJ8XAC50
				Sheet No.	of
				Revision No.	0



HYUNDAI

HEAVY INDUSTRIES CO., LTD

PERFORMANCE CURVE

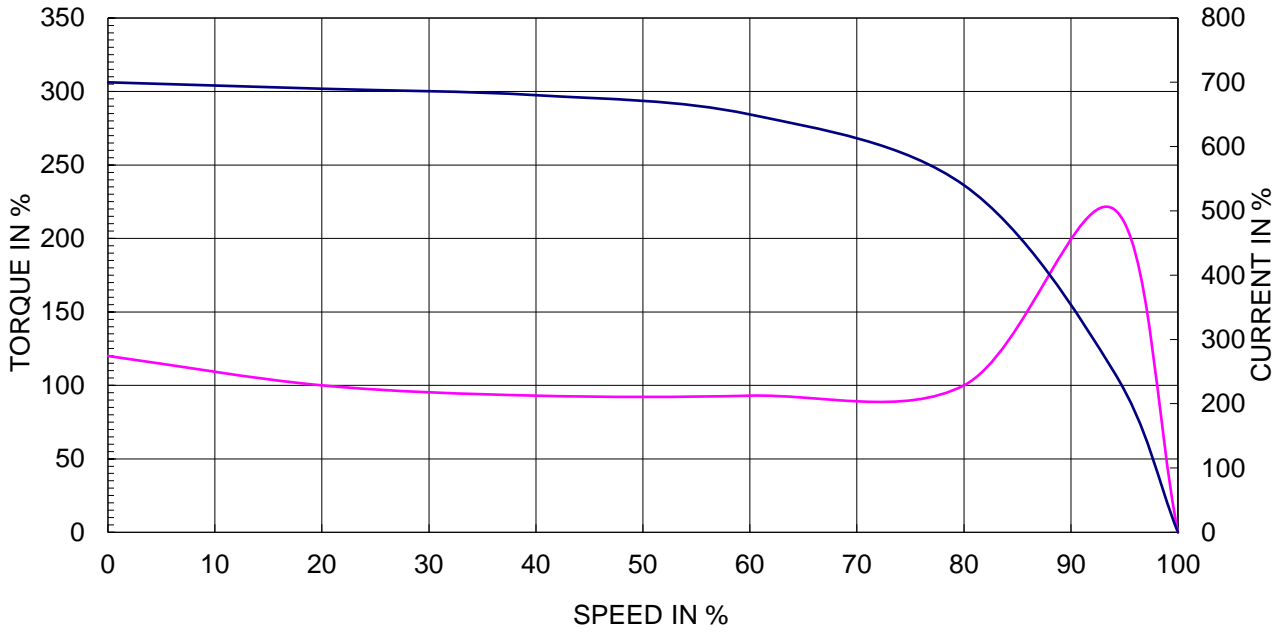
CURVE NO.

P-TNBJ8X02200

TYPE :		
RATED TORQUE :	54.6	Kg.m
GD2 OF MOTOR :	9.9	Kg.m ²
(ALLOWABLE) GD2 OF LOA	68.0	Kg.m ²

200 kW	2 P	60 Hz	
RATED SPEED :		3565 RPM	
VOLTAGE	440V	380 V	220V
RATED CURRENT	313.5A	363.0 A	627.1A

SPEED VS TORQUE & CURRENT CURVE



OUTPUT VS EFF., P.F & CURRENT CURVE

