



DATA SHEET of AC INDUCTION MOTOR

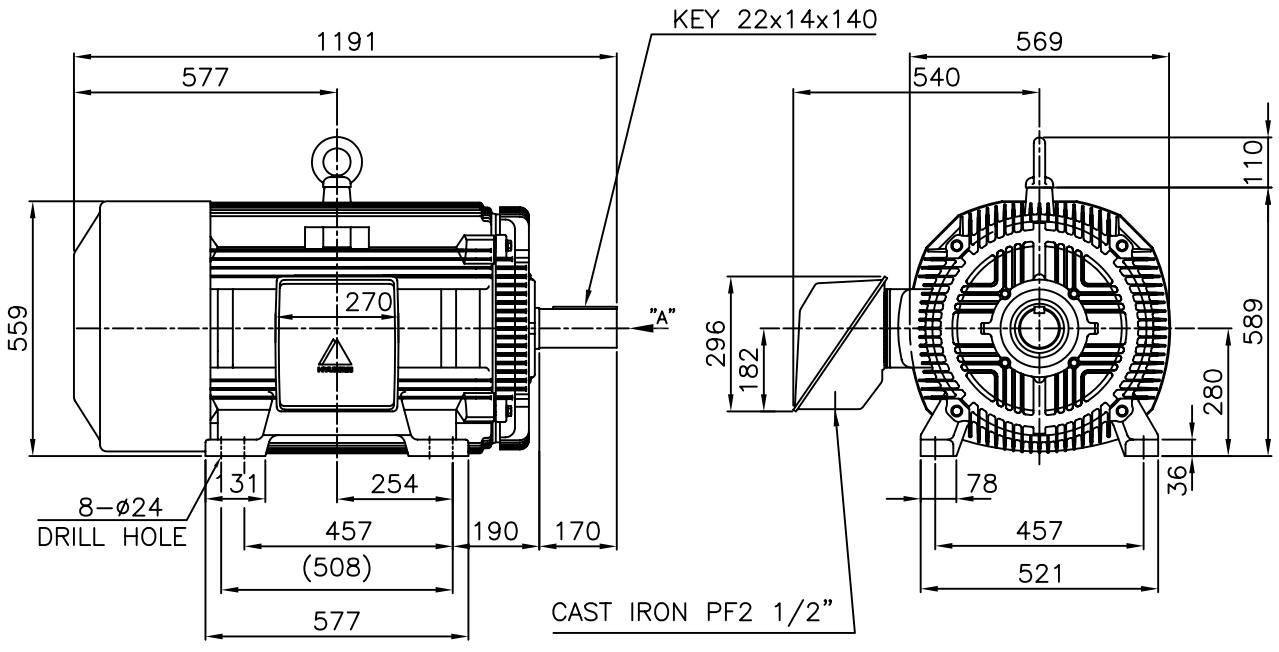
**214 HP - 4 P
TE**

DESIGN NO : **KS C4202-1996**

본 도면은 현대중공업(주) 재산이므로
허가없이 복사할 수 없음 (취급유의)

THIS DRAWING IS PROPRIETARY TO HHI. NO PART OF THIS DRAWING
MAYBE REPRODUCED WITHOUT THE PERMISSION OF HHI.

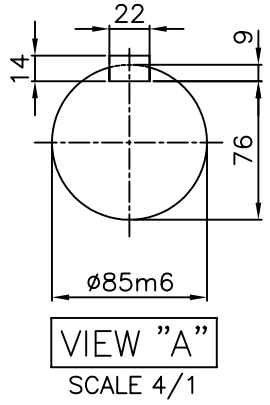
		<h1>TEFC</h1>		TYPE (1) TNB , TDB CAST IRON FRAME
		THREE PHASE INDUCTION MOTOR		



NOTE

1. TOLERANCE :

CENTER HEIGHT	280	$\begin{matrix} 0 \\ -1.0 \end{matrix}$
BASE HOLE	$\phi 24$	$\begin{matrix} +0.43 \\ 0 \end{matrix}$
SHAFT DIAMETER	$\phi 85$	$\begin{matrix} +0.035 \\ +0.013 \end{matrix}$
KEYWAY WIDTH	22	$\begin{matrix} -0.022 \\ -0.074 \end{matrix}$
KEYWAY DEPTH	9	$\begin{matrix} +0.2 \\ 0 \end{matrix}$
KEY WIDTH	22	$\begin{matrix} 0 \\ -0.052 \end{matrix}$
KEY HEIGHT	14	$\begin{matrix} 0 \\ -0.110 \end{matrix}$



2. The type (1) - "TNB , TDB" is for HHI's standard products and it can be changed for customer's requirements or detail designing.

TEFC STANDARD

APPD BY	KANG K.J.	UNIT	MM	SUBJECT	KS Fr.280L TEFC	CAD PROJ \ FILE	MMSTDMTR/TJ8LAP51
CHKD BY	KIM O.J.	SCALE	1/17	TITLE	OUTLINE THREE-PHASE INDUCTION MOTOR	Sheet No. of	
CHKD BY	LEE N.D.	PROJEC'N	3rd Angle	REF. NO		L2-Series	Revision No. 0
DSND BY	KIM RYANG GYU	DATE	2007.03.23	DWG NO	TJ8LAP51		



HYUNDAI

HEAVY INDUSTRIES CO., LTD

PERFORMANCE CURVE

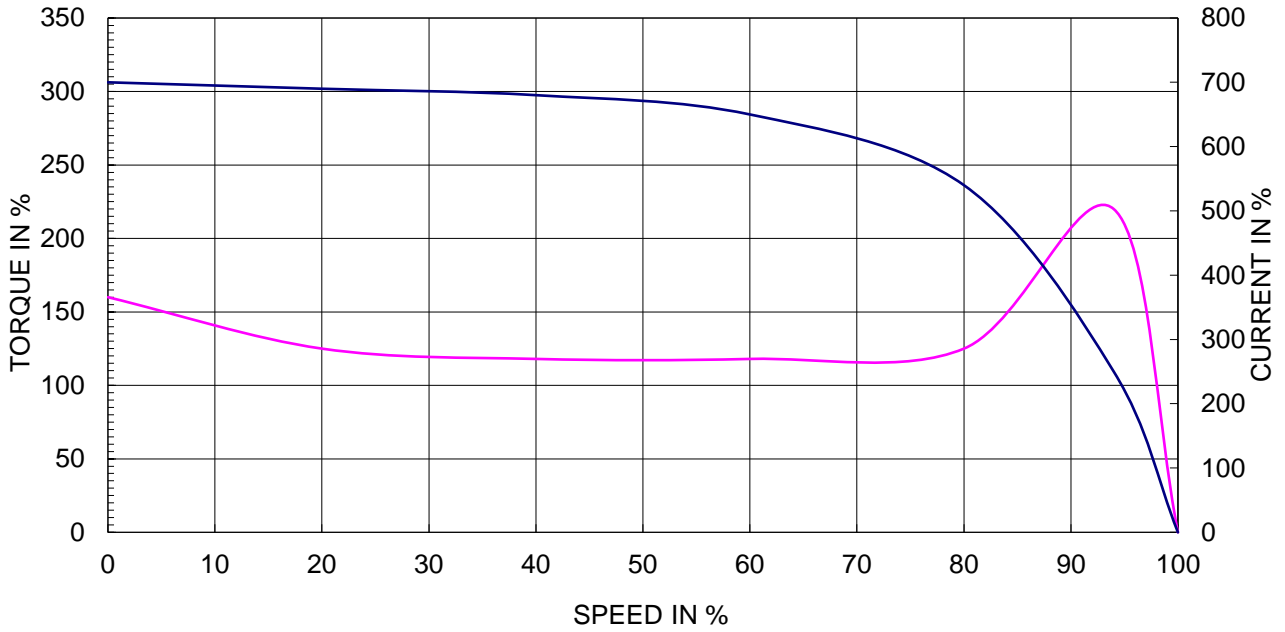
CURVE NO.

P-TNBJ8L04160

TYPE :		
RATED TORQUE :	88.0	Kg.m
GD2 OF MOTOR :	12.0	Kg.m ²
(ALLOWABLE) GD2 OF LOA	389.0	Kg.m ²

160 kW	4 P	60 Hz	
RATED SPEED :		1770 RPM	
VOLTAGE	440V	380 V	220V
RATED CURRENT	250.9A	290.5 A	501.8A

SPEED VS TORQUE & CURRENT CURVE



OUTPUT VS EFF., P.F & CURRENT CURVE

