




## DATA SHEET of AC INDUCTION MOTOR

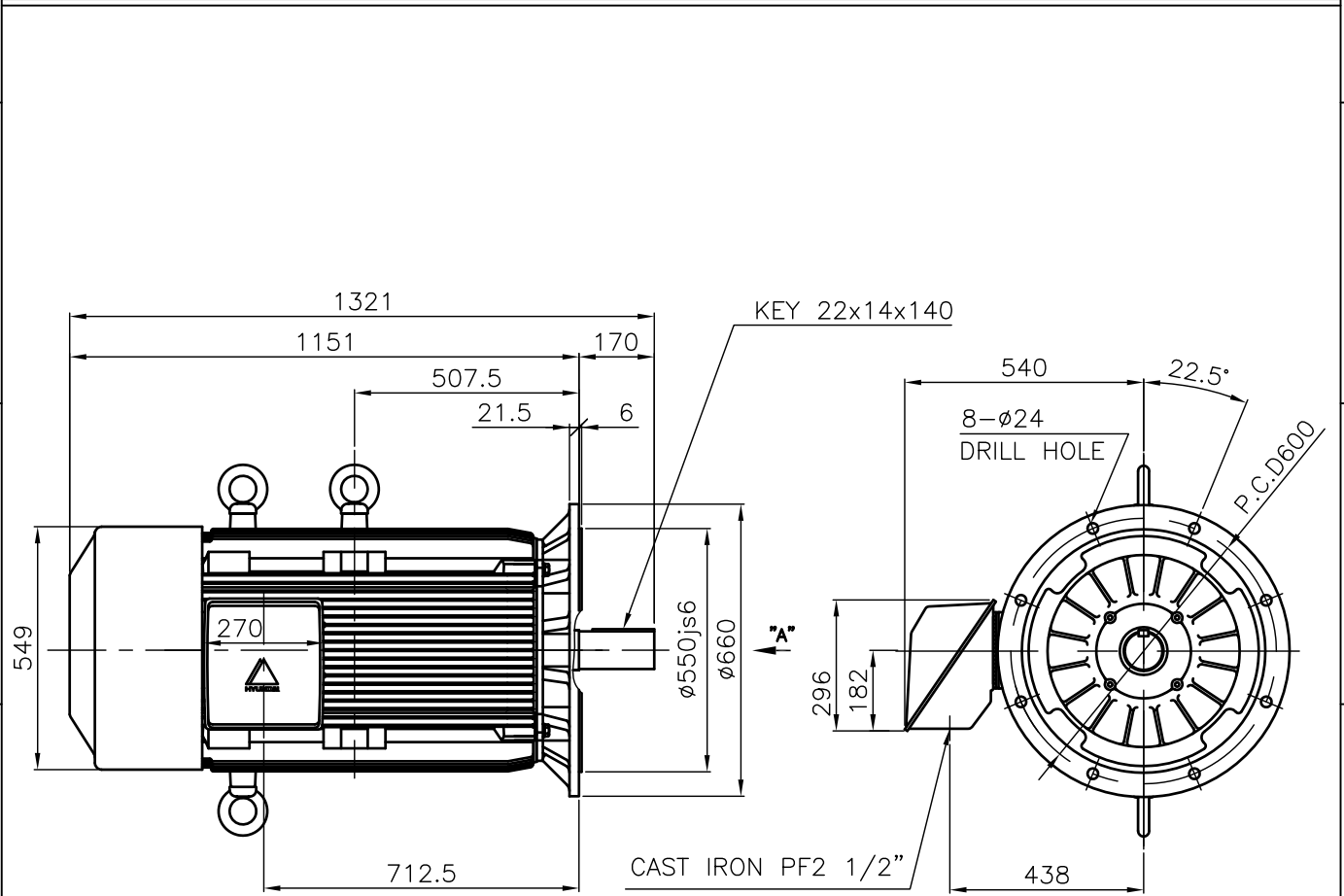
**150 HP - 8 P  
TE**

DESIGN NO : **KS C4202-1996**

본 도면은 현대중공업(주) 재산이므로  
허가없이 복사할 수 없음 (취급유의)

THIS DRAWING IS PROPRIETARY TO HHI. NO PART OF THIS DRAWING  
MAYBE REPRODUCED WITHOUT THE PERMISSION OF HHI.

|  |  |  |  |   |  |   |  |
|--|--|--|--|---|--|---|--|
| 1  |  | 2  |  | 3 |  | 4   |  |
|  <b>HYUNDAI</b><br>HEAVY INDUSTRIES CO., LTD. |  | <h1>TEFC</h1> <h2>THREE PHASE INDUCTION MOTOR</h2> |  |   |  | <b>TYPE</b><br>(1) TNB , TDB<br>CAST IRON FRAME |  |

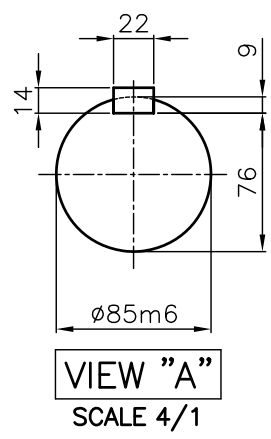



**NOTE**

1.TOLERANCE :

|                 |         |                  |
|-----------------|---------|------------------|
| RABBET DIAMETER | ø550js6 | ±0.022           |
| SHAFT DIAMETER  | ø85m6   | +0.035<br>+0.013 |
| KEYWAY WIDTH    | 22P9    | -0.022<br>-0.074 |
| KEYWAY DEPTH    | 9       | +0.2<br>0        |

2.The type (1)-"TNB , TDB" is for HHI's standard products and it can be changed for customer's requirements or detail designing.



|  |  |  |  |   |           |                 |    |
|--|--|--|--|---|-----------|-----------------|----|
| APPD BY KANG K.J. UNIT MM  |  |  |  | SUBJECT KS Fr.280LL TEFC                      |           | TEFC STANDARD   |    |
| CHKD BY KIM O.J. SCALE 1/17  |  |  |  | TITLE   |           | CAD PROJ \ FILE |    |
| CHKD BY LEE N.D. PROJEC'N 3rd Angle  |  |  |  | <b>OUTLINE</b><br>THREE-PHASE INDUCTION MOTOR |           |                 |    |
| DSND BY KIM RYANG GYU DATE 2007.03.23  |  |  |  |   |           |                 |    |
|  <b>HYUNDAI</b><br>HEAVY INDUSTRIES CO., LTD.<br>INDUSTRIAL & POWER SYSTEMS |  |  |  | REF. NO                                       | L3-Series | Sheet No.       | of |
|  |  |  |  | DWG NO  | TJ8XBP51  | Revision No.    | 0  |



# HYUNDAI

HEAVY INDUSTRIES CO., LTD

## PERFORMANCE CURVE

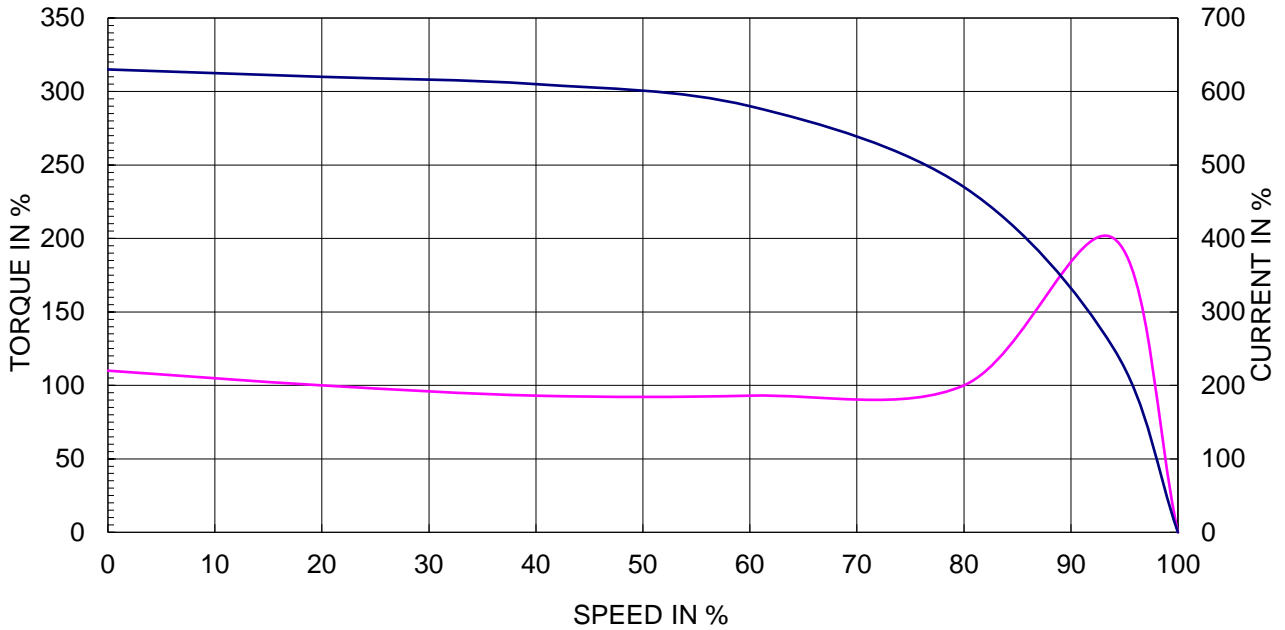
CURVE NO.

**P-TNBJ8X08110**

|                        |       |                   |
|------------------------|-------|-------------------|
| TYPE :                 |       |                   |
| RATED TORQUE :         | 121.8 | Kg.m              |
| GD2 OF MOTOR :         | 20.9  | Kg.m <sup>2</sup> |
| (ALLOWABLE) GD2 OF LOA | 897.0 | Kg.m <sup>2</sup> |

|               |        |         |        |
|---------------|--------|---------|--------|
| 110 kW        | 8 P    | 60 Hz   |        |
| RATED SPEED : |        | 880 RPM |        |
| VOLTAGE       | 440V   | 380 V   | 220V   |
| RATED CURRENT | 184.2A | 213.2 A | 368.3A |

### SPEED VS TORQUE & CURRENT CURVE



### OUTPUT VS EFF., P.F & CURRENT CURVE

