

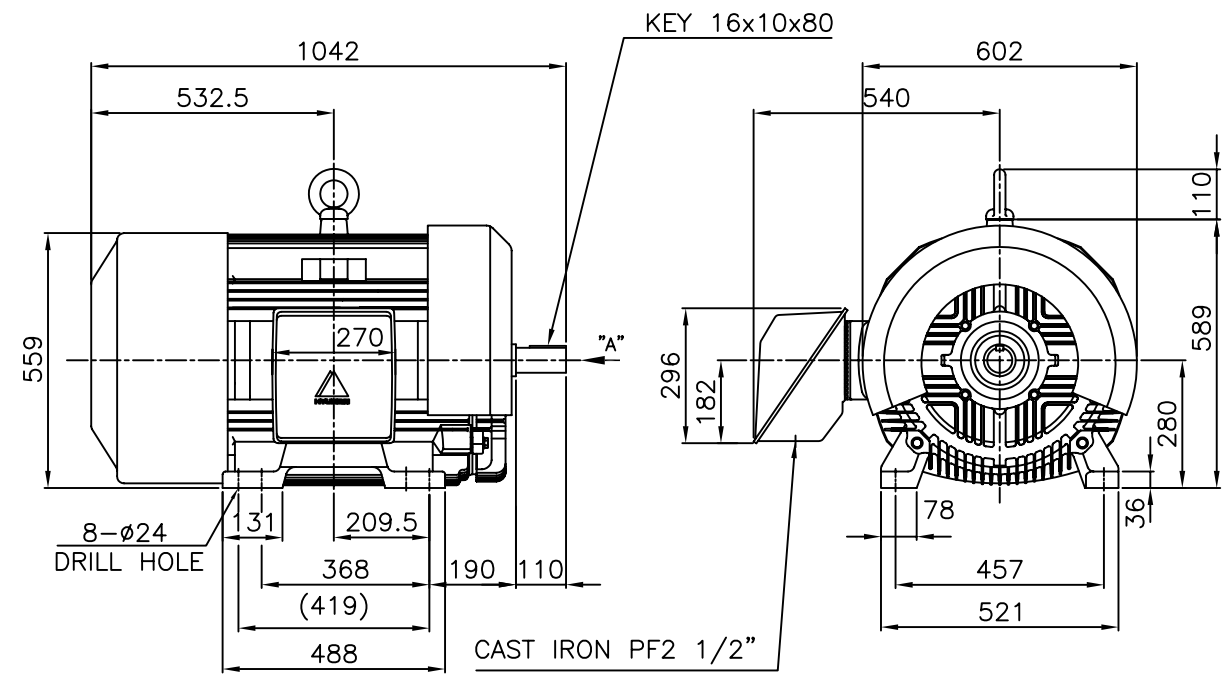


## DATA SHEET of AC INDUCTION MOTOR

**150 HP - 2 P  
TE**

DESIGN NO : **KS C4202-1996**

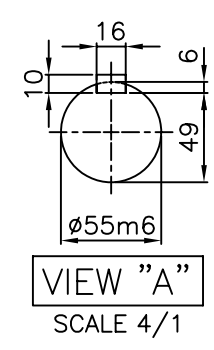
		<h1>TEFC</h1>		<b>TYPE</b> (1) TNB , TDB CAST IRON FRAME
		<b>THREE PHASE INDUCTION MOTOR</b>		



**NOTE**

1.TOLERANCE :

CENTER HEIGHT	280	$\begin{matrix} 0 \\ -1.0 \end{matrix}$
BASE HOLE	$\phi 24$	$\begin{matrix} +0.43 \\ 0 \end{matrix}$
SHAFT DIAMETER	$\phi 55$	$\begin{matrix} +0.030 \\ +0.011 \end{matrix}$
KEYWAY WIDTH	16	$\begin{matrix} -0.018 \\ -0.061 \end{matrix}$
KEYWAY DEPTH	6	$\begin{matrix} +0.2 \\ 0 \end{matrix}$
KEY WIDTH	16	$\begin{matrix} 0 \\ -0.043 \end{matrix}$
KEY HEIGHT	10	$\begin{matrix} 0 \\ -0.090 \end{matrix}$



2.The type (1)-"TNB , TDB" is for HHI's standard products and it can be changed for customer's requirements or detail designing.

				TEFC STANDARD		
APPD BY	KANG K.J.	UNIT	MM	SUBJECT	KS Fr.280S TEFC	
CHKD BY	KIM O.J.	SCALE	1/17			CAD PROJ \ FILE
CHKD BY	LEE N.D.	PROJEC'N	3rd Angle	<b>OUTLINE</b> THREE-PHASE INDUCTION MOTOR		
DSND BY	KIM RYANG GYU	DATE	2007.03.23			
				REF. NO	L2-Series	Sheet No. of
				DWG NO	TJ8SAC50	Revision No. 0



# HYUNDAI

HEAVY INDUSTRIES CO., LTD

## PERFORMANCE CURVE

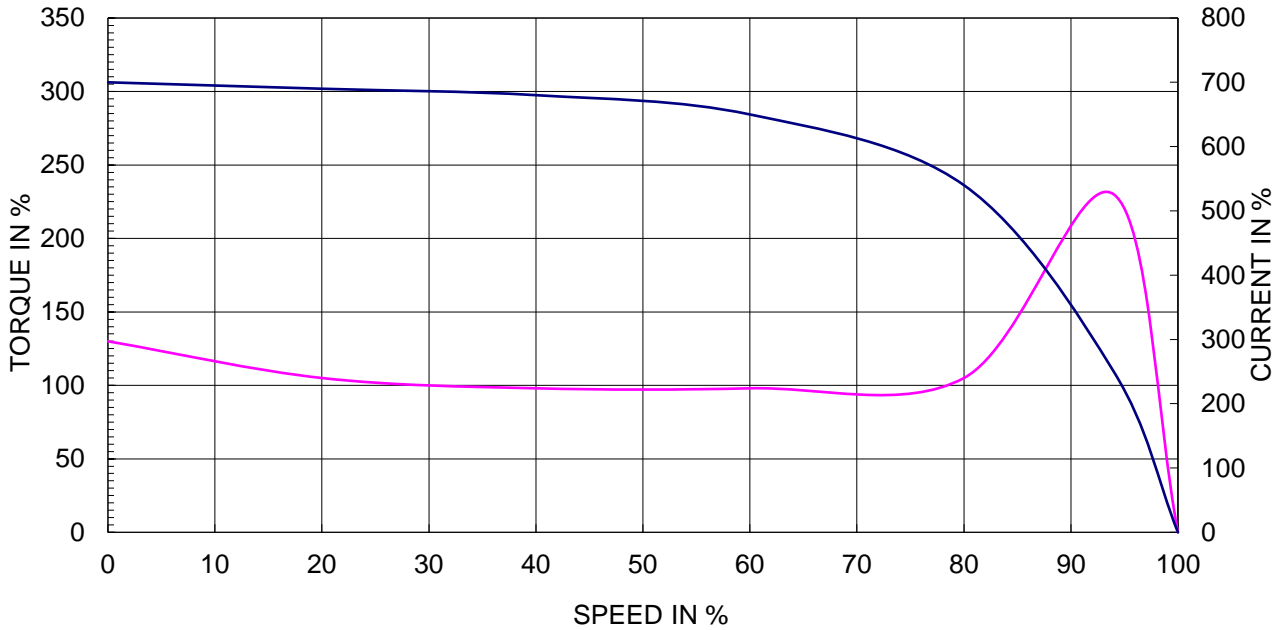
CURVE NO.

**P-TNBJ8S02110**

TYPE :		
RATED TORQUE :	30.0	Kg.m
GD2 OF MOTOR :	5.2	Kg.m <sup>2</sup>
(ALLOWABLE) GD2 OF LOA	43.0	Kg.m <sup>2</sup>

110 kW	2 P	60 Hz	
RATED SPEED :		3570 RPM	
VOLTAGE	440V	380 V	220V
RATED CURRENT	172.4A	199.6 A	344.8A

### SPEED VS TORQUE & CURRENT CURVE



### OUTPUT VS EFF., P.F & CURRENT CURVE

