

Customer :  
Project Name :  
Project No. :  
Revision No. :

---

# SPECIFICATION for INDUCTION MOTOR



## Contents

- |                                      |           |
|--------------------------------------|-----------|
| 1 . Data Sheet of AC Induction Motor | - 1Sheets |
| 2 . Speed-Torque & Current Curve     | - 1Sheets |
| 3 . Outline Dimension Drawing        | - 1Sheets |
| 4 . Main Terminal Box Drawing        | - 1Sheets |

# AC INDUCTION MOTOR DATA SHEET

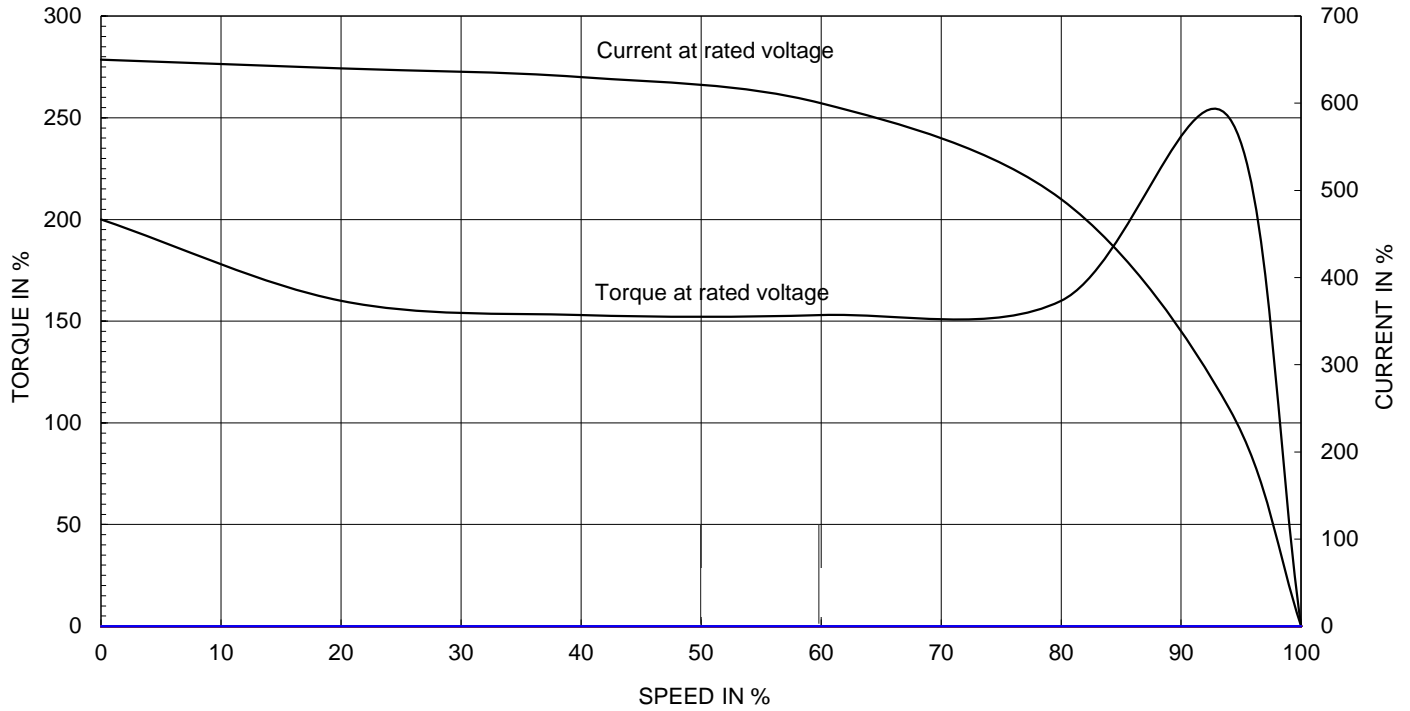
Model No.or RFQ No.		4406KSTD40SSDS1STFE3V11DL0SDS		Item No.		Rev. No.	[      ]	
Project Name				Project No.		Quantity		
<b>GENERAL SPECIFICATION</b>				<b>PERFORMANCE DATA</b>				
Frame Size	132S			Rated Output	5.5 kW		8 HP	
Type	HKP-5.5/4			Number of Poles	4			
Enclosure(Protection)	Totally Enclosed ( IP55 )			Rotor Type	Squirrel Cage			
Method of Cooling	IC411(FC)			Starting Method*	<input checked="" type="checkbox"/> D.O.L		<input type="checkbox"/> Y-Δ	
Rated Frequency	60 Hz			Rated Voltage	440 V			
Number of Phases	3			Current	Full Load	10.0 A		
Insulation Class	<input checked="" type="checkbox"/> F <input type="checkbox"/> B <input type="checkbox"/> H				Locked-rotor**	950 %		
Temp. Rise at full load (by resistance method)				Efficiency				
at 1.0 S.F		80 deg. C		50% Load		90.1 %		
Motor Location	<input checked="" type="checkbox"/> Indoor <input type="checkbox"/> Outdoor			75% Load		91.5 %		
Altitude	Less than 1000			100% Load		91.7 %		
Relative Humidity	Less than 80 %			Power Factor(p.u)				
Ambient Temp.	40 deg. C (Max.)			50% Load		0.630		
Duty Type	Continuous(S1)			75% Load		0.740		
Service Factor	1.15			100% Load		0.790		
Mounting	<input type="checkbox"/> B3 <input type="checkbox"/> B5 <input checked="" type="checkbox"/> V1 <input type="checkbox"/> B3/B5			Speed at Full Load		1760 r.p.m		
Bearing	Type	Anti-Friction			Torque			
	DE/N-DE	6208ZZC3 / 6208ZZC3			Full Load		3.0 kg·m	
	Lubricant	Grease(Polyrex-EM)			Locked-rotor**		190 %	
External Thrust	Not applicable			Breakdown**		250 %		
Coupling Method	<input checked="" type="checkbox"/> Direct <input type="checkbox"/> V-Belt			Moment of Inertia (J)				
Shaft Extension	<input checked="" type="checkbox"/> Single <input type="checkbox"/> Double			Load(Max.)		5.500 kg·m <sup>2</sup>		
Terminal Box	Main	<input type="checkbox"/> Steel <input checked="" type="checkbox"/> Cast Iron			Motor		0.024 kg·m <sup>2</sup>	
	Aux.	<input type="checkbox"/> Yes <input checked="" type="checkbox"/> No			Sound Pressure Level (No-load & mean value at 1m from motor)			
	Location	Refer to Outline Drawing			69 dB(A)			
Application				Vibration				
Area classification	Not applicable			Permissible number of consecutive starts		Cold	3 times	
Type of Ex-Protection	Non-Hazardous					Hot	2 times	
Applicable Standard	KS, IEC, NEMA MG1 Part30(Vpeak)			Paint	Munsell No.	4.4PB5.5/5.6(VL-451)		
<b>ACCESSORIES</b>				<b>SUBMITTAL DRAWING</b>				
				Outline Dimension Drawing		Motor Weight(Approx.)		
				V1		LM-T0131V1PL001	72 kg	
				Main T-Box Ass'y		3M-148549		
<b>REMARK</b>								
				*.Premium Efficiency(IE3)				
				*.For use on PWM VFD 10:1VT,3:1CT@1.0S.F&F Temp.rise				
<b>SPARE PARTS</b>								
				Date	DSND	CHKD	CHKD	APPD
				2018-04-25	R.G. KIM	-	O.J. KIM	S.K. HAN

Note: Others not mentioned in this data sheet shall be in accordance with maker standard.  
 Above technical data are only design values and shall be guaranteed with tolerance of applicable standard.  
 Inspection and performance test shall be maker standard, if not mentioned.  
 \* In case of Inverter-Fed Motor, performance data is based on sine wave tests.  
 \*\* The data are based on rated voltage & frequency, and data are expressed as a percentage of full load value.

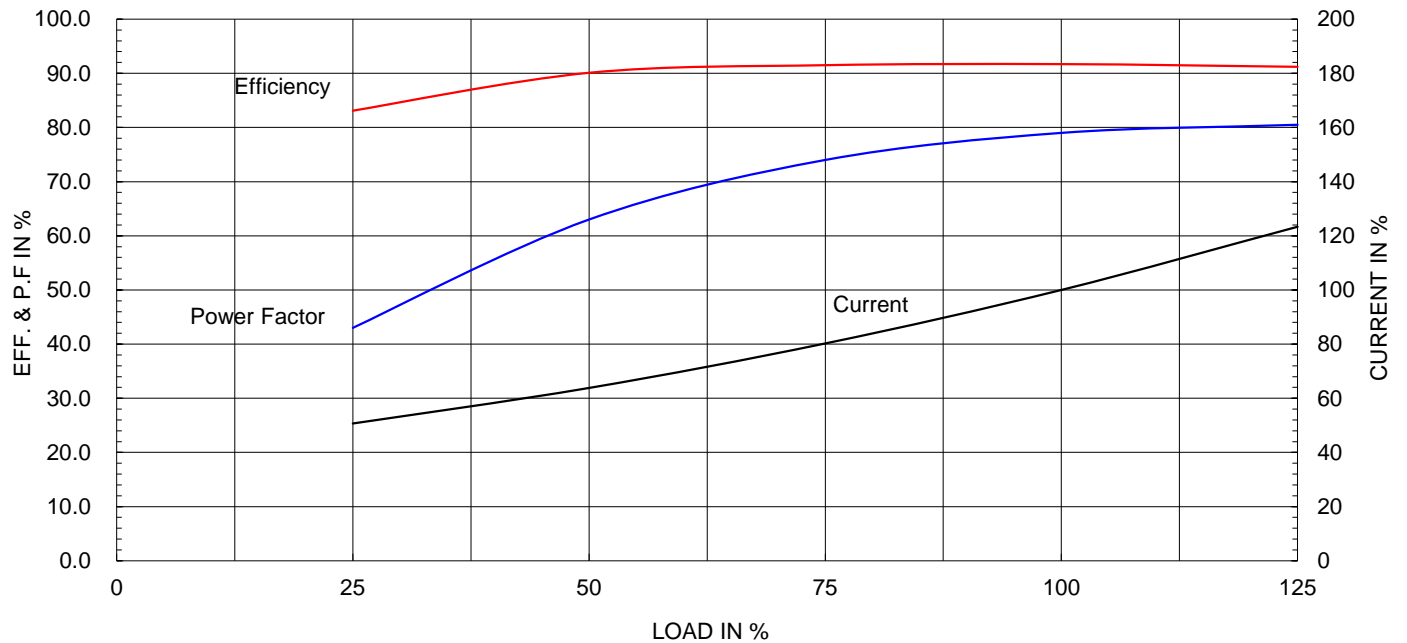
Type :	HKP-5.5/4	
Full Load Torque :	3.0	kg.m
Motor moment of Inertia (J) :	0.024	kg.m <sup>2</sup>
Load moment of Inertia (J) :	5.500	kg.m <sup>2</sup>

5.5 kW	4 P	60 Hz
Speed at Full Load :		1760 RPM
Rated Voltage	440V	
Full Load Current	10.0A	

SPEED VS TORQUE &amp; CURRENT CURVE



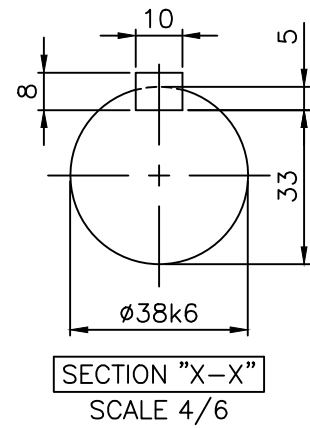
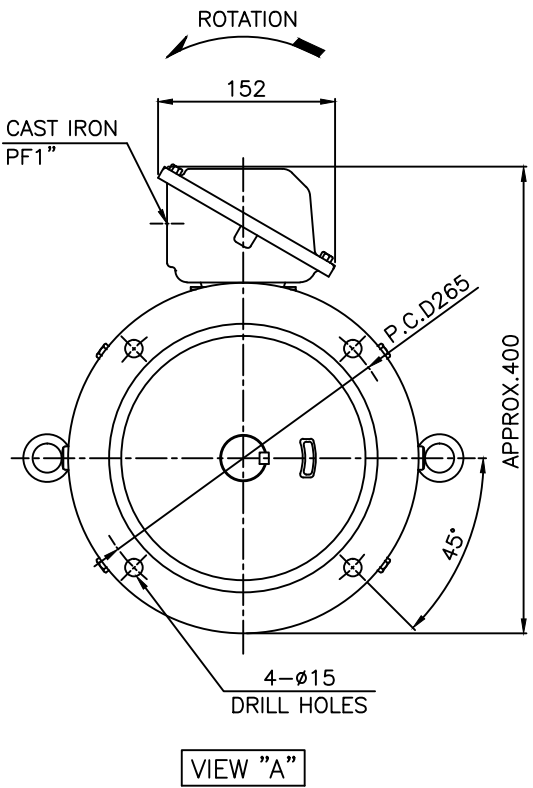
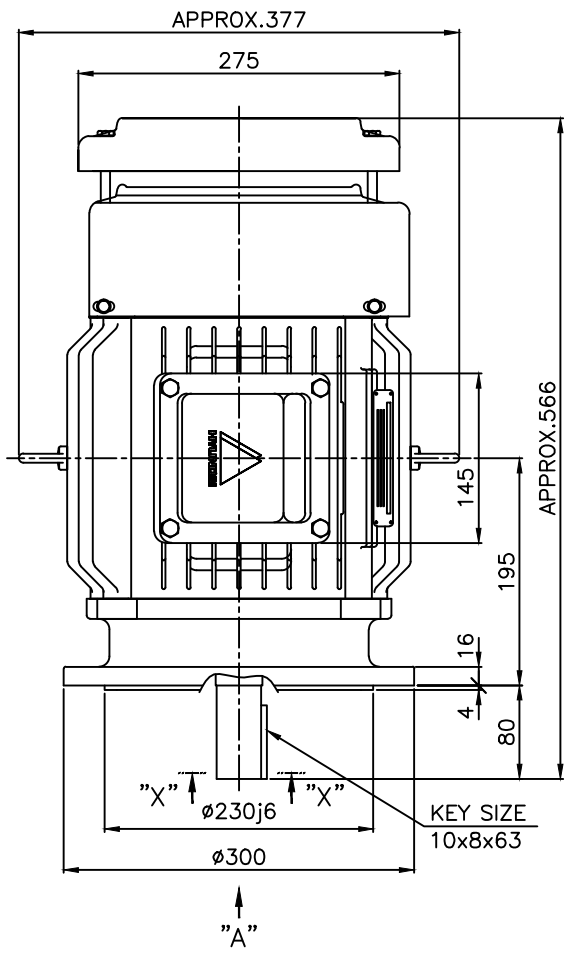
OUTPUT VS EFF., P.F &amp; CURRENT CURVE



본 도면은 현대일렉트릭(주) 재산이므로  
허가없이 복사할 수 없음 (취급주의)

THIS DRAWING IS PROPRIETARY TO HYUNDAI ELECTRIC. NO PART OF THIS DRAWING  
MAY BE REPRODUCED WITHOUT THE PERMISSION OF HYUNDAI ELECTRIC.

1	2	3	4					
▽	50S	REV	DATE	CONTENTS	REVD BY	CHKD BY	CHKD BY	APPD BY
▽▽	12.5S							
▽▽▽	3.2S							
▽▽▽▽	0.4S							



NOTE

1. TOLERANCE :

FLANGE HOLES	Ø15	$\begin{matrix} +0.43 \\ 0 \end{matrix}$
RABBET DIAMETER	Ø230	$\begin{matrix} +0.016 \\ -0.013 \end{matrix}$
SHAFT DIAMETER	Ø38	$\begin{matrix} +0.018 \\ +0.002 \end{matrix}$
KEYWAY WIDTH	10	$\begin{matrix} 0 \\ -0.036 \end{matrix}$
KEYWAY DEPTH	5	$\begin{matrix} +0.2 \\ 0 \end{matrix}$
KEY WIDTH	10	$\begin{matrix} 0 \\ -0.036 \end{matrix}$
KEY HEIGHT	8	$\begin{matrix} 0 \\ -0.090 \end{matrix}$

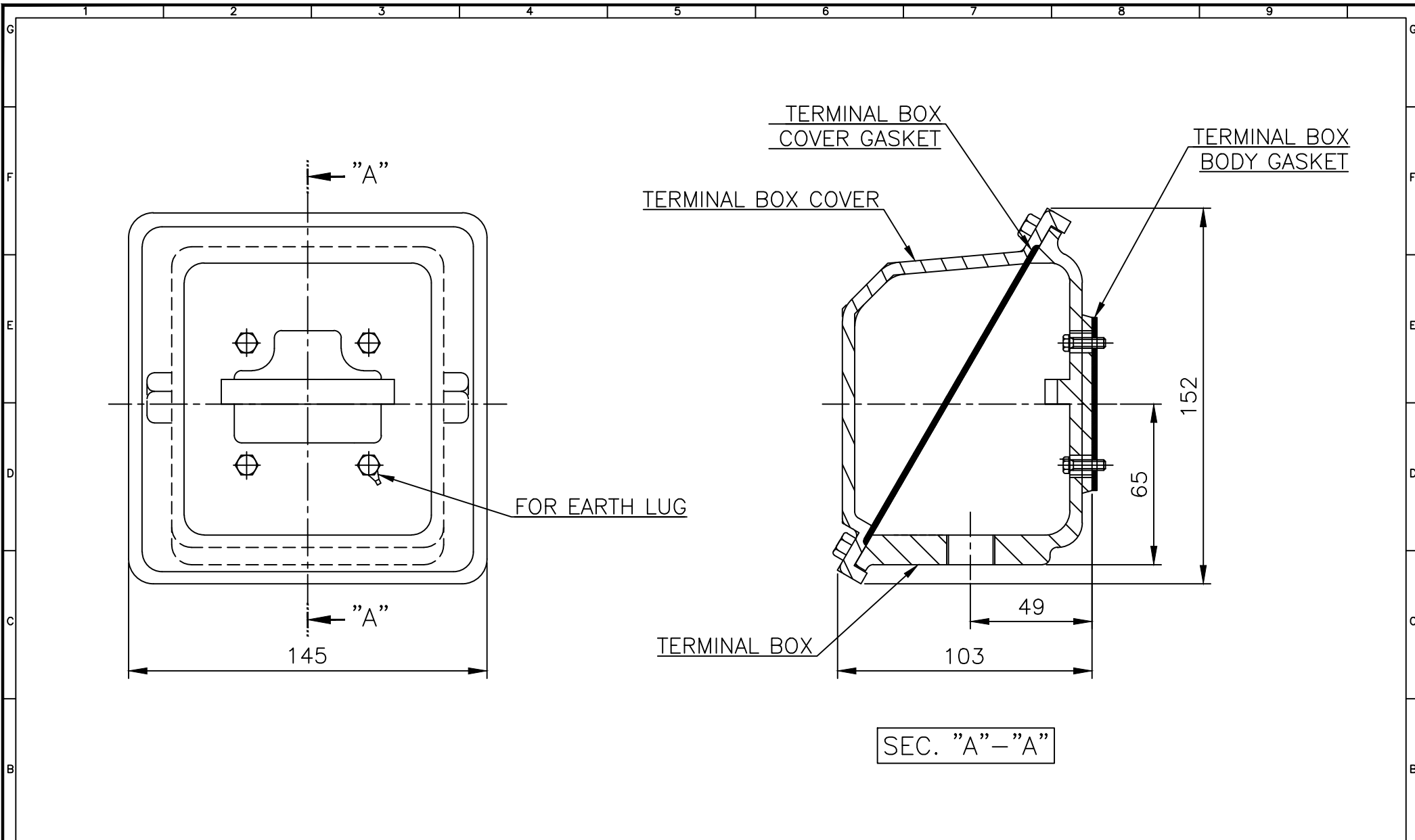
APPD BY	S.K.HAN	UNIT	mm	SUBJECT	KS, IEC Fr.132S(IE3, HK TYPE)	DWG SIZE	A4 ( 16 )
CHKD BY	S.Y.KIM	SCALE	1/6	TITLE OUTLINE			
CHKD BY	R.G.KIM	PROJEC'N	3각법(3rd Angle)				
DSND BY	S.H.YUN	DATE	2018-09-19	REF. NO		Sheet No.	of
				DWG NO	LM-T0131V1PL001	Revision No.	0



HYUNDAI ELECTRIC

본 도면은 현대일렉트릭(주) 재산이므로 허가없이 복사할 수 없습니다 (취급주의)

THIS DRAWING IS PROPRIETARY TO HYUNDAI ELECTRIC. NO PART OF THIS DRAWING MAY BE REPRODUCED WITHOUT THE PERMISSION OF HYUNDAI ELECTRIC.



▽	50S
▽▽	12.5S
▽▽▽	3.2S
▽▽▽▽	0.4S

REV	DATE	CONTENTS	REVD BY	CHKD BY	CHKD BY	APPD BY

Q'TY	DESCRIPTION	MATERIAL	DIMENSION	WEIGHT	PART NO.	REMARK	NO.
APPD BY	S.K.HAN	UNIT	mm	SUBJECT	FR.100~132 (CAST IRON)	DWG SIZE	A3 (1:2)
CHKD BY	S.Y.KIM	SCALE	1/2	TITLE	Terminal Box Arrangement		
CHKD BY	R.G.KIM	PROJEC'N	3각법 (3rd Angle)	DATE	2011-10-26		
DSND BY	H.K.LEE						
				REF. NO	227B8004CB	Sheet No.	of
				DWG NO	3M-148549	Revision No.	2

