

Customer :
Project Name :
Project No. :
Revision No. :

SPECIFICATION for INDUCTION MOTOR



Contents

- | | |
|--------------------------------------|-----------|
| 1 . Data Sheet of AC Induction Motor | - 1Sheets |
| 2 . Speed-Torque & Current Curve | - 1Sheets |
| 3 . Outline Dimension Drawing | - 1Sheets |
| 4 . Main Terminal Box Drawing | - 1Sheets |



AC INDUCTION MOTOR DATA SHEET

Model No.or RFQ No.	2206KSTD40SSDS1STFE3B31DL0SDS	Item No.		Rev. No.	[]
Project Name		Project No.		Quantity	

GENERAL SPECIFICATION		PERFORMANCE DATA	
Frame Size	132S	Rated Output	5.5 kW 8 HP
Type	HKP-5.5/2	Number of Poles	2
Enclosure(Protection)	Totally Enclosed (IP55)	Rotor Type	Squirrel Cage
Method of Cooling	IC411(FC)	Starting Method*	<input checked="" type="checkbox"/> D.O.L <input type="checkbox"/> Y-Δ
Rated Frequency	60 Hz	Rated Voltage	220 V
Number of Phases	3	Current	Full Load 18.8 A Locked-rotor** 700 %
Insulation Class	<input checked="" type="checkbox"/> F <input type="checkbox"/> B <input type="checkbox"/> H	Efficiency	50% Load 86.6 % 75% Load 88.9 % 100% Load 89.5 %
Temp. Rise at full load (by resistance method) at 1.0 S.F	80 deg. C	Power Factor(p.u)	50% Load 0.780 75% Load 0.835 100% Load 0.860
Motor Location	<input checked="" type="checkbox"/> Indoor <input type="checkbox"/> Outdoor	Speed at Full Load	3520 r.p.m
Altitude	Less than 1000	Torque	Full Load 1.5 kg·m Locked-rotor** 160 % Breakdown** 260 %
Relative Humidity	Less than 80 %	Moment of Inertia (J)	Load(Max.) 1.250 kg·m ² Motor 0.014 kg·m ²
Ambient Temp.	40 deg. C (Max.)	Sound Pressure Level (No-load & mean value at 1m from motor)	76 dB(A)
Duty Type	Continuous(S1)	Vibration	1.6 mm/sec (r.m.s)
Service Factor	1.15	Permissible number of consecutive starts	Cold 3 times Hot 2 times
Mounting	<input checked="" type="checkbox"/> B3 <input type="checkbox"/> B5 <input type="checkbox"/> V1 <input type="checkbox"/> B3/B5	Paint	Munsell No. 4.4PB5.5/5.6(VL-451)
Bearing	Type Anti-Friction DE/N-DE 6208ZZC3 / 6208ZZC3 Lubricant Grease(Polyrex-EM)		
External Thrust	Not applicable		
Coupling Method	<input checked="" type="checkbox"/> Direct <input type="checkbox"/> V-Belt		
Shaft Extension	<input checked="" type="checkbox"/> Single <input type="checkbox"/> Double		
Terminal Box	Main <input type="checkbox"/> Steel <input checked="" type="checkbox"/> Cast Iron		
	Aux. <input type="checkbox"/> Yes <input checked="" type="checkbox"/> No		
Location	Refer to Outline Drawing		
Application			
Area classification	Not applicable		
Type of Ex-Protection	Non-Hazardous		
Applicable Standard	KS, IEC, NEMA MG1 Part30(Vpeak)		

ACCESSORIES	SUBMITTAL DRAWING
	Outline Dimension Drawing \ Motor Weight(Approx.) B3 LM-T0131B3PL001 68 kg Main T-Box Ass'y 3M-148549

REMARK				
*.Premium Efficiency(IE3)				
*.For use on PWM VFD 10:1VT,3:1CT@1.0S.F&F Temp.rise				

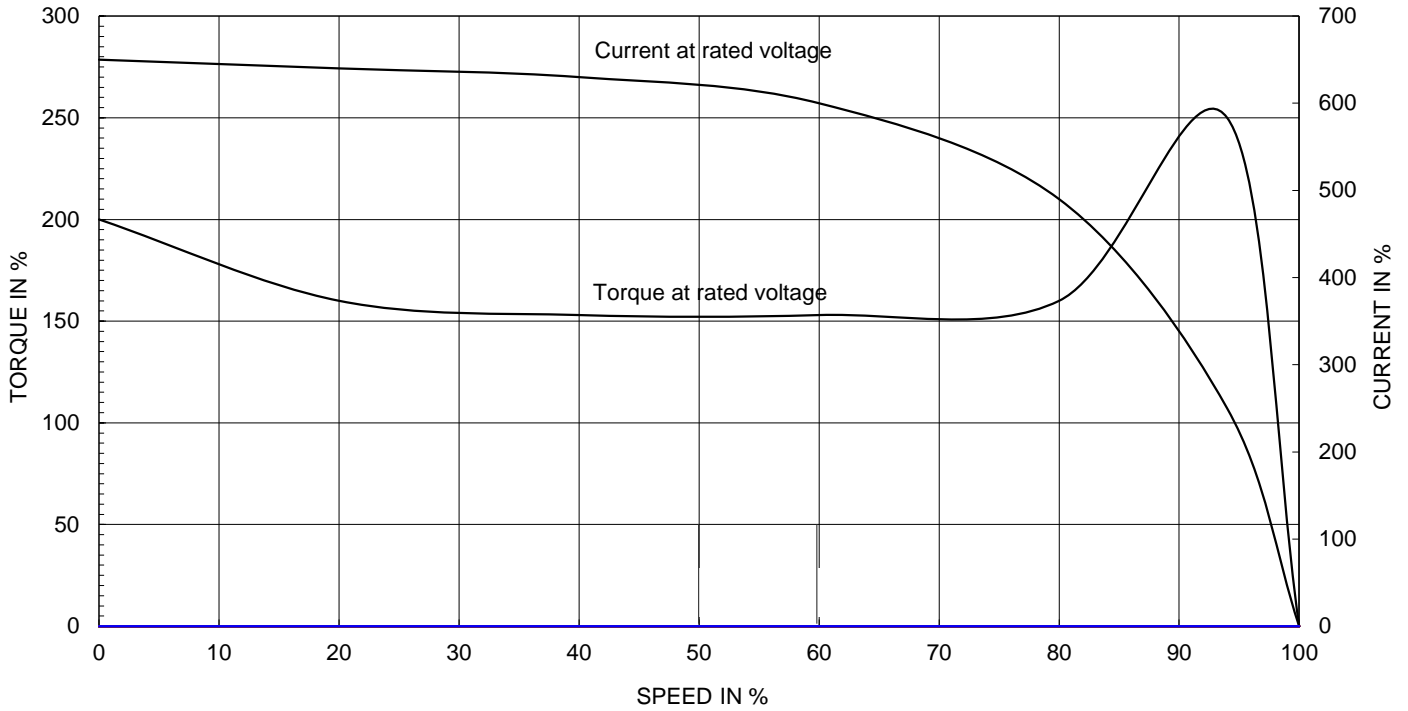
SPARE PARTS				
Date	DSND	CHKD	CHKD	APPD
2018-04-25	R.G. KIM	-	O.J. KIM	S.K. HAN

Note: Others not mentioned in this data sheet shall be in accordance with maker standard.
 Above technical data are only design values and shall be guaranteed with tolerance of applicable standard.
 Inspection and performance test shall be maker standard, if not mentioned.
 * In case of Inverter-Fed Motor, performance data is based on sine wave tests.
 ** The data are based on rated voltage & frequency, and data are expressed as a percentage of full load value.

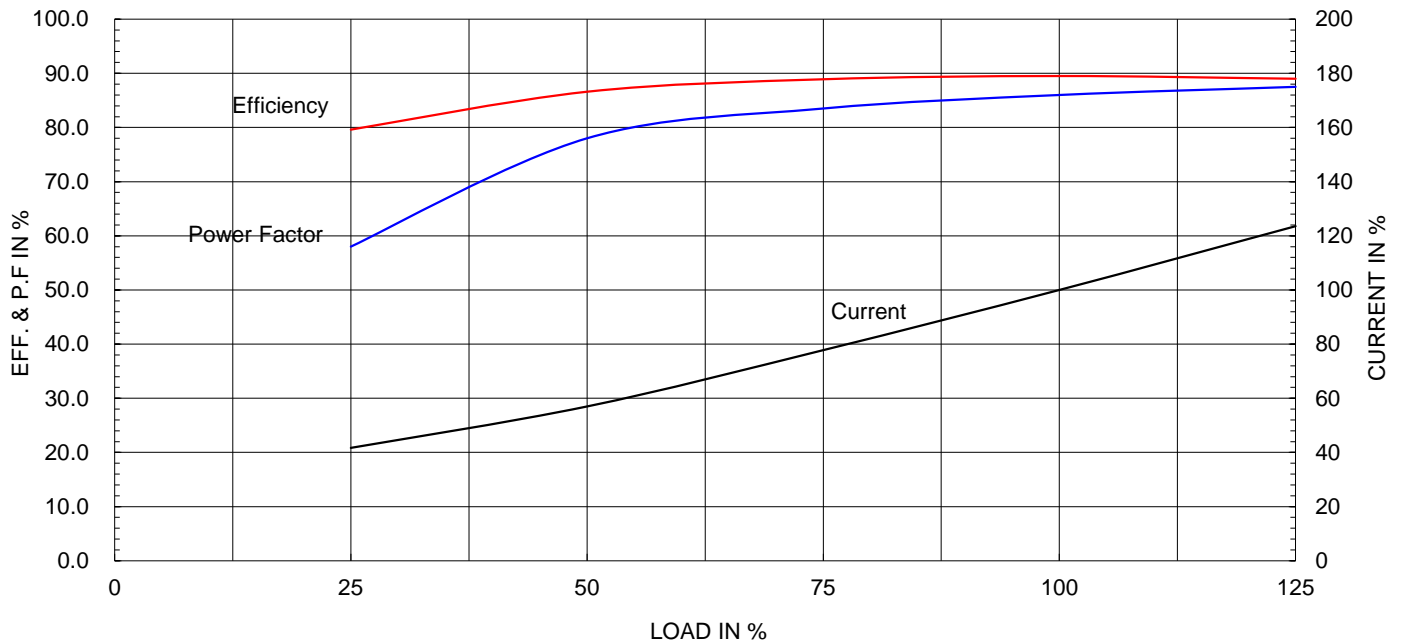
Type :	HKP-5.5/2	
Full Load Torque :	1.5	kg.m
Motor moment of Inertia (J) :	0.014	kg.m ²
Load moment of Inertia (J) :	1.250	kg.m ²

5.5 kW	2 P	60 Hz
Speed at Full Load :		3520 RPM
Rated Voltage	220V	
Full Load Current	18.8A	

SPEED VS TORQUE & CURRENT CURVE



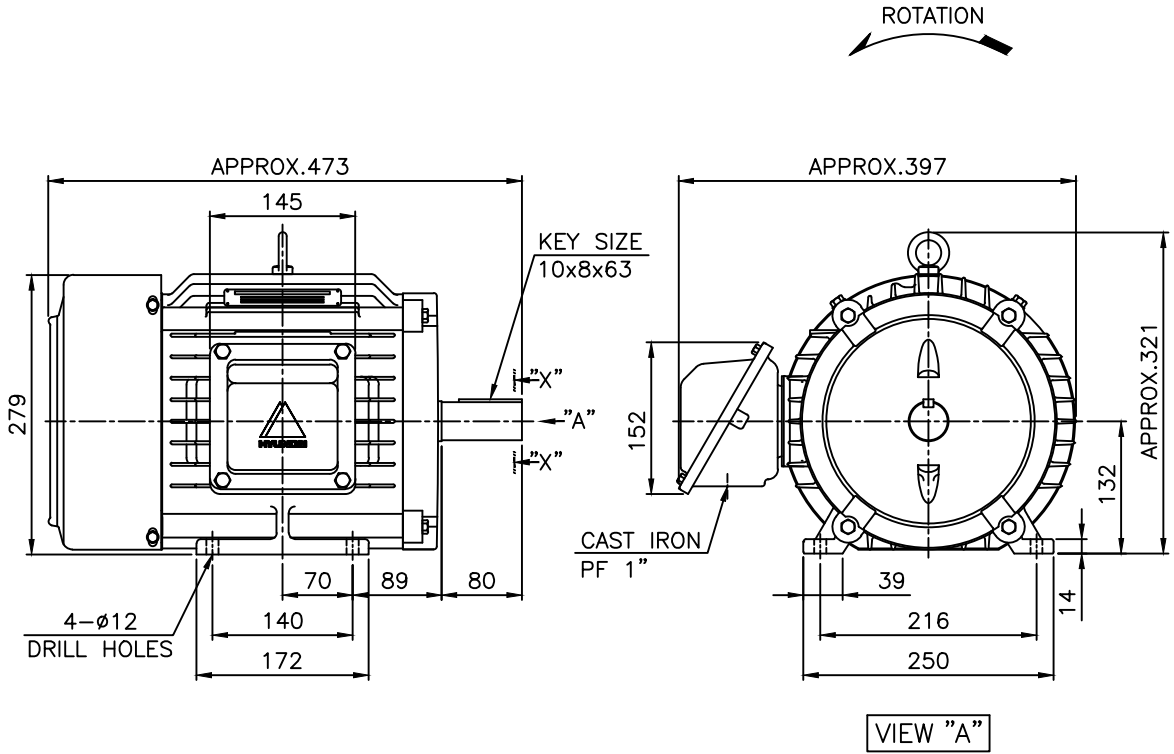
OUTPUT VS EFF., P.F & CURRENT CURVE



본 도면은 현대일렉트릭(주) 재산이므로
허가없이 복사할 수 없음 (취급주의)

THIS DRAWING IS PROPRIETARY TO HYUNDAI ELECTRIC. NO PART OF THIS DRAWING
MAY BE REPRODUCED WITHOUT THE PERMISSION OF HYUNDAI ELECTRIC.

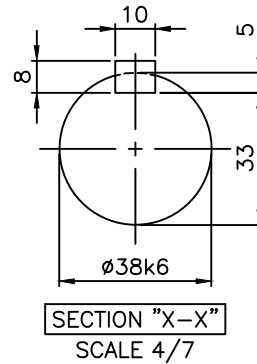
	1	2	3	4				
▽	50S	REV	DATE	CONTENTS	REVD BY	CHKD BY	CHKD BY	APPD BY
▽▽	12.5S							
▽▽▽	3.2S							
▽▽▽▽	0.4S							



NOTE

1.TOLERANCE :

CENTER HEIGHT	132	$\begin{matrix} 0 \\ -0.5 \end{matrix}$
BASE HOLES	$\phi 12$	$\begin{matrix} +0.43 \\ 0 \end{matrix}$
SHAFT DIAMETER	$\phi 38$	$\begin{matrix} +0.018 \\ +0.002 \end{matrix}$
KEYWAY WIDTH	10	$\begin{matrix} 0 \\ -0.036 \end{matrix}$
KEYWAY DEPTH	5	$\begin{matrix} +0.2 \\ 0 \end{matrix}$
KEY WIDTH	10	$\begin{matrix} 0 \\ -0.036 \end{matrix}$
KEY HEIGHT	8	$\begin{matrix} 0 \\ -0.090 \end{matrix}$



APPD BY	S.K.HAN	UNIT	mm	SUBJECT	KS, IEC Fr.132S(IE3, HK TYPE)	DWG SIZE	A4 (1:7)
CHKD BY	S.Y.KIM	SCALE	1/7	TITLE	OUTLINE		
CHKD BY	R.G.KIM	PROJEC'N	3각법 (3rd Angle)	REF. NO		Sheet No.	of
DSND BY	S.H.YUN	DATE	2018-09-18	DWG NO	LM-T0131B3PL001	Revision No.	0



SEC. "A" - "A"

▽	50S
▽▽	12.5S
▽▽▽	3.2S
▽▽▽▽	0.4S

REV	DATE	CONTENTS	REVD BY	CHKD BY	CHKD BY	APPD BY

Q'TY	DESCRIPTION	MATERIAL	DIMENSION	WEIGHT	PART NO.	REMARK	NO.
APPD BY	S.K.HAN	UNIT	mm	SUBJECT	FR.100~132 (CAST IRON)	DWG SIZE	A3 (1:2)
CHKD BY	S.Y.KIM	SCALE	1/2	TITLE			
CHKD BY	R.G.KIM	PROJEC'N	3각법 (3rd Angle)	Terminal Box Arrangement			
DSND BY	H.K.LEE	DATE	2011-10-26	REF. NO	227B8004CB	Sheet No.	of
				DWG NO	3M-148549	Revision No.	2

일반가공공차		일반기계공차	
1-4	±0.1	6-30	±0.5
4-18	±0.2	30-120	±0.8
18-63	±0.3	120-315	±1.2
63-250	±0.5	315-1000	±2.0
250-	±0.8	1000-	±3.0