

Customer :
Project Name :
Project No. :
Revision No. :

SPECIFICATION for INDUCTION MOTOR



Contents

- | | |
|--------------------------------------|-----------|
| 1 . Data Sheet of AC Induction Motor | - 1Sheets |
| 2 . Speed-Torque & Current Curve | - 1Sheets |
| 3 . Outline Dimension Drawing | - 1Sheets |
| 4 . Main Terminal Box Drawing | - 1Sheets |



AC INDUCTION MOTOR DATA SHEET

Model No.or RFQ No.		3806KSTD40SSDS1STFE3B31DL0SD3		Item No.		Rev. No.	[]		
Project Name				Project No.		Quantity			
GENERAL SPECIFICATION				PERFORMANCE DATA					
Frame Size		180L		Rated Output		30 kW 40 HP			
Type		HLP-30/2		Number of Poles		2			
Enclosure(Protection)		Totally Enclosed (IP55)		Rotor Type		Squirrel Cage			
Method of Cooling		IC411(FC)		Starting Method*		<input checked="" type="checkbox"/> D.O.L <input type="checkbox"/> Y-Δ			
Rated Frequency		60 Hz		Rated Voltage		380 V			
Number of Phases		3		Current		Full Load 55.1 A			
Insulation Class		<input checked="" type="checkbox"/> F <input type="checkbox"/> B <input type="checkbox"/> H		Locked-rotor**		950 %			
Temp. Rise at full load (by resistance method)		at 1.0 S.F 80 deg. C		Efficiency					
Motor Location		<input checked="" type="checkbox"/> Indoor <input type="checkbox"/> Outdoor		50% Load		92.2 %			
Altitude		Less than 1000		75% Load		92.6 %			
Relative Humidity		Less than 80 %		100% Load		92.4 %			
Ambient Temp.		40 deg. C (Max.)		Power Factor(p.u)					
Duty Type		Continuous(S1)		50% Load		0.860			
Service Factor		1.15		75% Load		0.885			
Mounting		<input checked="" type="checkbox"/> B3 <input type="checkbox"/> B5 <input type="checkbox"/> V1 <input type="checkbox"/> B3/B5		100% Load		0.895			
Bearing		Type Anti-Friction		Speed at Full Load 3560 r.p.m					
		DE/N-DE 6212ZZC3 / 6310ZZC3		Torque					
		Lubricant Grease(Polyrex-EM)		Full Load		8.2 kg·m			
External Thrust		Not applicable		Locked-rotor**		160 %			
Coupling Method		<input checked="" type="checkbox"/> Direct <input type="checkbox"/> V-Belt		Breakdown**		230 %			
Shaft Extension		<input checked="" type="checkbox"/> Single <input type="checkbox"/> Double		Moment of Inertia (J)					
Terminal Box		Main <input type="checkbox"/> Steel <input checked="" type="checkbox"/> Cast Iron		Load(Max.)		3.000 kg·m ²			
		Aux. <input type="checkbox"/> Yes <input checked="" type="checkbox"/> No		Motor		0.088 kg·m ²			
Location		Refer to Outline Drawing		Sound Pressure Level (No-load & mean value at 1m from motor)					
Application				86 dB(A)					
Area classification		Not applicable		Vibration 2.2 mm/sec (r.m.s)					
Type of Ex-Protection		Non-Hazardous		Permissible number of consecutive starts		Cold 3 times			
Applicable Standard		KS, IEC, NEMA MG1 Part30(Vpeak)		Hot		2 times			
				Paint Munsell No.		4.4PB5.5/5.6(VL-451)			
ACCESSORIES				SUBMITTAL DRAWING					
				Outline Dimension Drawing		Motor Weight(Approx.)			
				B3		LM-T1185B3PL001		186 kg	
				Main T-Box Ass'y		3M-145860			
REMARK									
				*.Premium Efficiency(IE3)					
				*.For use on PWM VFD 10:1VT,3:1CT@1.0S.F&F Temp.rise					
SPARE PARTS									
				Date	DSND	CHKD	CHKD	APPD	
				2018-04-25	R.G. KIM	-	O.J. KIM	S.K. HAN	

Note: Others not mentioned in this data sheet shall be in accordance with maker standard.
 Above technical data are only design values and shall be guaranteed with tolerance of applicable standard.
 Inspection and performance test shall be maker standard, if not mentioned.
 * In case of Inverter-Fed Motor, performance data is based on sine wave tests.
 ** The data are based on rated voltage & frequency, and data are expressed as a percentage of full load value.

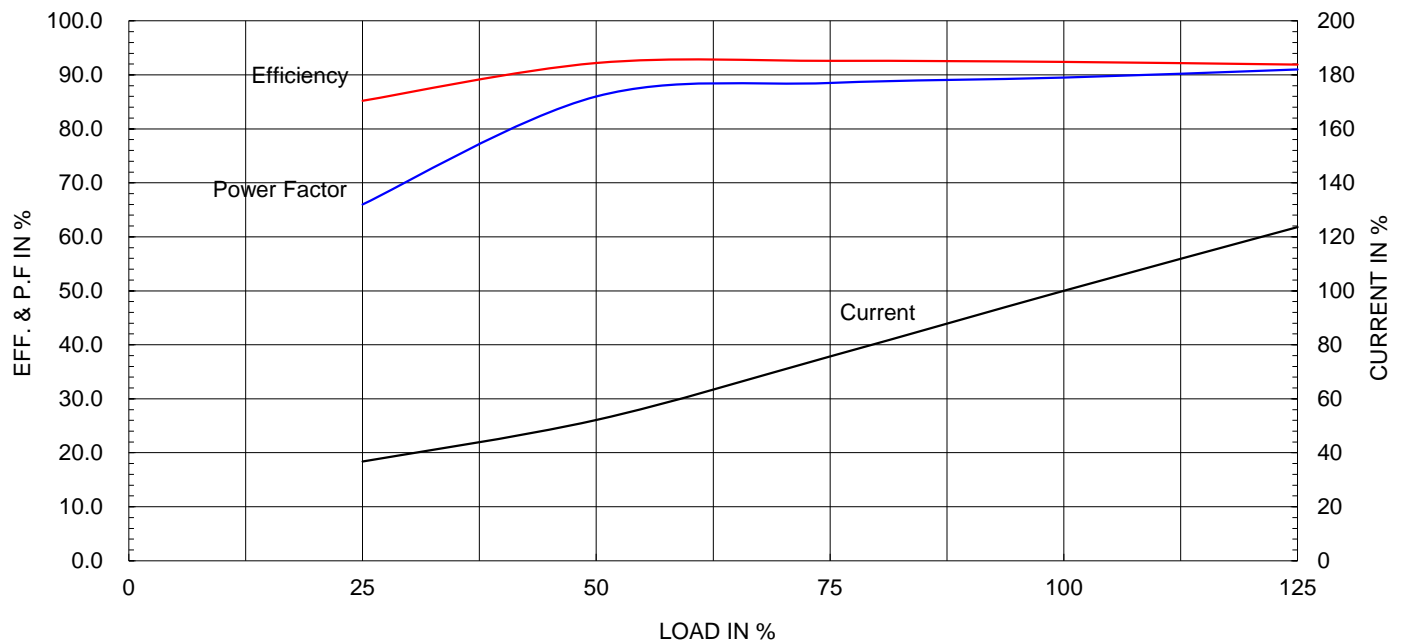
Type :	HLP-30/2	
Full Load Torque :	8.2	kg.m
Motor moment of Inertia (J) :	0.088	kg.m ²
Load moment of Inertia (J) :	3.000	kg.m ²

30 kW	2 P	60 Hz
Speed at Full Load :		3560 RPM
Rated Voltage	380V	
Full Load Current	55.1A	

SPEED VS TORQUE & CURRENT CURVE



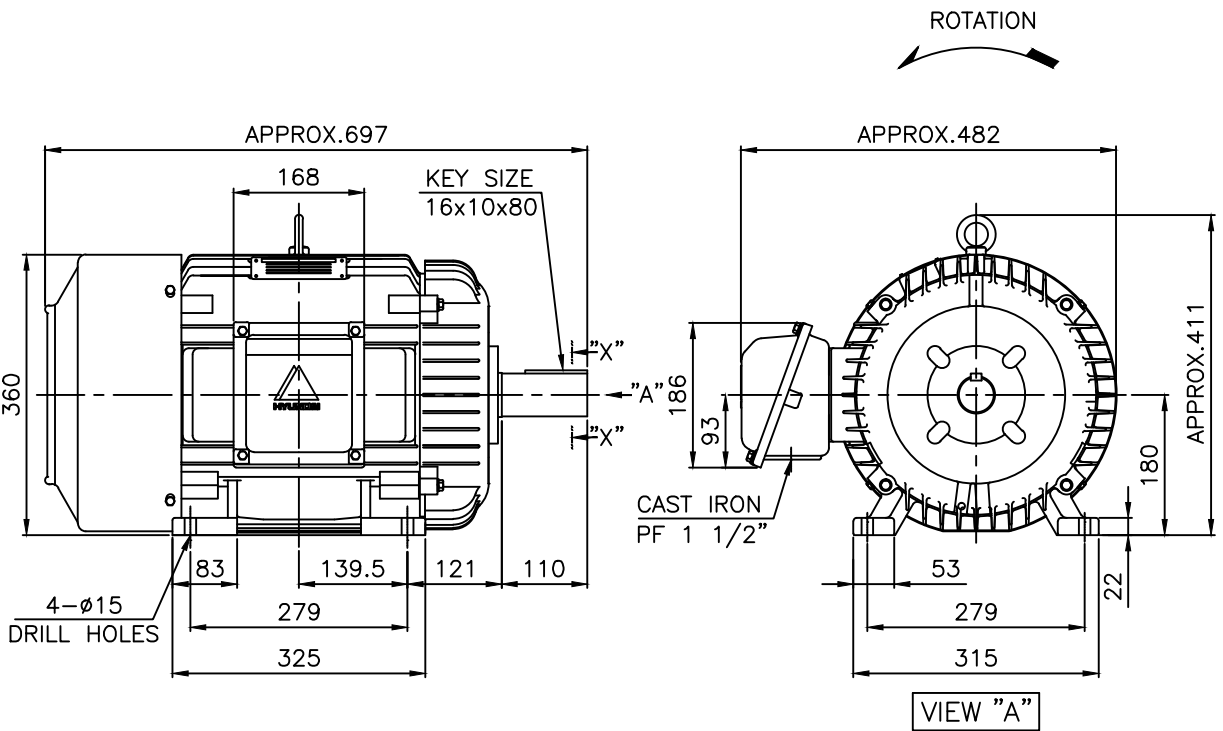
OUTPUT VS EFF., P.F & CURRENT CURVE



본 도면은 현대일렉트릭(주) 재산이므로
허가없이 복사할 수 없음 (취급주의)

THIS DRAWING IS PROPRIETARY TO HYUNDAI ELECTRIC. NO PART OF THIS DRAWING
MAY BE REPRODUCED WITHOUT THE PERMISSION OF HYUNDAI ELECTRIC.

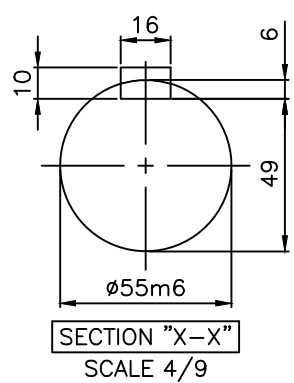
	1	2	3	4				
▽	50S	REV	DATE	CONTENTS	REVD BY	CHKD BY	CHKD BY	APPD BY
▽▽	12.5S							
▽▽▽	3.2S							
▽▽▽▽	0.4S							



NOTE

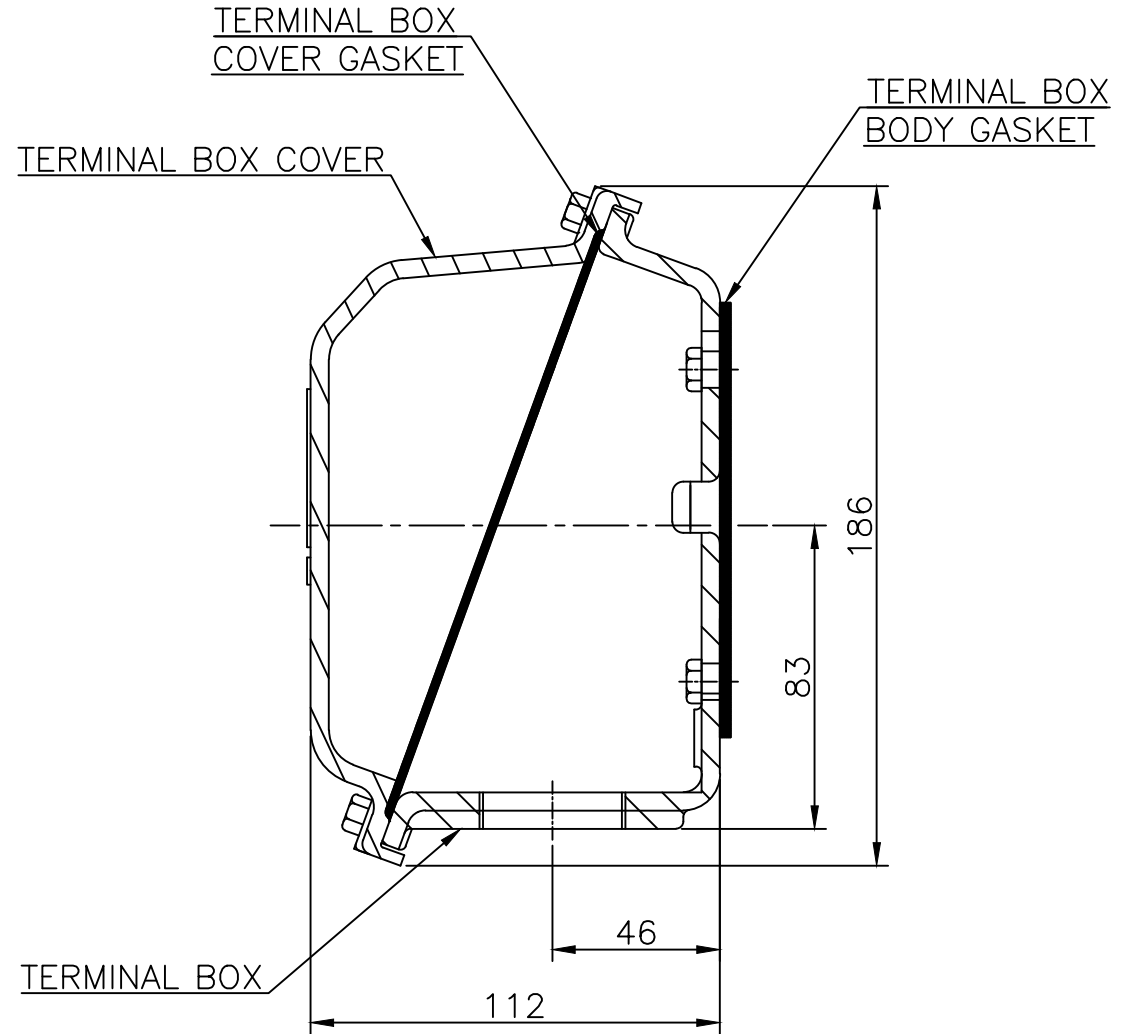
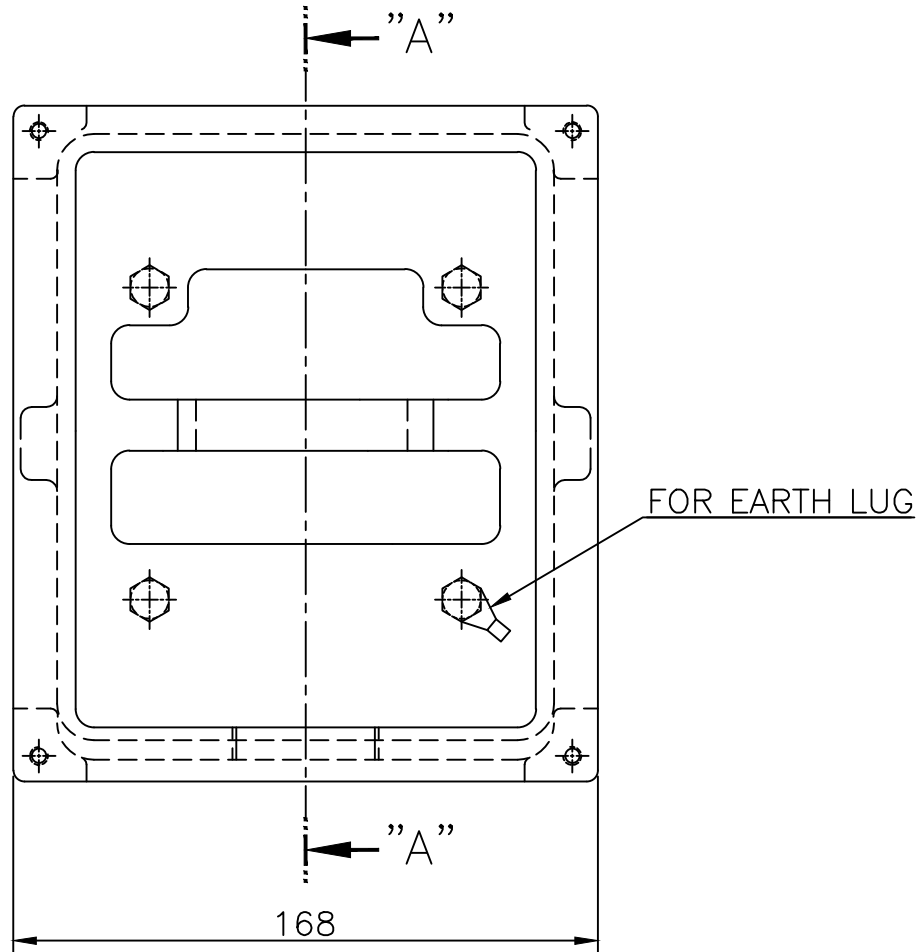
1. TOLERANCE :

CENTER HEIGHT	180	⁰ / _{-0.5}
BASE HOLES	ø15	^{+0.43} / ₀
SHAFT DIAMETER	ø55	^{+0.030} / _{+0.011}
KEYWAY WIDTH	16	⁰ / _{-0.043}
KEYWAY DEPTH	6	^{+0.2} / ₀
KEY WIDTH	16	⁰ / _{-0.043}
KEY HEIGHT	10	⁰ / _{-0.090}



APPD BY	S.K.HAN	UNIT	mm	SUBJECT	KS, IEC Fr.180L	DWG SIZE	A4 (1:9)
CHKD BY	S.Y.KIM	SCALE	1/9	TITLE	OUTLINE		
CHKD BY	R.G.KIM	PROJEC'N	3각법(3rd Angle)	REF. NO		Sheet No.	of
DSND BY	S.H.YUN	DATE	2011-10-22	DWG NO	LM-T1185B3PL001	Revision No.	3





▽	50S
▽▽	12.5S
▽▽▽	3.2S
▽▽▽▽	0.4S

REV	DATE	CONTENTS	REVD BY	CHKD BY	CHKD BY	APPD BY	일반가공공차		일반제관공차	
							1-4	±0.1	6-30	±0.5
							4-18	±0.2	30-120	±0.8
							18-63	±0.3	120-315	±1.2
							63-250	±0.5	315-1000	±2.0
							250-	±0.8	1000-	±3.0

Q'TY	DESCRIPTION	MATERIAL	DIMENSION	WEIGHT	PART NO.	REMARK	NO.
APPD BY	S.K.HAN	UNIT	mm	SUBJECT	FR.160~180 (CAST IRON)		DWG SIZE
CHKD BY	S.Y.KIM	SCALE	1/2	TITLE			A3 (1:2)
CHKD BY	R.G.KIM	PROJEC'N	3각법 (3rd Angle)	Main Terminal Box Assembly			
DSND BY	H.K.LEE	DATE	2011-08-30	REF. NO.	227B8008LA2	Sheet No.	of
				DWG NO.	3M-145860	Revision No.	2