

Customer :
Project Name :
Project No. :
Revision No. :

SPECIFICATION for INDUCTION MOTOR



Contents

- | | |
|--------------------------------------|-----------|
| 1 . Data Sheet of AC Induction Motor | - 1Sheets |
| 2 . Speed-Torque & Current Curve | - 1Sheets |
| 3 . Outline Dimension Drawing | - 1Sheets |
| 4 . Main Terminal Box Drawing | - 1Sheets |



AC INDUCTION MOTOR DATA SHEET

Model No.or RFQ No.	4606KSTD40SSDS1STFE3V11DL0SD	Item No.		Rev. No.	[]
Project Name		Project No.		Quantity	

GENERAL SPECIFICATION			PERFORMANCE DATA					
Frame Size	160L		Rated Output	11 kW	15 HP			
Type	HLP-11/6		Number of Poles	6				
Enclosure(Protection)	Totally Enclosed (IP55)		Rotor Type	Squirrel Cage				
Method of Cooling	IC411(FC)		Starting Method*	<input checked="" type="checkbox"/> D.O.L	<input type="checkbox"/> Y-Δ			
Rated Frequency	60 Hz		Rated Voltage	460 V				
Number of Phases	3		Current	Full Load	19.8 A			
Insulation Class	<input checked="" type="checkbox"/> F <input type="checkbox"/> B <input type="checkbox"/> H			Locked-rotor**	670 %			
Temp. Rise at full load (by resistance method)			Efficiency					
at 1.0 S.F			80 deg. C					
Motor Location	<input checked="" type="checkbox"/> Indoor <input type="checkbox"/> Outdoor		50% Load					
Altitude	Less than 1000		75% Load					
Relative Humidity	Less than 80 %		100% Load					
Ambient Temp.	40 deg. C (Max.)		Power Factor(p.u)					
Duty Type	Continuous(S1)		50% Load					
Service Factor	1.15		75% Load					
Mounting	<input type="checkbox"/> B3 <input type="checkbox"/> B5 <input checked="" type="checkbox"/> V1 <input type="checkbox"/> B3/B5		100% Load					
Bearing	Type	Anti-Friction	Speed at Full Load					
	DE/N-DE	6309ZZC3 / 6309ZZC3	1175 r.p.m					
	Lubricant	Grease(Polyrex-EM)	Torque					
External Thrust	Not applicable		Full Load					
Coupling Method	<input checked="" type="checkbox"/> Direct <input type="checkbox"/> V-Belt		9.1 kg·m					
Shaft Extension	<input checked="" type="checkbox"/> Single <input type="checkbox"/> Double		Locked-rotor**					
Terminal Box	Main	<input type="checkbox"/> Steel <input checked="" type="checkbox"/> Cast Iron	Breakdown**					
	Aux.	<input type="checkbox"/> Yes <input checked="" type="checkbox"/> No	240 %					
	Location	Refer to Outline Drawing	Moment of Inertia (J)					
Application			Load(Max.)					
Area classification	Not applicable		20.250 kg·m²					
Type of Ex-Protection	Non-Hazardous		Motor					
Applicable Standard	KS, IEC, NEMA MG1 Part30(Vpeak)		0.130 kg·m²					
ACCESSORIES			Sound Pressure Level (No-load & mean value at 1m from motor)					
			66 dB(A)			Vibration		
			2.2 mm/sec (r.m.s)			Permissible number of consecutive starts		
			Cold 3 times			Paint		
			Hot 2 times			Munsell No.		
			4.4PB5.5/5.6(VL-451)			SUBMITTAL DRAWING		
			Outline Dimension Drawing \ Motor Weight(Approx.)			V1		
			LM-T1165V1PL001			141 kg		
			Main T-Box Ass'y			3M-145860		

ACCESSORIES			SUBMITTAL DRAWING					
			Sound Pressure Level (No-load & mean value at 1m from motor)					
			66 dB(A)			Vibration		
			2.2 mm/sec (r.m.s)			Permissible number of consecutive starts		
			Cold 3 times			Paint		
			Hot 2 times			Munsell No.		
			4.4PB5.5/5.6(VL-451)			SUBMITTAL DRAWING		
			Outline Dimension Drawing \ Motor Weight(Approx.)			V1		
			LM-T1165V1PL001			141 kg		
			Main T-Box Ass'y			3M-145860		

REMARK		
*.Premium Efficiency(IE3)		
*.For use on PWM VFD 10:1VT,3:1CT@1.0S.F&F Temp.rise		

SPARE PARTS		

Date	DSND	CHKD	CHKD	APPD
2018-04-25	R.G. KIM	-	O.J. KIM	S.K. HAN

Note: Others not mentioned in this data sheet shall be in accordance with maker standard.
 Above technical data are only design values and shall be guaranteed with tolerance of applicable standard.
 Inspection and performance test shall be maker standard, if not mentioned.
 * In case of Inverter-Fed Motor, performance data is based on sine wave tests.
 ** The data are based on rated voltage & frequency, and data are expressed as a percentage of full load value.

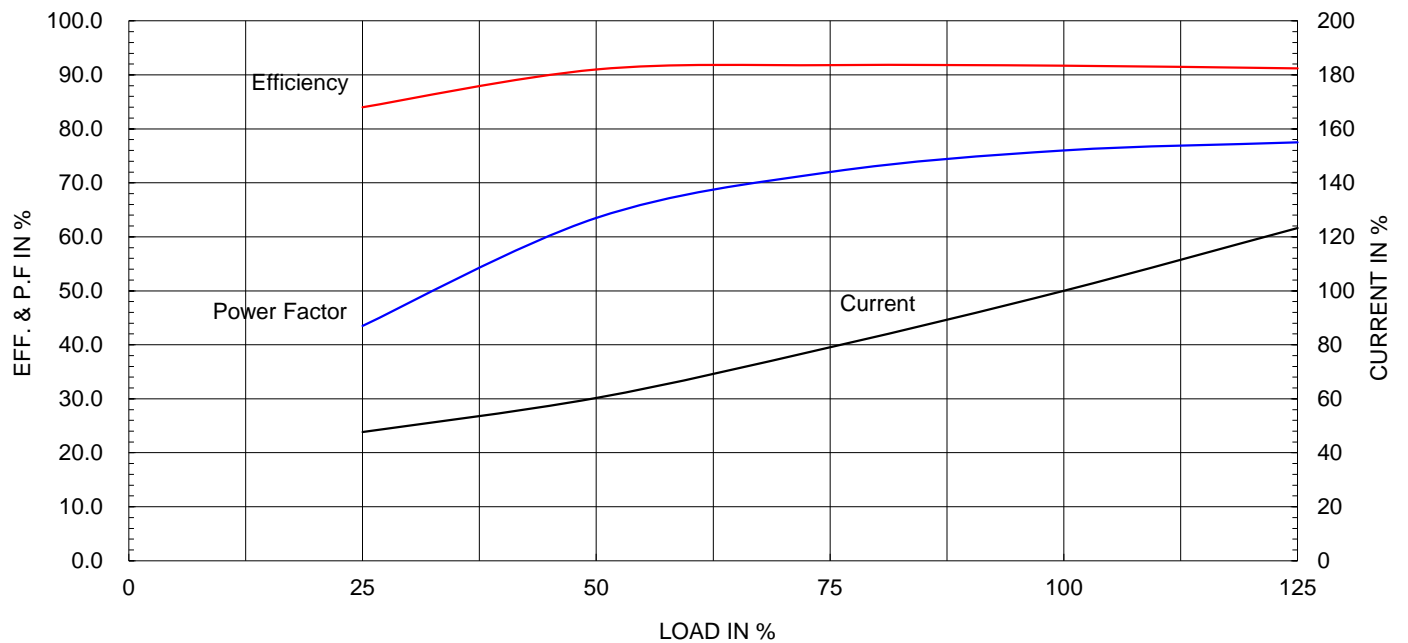
Type :	HLP-11/6	
Full Load Torque :	9.1	kg.m
Motor moment of Inertia (J) :	0.130	kg.m ²
Load moment of Inertia (J) :	20.250	kg.m ²

11 kW	6 P	60 Hz
Speed at Full Load :		1175 RPM
Rated Voltage	460V	
Full Load Current	19.8A	

SPEED VS TORQUE & CURRENT CURVE



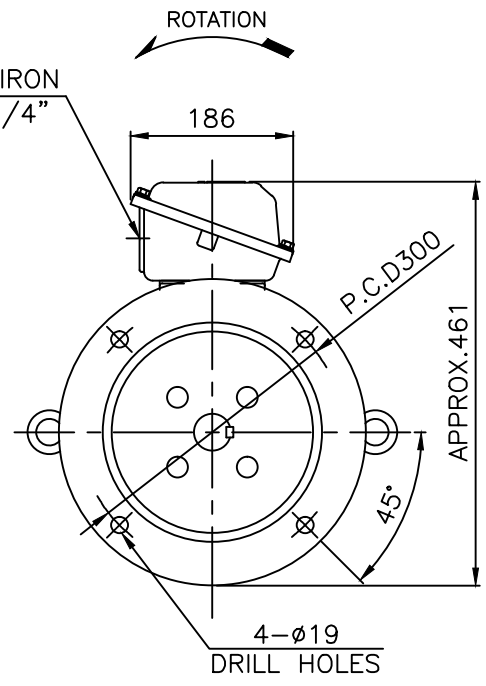
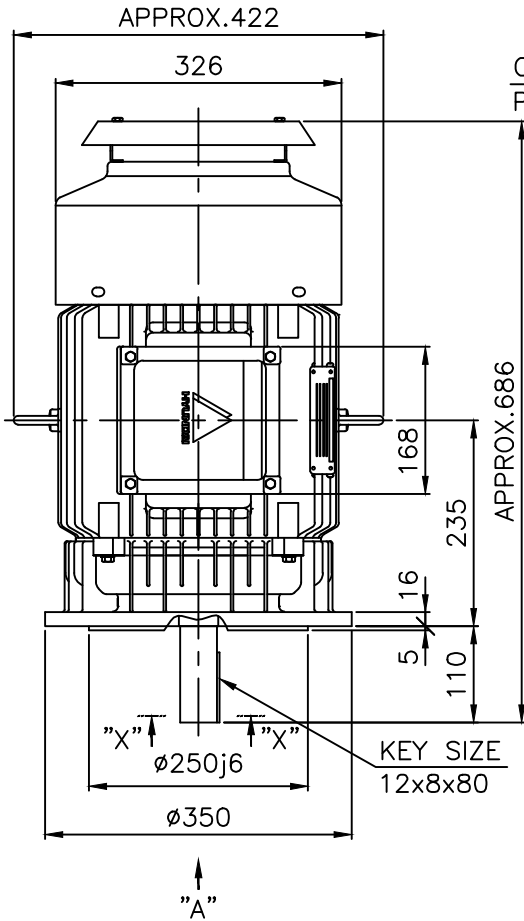
OUTPUT VS EFF., P.F & CURRENT CURVE



본 도면은 현대일렉트릭(주) 재산이므로
허가없이 복사할 수 없음 (취급주의)

THIS DRAWING IS PROPRIETARY TO HYUNDAI ELECTRIC. NO PART OF THIS DRAWING
MAY BE REPRODUCED WITHOUT THE PERMISSION OF HYUNDAI ELECTRIC.

1	2	3	4
▽	50S	REV	DATE
▽▽	12.5S		
▽▽▽	3.2S		
▽▽▽▽	0.4S		
		CONTENTS	REVD BY
			CHKD BY
			CHKD BY
			APPD BY

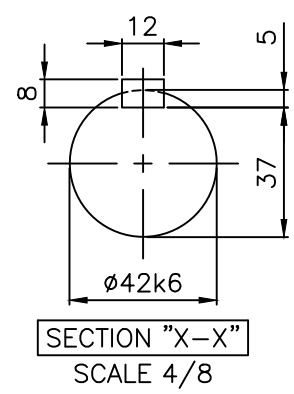


VIEW "A"

NOTE

1.TOLERANCE :

FLANGE HOLES	ø19	+0.52 0
RABBET DIAMETER	ø250	+0.016 -0.013
SHAFT DIAMETER	ø42	+0.018 +0.002
KEYWAY WIDTH	12	0 -0.043
KEYWAY DEPTH	5	+0.2 0
KEY WIDTH	12	0 -0.043
KEY HEIGHT	8	0 -0.090



SECTION "X-X"
SCALE 4/8

APPD BY	S.K.HAN	UNIT	mm	SUBJECT	KS, IEC Fr.160L	DWG SIZE
CHKD BY	S.Y.KIM	SCALE	1/8			A4 (1:8)
CHKD BY	R.G.KIM	PROJEC'N	3각법 (3rd Angle)	TITLE OUTLINE		
DSND BY	S.H.YUN	DATE	2011-10-24			
HYUNDAI ELECTRIC				REF. NO		Sheet No. of
				DWG NO	LM-T1165V1PL001	Revision No. 1



▽	50S
▽▽	12.5S
▽▽▽	3.2S
▽▽▽▽	0.4S

REV	DATE	CONTENTS	REVD BY	CHKD BY	CHKD BY	APPD BY	일반가공공차		일반제관공차	
							1-4	±0.1	6-30	±0.5
							4-18	±0.2	30-120	±0.8
							18-63	±0.3	120-315	±1.2
							63-250	±0.5	315-1000	±2.0
							250-	±0.8	1000-	±3.0

Q'TY	DESCRIPTION	MATERIAL	DIMENSION	WEIGHT	PART NO.	REMARK	NO.
APPD BY	S.K.HAN	UNIT	mm	SUBJECT	FR.160~180 (CAST IRON)		DWG SIZE
CHKD BY	S.Y.KIM	SCALE	1/2	TITLE			A3 (1:2)
CHKD BY	R.G.KIM	PROJEC'N	3각법(3rd Angle)	Main Terminal Box Assembly			
DSND BY	H.K.LEE	DATE	2011-08-30	REF. NO.	227B8008LA2	Sheet No.	of
				DWG NO.	3M-145860	Revision No.	2