

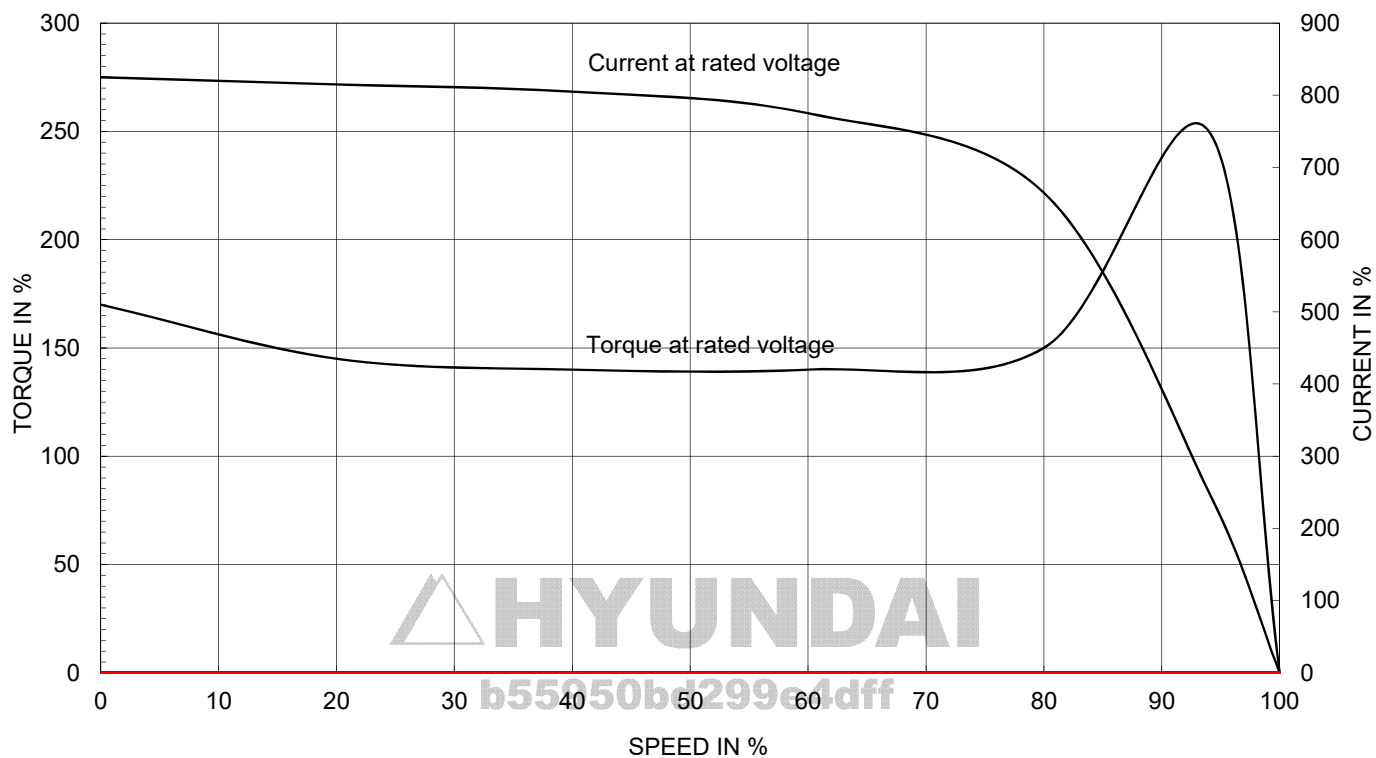
AC INDUCTION MOTOR DATA SHEET

Model No.or RFQ No.		Item No.		Rev. No.		[0]			
Project Name		Project No.		Quantity		set			
GENERAL SPECIFICATION				PERFORMANCE DATA					
Frame Size		160M		Rated Output		7.5 kW 10 HP			
Type		HLP-7.5/6		Number of Poles		6			
Enclosure(Protection)		Totally Enclosed (IP55)		Rotor Type		Squirrel Cage			
Method of Cooling		IC411(FC)		Starting Method*		<input checked="" type="checkbox"/> D.O.L <input type="checkbox"/> Y-Δ			
Rated Frequency		60 Hz		Rated Voltage		440 V 380 V 220 V			
Number of Phases		3		Current		Full Load 15.0 A 17.4 A 30.0 A			
Insulation Class		<input checked="" type="checkbox"/> F <input type="checkbox"/> B <input type="checkbox"/> H		Locked-rotor**		825 % 825 % 825 %			
Temp. Rise at full load (by resistance method)				Efficiency					
at 1.0 S.F		80 °C		50% Load		89.1 %			
Motor Location		<input checked="" type="checkbox"/> Indoor <input type="checkbox"/> Outdoor		75% Load		90.7 %			
Altitude		Less than 1000m		100% Load		91.0 %			
Relative Humidity		Less than 80 %		Power Factor(p.u)					
Ambient Temp.		40 °C MAX.		50% Load		0.508			
Duty Type		Continuous(S1)		75% Load		0.640			
Service Factor		1.15		100% Load		0.720			
Mounting		<input type="checkbox"/> B3 <input checked="" type="checkbox"/> B5 <input type="checkbox"/> V1 <input type="checkbox"/> B3/B5		Speed at Full Load		1175 r.p.m			
Bearing		Type Anti-Friction		Torque					
		DE/N-DE 6309ZZC3 / 6309ZZC3		Full Load		6.2 kg.m			
		Lubricant Grease(Polyrex-EM)		Locked-rotor**		170 %			
External Thrust		Not applicable		Breakdown**		250 %			
Coupling Method		<input checked="" type="checkbox"/> Direct <input type="checkbox"/> V-Belt		Moment of Inertia (J)					
Shaft Extension		<input checked="" type="checkbox"/> Single <input type="checkbox"/> Double		Load(Max.)		15.54255319 kg.m²			
Terminal Box		Main <input type="checkbox"/> Steel <input checked="" type="checkbox"/> Cast Iron		Motor		0.13 kg.m²			
		Aux. <input type="checkbox"/> Yes <input checked="" type="checkbox"/> No		Sound Pressure Level (No-load & mean value at 1m from motor)					
		Location Refer to Outline Drawing				56 dB(A)			
Application				Vibration		2.2 mm/sec(r.m.s)			
Area classification		Non-Hazardous		Permissible number of consecutive starts		Cold 3 times			
Type of Ex-Protection		Not applicable				Hot 2 times			
Applicable Standard		KS, IEC, NEMA MG1 Part30(Vpeak)		Paint		Munsell No. Panton279C			
ACCESSORIES				SUBMITTAL DRAWING					
				Outline Dimension Drawing \ Motor Weight(Approx.)					
				B3				kg	
				B5		LM-T1163B5PLV01		118 kg	
				V1				kg	
				B3/B5				kg	
				Main T-Box Ass'y		3M-145860			
				REMARK					
				*.Premium Efficiency(IE3)					
				*.For use on PWM VFD 10:1VT,3:1CT@ 1.0S.F&F Temp.rise					
SPARE PARTS									
				Date		DSND		CHKD	
				2018-11-23		R.G. KIM		---	

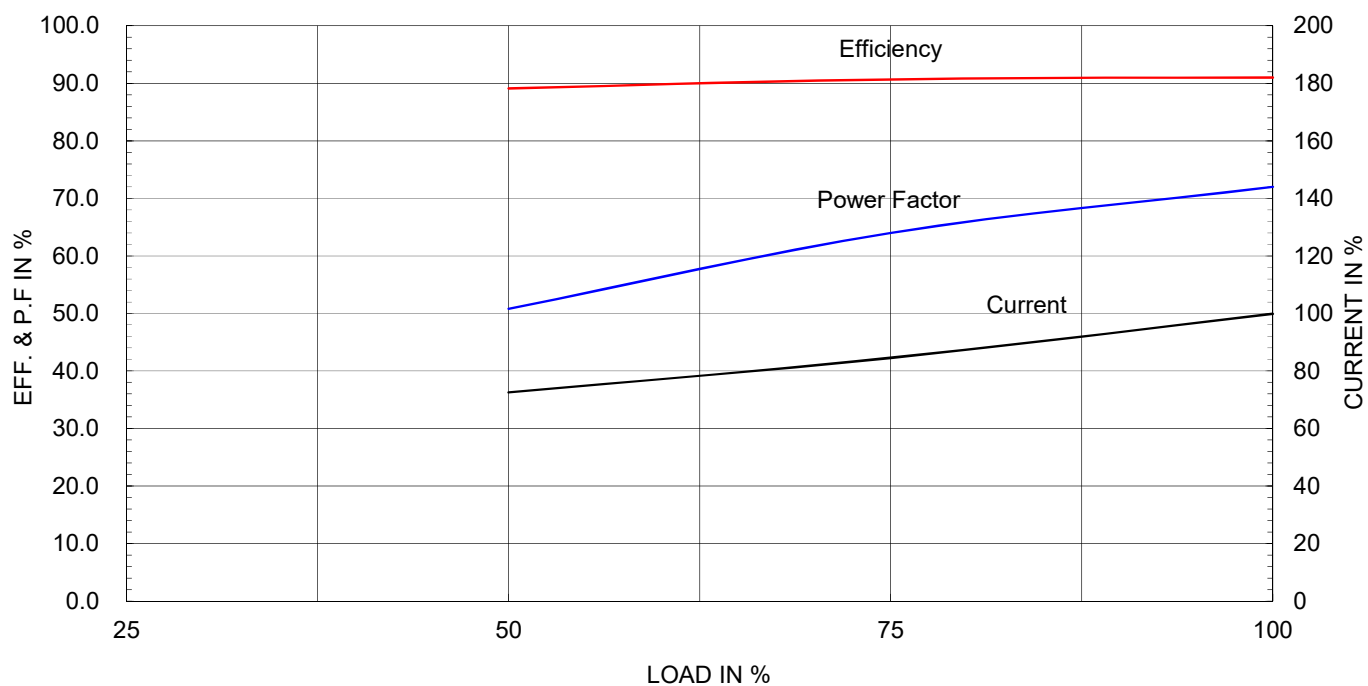
Type	:	HLP-7.5/6
Full Load Torque :	6.2	Kg-m
Load moment of Inertia (J) :	15.543	Kg-m ²
Motor moment of Inertia (J) :	0.130	Kg-m ²

7.5kW	10HP	6P	60 Hz
Speed at Full Load : 1175 RPM			
Rated Voltage	440V	380V	220V
Full Load Current	15.0A	17.4A	30.0A

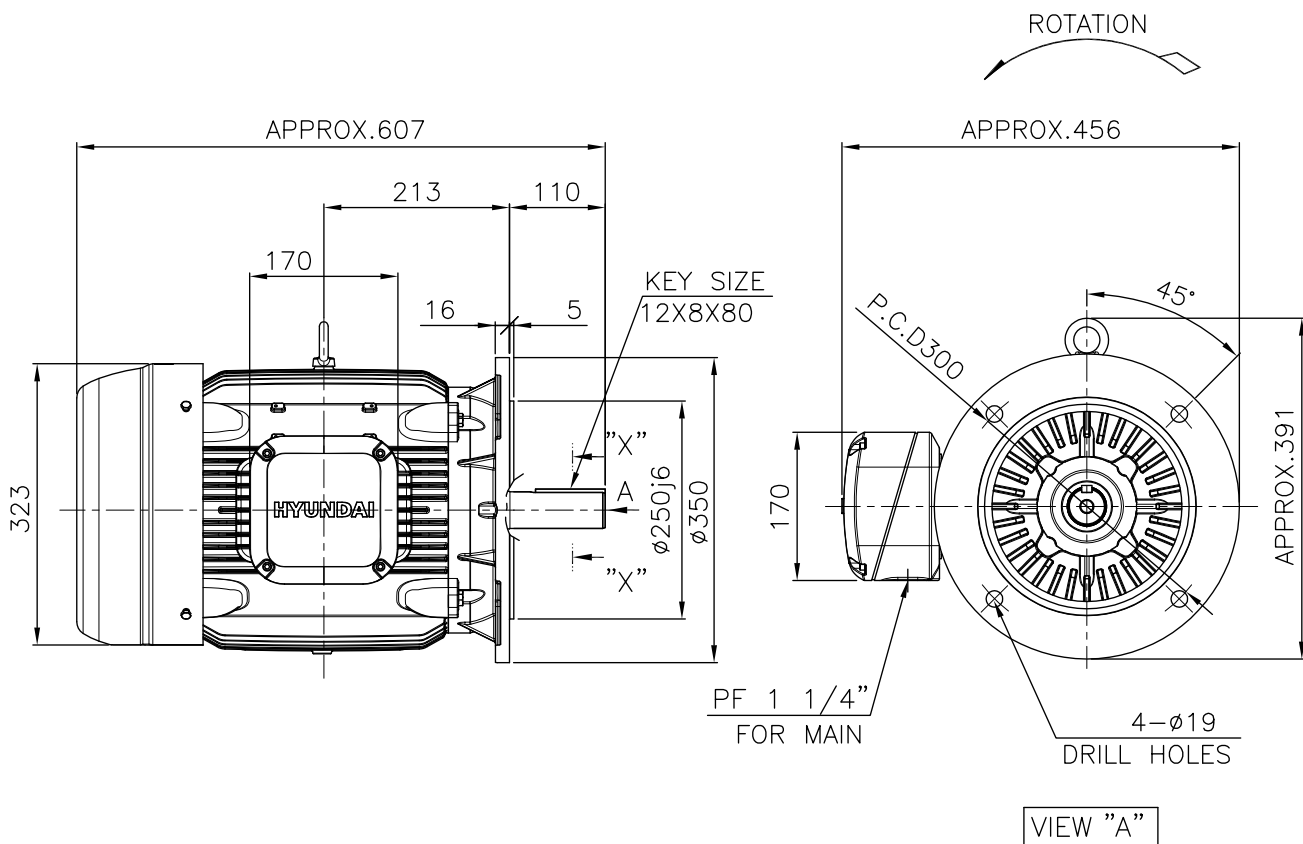
SPEED VS TORQUE & CURRENT CURVE



OUTPUT VS EFF., P.F & CURRENT CURVE



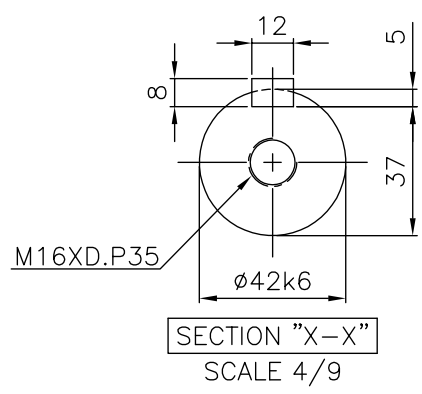
1		2		3		4			
▽	50S	REV	DATE	CONTENTS		REVD BY	CHKD BY	CHKD BY	APPD BY
▽▽	12.5S								
▽▽▽	3.2S								
▽▽▽▽	0.4S								



NOTE

1.TOLERANCE :

FLANGE HOLE	$\phi 19$	$+0.52$ 0
RABBET DIAMETER	$\phi 250$	$+0.016$ -0.013
SHAFT DIAMETER	$\phi 42$	$+0.018$ $+0.002$
KEYWAY WIDTH	12	0 -0.043
KEYWAY DEPTH	5	$+0.2$ 0
KEY WIDTH	12	0 -0.043
KEY HEIGHT	8	0 -0.090



APPD BY	S.K.HAN	UNIT	mm	SUBJECT	KS Fr.160M	DWG SIZE	A4 (1:1)
CHKD BY	I.K.KIM	SCALE	1/9	TITLE	OUTLINE		
CHKD BY	S.H.LEE	PROJEC'N	3각법(3rd Angle)				
DSND BY	S.R.KIM	DATE	2020.06.19				
HYUNDAI ELECTRIC				REF. NO		Sheet No.	of
				DWG NO	LM-T1163B5PLV01	Revision No.	0

