

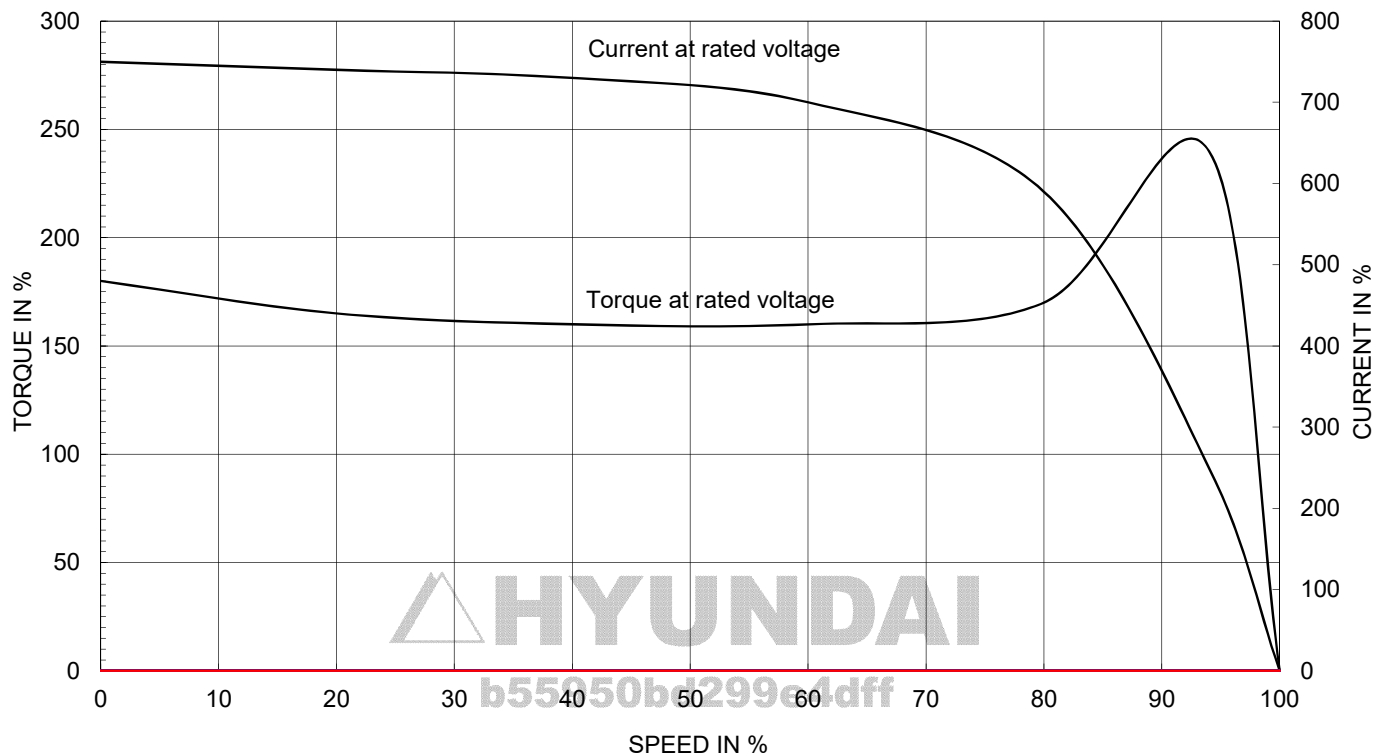
# AC INDUCTION MOTOR DATA SHEET

Model No.or RFQ No.		Item No.		Rev. No.		[ 0 ]			
Project Name		Project No.		Quantity		set			
<b>GENERAL SPECIFICATION</b>				<b>PERFORMANCE DATA</b>					
Frame Size		132M		Rated Output		7.5 kW 10 HP			
Type		HLP-7.5/4		Number of Poles		4			
Enclosure(Protection)		Totally Enclosed ( IP55 )		Rotor Type		Squirrel Cage			
Method of Cooling		IC411(FC)		Starting Method*		<input checked="" type="checkbox"/> D.O.L <input type="checkbox"/> Y-Δ			
Rated Frequency		60 Hz		Rated Voltage		440 V 380 V 220 V			
Number of Phases		3		Current		Full Load 13.9 A 16.1 A 27.9 A			
Insulation Class		<input checked="" type="checkbox"/> F <input type="checkbox"/> B <input type="checkbox"/> H		Locked-rotor**		750 % 750 % 750 %			
Temp. Rise at full load (by resistance method)		at 1.0 S.F 80 °C		Efficiency		50% Load 89.7 %			
Motor Location		<input checked="" type="checkbox"/> Indoor <input type="checkbox"/> Outdoor				75% Load 91.7 %			
Altitude		Less than 1000m				100% Load 91.7 %			
Relative Humidity		Less than 80 %		Power Factor(p.u)		50% Load 0.625			
Ambient Temp.		40 °C MAX.				75% Load 0.725			
Duty Type		Continuous(S1)				100% Load 0.770			
Service Factor		1.15		Speed at Full Load		1760 r.p.m			
Mounting		<input type="checkbox"/> B3 <input checked="" type="checkbox"/> B5 <input type="checkbox"/> V1 <input type="checkbox"/> B3/B5		Torque		Full Load 4.2 kg.m			
Bearing		Type Anti-Friction				Locked-rotor** 180 %			
		DE/N-DE 6208ZZC3 / 6208ZZC3				Breakdown** 240 %			
		Lubricant Grease(Polyrex-EM)		Moment of Inertia (J)		Load(Max.) 6.225852273 kg·m²			
External Thrust		Not applicable				Motor 0.03 kg·m²			
Coupling Method		<input checked="" type="checkbox"/> Direct <input type="checkbox"/> V-Belt		Sound Pressure Level (No-load & mean value at 1m from motor)		54 dB(A)			
Shaft Extension		<input checked="" type="checkbox"/> Single <input type="checkbox"/> Double		Vibration		1.6 mm/sec(r.m.s)			
Terminal Box		Main <input type="checkbox"/> Steel <input checked="" type="checkbox"/> Cast Iron		Permissible number of consecutive starts		Cold 3 times			
		Aux. <input type="checkbox"/> Yes <input checked="" type="checkbox"/> No				Hot 2 times			
		Location Refer to Outline Drawing		Paint		Munsell No. Panton279C			
Application									
Area classification		Non-Hazardous							
Type of Ex-Protection		Not applicable							
Applicable Standard		KS, IEC, NEMA MG1 Part30(Vpeak)							
<b>ACCESSORIES</b>				<b>SUBMITTAL DRAWING</b>					
				Outline Dimension Drawing \ Motor Weight(Approx.)					
				B3			kg		
				B5		LM-T0133B5PLV01	75 kg		
				V1			kg		
				B3/B5			kg		
				Main T-Box Ass'y		3M-148549			
				<b>REMARK</b>					
				*.Premium Efficiency(IE3)					
				*.For use on PWM VFD 10:1VT,3:1CT@ 1.0S.F&F Temp.rise					
<b>SPARE PARTS</b>									
				Date		DSND		CHKD	
				2018-11-23		R.G. KIM		---	

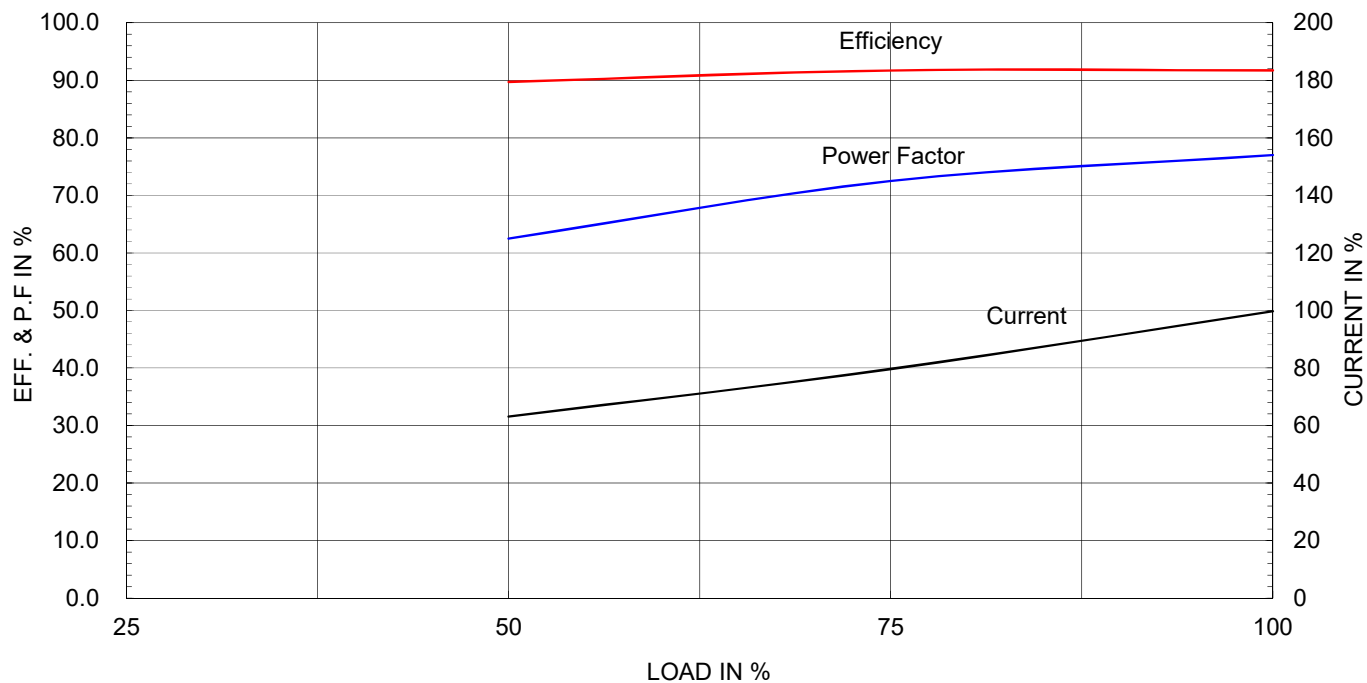
Type :	HLP-7.5/4
Full Load Torque :	4.2 Kg-m
Load moment of Inertia (J) :	6.226 Kg-m <sup>2</sup>
Motor moment of Inertia (J) :	0.030 Kg-m <sup>2</sup>

7.5kW	10HP	4P	60 Hz
Speed at Full Load : 1760 RPM			
Rated Voltage	440V	380V	220V
Full Load Current	13.9A	16.1A	27.9A

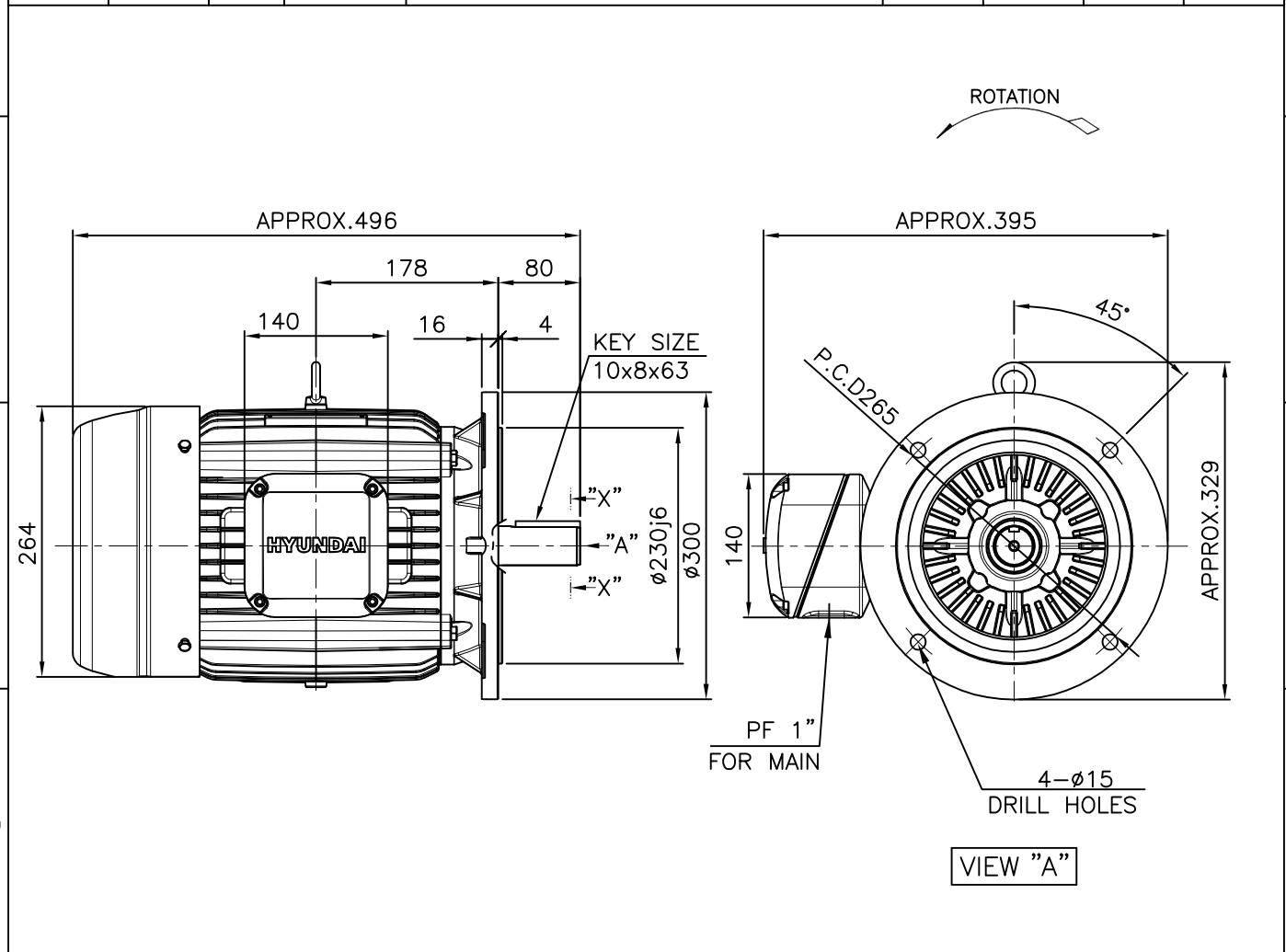
SPEED VS TORQUE & CURRENT CURVE



OUTPUT VS EFF., P.F & CURRENT CURVE



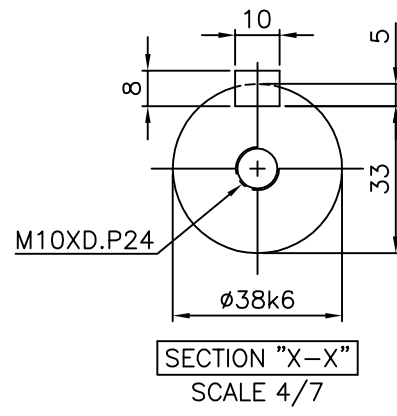
1	2	3	4
▽	50S	REV	DATE
▽▽	12.5S		
▽▽▽	3.2S		
▽▽▽▽	0.4S		



# NOTE

1.TOLERANCE :

FLANGE HOLE	ø15	+0.43 0
RABBET DIAMETER	ø230	+0.016 -0.013
SHAFT DIAMETER	ø38	+0.018 +0.002
KEYWAY WIDTH	10	0 -0.036
KEYWAY DEPTH	5	+0.2 0
KEY WIDTH	10	0 -0.036
KEY HEIGHT	8	0 -0.090

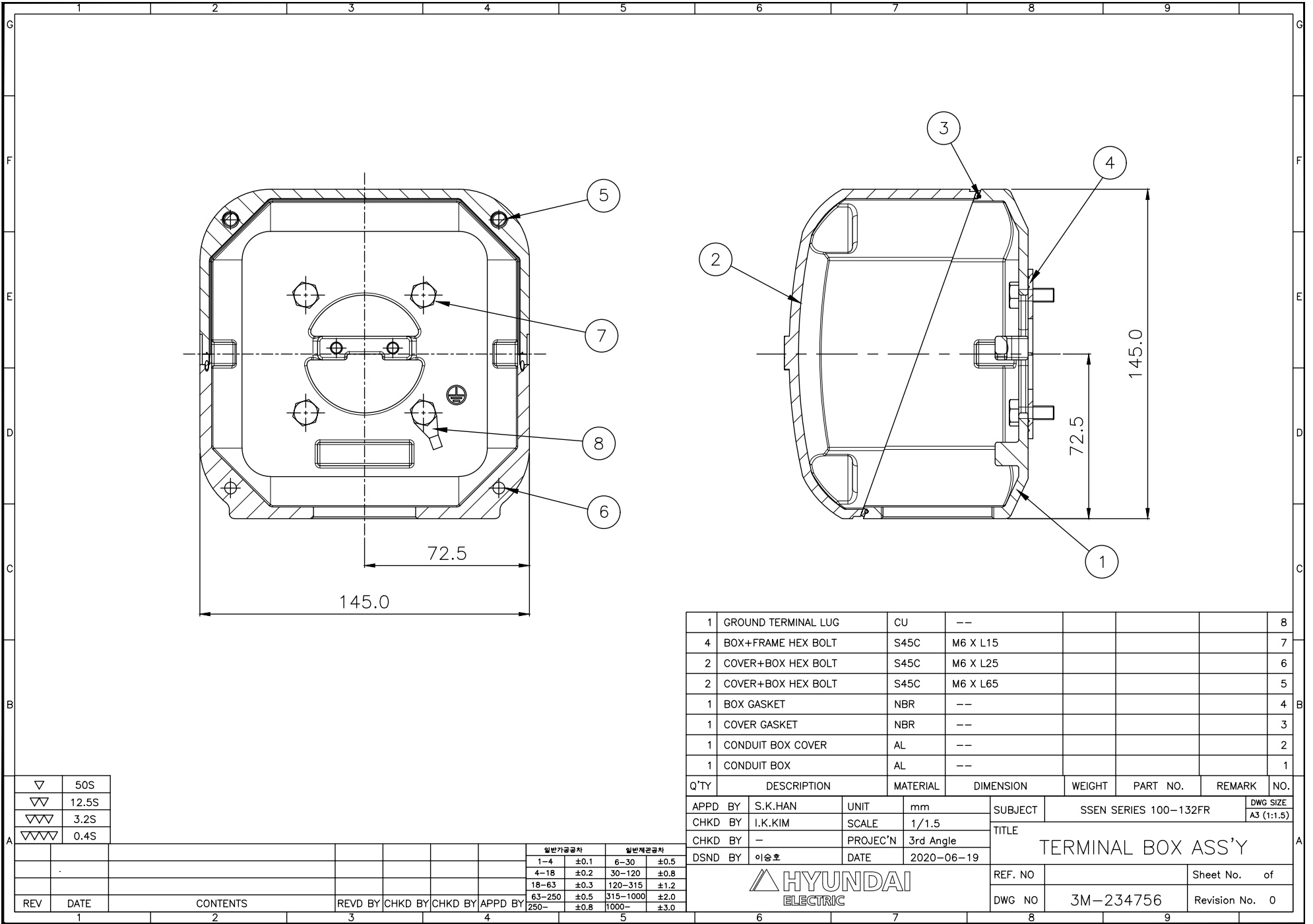


APPD BY	S.K.HAN	UNIT	mm	SUBJECT	KS Fr.132M	DWG SIZE
CHKD BY	I.K.KIM	SCALE	1/7			A4 ( 1:7 )
CHKD BY	S.H.LEE	PROJEC'N	3각법 (3rd Angle)	TITLE	OUTLINE	
DSND BY	S.R.KIM	DATE	2020.06.19			
HYUNDAI ELECTRIC				REF. NO		Sheet No. of
				DWG NO	LM-T1133B5PLV01	Revision No. 0

THIS DRAWING IS PROPRIETARY TO HYUNDAI ELECTRIC. NO PART OF THIS DRAWING  
MAY BE REPRODUCED WITHOUT THE PERMISSION OF HYUNDAI ELECTRIC.

본 도면은 현대일렉트릭(주) 재산이므로  
허가없이 복사할 수 없음 (취급유의)

HYUNDAI  
ELECTRIC



▽	50S
▽▽	12.5S
▽▽▽	3.2S
▽▽▽▽	0.4S

REV	DATE	CONTENTS	REV'D BY	CHK'D BY	CHK'D BY	APPD BY
1						

일반가공공차	일반계관공차
1~4 ±0.1	6~30 ±0.5
4~18 ±0.2	30~120 ±0.8
18~63 ±0.3	120~315 ±1.2
63~250 ±0.5	315~1000 ±2.0
250~ ±0.8	1000~ ±3.0

1	GROUND TERMINAL LUG	CU	--				8
4	BOX+FRAME HEX BOLT	S45C	M6 X L15				7
2	COVER+BOX HEX BOLT	S45C	M6 X L25				6
2	COVER+BOX HEX BOLT	S45C	M6 X L65				5
1	BOX GASKET	NBR	--				4
1	COVER GASKET	NBR	--				3
1	CONDUIT BOX COVER	AL	--				2
1	CONDUIT BOX	AL	--				1
Q'TY	DESCRIPTION	MATERIAL	DIMENSION	WEIGHT	PART NO.	REMARK	NO.
APPD BY	S.K.HAN	UNIT	mm	SUBJECT	SSEN SERIES 100-132FR		DWG SIZE A3 (1:1.5)
CHKD BY	I.K.KIM	SCALE	1/1.5	TITLE	TERMINAL BOX ASS'Y		
CHKD BY	-	PROJEC'N	3rd Angle	REF. NO	Sheet No. of		
DSND BY	이승호	DATE	2020-06-19	DWG NO	3M-234756	Revision No.	0

HYUNDAI  
ELECTRIC