

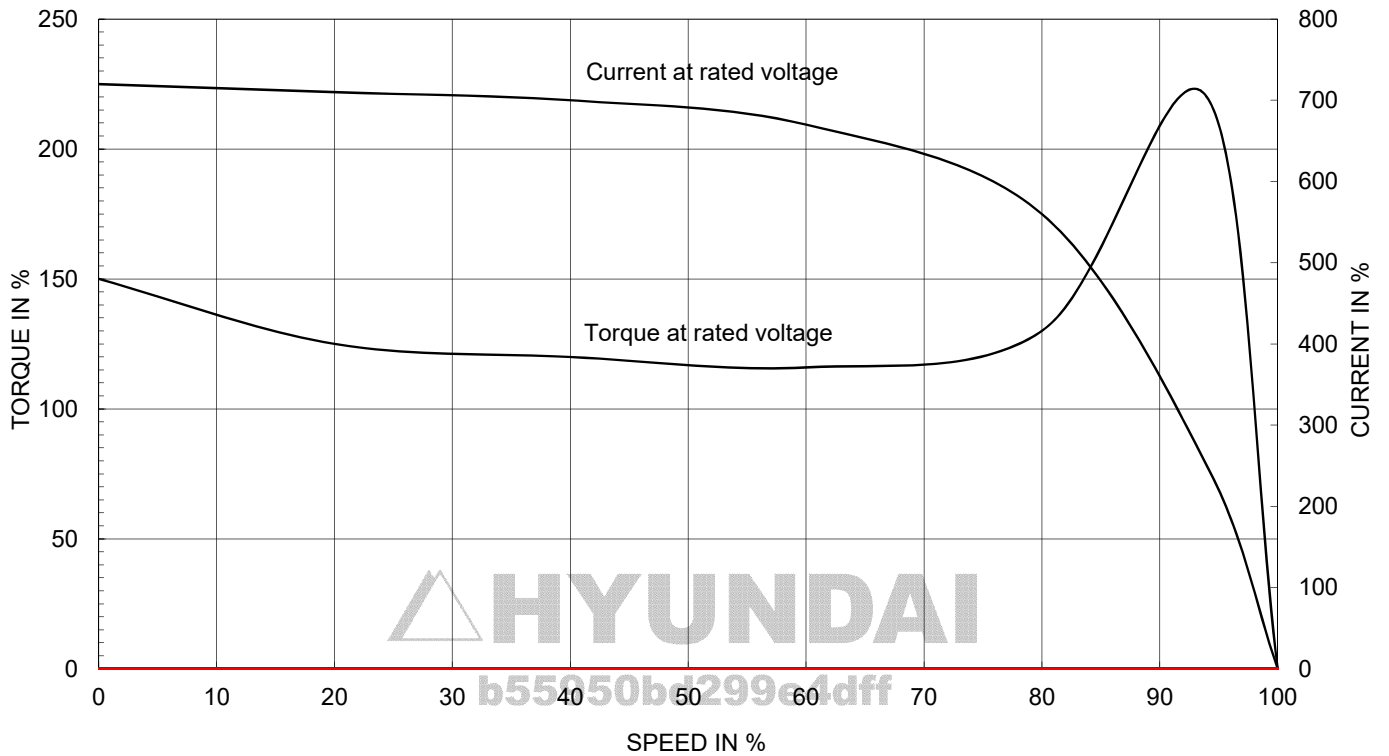
AC INDUCTION MOTOR DATA SHEET

Model No.or RFQ No.		Item No.		Rev. No.		[0]			
Project Name		Project No.		Quantity		set			
GENERAL SPECIFICATION				PERFORMANCE DATA					
Frame Size		200L		Rated Output		30 kW 40 HP			
Type		HLP-30/6		Number of Poles		6			
Enclosure(Protection)		Totally Enclosed (IP55)		Rotor Type		Squirrel Cage			
Method of Cooling		IC411(FC)		Starting Method*		<input checked="" type="checkbox"/> D.O.L <input type="checkbox"/> Y-Δ			
Rated Frequency		60 Hz		Rated Voltage		440 V 380 V 220 V			
Number of Phases		3		Current		Full Load 52.2 A 60.5 A 104.5 A			
Insulation Class		<input checked="" type="checkbox"/> F <input type="checkbox"/> B <input type="checkbox"/> H		Locked-rotor**		720 % 720 % 720 %			
Temp. Rise at full load (by resistance method)		at 1.0 S.F 80 °C		Efficiency		50% Load 94.0 %			
Motor Location		<input checked="" type="checkbox"/> Indoor <input type="checkbox"/> Outdoor				75% Load 94.3 %			
Altitude		Less than 1000m				100% Load 94.1 %			
Relative Humidity		Less than 80 %		Power Factor(p.u)		50% Load 0.660			
Ambient Temp.		40 °C MAX.				75% Load 0.757			
Duty Type		Continuous(S1)				100% Load 0.801			
Service Factor		1.15		Speed at Full Load		1185 r.p.m			
Mounting		<input type="checkbox"/> B3 <input checked="" type="checkbox"/> B5 <input type="checkbox"/> V1 <input type="checkbox"/> B3/B5		Torque		Full Load 24.7 kg.m			
Bearing		Type Anti-Friction				Locked-rotor** 150 %			
		DE/N-DE 6313ZC3 / 6212ZC3				Breakdown** 220 %			
		Lubricant Grease(Polyrex-EM)		Moment of Inertia (J)		Load(Max.) 54.24810127 kg·m²			
External Thrust		Not applicable				Motor 0.38 kg·m²			
Coupling Method		<input checked="" type="checkbox"/> Direct <input type="checkbox"/> V-Belt		Sound Pressure Level (No-load & mean value at 1m from motor)		68 dB(A)			
Shaft Extension		<input checked="" type="checkbox"/> Single <input type="checkbox"/> Double		Vibration		2.2 mm/sec(r.m.s)			
Terminal Box		Main <input type="checkbox"/> Steel <input checked="" type="checkbox"/> Cast Iron		Permissible number of consecutive starts		Cold 3 times			
		Aux. <input type="checkbox"/> Yes <input checked="" type="checkbox"/> No				Hot 2 times			
		Location Refer to Outline Drawing		Paint		Munsell No. Panton279C			
Application									
Area classification		Non-Hazardous							
Type of Ex-Protection		Not applicable							
Applicable Standard		KS, IEC, NEMA MG1 Part30(Vpeak)							
ACCESSORIES				SUBMITTAL DRAWING					
				Outline Dimension Drawing \ Motor Weight(Approx.)					
				B3				kg	
				B5		LM-T1205B5PLV01		297 kg	
				V1				kg	
				B3/B5				kg	
				Main T-Box Ass'y		3M-145864			
				REMARK					
				*.Premium Efficiency(IE3)					
				*.For use on PWM VFD 10:1VT,3:1CT@ 1.0S.F&F Temp.rise					
SPARE PARTS									
				Date		DSND		CHKD	
				2018-11-23		R.G. KIM		---	

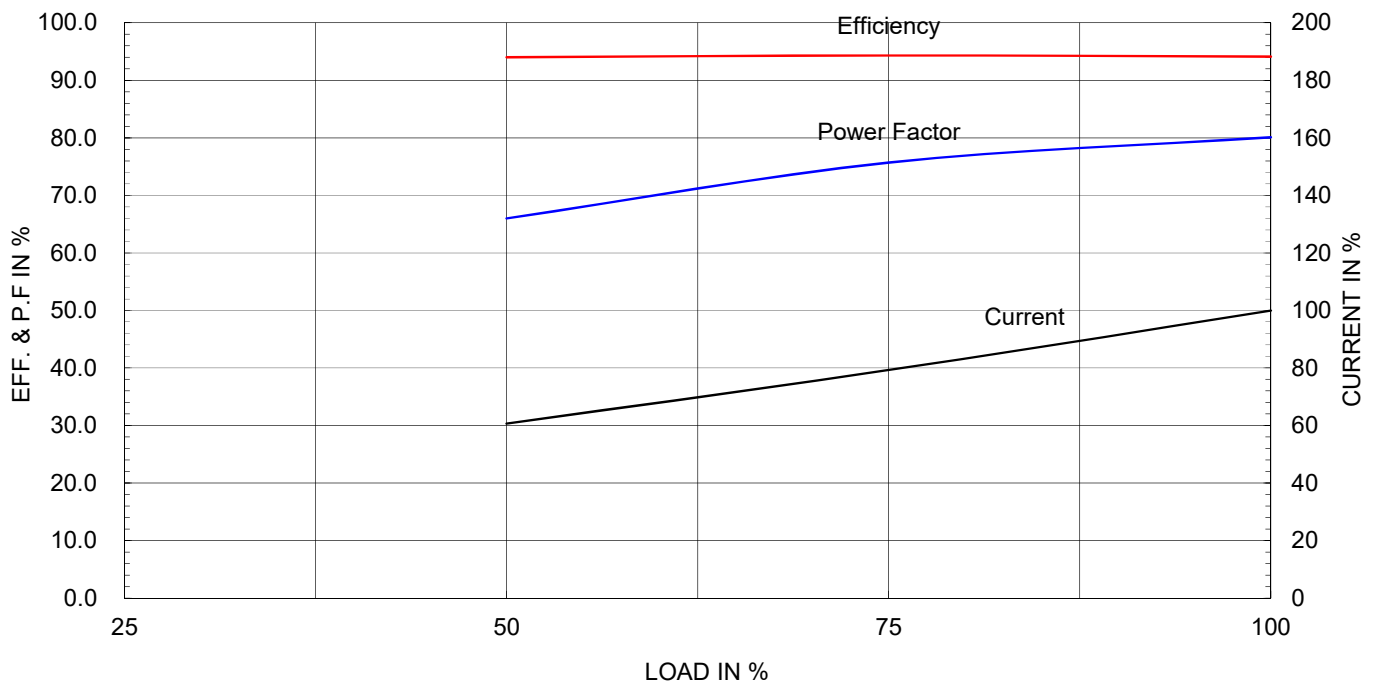
Type :	HLP-30/6
Full Load Torque :	24.7 Kg-m
Load moment of Inertia (J) :	54.248 Kg-m ²
Motor moment of Inertia (J) :	0.380 Kg-m ²

30kW	40HP	6P	60 Hz
Speed at Full Load : 1185 RPM			
Rated Voltage	440V	380V	220V
Full Load Current	52.2A	60.5A	104.5A

SPEED VS TORQUE & CURRENT CURVE



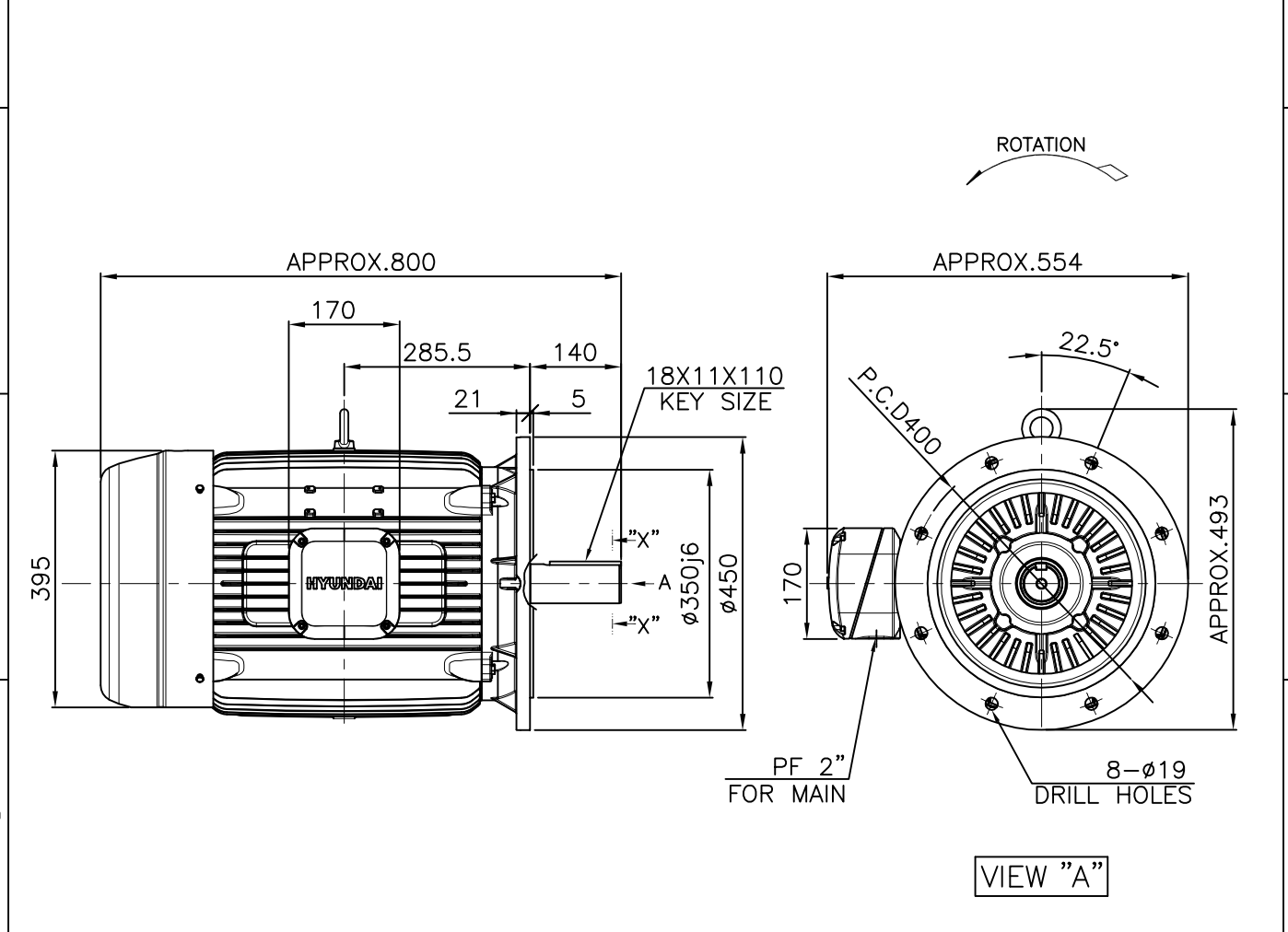
OUTPUT VS EFF., P.F & CURRENT CURVE



본 도면은 현대일렉트릭(주) 재산이므로
허가없이 복사할 수 없음 (취급주의)

THIS DRAWING IS PROPRIETARY TO HYUNDAI ELECTRIC. NO PART OF THIS DRAWING
MAYBE REPRODUCED WITHOUT THE PERMISSION OF HYUNDAI ELECTRIC.

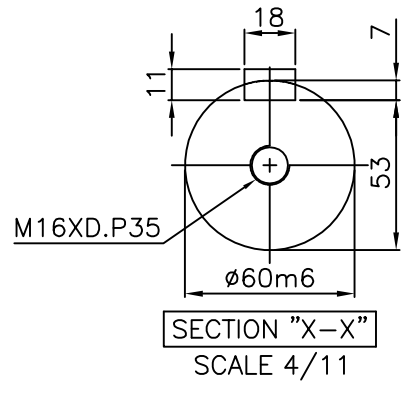
1	2	3	4
▽	50S	REV	DATE
▽▽	12.5S		
▽▽▽	3.2S		
▽▽▽▽	0.4S		



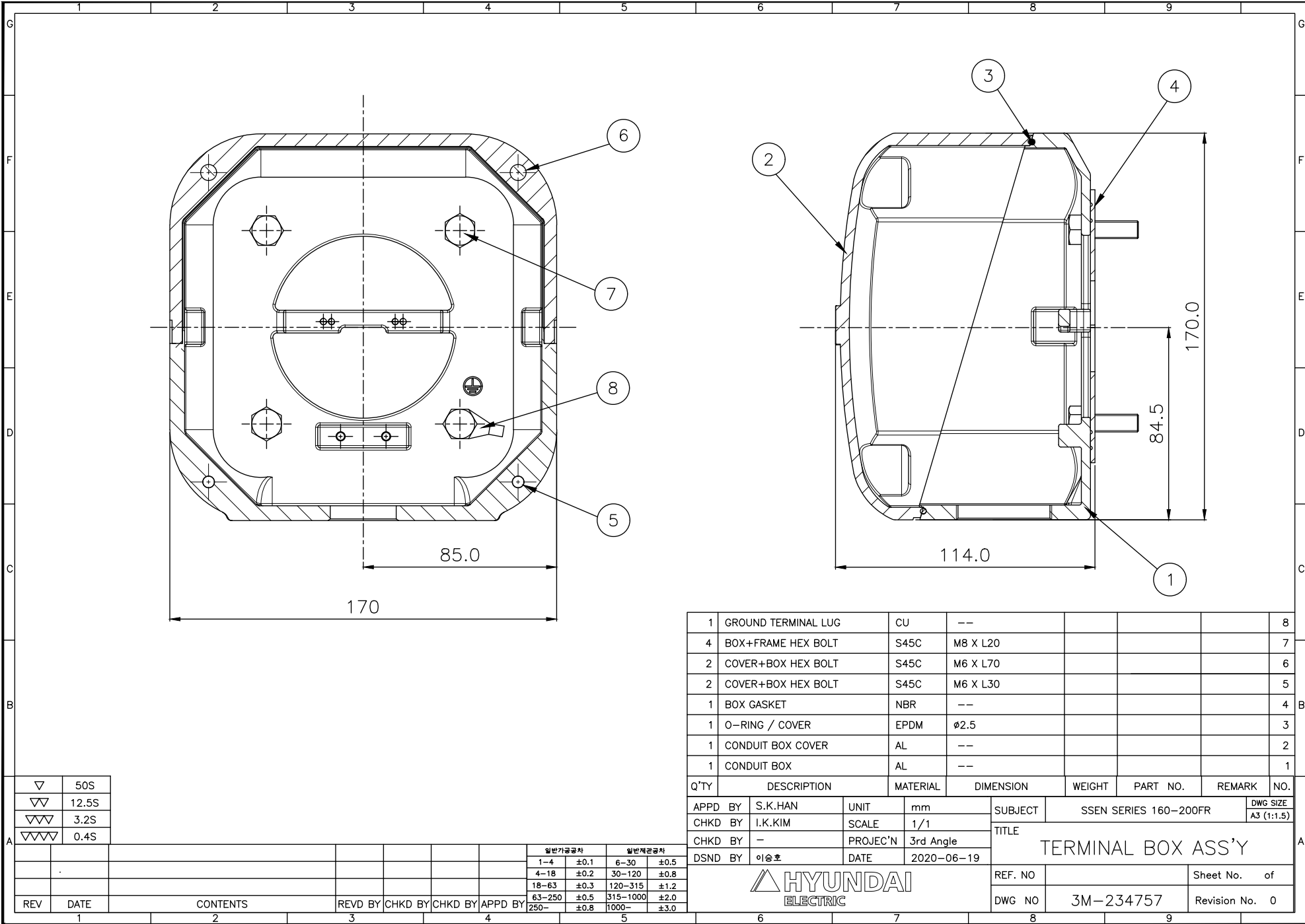
NOTE

1.TOLERANCE :

FLANGE HOLE	ø19	$+0.52$ 0
RABBET DIAMETER	ø350	± 0.018
SHAFT DIAMETER	ø60	$+0.030$ $+0.011$
KEYWAY WIDTH	18	-0.043 0
KEYWAY DEPTH	7	$+0.2$ 0
KEY WIDTH	18	-0.043 0
KEY HEIGHT	11	-0.110 0



APPD BY	S.K.HAN	UNIT	mm	SUBJECT	KS Fr.200L-4~20P	DWG SIZE
CHKD BY	I.K.KIM	SCALE	1/11			A4 (1:11)
CHKD BY	S.H.LEE	PROJEC'N	3각법 (3rd Angle)	TITLE OUTLINE		
DSND BY	S.R.KIM	DATE	2020.06.19			
				REF. NO		Sheet No. of
				DWG NO	LM-T1205B5PLV01	Revision No. 0



▽	50S
▽▽	12.5S
▽▽▽	3.2S
▽▽▽▽	0.4S

REV	DATE	CONTENTS	REVD BY	CHKD BY	CHKD BY	APPD BY	일반기공표	일반계관표
							1-4 ±0.1 6-30 ±0.5	
							4-18 ±0.2 30-120 ±0.8	
							18-63 ±0.3 120-315 ±1.2	
							63-250 ±0.5 315-1000 ±2.0	
							250- ±0.8 1000- ±3.0	

1	GROUND TERMINAL LUG	CU	--				8
4	BOX+FRAME HEX BOLT	S45C	M8 X L20				7
2	COVER+BOX HEX BOLT	S45C	M6 X L70				6
2	COVER+BOX HEX BOLT	S45C	M6 X L30				5
1	BOX GASKET	NBR	--				4
1	O-RING / COVER	EPDM	φ2.5				3
1	CONDUIT BOX COVER	AL	--				2
1	CONDUIT BOX	AL	--				1
Q'TY	DESCRIPTION	MATERIAL	DIMENSION	WEIGHT	PART NO.	REMARK	NO.
APPD BY	S.K.HAN	UNIT	mm	SUBJECT	SSEN SERIES 160-200FR	DWG SIZE	
CHKD BY	I.K.KIM	SCALE	1/1	TITLE	TERMINAL BOX ASS'Y	A3 (1:1.5)	
CHKD BY	-	PROJEC'N	3rd Angle				
DSND BY	이승호	DATE	2020-06-19				
				REF. NO		Sheet No.	of
				DWG NO	3M-234757	Revision No.	0