

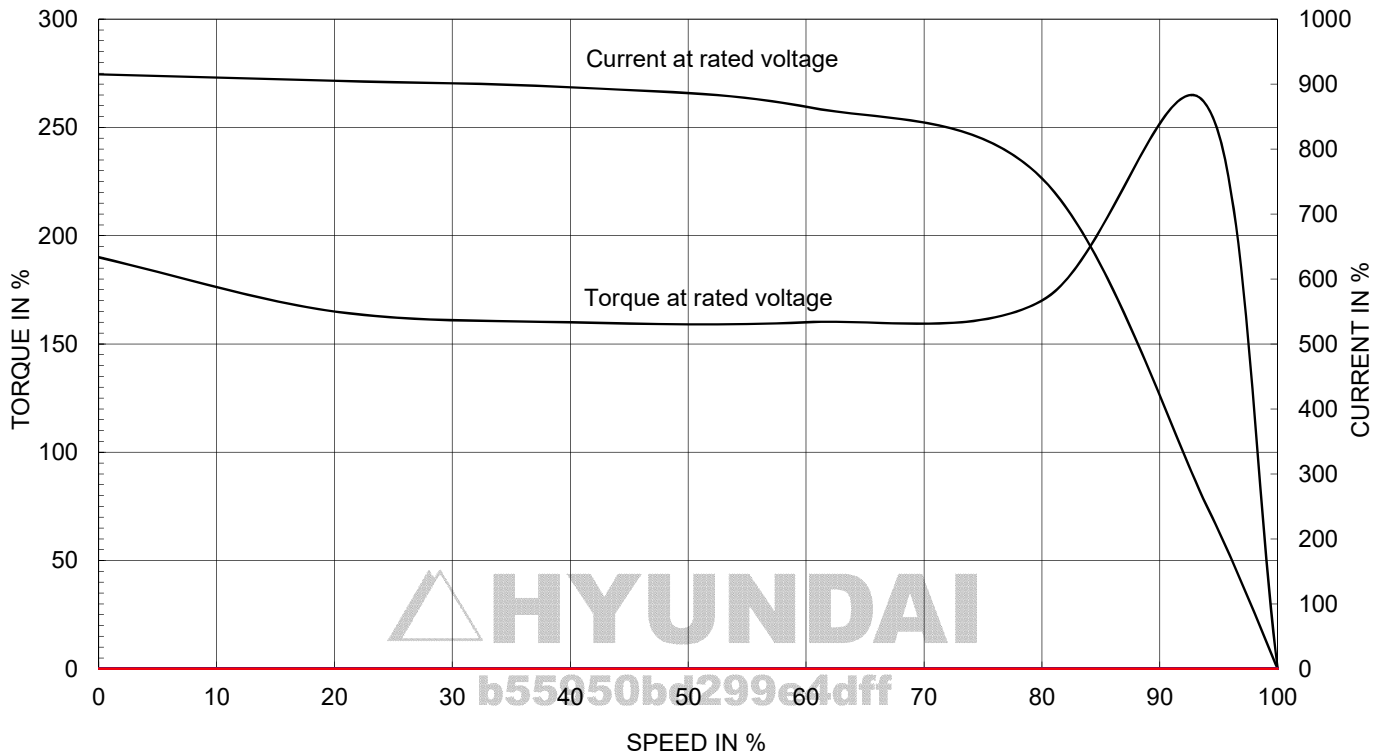
# AC INDUCTION MOTOR DATA SHEET

Model No.or RFQ No.		Item No.		Rev. No.		[ 0 ]			
Project Name		Project No.		Quantity		set			
<b>GENERAL SPECIFICATION</b>				<b>PERFORMANCE DATA</b>					
Frame Size		112M		Rated Output		3.7 kW 5 HP			
Type		HKP-3.7/2		Number of Poles		2			
Enclosure(Protection)		Totally Enclosed ( IP55 )		Rotor Type		Squirrel Cage			
Method of Cooling		IC411(FC)		Starting Method*		<input checked="" type="checkbox"/> D.O.L <input type="checkbox"/> Y-Δ			
Rated Frequency		60 Hz		Rated Voltage		440 V 380 V 220 V			
Number of Phases		3		Current		Full Load 6.4 A 7.4 A 12.8 A			
Insulation Class		<input checked="" type="checkbox"/> F <input type="checkbox"/> B <input type="checkbox"/> H		Locked-rotor**		915 % 915 % 915 %			
Temp. Rise at full load (by resistance method)		at 1.0 S.F 80 °C		Efficiency		50% Load 79.8 %			
Motor Location		<input checked="" type="checkbox"/> Indoor <input type="checkbox"/> Outdoor				75% Load 87.4 %			
Altitude		Less than 1000m				100% Load 88.5 %			
Relative Humidity		Less than 80 %		Power Factor(p.u)		50% Load 0.750			
Ambient Temp.		40 °C MAX.				75% Load 0.825			
Duty Type		Continuous(S1)				100% Load 0.860			
Service Factor		1.15		Speed at Full Load		3515 r.p.m			
Mounting		<input type="checkbox"/> B3 <input checked="" type="checkbox"/> B5 <input type="checkbox"/> V1 <input type="checkbox"/> B3/B5		Torque		Full Load 1.0 kg.m			
Bearing		Type Anti-Friction				Locked-rotor** 190 %			
		DE/N-DE 6206ZZC3 / 6206ZZC3				Breakdown** 260 %			
		Lubricant Grease(Polyrex-EM)		Moment of Inertia (J)		Load(Max.) 1.230315789 kg·m²			
External Thrust		Not applicable				Motor 0.007 kg·m²			
Coupling Method		<input checked="" type="checkbox"/> Direct <input type="checkbox"/> V-Belt		Sound Pressure Level (No-load & mean value at 1m from motor)		65 dB(A)			
Shaft Extension		<input checked="" type="checkbox"/> Single <input type="checkbox"/> Double		Vibration		1.6 mm/sec(r.m.s)			
Terminal Box		Main <input type="checkbox"/> Steel <input checked="" type="checkbox"/> Cast Iron		Permissible number of consecutive starts		Cold 3 times			
		Aux. <input type="checkbox"/> Yes <input checked="" type="checkbox"/> No				Hot 2 times			
		Location Refer to Outline Drawing		Paint		Munsell No. Panton279C			
Application									
Area classification		Non-Hazardous							
Type of Ex-Protection		Not applicable							
Applicable Standard		KS, IEC, NEMA MG1 Part30(Vpeak)							
<b>ACCESSORIES</b>				<b>SUBMITTAL DRAWING</b>					
				Outline Dimension Drawing \ Motor Weight(Approx.)					
				B3				kg	
				B5		LM-T1113B5PLV01		48 kg	
				V1				kg	
				B3/B5				kg	
				Main T-Box Ass'y		3M-148549			
				<b>REMARK</b>					
				*.Premium Efficiency(IE3)					
				*.For use on PWM VFD 10:1VT,3:1CT@ 1.0S.F&F Temp.rise					
<b>SPARE PARTS</b>									
				Date		DSND		CHKD	
				2018-11-23		R.G. KIM		---	

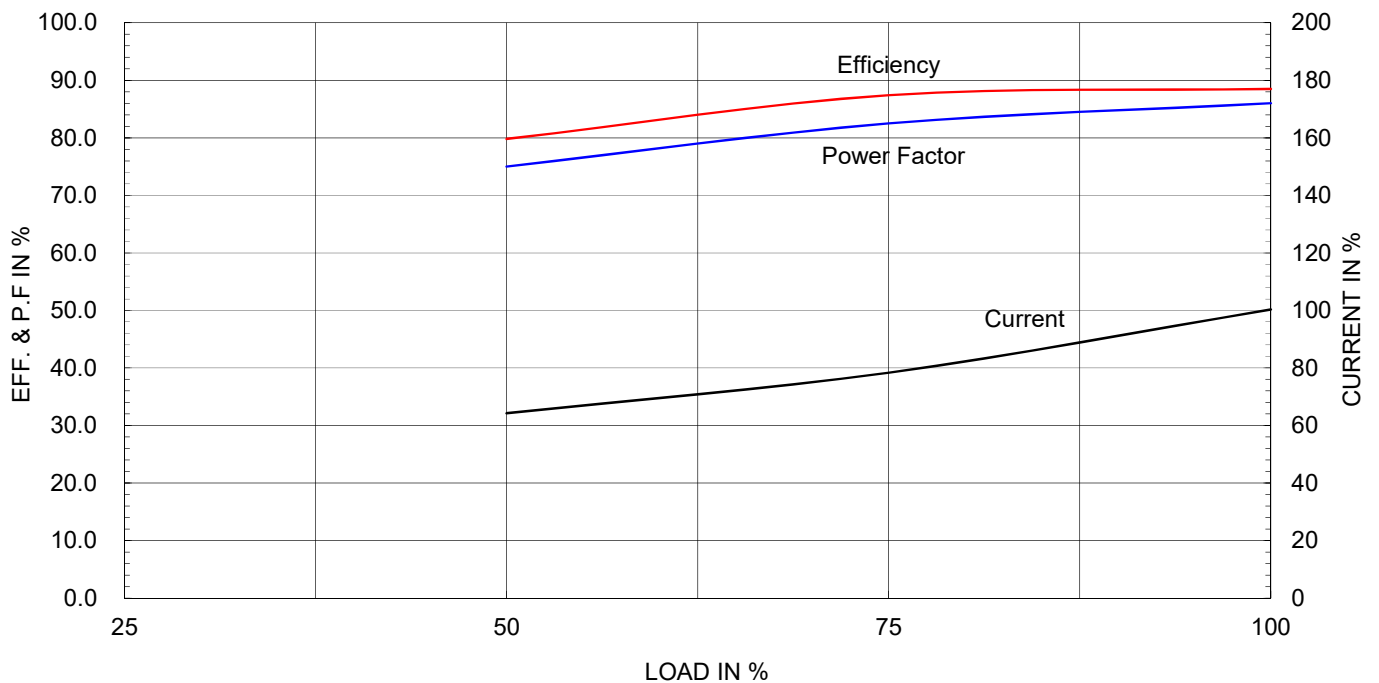
Type :	HKP-3.7/2
Full Load Torque :	1.0 Kg-m
Load moment of Inertia (J) :	1.230 Kg-m <sup>2</sup>
Motor moment of Inertia (J) :	0.007 Kg-m <sup>2</sup>

3.7kW	5HP	2P	60 Hz
Speed at Full Load : 3515 RPM			
Rated Voltage	440V	380V	220V
Full Load Current	6.4A	7.4A	12.8A

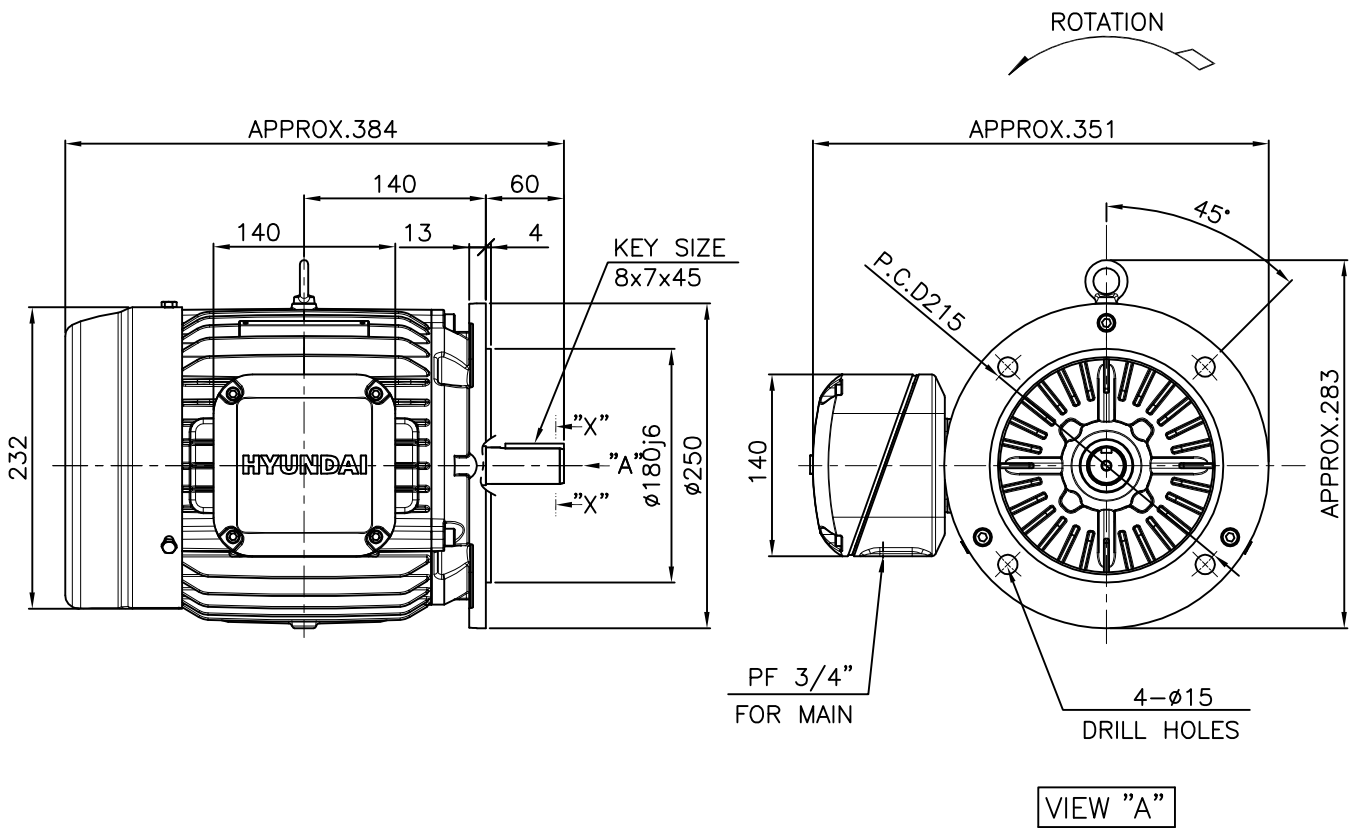
SPEED VS TORQUE & CURRENT CURVE



OUTPUT VS EFF., P.F & CURRENT CURVE



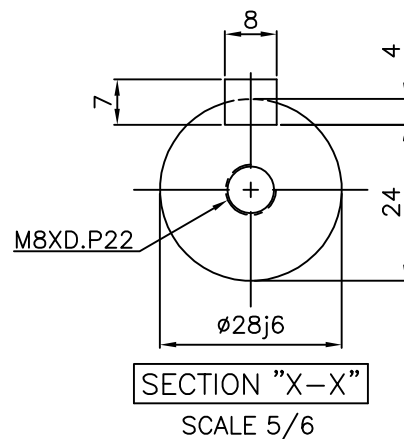
1			2		3		4			
▽	50S	REV	DATE	CONTENTS			REVD BY	CHKD BY	CHKD BY	APPD BY
▽▽	12.5S									
▽▽▽	3.2S									
▽▽▽▽	0.4S									




NOTE

1.TOLERANCE :

FLANGE HOLE	ø15	$+0.43$ $0$
RABBET DIAMETER	ø180	$+0.014$ $-0.011$
SHAFT DIAMETER	ø28	$+0.009$ $-0.004$
KEYWAY WIDTH	8	$0$ $-0.036$
KEYWAY DEPTH	4	$+0.2$ $0$
KEY WIDTH	8	$0$ $-0.036$
KEY HEIGHT	7	$0$ $-0.090$

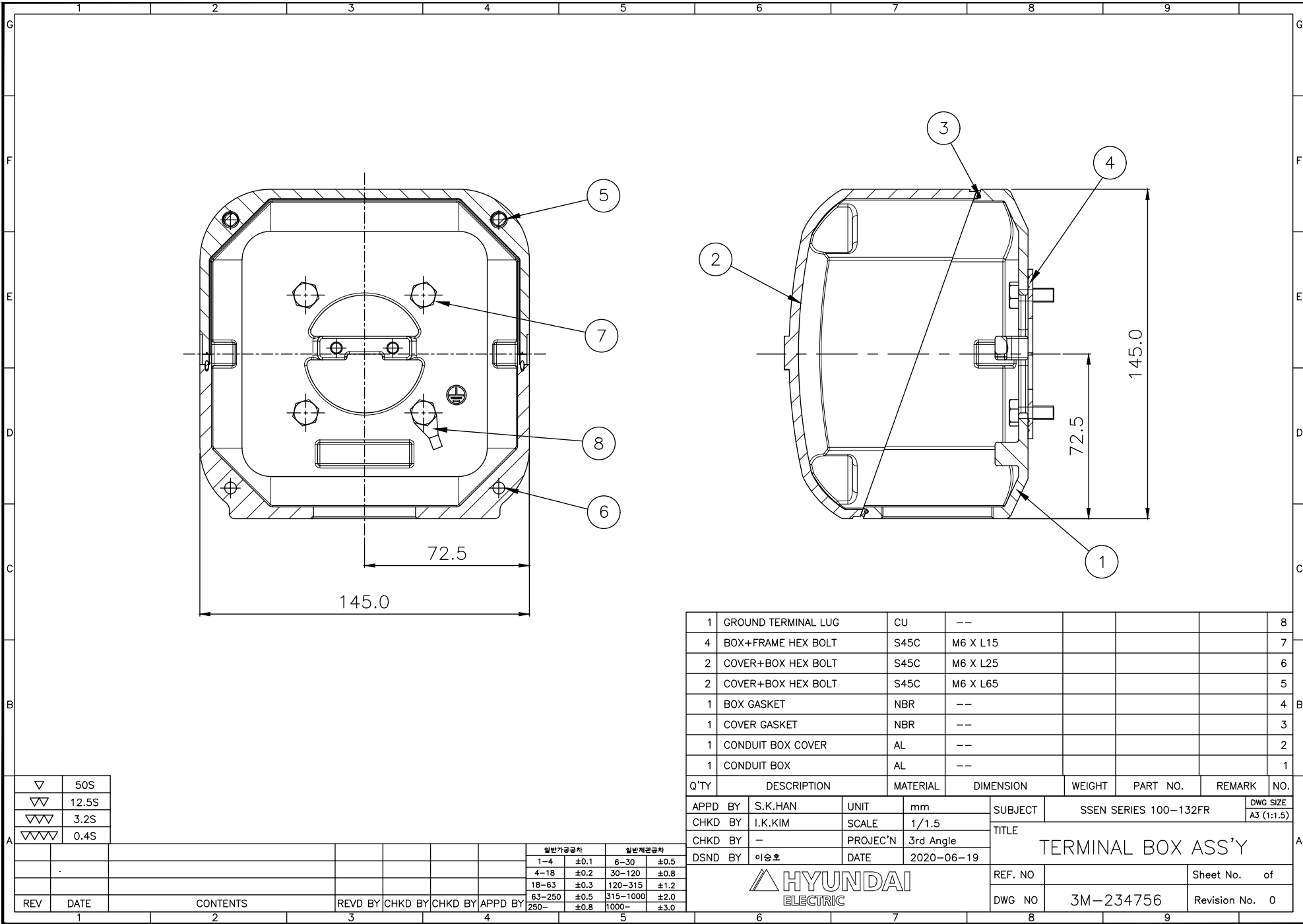


APPD BY	S.K.HAN	UNIT	mm	SUBJECT	KS Fr.112M	DWG SIZE
CHKD BY	I.K.KIM	SCALE	1/6			A4 ( 16 )
CHKD BY	S.H.LEE	PROJEC'N	3각법(3rd Angle)	TITLE	OUTLINE	
DSND BY	S.R.KIM	DATE	2020.06.19			
				REF. NO		Sheet No. of
				DWG NO	LM-T1113B5PLV01	Revision No. 0

THIS DRAWING IS PROPRIETARY TO HYUNDAI ELECTRIC. NO PART OF THIS DRAWING  
MAY BE REPRODUCED WITHOUT THE PERMISSION OF HYUNDAI ELECTRIC.

본 도면은 현대일렉트릭(주) 재산이므로  
허가없이 복사할 수 없음 (취급유의)

HYUNDAI  
ELECTRIC



▽	50S
▽▽	12.5S
▽▽▽	3.2S
▽▽▽▽	0.4S

REV	DATE	CONTENTS	REV'D BY	CHK'D BY	CHK'D BY	APPD BY
1						

일반가공공차		일반계관공차	
1~4	±0.1	6~30	±0.5
4~18	±0.2	30~120	±0.8
18~63	±0.3	120~315	±1.2
63~250	±0.5	315~1000	±2.0
250~	±0.8	1000~	±3.0

1	GROUND TERMINAL LUG	CU	--				8
4	BOX+FRAME HEX BOLT	S45C	M6 X L15				7
2	COVER+BOX HEX BOLT	S45C	M6 X L25				6
2	COVER+BOX HEX BOLT	S45C	M6 X L65				5
1	BOX GASKET	NBR	--				4
1	COVER GASKET	NBR	--				3
1	CONDUIT BOX COVER	AL	--				2
1	CONDUIT BOX	AL	--				1

Q'TY	DESCRIPTION	MATERIAL	DIMENSION	WEIGHT	PART NO.	REMARK	NO.
APPD BY	S.K.HAN	UNIT	mm	SUBJECT	SSEN SERIES 100-132FR	DWG SIZE	
CHKD BY	I.K.KIM	SCALE	1/1.5	TITLE	TERMINAL BOX ASS'Y	A3 (1:1.5)	
CHKD BY	-	PROJEC'N	3rd Angle				
DSND BY	이승호	DATE	2020-06-19				
				REF. NO		Sheet No.	of
				DWG NO	3M-234756	Revision No.	0

HYUNDAI  
ELECTRIC