

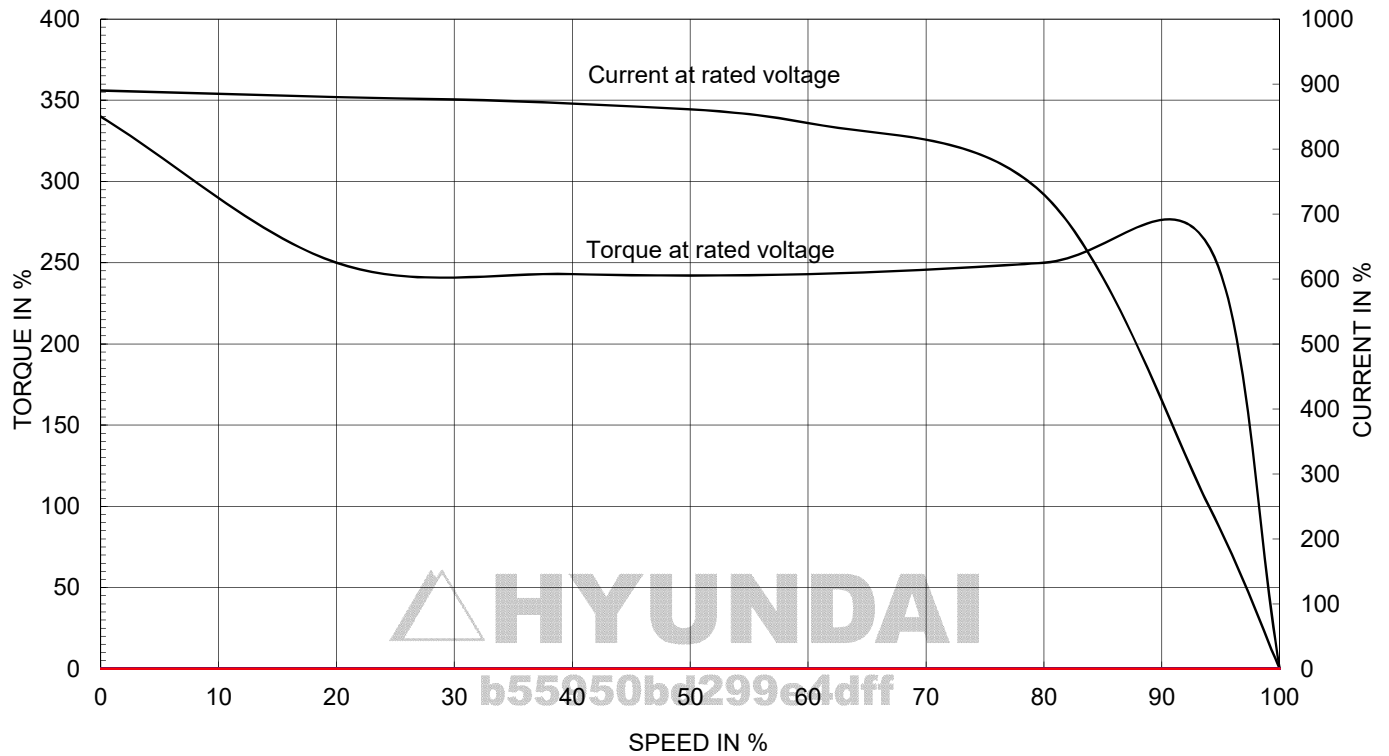
# AC INDUCTION MOTOR DATA SHEET

Model No.or RFQ No.		Item No.		Rev. No.		[ 0 ]			
Project Name		Project No.		Quantity		set			
<b>GENERAL SPECIFICATION</b>				<b>PERFORMANCE DATA</b>					
Frame Size		90L		Rated Output		2.2 kW 3 HP			
Type		HLP-2.2/2		Number of Poles		2			
Enclosure(Protection)		Totally Enclosed ( IP55 )		Rotor Type		Squirrel Cage			
Method of Cooling		IC411(FC)		Starting Method*		<input checked="" type="checkbox"/> D.O.L <input type="checkbox"/> Y-Δ			
Rated Frequency		60 Hz		Rated Voltage		440 V 380 V 220 V			
Number of Phases		3		Current		Full Load 3.9 A 4.5 A 7.8 A			
Insulation Class		<input checked="" type="checkbox"/> F <input type="checkbox"/> B <input type="checkbox"/> H		Locked-rotor**		890 % 890 % 890 %			
Temp. Rise at full load (by resistance method)				Efficiency					
at 1.0 S.F 80 °C				50% Load 83.6 %					
Motor Location <input checked="" type="checkbox"/> Indoor <input type="checkbox"/> Outdoor				75% Load 86.1 %					
Altitude Less than 1000m				100% Load 86.5 %					
Relative Humidity Less than 80 %				Power Factor(p.u)					
Ambient Temp. 40 °C MAX.				50% Load 0.735					
Duty Type Continuous(S1)				75% Load 0.815					
Service Factor 1.15				100% Load 0.860					
Mounting <input type="checkbox"/> B3 <input checked="" type="checkbox"/> B5 <input type="checkbox"/> V1 <input type="checkbox"/> B3/B5				Speed at Full Load 3485 r.p.m					
Bearing Type Anti-Friction				Torque					
DE/N-DE 6205ZZ / 6204ZZ				Full Load 0.6 kg.m					
Lubricant Grease(HIFLEX L-3)				Locked-rotor** 340 %					
External Thrust Not applicable				Breakdown** 260 %					
Coupling Method <input checked="" type="checkbox"/> Direct <input type="checkbox"/> V-Belt				Moment of Inertia (J)					
Shaft Extension <input checked="" type="checkbox"/> Single <input type="checkbox"/> Double				Load(Max.) 0.737836442 kg·m²					
Terminal Box Main <input type="checkbox"/> Steel <input checked="" type="checkbox"/> Cast Iron				Motor 0.002 kg·m²					
Aux. <input type="checkbox"/> Yes <input checked="" type="checkbox"/> No				Sound Pressure Level (No-load & mean value at 1m from motor)					
Location Refer to Outline Drawing				58 dB(A)					
Application				Vibration 1.6 mm/sec(r.m.s)					
Area classification Non-Hazardous				Permissible number of consecutive starts Cold 3 times					
Type of Ex-Protection Not applicable				Hot 2 times					
Applicable Standard KS, IEC, NEMA MG1 Part30(Vpeak)				Paint Munsell No. Pantan279C					
<b>ACCESSORIES</b>				<b>SUBMITTAL DRAWING</b>					
				Outline Dimension Drawing \ Motor Weight(Approx.)					
				B3				kg	
				B5		LM-T1095B5PLV01		30 kg	
				V1				kg	
				B3/B5				kg	
				Main T-Box Ass'y 3M-148548					
				<b>REMARK</b>					
				*.Premium Efficiency(IE3)					
				*.For use on PWM VFD 10:1VT,3:1CT@ 1.0S.F&F Temp.rise					
<b>SPARE PARTS</b>									
				Date		DSND		CHKD	
				2018-11-23		R.G. KIM		---	

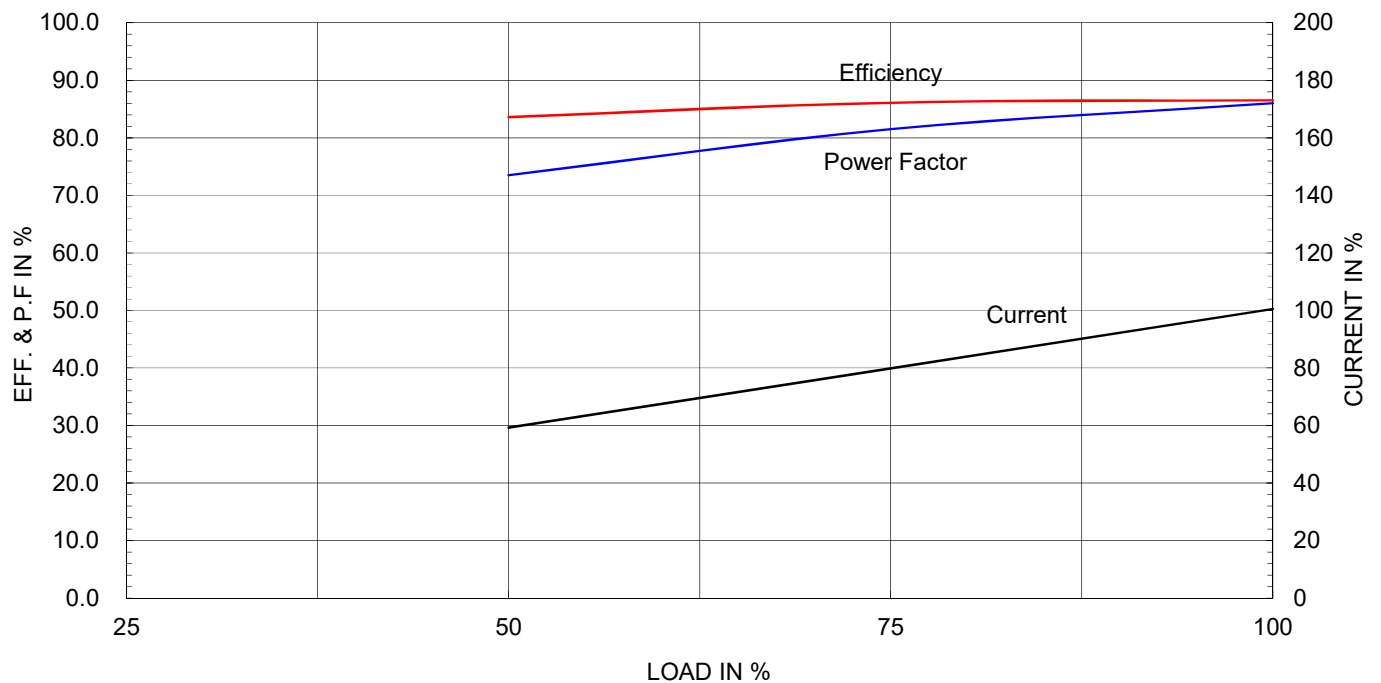
Type	:	HLP-2.2/2
Full Load Torque :		0.6 Kg-m
Load moment of Inertia (J) :		0.738 Kg-m <sup>2</sup>
Motor moment of Inertia (J) :		0.002 Kg-m <sup>2</sup>

2.2kW	3HP	2P	60 Hz
Speed at Full Load :			3485 RPM
Rated Voltage	440V	380V	220V
Full Load Current	3.9A	4.5A	7.8A

SPEED VS TORQUE & CURRENT CURVE



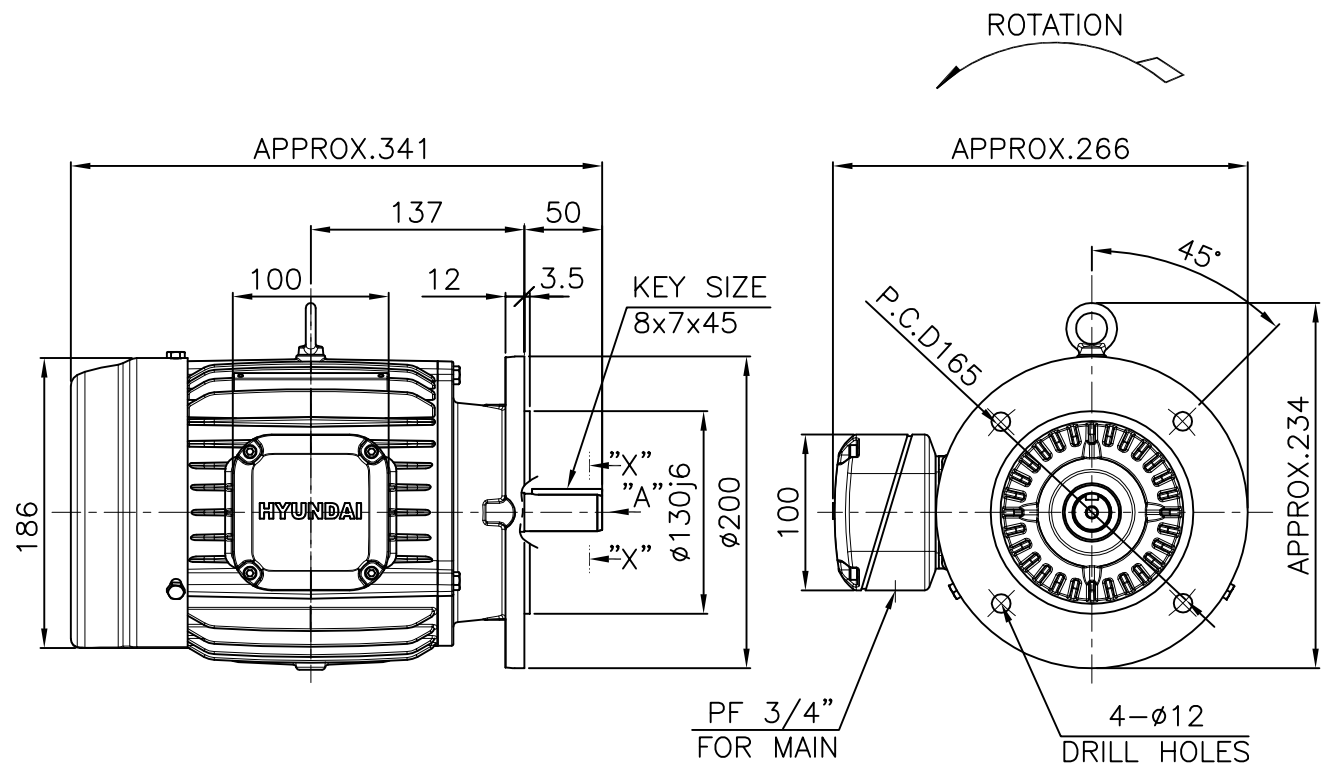
OUTPUT VS EFF., P.F & CURRENT CURVE



본 도면은 현대일렉트릭(주) 재산이므로  
허가없이 복사할 수 없음 (취급주의)

THIS DRAWING IS PROPRIETARY TO HYUNDAI ELECTRIC. NO PART OF THIS DRAWING  
MAYBE REPRODUCED WITHOUT THE PERMISSION OF HYUNDAI ELECTRIC.

1			2		3		4		
▽	50S	REV	DATE	CONTENTS		REVD BY	CHKD BY	CHKD BY	APPD BY
▽▽	12.5S								
▽▽▽	3.2S								
▽▽▽▽	0.4S								

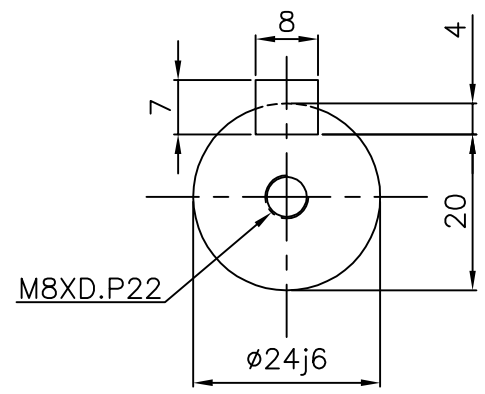


VIEW "A"

NOTE

1.TOLERANCE :

FLANGE HOLES	ø12	+0.43 0
RABBET DIAMETER	ø130	+0.014 -0.011
SHAFT DIAMETER	ø24	+0.009 -0.004
KEYWAY WIDTH	8	0 -0.036
KEYWAY DEPTH	4	+0.2 0
KEY WIDTH	8	0 -0.036
KEY HEIGHT	7	0 -0.090



SECTION "X-X"

SCALE 5/6

APPD BY	S.K.HAN	UNIT	mm	SUBJECT	KS Fr.90L	DWG SIZE
CHKD BY	I.K.KIM	SCALE	1/6	TITLE		A4 ( 16 )
CHKD BY	S.H.LEE	PROJEC'N	3각법 (3rd Angle)			
DSND BY	S.R.KIM	DATE	2020.06.19			
				REF. NO	Sheet No. of	
				DWG NO	LM-T1095B5PLV01	Revision No. 0

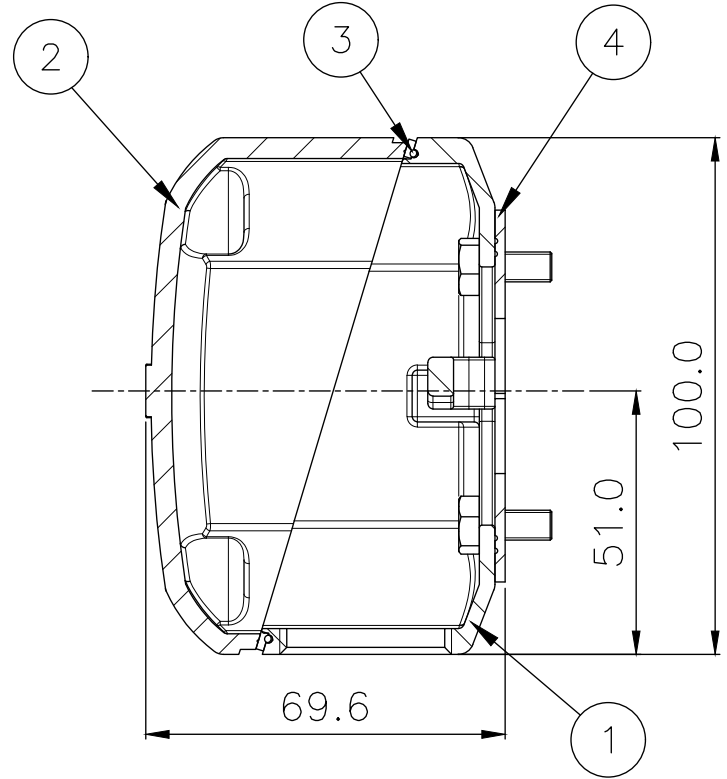
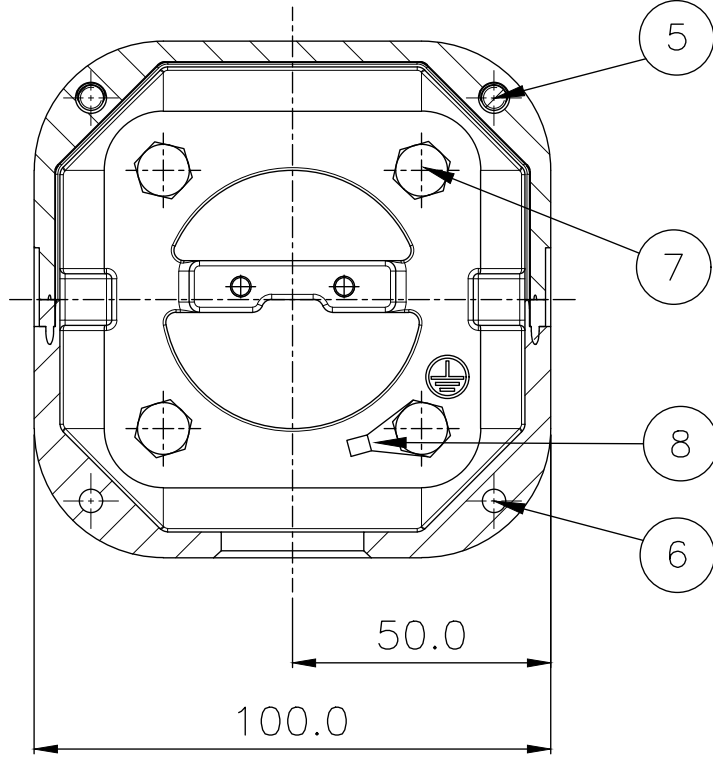
THIS DRAWING IS PROPRIETARY TO HYUNDAI ELECTRIC. NO PART OF THIS DRAWING  
MAY BE REPRODUCED WITHOUT THE PERMISSION OF HYUNDAI ELECTRIC.


본 도면은 현대일렉트릭(주) 재산이므로  
허가없이 복사할 수 없음 (취급유의)

HYUNDAI  
ELECTRIC

▽	50S
▽▽	12.5S
▽▽▽	3.2S
▽▽▽▽	0.4S

REV	DATE	CONTENTS	REV BY	CHKD BY	CHKD BY	APPD BY	일반기공표	일반계관표
							1-4 ±0.1 6-30 ±0.5	
							4-18 ±0.2 30-120 ±0.8	
							18-63 ±0.3 120-315 ±1.2	
							63-250 ±0.5 315-1000 ±2.0	
							250- ±0.8 1000- ±3.0	



1	GROUND TERMINAL LUG	CU	--					8	
4	BOX+FRAME HEX BOLT	S45C	M6 X L15					7	
2	COVER+BOX HEX BOLT	S45C	M5 X L20					6	
2	COVER+BOX HEX BOLT	S45C	M5 X L40					5	
1	BOX GASKET	NBR	--					4	
1	COVER GASKET	NBR	--					3	
1	CONDUIT BOX COVER	AL	--					2	
1	CONDUIT BOX	AL	--					1	
Q'TY	DESCRIPTION		MATERIAL	DIMENSION		WEIGHT	PART NO.	REMARK	NO.
APPD BY	S.K.HAN	UNIT	mm	SUBJECT	SSEN SERIES 90FR.				DWG SIZE A3 ( 1:1 )
CHKD BY	I.K.KIM	SCALE	1/1	TITLE  TERMINAL BOX ASS'Y					A
CHKD BY	—	PROJEC'N	3rd Angle						
DSND BY	S.H.LEE	DATE	2020-06-19						
				REF. NO				Sheet No.	of
				DWG NO				Revision No.	0
6		7		8		9			

HYUNDAI  
ELECTRIC