

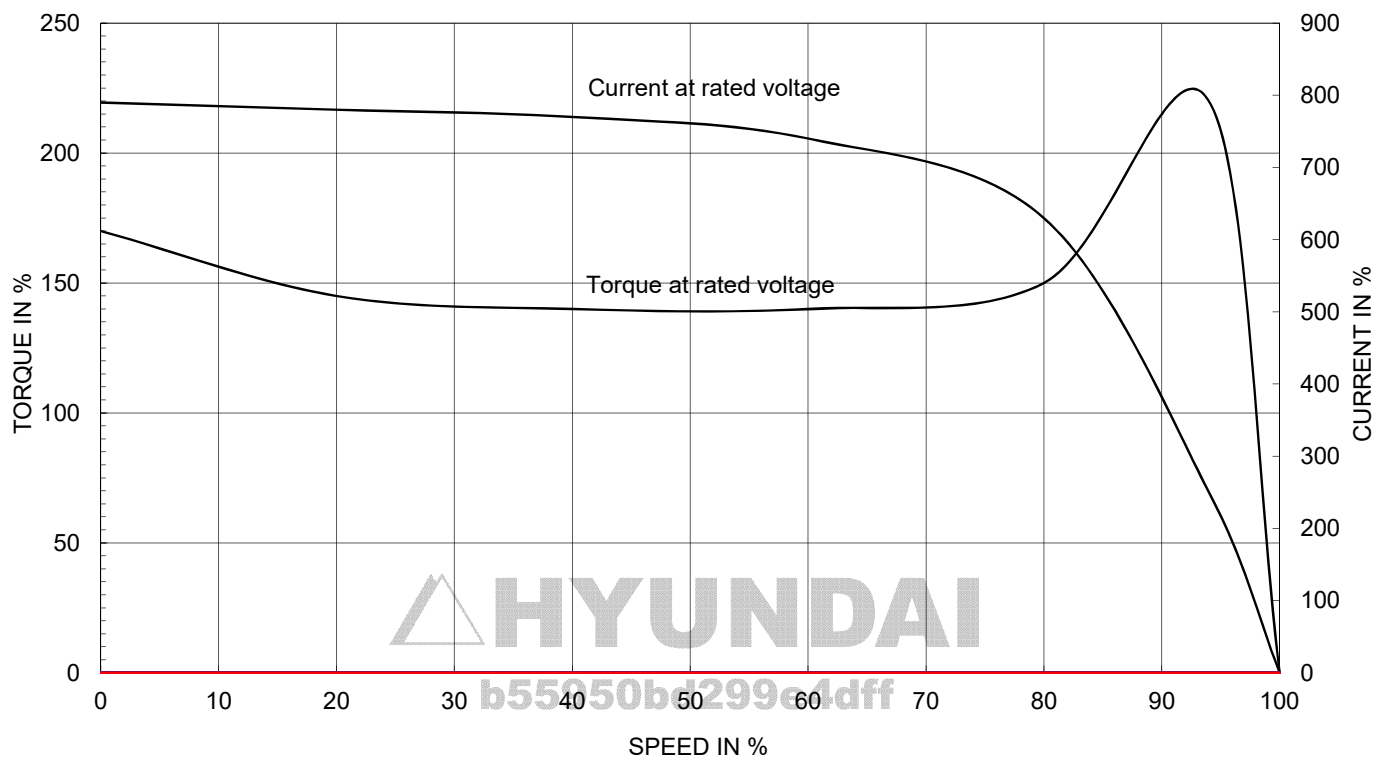
AC INDUCTION MOTOR DATA SHEET

Model No.or RFQ No.		Item No.		Rev. No.		[0]		
Project Name		Project No.		Quantity		set		
GENERAL SPECIFICATION				PERFORMANCE DATA				
Frame Size		100L		Rated Output		1.5 kW 2 HP		
Type		HLP-1.5/6		Number of Poles		6		
Enclosure(Protection)		Totally Enclosed (IP55)		Rotor Type		Squirrel Cage		
Method of Cooling		IC411(FC)		Starting Method*		<input checked="" type="checkbox"/> D.O.L <input type="checkbox"/> Y-Δ		
Rated Frequency		60 Hz		Rated Voltage		440 V 380 V 220 V		
Number of Phases		3		Current		Full Load 3.2 A 3.7 A 6.4 A		
Insulation Class		<input checked="" type="checkbox"/> F <input type="checkbox"/> B <input type="checkbox"/> H		Locked-rotor**		790 % 790 % 790 %		
Temp. Rise at full load (by resistance method)				Efficiency				
at 1.0 S.F 80 °C				50% Load 87.4 %				
Motor Location <input checked="" type="checkbox"/> Indoor <input type="checkbox"/> Outdoor				75% Load 88.7 %				
Altitude Less than 1000m				100% Load 88.5 %				
Relative Humidity Less than 80 %				Power Factor(p.u)				
Ambient Temp. 40 °C MAX.				50% Load 0.500				
Duty Type Continuous(S1)				75% Load 0.620				
Service Factor 1.15				100% Load 0.700				
Mounting <input type="checkbox"/> B3 <input checked="" type="checkbox"/> B5 <input type="checkbox"/> V1 <input type="checkbox"/> B3/B5				Speed at Full Load 1155 r.p.m				
Bearing Type Anti-Friction				Torque				
DE/N-DE 6206ZZC3 / 6206ZZC3				Full Load 1.3 kg.m				
Lubricant Grease(SML4)				Locked-rotor** 170 %				
External Thrust Not applicable				Breakdown** 220 %				
Coupling Method <input checked="" type="checkbox"/> Direct <input type="checkbox"/> V-Belt				Moment of Inertia (J)				
Shaft Extension <input checked="" type="checkbox"/> Single <input type="checkbox"/> Double				Load(Max.) 3.162337662 kg·m²				
Terminal Box Main <input type="checkbox"/> Steel <input checked="" type="checkbox"/> Cast Iron				Motor 0.009 kg·m²				
Aux. <input type="checkbox"/> Yes <input checked="" type="checkbox"/> No				Sound Pressure Level (No-load & mean value at 1m from motor)				
Location Refer to Outline Drawing				53 dB(A)				
Application				Vibration 1.6 mm/sec(r.m.s)				
Area classification Non-Hazardous				Permissible number of consecutive starts Cold 3 times				
Type of Ex-Protection Not applicable				Hot 2 times				
Applicable Standard KS, IEC, NEMA MG1 Part30(Vpeak)				Paint Munsell No. Pantan279C				
ACCESSORIES				SUBMITTAL DRAWING				
				Outline Dimension Drawing \ Motor Weight(Approx.)				
				B3			kg	
				B5		LM-T1105B5PLV01	41 kg	
				V1			kg	
				B3/B5			kg	
				Main T-Box Ass'y 3M-148549				
				REMARK				
				*.Premium Efficiency(IE3)				
				*.For use on PWM VFD 10:1VT,3:1CT@ 1.0S.F&F Temp.rise				
SPARE PARTS								
				Date	DSND	CHKD	CHKD	APPD
				2018-11-23	R.G. KIM	---	O.J. KIM	S.K.HAN

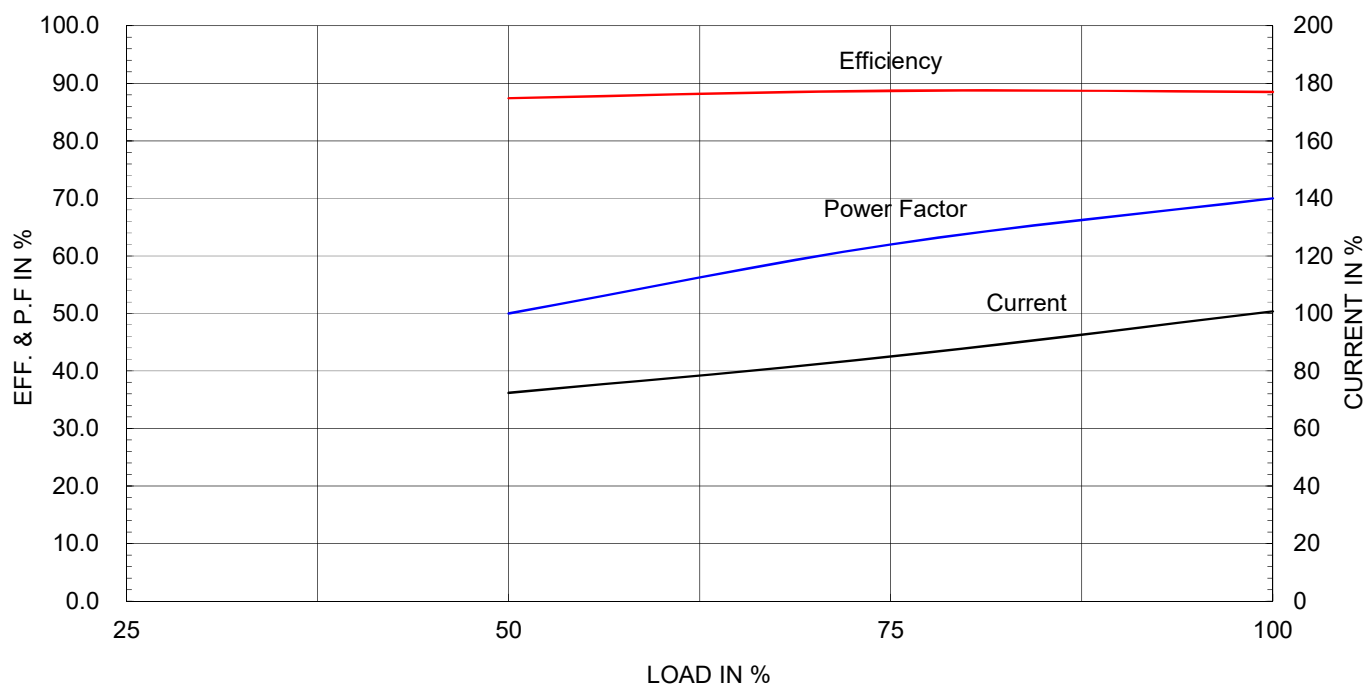
Type :	HLP-1.5/6
Full Load Torque :	1.3 Kg-m
Load moment of Inertia (J) :	3.162 Kg-m ²
Motor moment of Inertia (J) :	0.009 Kg-m ²

1.5kW	2HP	6P	60 Hz
Speed at Full Load : 1155 RPM			
Rated Voltage	440V	380V	220V
Full Load Current	3.2A	3.7A	6.4A

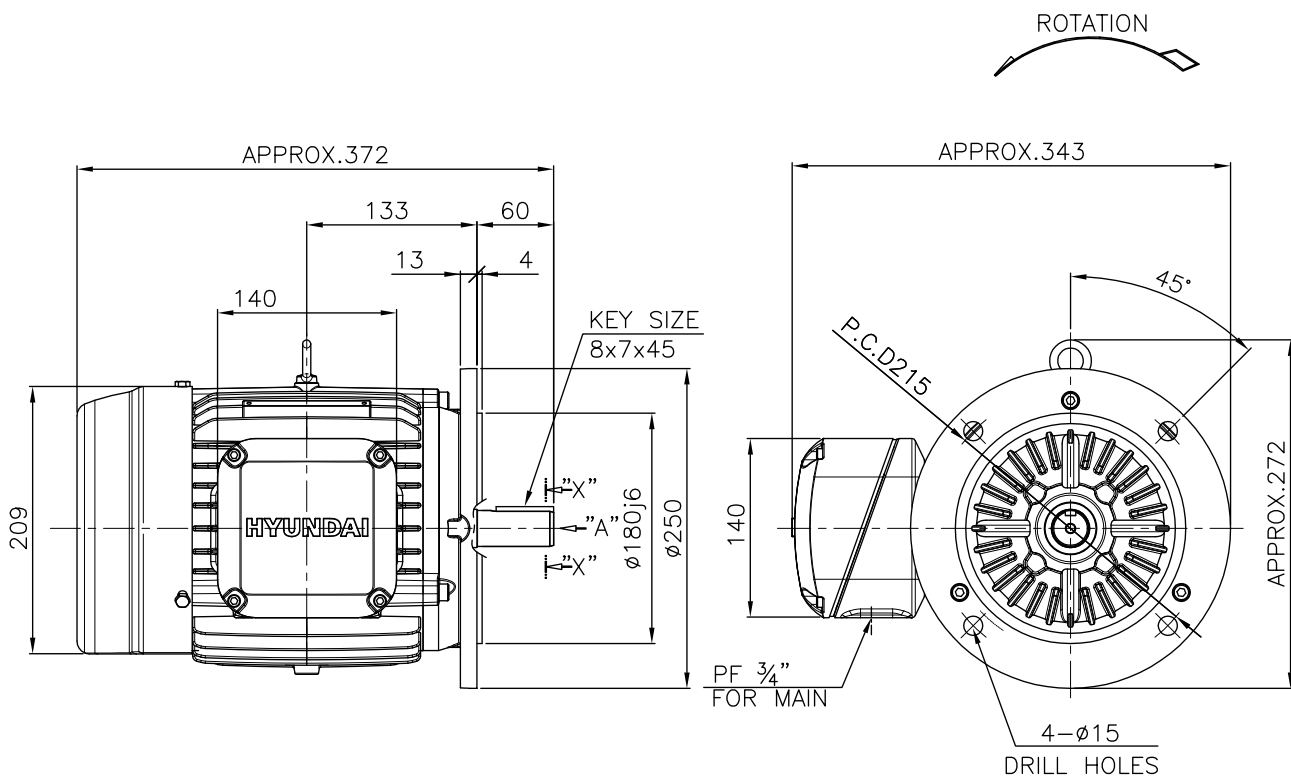
SPEED VS TORQUE & CURRENT CURVE



OUTPUT VS EFF., P.F & CURRENT CURVE



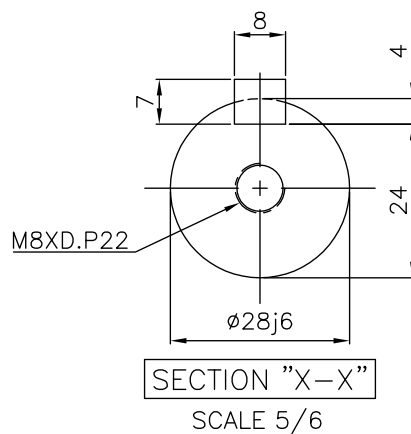
1			2		3		4		
▽	50S	REV	DATE	CONTENTS		REVD BY	CHKD BY	CHKD BY	APPD BY
▽▽	12.5S								
▽▽▽	3.2S								
▽▽▽▽	0.4S								



NOTE

1.TOLERANCE :

FLANGE HOLE	ø15	+0.43 0
RABBET DIAMETER	ø180	+0.014 -0.011
SHAFT DIAMETER	ø28	+0.009 -0.004
KEYWAY WIDTH	8	0 -0.036
KEYWAY DEPTH	4	+0.2 0
KEY WIDTH	8	0 -0.036
KEY HEIGHT	7	0 -0.090



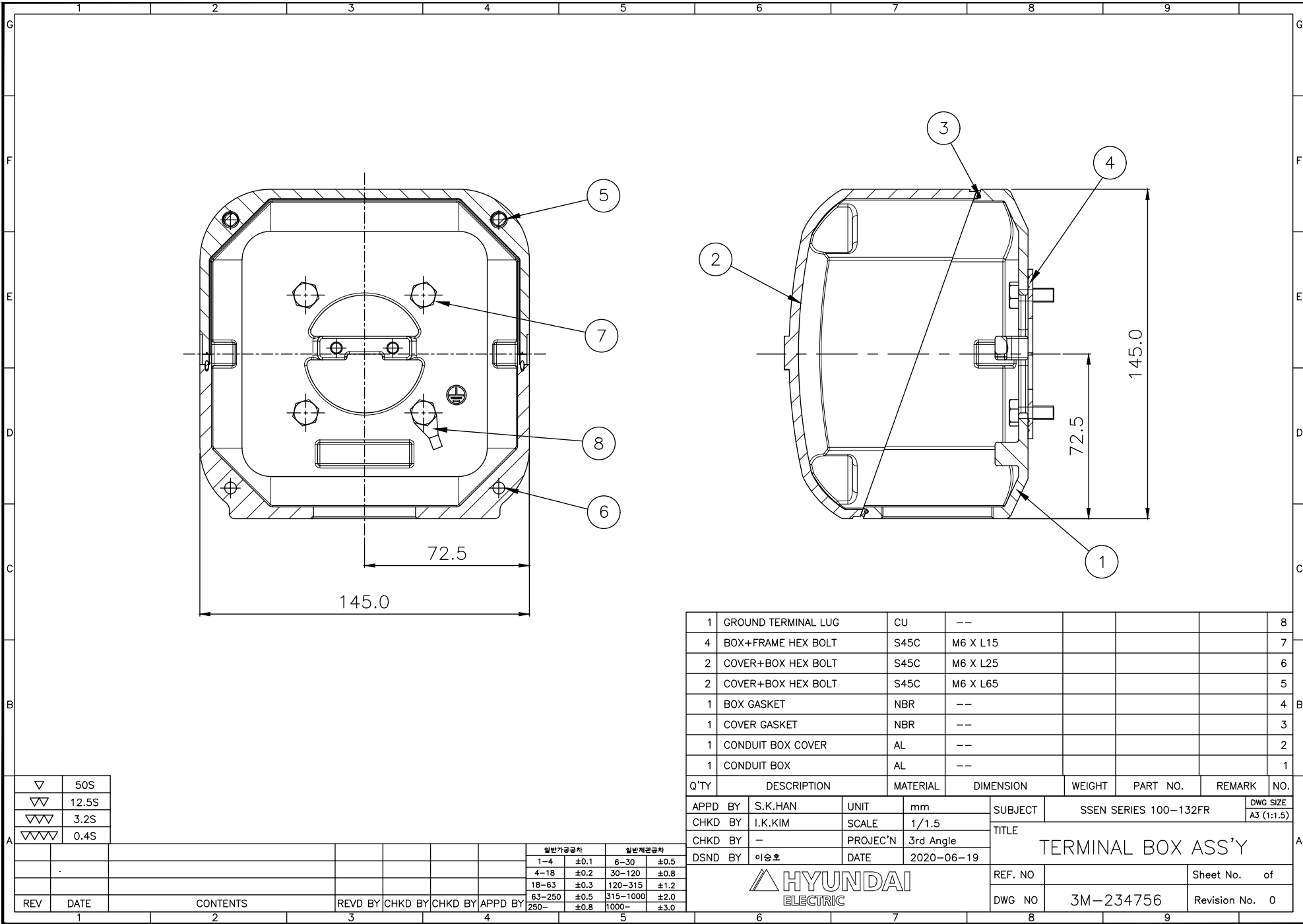
SCALE 5/6

APPD BY	S.K.HAN	UNIT	mm	SUBJECT	KS Fr.100L	DWG SIZE
CHKD BY	S.Y.KIM	SCALE	1/6	TITLE		A4 (1:6)
CHKD BY	I.K.KIM	PROJEC'N	3각법 (3rd Angle)			
DSND BY	S.H.LEE	DATE	2020.06.19			
				REF. NO		Sheet No. of
				DWG NO	LM-T1105B5PLV01	Revision No. 0

THIS DRAWING IS PROPRIETARY TO HYUNDAI ELECTRIC. NO PART OF THIS DRAWING
MAY BE REPRODUCED WITHOUT THE PERMISSION OF HYUNDAI ELECTRIC.

본 도면은 현대일렉트릭(주) 재산이므로
허가없이 복사할 수 없음 (취급유의)


HYUNDAI
ELECTRIC



▽	50S
▽▽	12.5S
▽▽▽	3.2S
▽▽▽▽	0.4S

REV	DATE	CONTENTS	REVD BY	CHKD BY	CHKD BY	APPD BY
1						

일반가공공차		일반계관공차	
1~4	±0.1	6~30	±0.5
4~18	±0.2	30~120	±0.8
18~63	±0.3	120~315	±1.2
63~250	±0.5	315~1000	±2.0
250~	±0.8	1000~	±3.0

1	GROUND TERMINAL LUG	CU	--				8	
4	BOX+FRAME HEX BOLT	S45C	M6 X L15				7	
2	COVER+BOX HEX BOLT	S45C	M6 X L25				6	
2	COVER+BOX HEX BOLT	S45C	M6 X L65				5	
1	BOX GASKET	NBR	--				4	
1	COVER GASKET	NBR	--				3	
1	CONDUIT BOX COVER	AL	--				2	
1	CONDUIT BOX	AL	--				1	
Q'TY	DESCRIPTION	MATERIAL	DIMENSION		WEIGHT	PART NO.	REMARK	NO.
APPD BY	S.K.HAN	UNIT	mm	SUBJECT	SSEN SERIES 100-132FR			DWG SIZE A3 (1:1.5)
CHKD BY	I.K.KIM	SCALE	1/1.5	TITLE TERMINAL BOX ASS'Y				
CHKD BY	-	PROJEC'N	3rd Angle					
DSND BY	이승호	DATE	2020-06-19					
				REF. NO			Sheet No.	of
				DWG NO	3M-234756		Revision No.	0
6		7		8		9		

HYUNDAI
ELECTRIC