

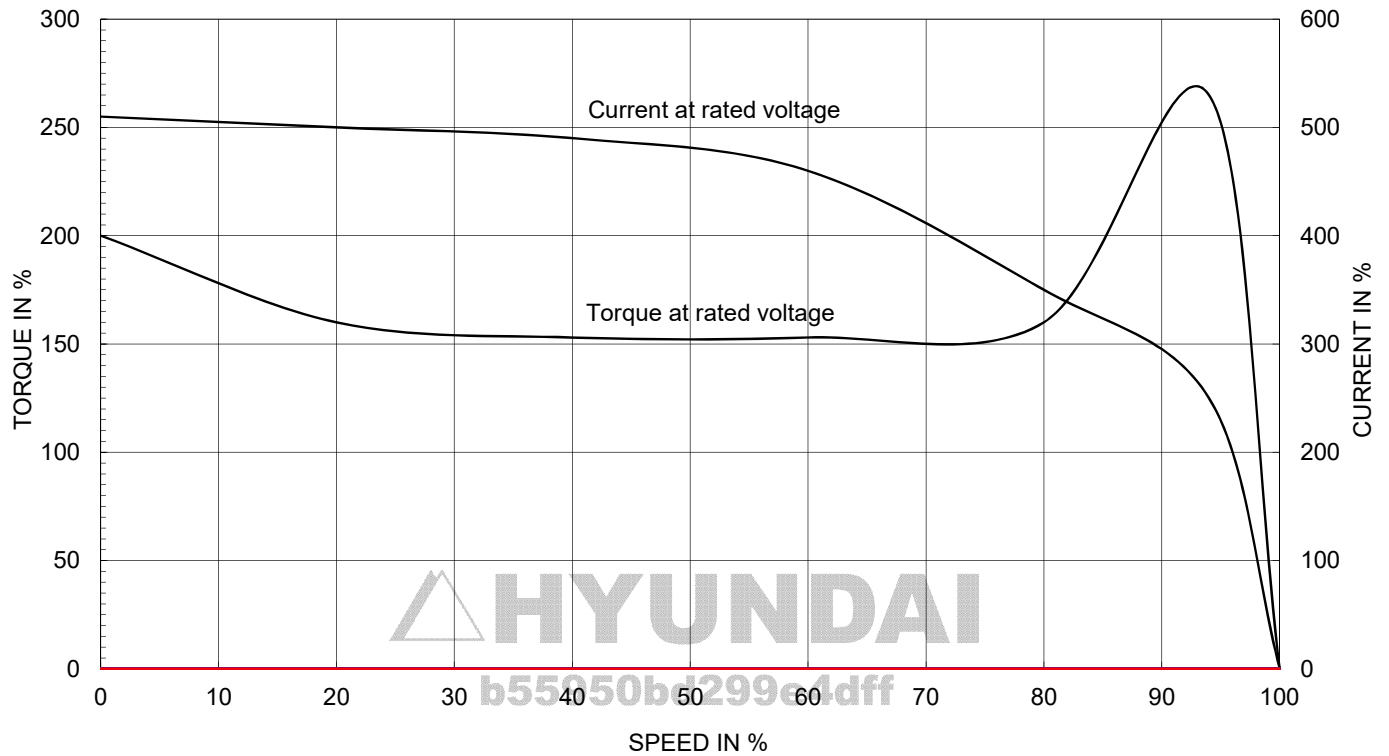
# AC INDUCTION MOTOR DATA SHEET

Model No.or RFQ No.		Item No.		Rev. No.		[ 0 ]			
Project Name		Project No.		Quantity		set			
<b>GENERAL SPECIFICATION</b>				<b>PERFORMANCE DATA</b>					
Frame Size		90L		Rated Output		0.75 kW 1 HP			
Type		HLP-0.75/6		Number of Poles		6			
Enclosure(Protection)		Totally Enclosed ( IP55 )		Rotor Type		Squirrel Cage			
Method of Cooling		IC411(FC)		Starting Method*		<input checked="" type="checkbox"/> D.O.L <input type="checkbox"/> Y-Δ			
Rated Frequency		60 Hz		Rated Voltage		440 V 380 V 220 V			
Number of Phases		3		Current		Full Load 1.7 A 2.0 A 3.4 A			
Insulation Class		<input checked="" type="checkbox"/> F <input type="checkbox"/> B <input type="checkbox"/> H		Locked-rotor**		510 % 510 % 510 %			
Temp. Rise at full load (by resistance method)		at 1.0 S.F 80 °C		Efficiency		50% Load 79.5 %			
Motor Location		<input checked="" type="checkbox"/> Indoor <input type="checkbox"/> Outdoor				75% Load 82.5 %			
Altitude		Less than 1000m				100% Load 82.5 %			
Relative Humidity		Less than 80 %		Power Factor(p.u)		50% Load 0.488			
Ambient Temp.		40 °C MAX.				75% Load 0.628			
Duty Type		Continuous(S1)				100% Load 0.694			
Service Factor		1.15		Speed at Full Load		1140 r.p.m			
Mounting		<input type="checkbox"/> B3 <input checked="" type="checkbox"/> B5 <input type="checkbox"/> V1 <input type="checkbox"/> B3/B5		Torque		Full Load 0.6 kg.m			
Bearing		Type Anti-Friction				Locked-rotor** 200 %			
		DE/N-DE 6205ZZ / 6204ZZ				Breakdown** 265 %			
		Lubricant Grease(HIFLEX L-3)		Moment of Inertia (J)		Load(Max.) 1.601973684 kg·m²			
External Thrust		Not applicable				Motor 0.003 kg·m²			
Coupling Method		<input checked="" type="checkbox"/> Direct <input type="checkbox"/> V-Belt		Sound Pressure Level (No-load & mean value at 1m from motor)		67 dB(A)			
Shaft Extension		<input checked="" type="checkbox"/> Single <input type="checkbox"/> Double		Vibration		1.6 mm/sec(r.m.s)			
Terminal Box		Main <input type="checkbox"/> Steel <input checked="" type="checkbox"/> Cast Iron		Permissible number of consecutive starts		Cold 3 times			
		Aux. <input type="checkbox"/> Yes <input checked="" type="checkbox"/> No				Hot 2 times			
		Location Refer to Outline Drawing		Paint		Munsell No. Panton279C			
Application									
Area classification		Non-Hazardous							
Type of Ex-Protection		Not applicable							
Applicable Standard		KS, IEC, NEMA MG1 Part30(Vpeak)							
<b>ACCESSORIES</b>				<b>SUBMITTAL DRAWING</b>					
				Outline Dimension Drawing \ Motor Weight(Approx.)					
				B3				kg	
				B5		LM-T1095B5PLV01		30 kg	
				V1				kg	
				B3/B5				kg	
				Main T-Box Ass'y		3M-148548			
				<b>REMARK</b>					
				*.Premium Efficiency(IE3)					
				*.For use on PWM VFD 10:1VT,3:1CT@ 1.0S.F&F Temp.rise					
<b>SPARE PARTS</b>									
				Date		DSND		CHKD	
				2018-11-23		R.G. KIM		---	

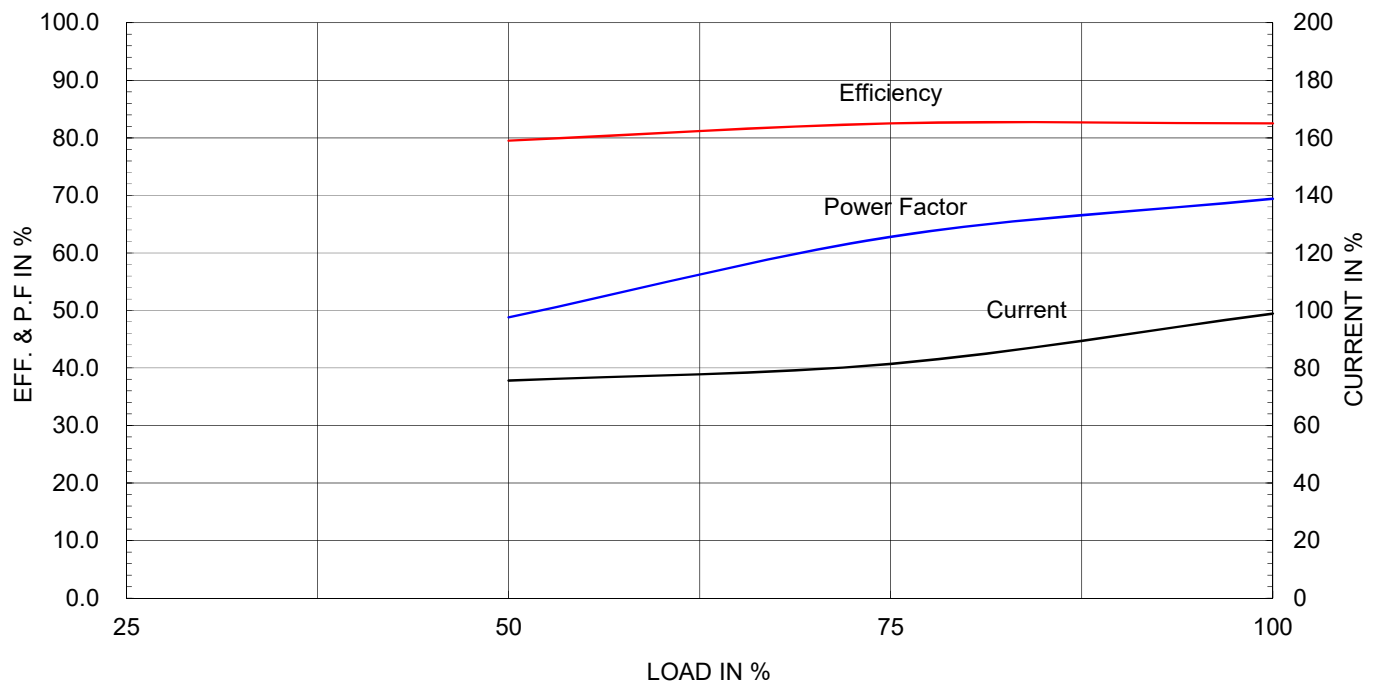
Type	:	HLP-0.75/6
Full Load Torque :	0.6	Kg-m
Load moment of Inertia (J) :	1.602	Kg-m <sup>2</sup>
Motor moment of Inertia (J) :	0.0030	Kg-m <sup>2</sup>

0.75kW	1HP	6P	60 Hz
Speed at Full Load : 1140 RPM			
Rated Voltage	440V	380V	220V
Full Load Current	1.7A	2.0A	3.4A

SPEED VS TORQUE & CURRENT CURVE



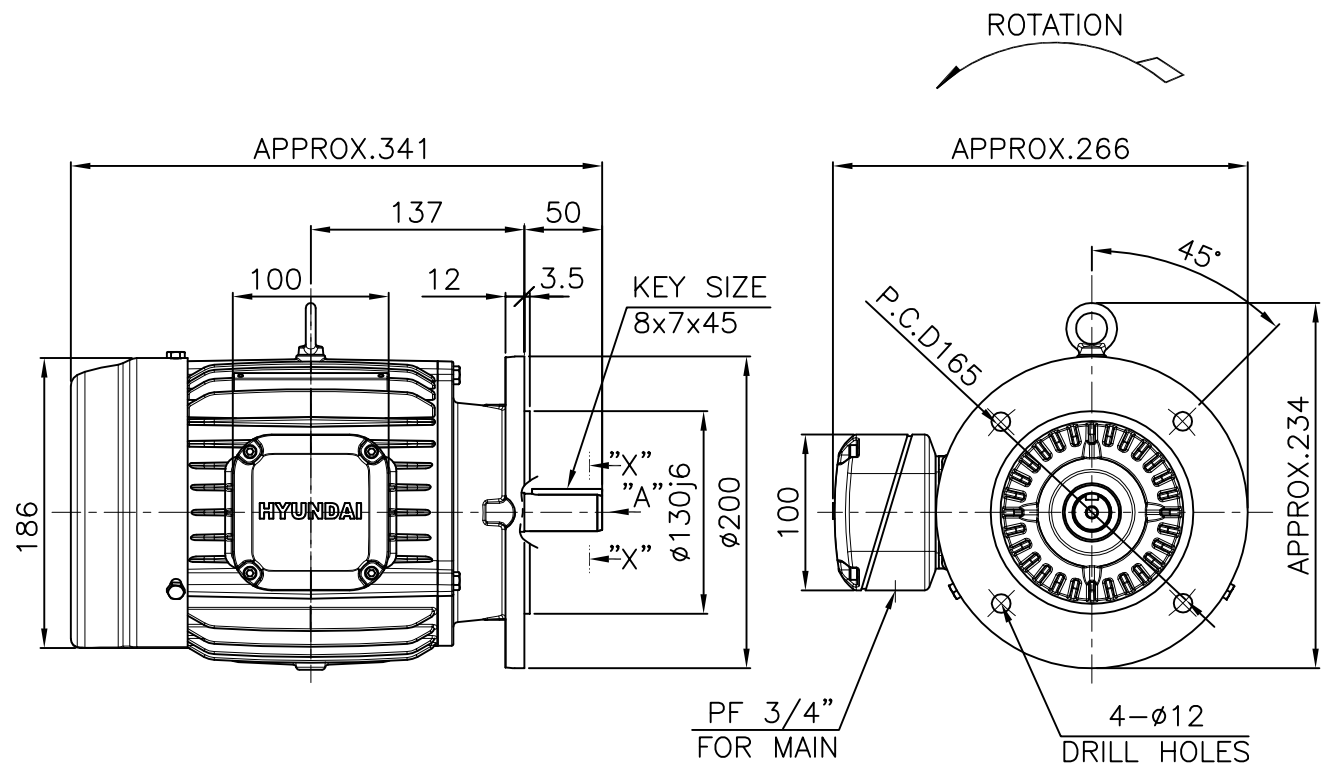
OUTPUT VS EFF., P.F & CURRENT CURVE



본 도면은 현대일렉트릭(주) 재산이므로  
허가없이 복사할 수 없음 (취급주의)

THIS DRAWING IS PROPRIETARY TO HYUNDAI ELECTRIC. NO PART OF THIS DRAWING  
MAYBE REPRODUCED WITHOUT THE PERMISSION OF HYUNDAI ELECTRIC.

1			2		3		4		
▽	50S	REV	DATE	CONTENTS		REVD BY	CHKD BY	CHKD BY	APPD BY
▽▽	12.5S								
▽▽▽	3.2S								
▽▽▽▽	0.4S								

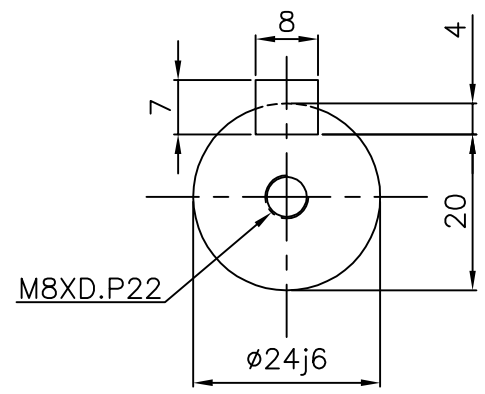


VIEW "A"

NOTE

1.TOLERANCE :

FLANGE HOLES	$\phi 12$	$+0.43$ $0$
RABBET DIAMETER	$\phi 130$	$+0.014$ $-0.011$
SHAFT DIAMETER	$\phi 24$	$+0.009$ $-0.004$
KEYWAY WIDTH	8	$0$ $-0.036$
KEYWAY DEPTH	4	$+0.2$ $0$
KEY WIDTH	8	$0$ $-0.036$
KEY HEIGHT	7	$0$ $-0.090$



SCALE 5/6

APPD BY	S.K.HAN	UNIT	mm	SUBJECT	KS Fr.90L	DWG SIZE	A4 ( 1/6 )
CHKD BY	I.K.KIM	SCALE	1/6	TITLE OUTLINE			
CHKD BY	S.H.LEE	PROJEC'N	3각법 (3rd Angle)				
DSND BY	S.R.KIM	DATE	2020.06.19				
				REF. NO		Sheet No.	of
				DWG NO	LM-T1095B5PLV01	Revision No.	0

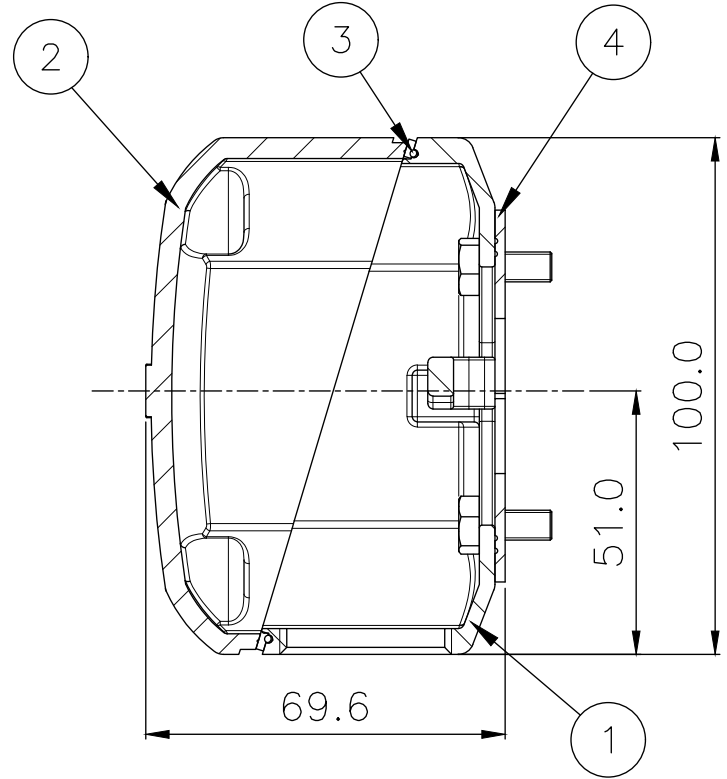
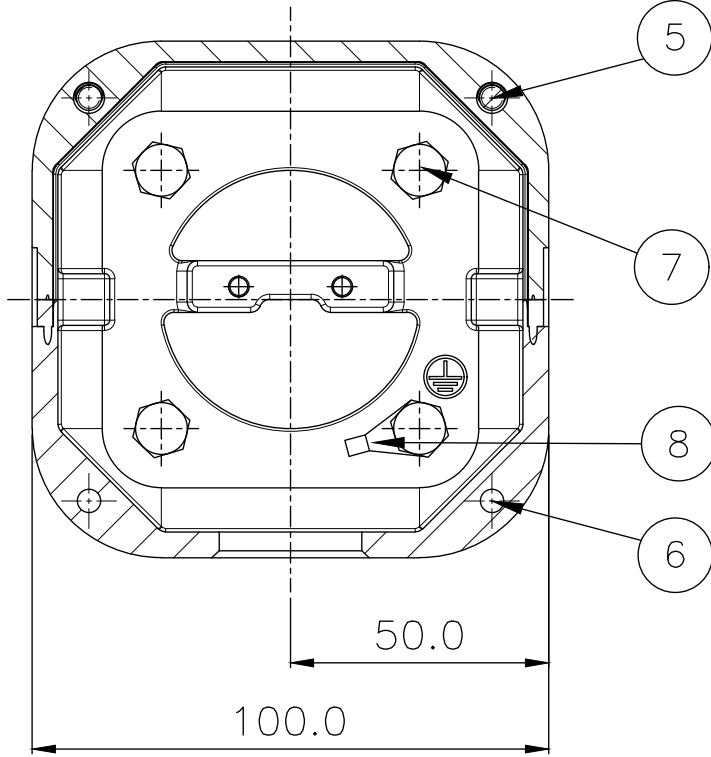
THIS DRAWING IS PROPRIETARY TO HYUNDAI ELECTRIC. NO PART OF THIS DRAWING  
MAY BE REPRODUCED WITHOUT THE PERMISSION OF HYUNDAI ELECTRIC.


본 도면은 현대일렉트릭(주) 재산이므로  
허가없이 복사할 수 없음 (취급유의)

HYUNDAI  
ELECTRIC

▽	50S
▽▽	12.5S
▽▽▽	3.2S
▽▽▽▽	0.4S

REV	DATE	CONTENTS	REV'D BY	CHK'D BY	CHK'D BY	APPD BY	일반기공용차	일반계관공차
							1-4 ±0.1 6-30 ±0.5	
							4-18 ±0.2 30-120 ±0.8	
							18-63 ±0.3 120-315 ±1.2	
							63-250 ±0.5 315-1000 ±2.0	
							250- ±0.8 1000- ±3.0	



1	GROUND TERMINAL LUG	CU	--					8	
4	BOX+FRAME HEX BOLT	S45C	M6 X L15					7	
2	COVER+BOX HEX BOLT	S45C	M5 X L20					6	
2	COVER+BOX HEX BOLT	S45C	M5 X L40					5	
1	BOX GASKET	NBR	--					4	
1	COVER GASKET	NBR	--					3	
1	CONDUIT BOX COVER	AL	--					2	
1	CONDUIT BOX	AL	--					1	
Q'TY	DESCRIPTION		MATERIAL	DIMENSION		WEIGHT	PART NO.	REMARK	NO.
APPD BY	S.K.HAN	UNIT	mm	SUBJECT	SSEN SERIES 90FR.				DWG SIZE A3 ( 1:1 )
CHKD BY	I.K.KIM	SCALE	1/1	TITLE  TERMINAL BOX ASS'Y					A
CHKD BY	—	PROJEC'N	3rd Angle						
DSND BY	S.H.LEE	DATE	2020-06-19						
				REF. NO				Sheet No.	of
				DWG NO				Revision No.	0
6		7		8		9			

HYUNDAI  
ELECTRIC