

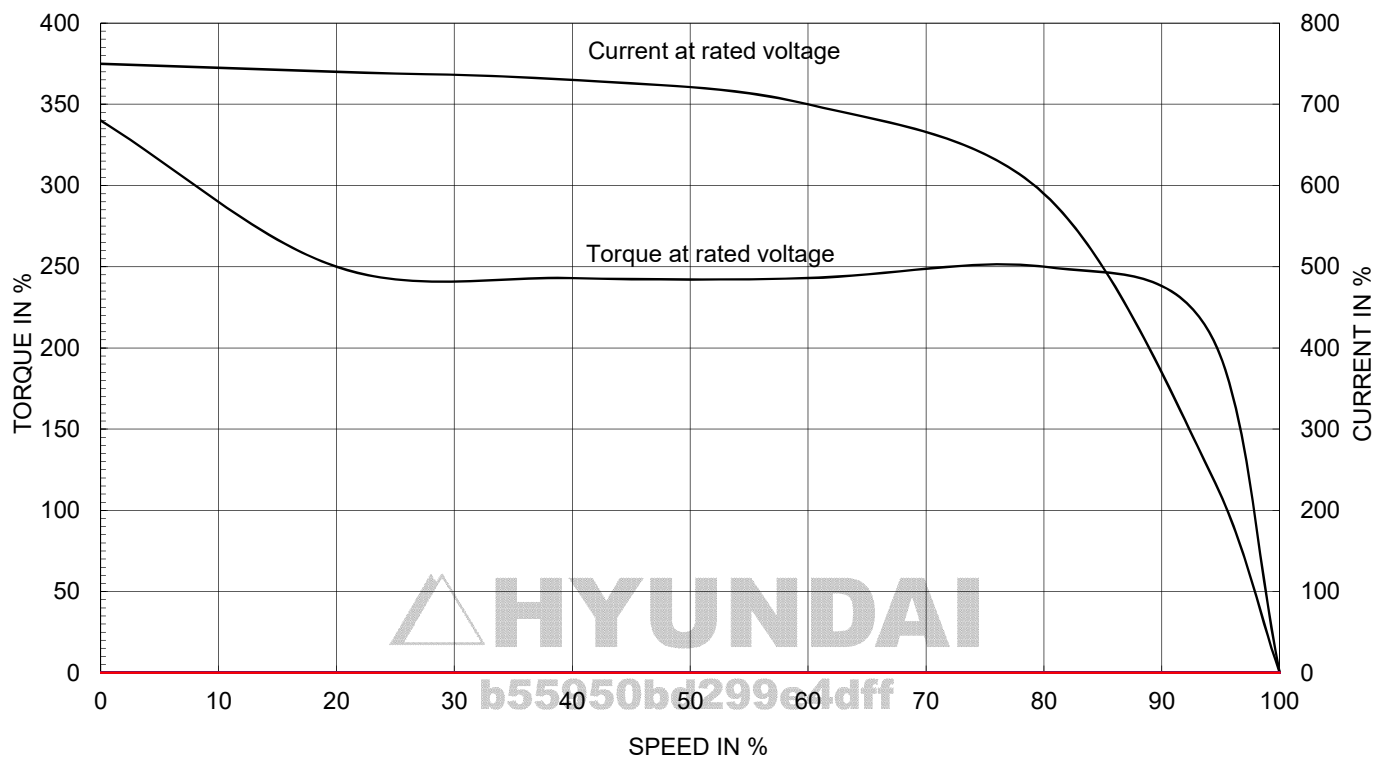
AC INDUCTION MOTOR DATA SHEET

Model No.or RFQ No.		Item No.		Rev. No.		[0]			
Project Name		Project No.		Quantity		set			
GENERAL SPECIFICATION				PERFORMANCE DATA					
Frame Size		80M		Rated Output		0.75 kW 1 HP			
Type		HLP-0.75/2		Number of Poles		2			
Enclosure(Protection)		Totally Enclosed (IP55)		Rotor Type		Squirrel Cage			
Method of Cooling		IC411(FC)		Starting Method*		<input checked="" type="checkbox"/> D.O.L <input type="checkbox"/> Y-Δ			
Rated Frequency		60 Hz		Rated Voltage		440 V 380 V 220 V			
Number of Phases		3		Current		Full Load 1.6 A 1.8 A 3.1 A			
Insulation Class		<input checked="" type="checkbox"/> F <input type="checkbox"/> B <input type="checkbox"/> H		Locked-rotor**		750 % 750 % 750 %			
Temp. Rise at full load (by resistance method)		at 1.0 S.F 80 °C		Efficiency		50% Load 74.8 %			
Motor Location		<input checked="" type="checkbox"/> Indoor <input type="checkbox"/> Outdoor				75% Load 77.0 %			
Altitude		Less than 1000m				100% Load 77.0 %			
Relative Humidity		Less than 80 %		Power Factor(p.u)		50% Load 0.610			
Ambient Temp.		40 °C MAX.				75% Load 0.740			
Duty Type		Continuous(S1)				100% Load 0.820			
Service Factor		1.15		Speed at Full Load		3435 r.p.m			
Mounting		<input type="checkbox"/> B3 <input checked="" type="checkbox"/> B5 <input type="checkbox"/> V1 <input type="checkbox"/> B3/B5		Torque		Full Load 0.2 kg.m			
Bearing		Type Anti-Friction				Locked-rotor** 340 %			
		DE/N-DE 6204ZZ / 6203ZZ				Breakdown** 210 %			
		Lubricant Grease(HIFLEX L-3)		Moment of Inertia (J)		Load(Max.) 0.255196507 kg·m²			
External Thrust		Not applicable				Motor 0.001 kg·m²			
Coupling Method		<input checked="" type="checkbox"/> Direct <input type="checkbox"/> V-Belt		Sound Pressure Level (No-load & mean value at 1m from motor)		69 dB(A)			
Shaft Extension		<input checked="" type="checkbox"/> Single <input type="checkbox"/> Double		Vibration		1.6 mm/sec(r.m.s)			
Terminal Box		Main <input type="checkbox"/> Steel <input checked="" type="checkbox"/> Cast Iron		Permissible number of consecutive starts		Cold 3 times			
		Aux. <input type="checkbox"/> Yes <input checked="" type="checkbox"/> No				Hot 2 times			
		Location Refer to Outline Drawing		Paint		Munsell No. Panton279C			
Application									
Area classification		Non-Hazardous							
Type of Ex-Protection		Not applicable							
Applicable Standard		KS, IEC, NEMA MG1 Part30(Vpeak)							
ACCESSORIES				SUBMITTAL DRAWING					
				Outline Dimension Drawing \ Motor Weight(Approx.)					
				B3				kg	
				B5		LM-A1080B5P3V01		18 kg	
				V1				kg	
				B3/B5				kg	
				Main T-Box Ass'y		3M-148548			
				REMARK					
				*.Premium Efficiency(IE3)					
				*.For use on PWM VFD 10:1VT,3:1CT@ 1.0S.F&F Temp.rise					
SPARE PARTS									
				Date		DSND		CHKD	
				2018-11-23		R.G. KIM		---	

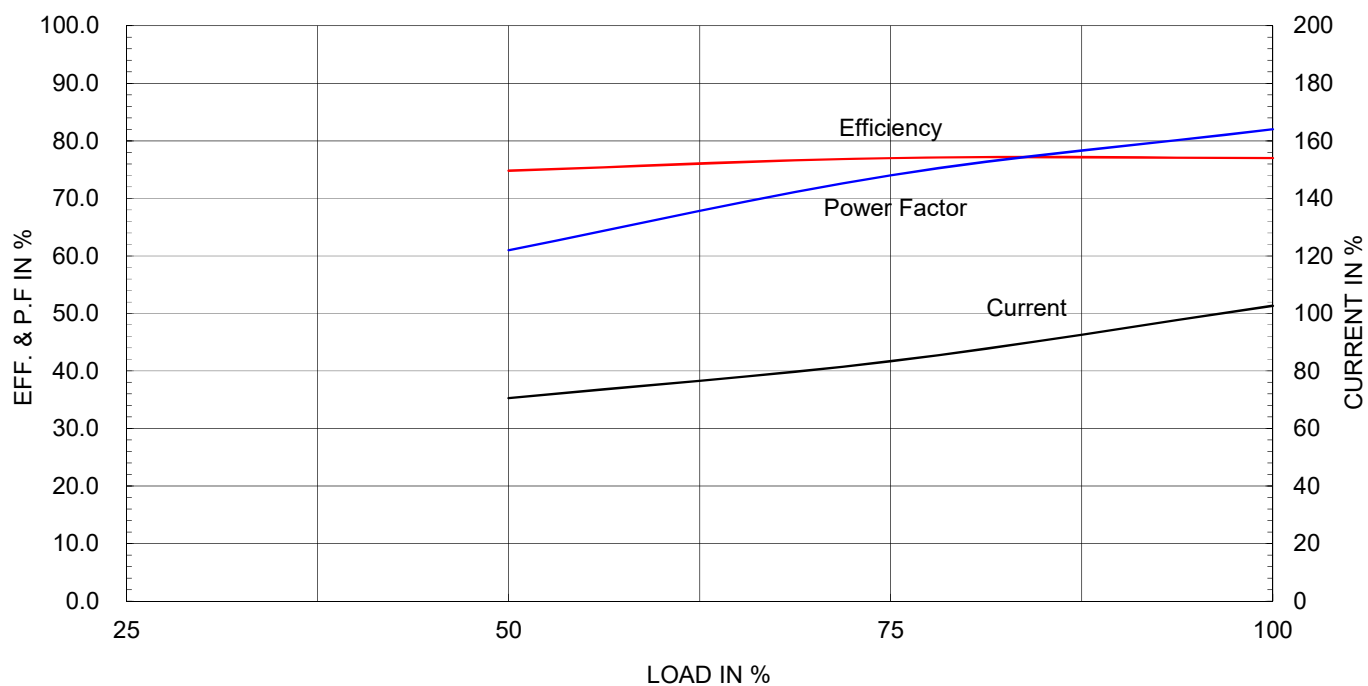
Type	:	HLP-0.75/2
Full Load Torque :	0.2	Kg-m
Load moment of Inertia (J) :	0.255	Kg-m ²
Motor moment of Inertia (J) :	0.0010	Kg-m ²

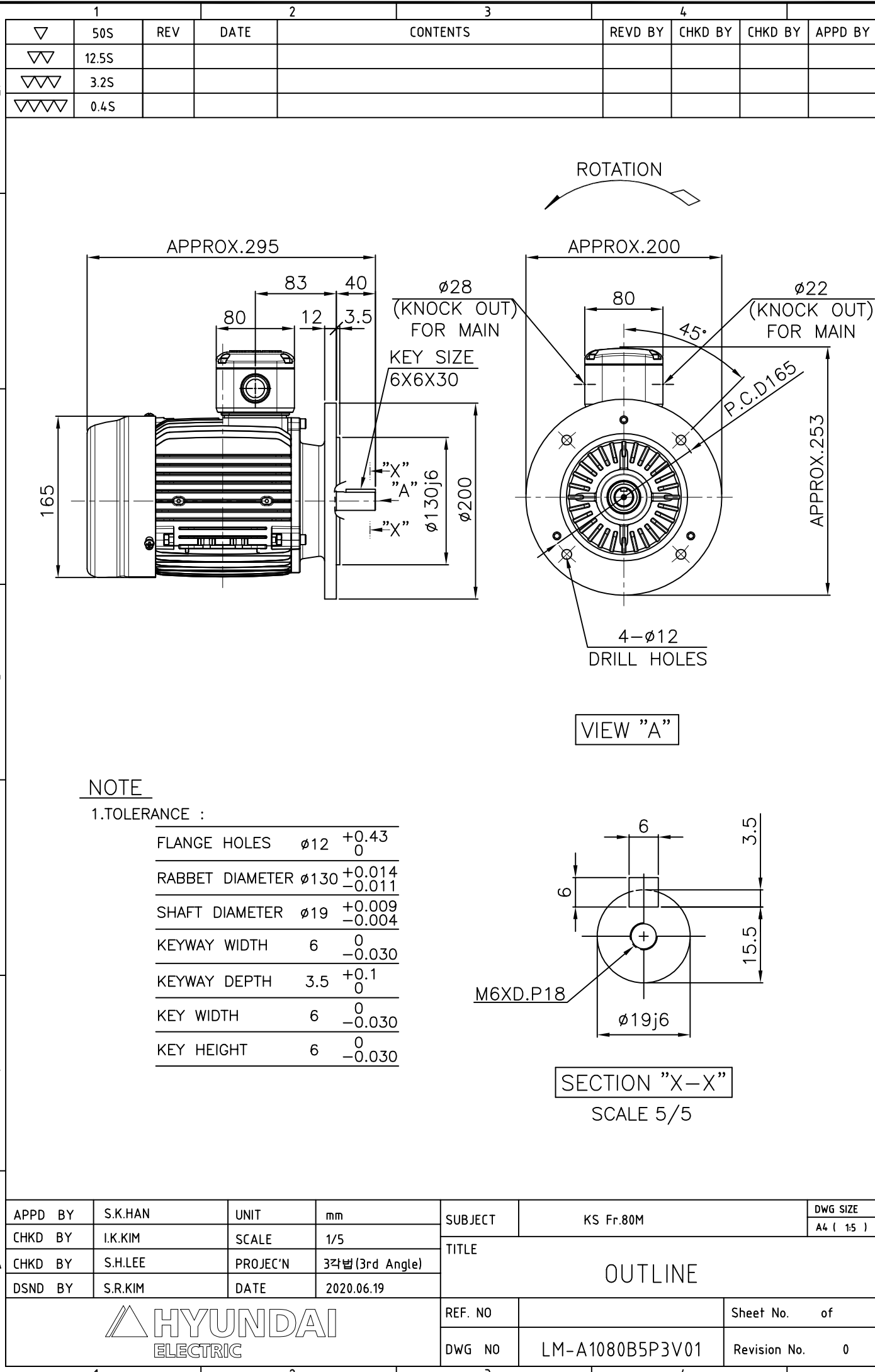
0.75kW	1HP	2P	60 Hz
Speed at Full Load : 3435 RPM			
Rated Voltage	440V	380V	220V
Full Load Current	1.6A	1.8A	3.1A

SPEED VS TORQUE & CURRENT CURVE



OUTPUT VS EFF., P.F & CURRENT CURVE





APPD BY	S.K.HAN	UNIT	mm	SUBJECT	KS Fr.80M	DWG SIZE	
CHKD BY	I.K.KIM	SCALE	1/5	TITLE	OUTLINE	A4 (15)	
CHKD BY	S.H.LEE	PROJEC'N	3각법 (3rd Angle)				
DSND BY	S.R.KIM	DATE	2020.06.19				
				REF. NO		Sheet No.	of
				DWG NO	LM-A1080B5P3V01	Revision No.	0

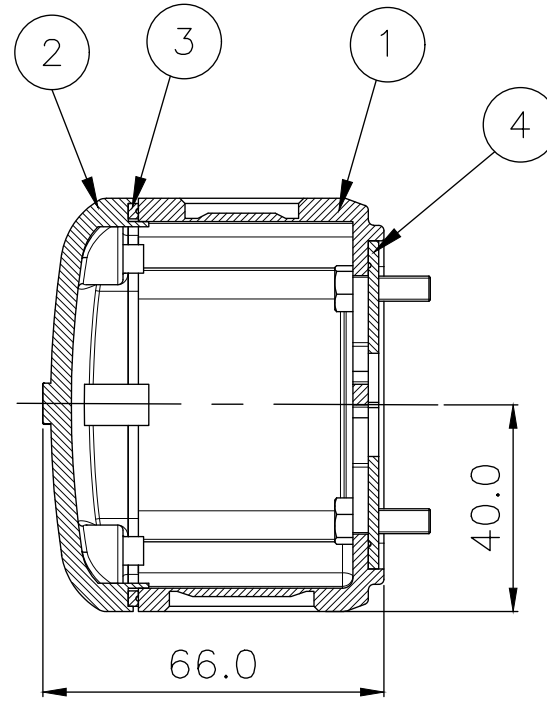
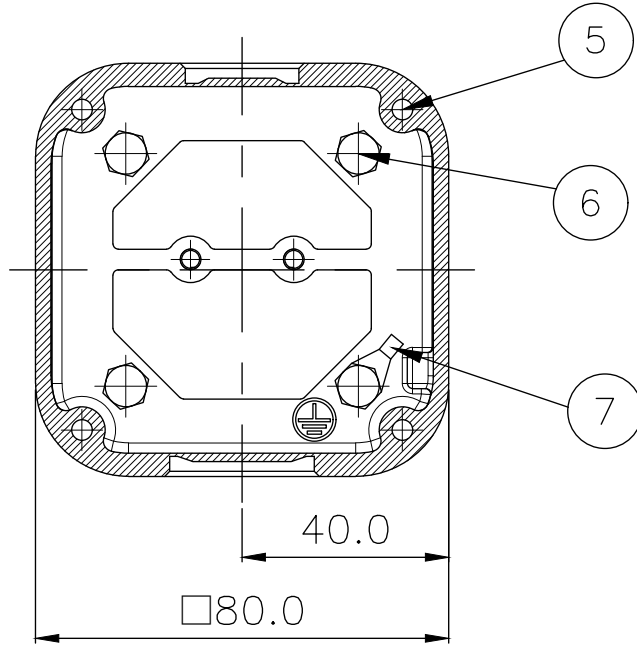
THIS DRAWING IS PROPRIETARY TO HYUNDAI ELECTRIC. NO PART OF THIS DRAWING
MAY BE REPRODUCED WITHOUT THE PERMISSION OF HYUNDAI ELECTRIC.



HYUNDAI
ELECTRIC

본 도면은 현대일렉트릭(주) 재산이므로
허가없이 복사할 수 없음 (취급유의)

▽	50S
▽▽	12.5S
▽▽▽	3.2S
▽▽▽▽	0.4S

REV	DATE	CONTENTS	REVD BY	CHKD BY	CHKD BY	APPD BY	일반기공표	일반계공표
							1-4 ±0.1 6-30 ±0.5	
							4-18 ±0.2 30-120 ±0.8	
							18-63 ±0.3 120-315 ±1.2	
							63-250 ±0.5 315-1000 ±2.0	
							250- ±0.8 1000- ±3.0	



1	GROUND TERMINAL LUG	CU	--				7	
4	BOX+FRAME HEX BOLT	S45C	M5 X L15				6	
4	COVER+BOX HEX BOLT	S45C	M5 X L15				5	
1	BOX GASKET	NBR	--				4	
1	COVER GASKET	NBR	--				3	
1	CONDUIT BOX COVER	AL	--				2	
1	CONDUIT BOX	AL	--				1	
Q'TY	DESCRIPTION	MATERIAL	DIMENSION		WEIGHT	PART NO.	REMARK	NO.
APPD BY	S.K.HAN	UNIT	mm	SUBJECT	SSEN SERIES 71-80FR. BOX		DWG SIZE	A3 (1:1)
CHKD BY	I.K.KIM	SCALE	1/1				TITLE	
CHKD BY		PROJEC'N	3rd Angle	TERMINAL BOX ASS'Y				
DSND BY		이승호	DATE					
				REF. NO		Sheet No. of		
				DWG NO	3M-234754	Revision No. 0		

HYUNDAI
ELECTRIC