

Model No.or RFQ No.	Item No.	Rev. No. [0]	
Project Name	Project No.	Quantity	sets

GENERAL SPECIFICATION			PERFORMANCE DATA			
Frame Size	280S		Rated Output	90 kW 120 HP		
Type	HS-90/6		Number of Poles	6		
Enclosure(Protection)	Explosion Proof (IP55)		Rotor Type	Squirrel Cage		
Method of Cooling	IC411(FC)		Starting Method*	<input checked="" type="checkbox"/> D.O.L <input type="checkbox"/> Y- Δ		
Rated Frequency	60 Hz		Rated Voltage	440 V	380 V 220 V	
Number of Phases	3		Current	Full Load	145.9 A 169.0 A 291.9 A	
Insulation Class	<input checked="" type="checkbox"/> F <input type="checkbox"/> B <input type="checkbox"/> H			Locked-rotor**	650 % 650 % 650 %	
Temp. Rise at full load (by resistance method)			Efficiency			
at 1.0 S.F 80 deg. C			50% Load 93.6 %			
Motor Location <input type="checkbox"/> Indoor <input checked="" type="checkbox"/> Outdoor			75% Load 94.2 %			
Altitude Less than 1000 meter			100% Load 94.1 %			
Relative Humidity Less than 80 %			Power Factor(p.u)			
Ambient Temp. 40 deg. C (Max.)			50% Load 0.771			
Duty Type Continuous (S1)			75% Load 0.839			
Service Factor 1.00			100% Load 0.860			
Mounting <input type="checkbox"/> B3 <input type="checkbox"/> B5 <input checked="" type="checkbox"/> V1 <input type="checkbox"/> B3/B5			Speed at Full Load 1185 r.p.m			
Bearing	Type	Anti-Friction		Torque		
	DE/N-DE	6318C3 / 6314C3		Full Load 74.0 kg·m		
	Lubricant	Grease(Gadus S2 V 100 2)		Locked-rotor** 170 %		
External Thrust Not applicable			Breakdown** 250 %			
Coupling Method <input checked="" type="checkbox"/> Direct <input type="checkbox"/> V-Belt			Moment of Inertia (J)			
Shaft Extension <input checked="" type="checkbox"/> Single <input type="checkbox"/> Double			Load(Max.) 130.225 kg·m ²			
Terminal Box	Main	<input type="checkbox"/> Steel <input checked="" type="checkbox"/> Cast Iron		Motor 4.135 kg·m ²		
	Aux.	<input type="checkbox"/> Yes <input checked="" type="checkbox"/> No		Sound Pressure Level (No-load & mean value at 1m from motor)		
	Location	Refer to Outline Drawing		77 dB(A)		
Application			Vibration 2.2 mm/sec (r.m.s)			
Area classification Hazardous			Permissible number of consecutive starts			
Type of Ex-Protection Ex d II T4			Cold 3 times			
Applicable Standard KS,IEC			Hot 2 times			
			Paint	Munsell No.	4.0PB5.4/5.5(VL-451)	

ACCESSORIES	SUBMITTAL DRAWING
	Outline Dimension Drawing \ Motor Weight(Approx.)
	B3
	B5 0 0 kg
	V1 GJ80PP02 1030 kg
	B3/B5 0 0 kg
	Main T-Box Ass'y 3M-036962

SPARE PARTS	REMARK
	High Efficiency

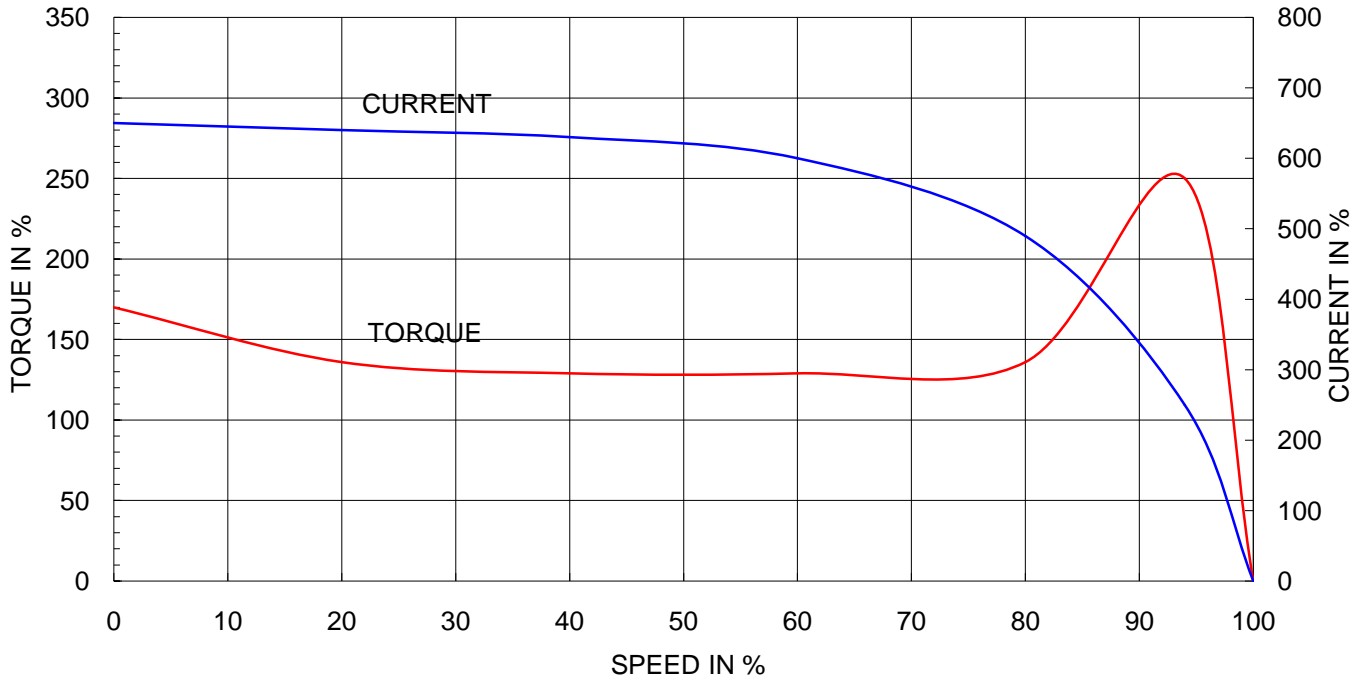
Date	DSND	CHKD	CHKD	APPD
2010-05-28	R.G. KIM	O.J. KIM	J.H. KIM	K.J. KANG

Note: Others not mentioned in this data sheet shall be in accordance with maker standard.
 Above technical data are only design values and shall be guaranteed with tolerance of applicable standard.
 Inspection and performance test shall be maker standard, if not mentioned.
 * In case of Inverter-Fed Motor, performance data is based on sine wave tests.
 ** Data is based on when the motor is supplied at rated voltage & frequency, and the data is expressed as a percentage of full-load value.

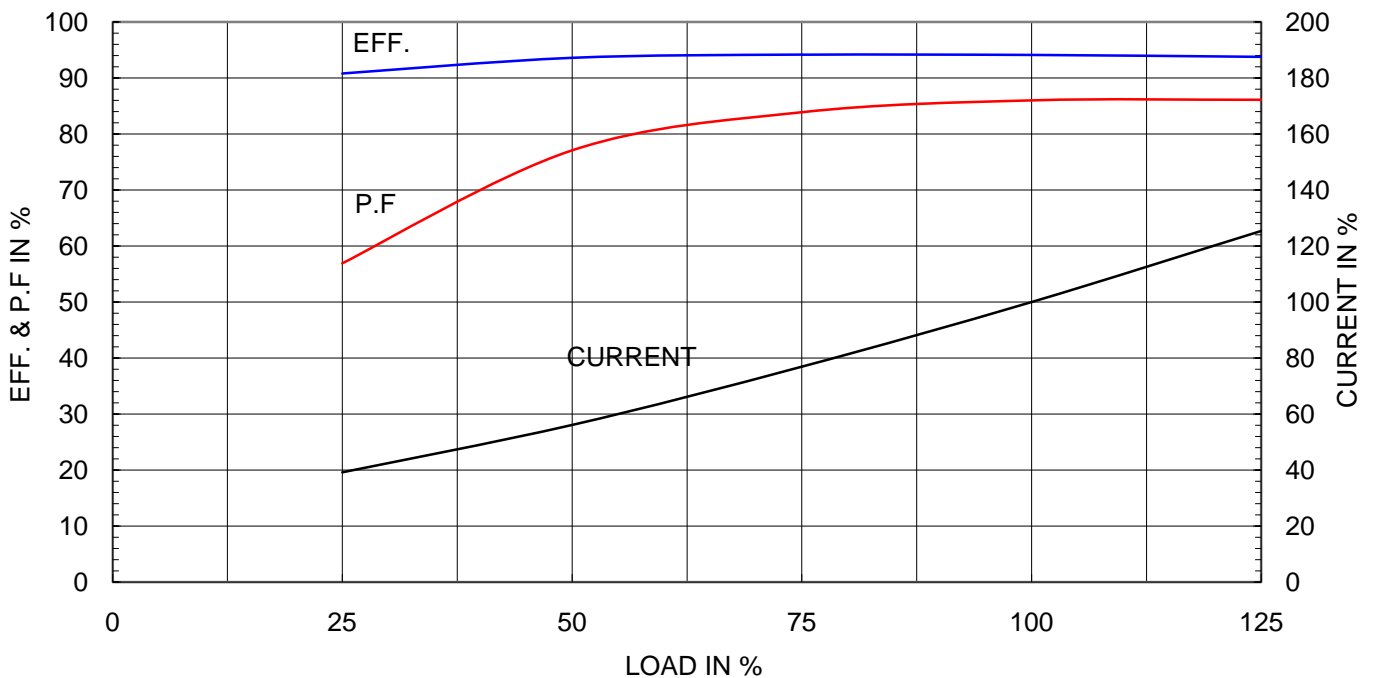
Type	: GHB280M
Full Load Torque	: 74.0 Kg.m
Motor moment of Inertia (J)	: 4.135 Kg.m ²
Load moment of Inertia (J)	: 130.225 Kg.m ²

90 kW	6 P	60 Hz	
Speed at Full Load :		1185 RPM	
Rated Voltage	440V	380V	220V
Full Load Current	145.9A	169.0A	291.9A

SPEED VS TORQUE & CURRENT CURVE



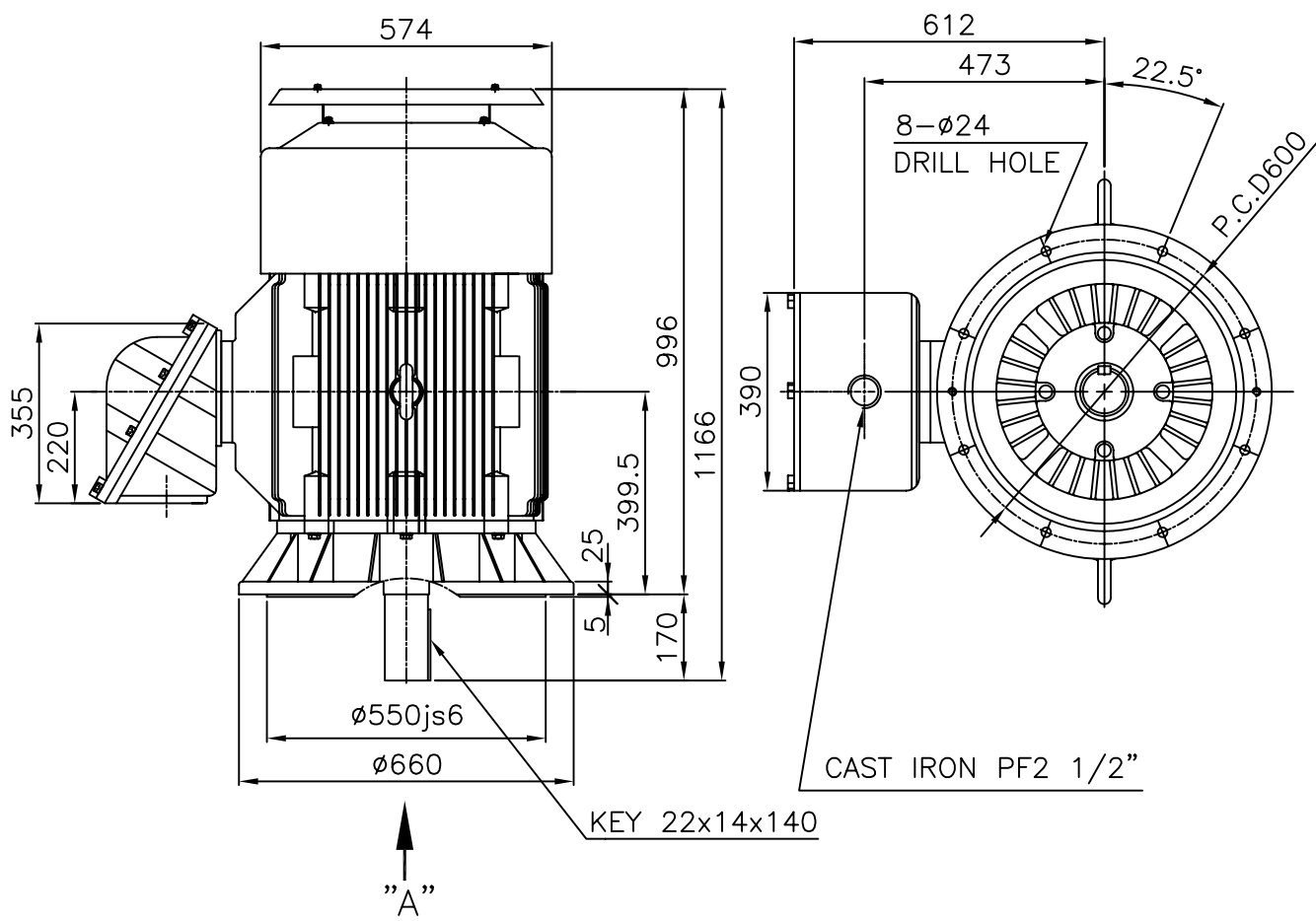
OUTPUT VS EFF., P.F & CURRENT CURVE



본 도면은 현대중공업(주) 재산이므로
허가없이 복사할 수 없습니다 (취급유의)

THIS DRAWING IS PROPRIETARY TO HHI. NO PART OF THIS DRAWING
MAYBE REPRODUCED WITHOUT THE PERMISSION OF HHI.

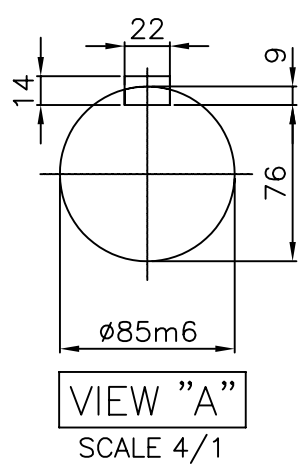
		<h1>TEFC</h1>		TYPE	GHB280M
THREE PHASE INDUCTION MOTOR					CAST IRON FRAME



NOTE

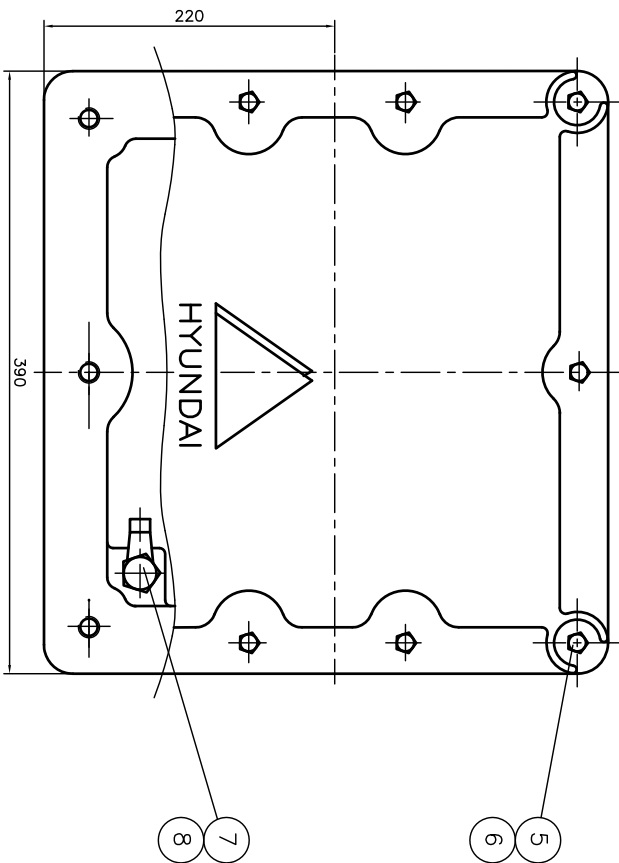
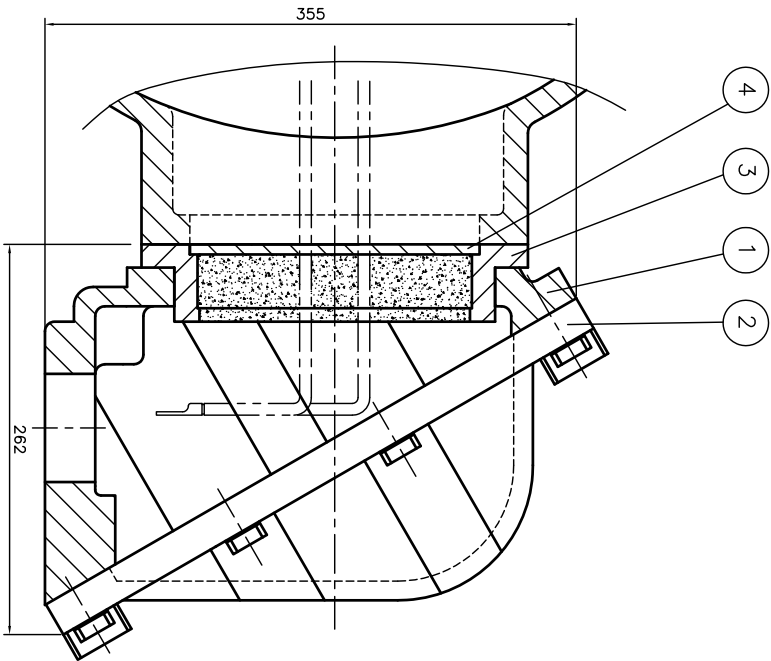
1.TOLERANCE :

RABBET DIAMETER	ø550 ±0.022
SHAFT DIAMETER	ø85 +0.035 / +0.013
KEYWAY WIDTH	22 -0.022 / -0.074
KEYWAY DEPTH	9 +0.2 / 0
KEY WIDTH	22 0 / -0.052
KEY HEIGHT	14 0 / -0.110



2.Ex d IIB T4 : (EXPLOSION CONSTRUCTION & IGNITION GROUP)

				TEFC STANDARD		
APPD BY	KIM Y.S	UNIT	mm	SUBJECT	KS Fr.280 d2G4	
CHKD BY		SCALE	1/15			CAD PROJ \ FILE MMSTDMTR/GJ80PP02
CHKD BY		PROJEC'N	3rd Angle	TITLE OUTLINE THREE-PHASE INDUCTION MOTOR		
DSND BY	NOH DUK LEE	DATE	2008.07.14			
REF. NO L3-SERIES				Sheet No. of		
DWG NO GJ80PP02				Revision No. 0		



QTY	DESCRIPTION	MATERIAL	DIMENSION	WEIGHT	PART NO.	REMARK	NO.
1	HEX. BOLT	BRONZE	M10				8
1	EARTH TERMINAL LUG	STD					7
10	SPRING WASHER	SUP-3					6
10	HEX. BOLT	S45C	M12				5
1	GUIDE PLATE	E.C.P					4
1	ADAPTER	FC25					3
1	TERMINAL BOX COVER	FC25					2
1	TERMINAL BOX BODY	FC25					1

APRD BY	UNIT	MM	SUBJECT	H/LAB FR-250,280 (2234)	SCALE	NONE	TITLE	TERMINAL BOX ASS'Y
CHKD BY	SCALE	NONE	PROJECN	3-24(3rd Angle)	DATE	98.10.30	REF. NO.	
DSND BY	KIM JONG SEON		DATE	98.10.30			DWG NO.	3M-036962
								Sheet No. of
								Revision No.

REV	DATE	CONTENTS	REQD BY	CHKD BY	APRD BY
1					
2					
3					
4					

