



AC INDUCTION MOTOR DATA SHEET

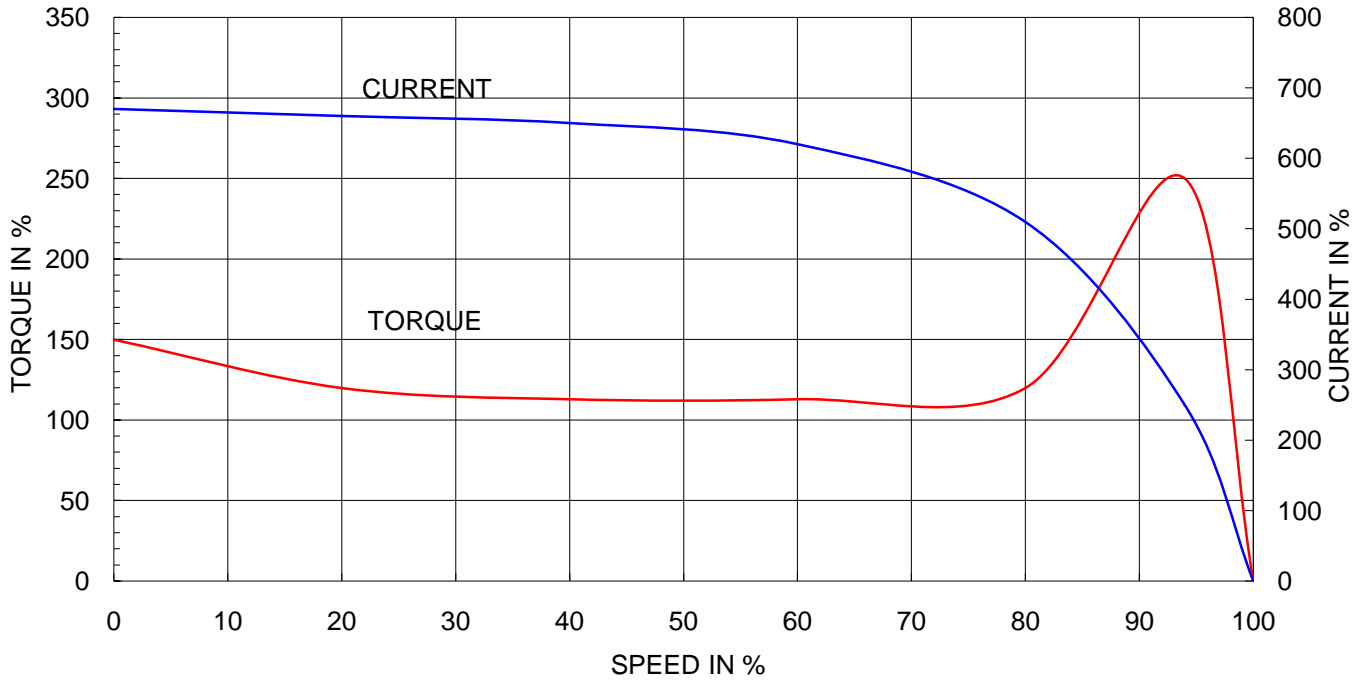
Model No.or RFQ No.		Item No.		Rev. No. [0]			
Project Name		Project No.		Quantity sets			
GENERAL SPECIFICATION			PERFORMANCE DATA				
Frame Size	250S		Rated Output	75 kW 100 HP			
Type	HS-75/4		Number of Poles	4			
Enclosure(Protection)	Explosion Proof (IP55)		Rotor Type	Squirrel Cage			
Method of Cooling	IC411(FC)		Starting Method*	<input checked="" type="checkbox"/> D.O.L <input type="checkbox"/> Y- Δ			
Rated Frequency	60 Hz		Rated Voltage	440 V	380 V 220 V		
Number of Phases	3		Current	Full Load	120.4 A 139.4 A 240.8 A		
Insulation Class	<input checked="" type="checkbox"/> F <input type="checkbox"/> B <input type="checkbox"/> H		Locked-rotor**	670 % 670 % 670 %			
Temp. Rise at full load (by resistance method)			Efficiency				
at 1.0 S.F	80 deg. C		50% Load	94.2 %			
Motor Location	<input checked="" type="checkbox"/> Indoor <input type="checkbox"/> Outdoor		75% Load	94.6 %			
Altitude	Less than 1000 meter		100% Load	94.5 %			
Relative Humidity	Less than 80 %		Power Factor(p.u)				
Ambient Temp.	40 deg. C (Max.)		50% Load	0.826			
Duty Type	Continuous (S1)		75% Load	0.860			
Service Factor	1.00		100% Load	0.865			
Mounting	<input checked="" type="checkbox"/> B3 <input type="checkbox"/> B5 <input type="checkbox"/> V1 <input type="checkbox"/> B3/B5		Speed at Full Load	1780 r.p.m			
Bearing	Type	Anti-Friction		Torque			
	DE/N-DE	6316C3 / 6313C3		Full Load	41.0 kg·m		
	Lubricant	Grease(Gadus S2 V 100 2)		Locked-rotor**	150 %		
External Thrust	Not applicable		Breakdown**	250 %			
Coupling Method	<input checked="" type="checkbox"/> Direct <input type="checkbox"/> V-Belt		Moment of Inertia (J)				
Shaft Extension	<input checked="" type="checkbox"/> Single <input type="checkbox"/> Double		Load(Max.)	56.350 kg·m ²			
Terminal Box	Main	<input type="checkbox"/> Steel <input checked="" type="checkbox"/> Cast Iron		Motor	1.723 kg·m ²		
	Aux.	<input type="checkbox"/> Yes <input checked="" type="checkbox"/> No		Sound Pressure Level (No-load & mean value at 1m from motor)			
	Location	Refer to Outline Drawing		82 dB(A)			
Application			Vibration	2.2 mm/sec (r.m.s)			
Area classification	Hazardous		Permissible number of consecutive starts	Cold	3 times		
Type of Ex-Protection	Ex d II T4			Hot	2 times		
Applicable Standard	KS,IEC		Paint	Munsell No.	4.0PB5.4/5.5(VL-451)		
ACCESSORIES			SUBMITTAL DRAWING				
			Outline Dimension Drawing \ Motor Weight(Approx.)				
			B3	GJ5SAP02	695 kg		
			B5	0	0 kg		
			V1		kg		
			B3/B5	0	0 kg		
			Main T-Box Ass'y	3M-036962			
SPARE PARTS			REMARK				
			High Efficiency				
			Date	DSND	CHKD	CHKD	APPD
			2010-05-28	R.G. KIM	O.J. KIM	J.H. KIM	K.J. KANG

Note: Others not mentioned in this data sheet shall be in accordance with maker standard.
 Above technical data are only design values and shall be guaranteed with tolerance of applicable standard.
 Inspection and performance test shall be maker standard, if not mentioned.
 * In case of Inverter-Fed Motor, performance data is based on sine wave tests.
 ** Data is based on when the motor is supplied at rated voltage & frequency, and the data is expressed as a percentage of full-load value.

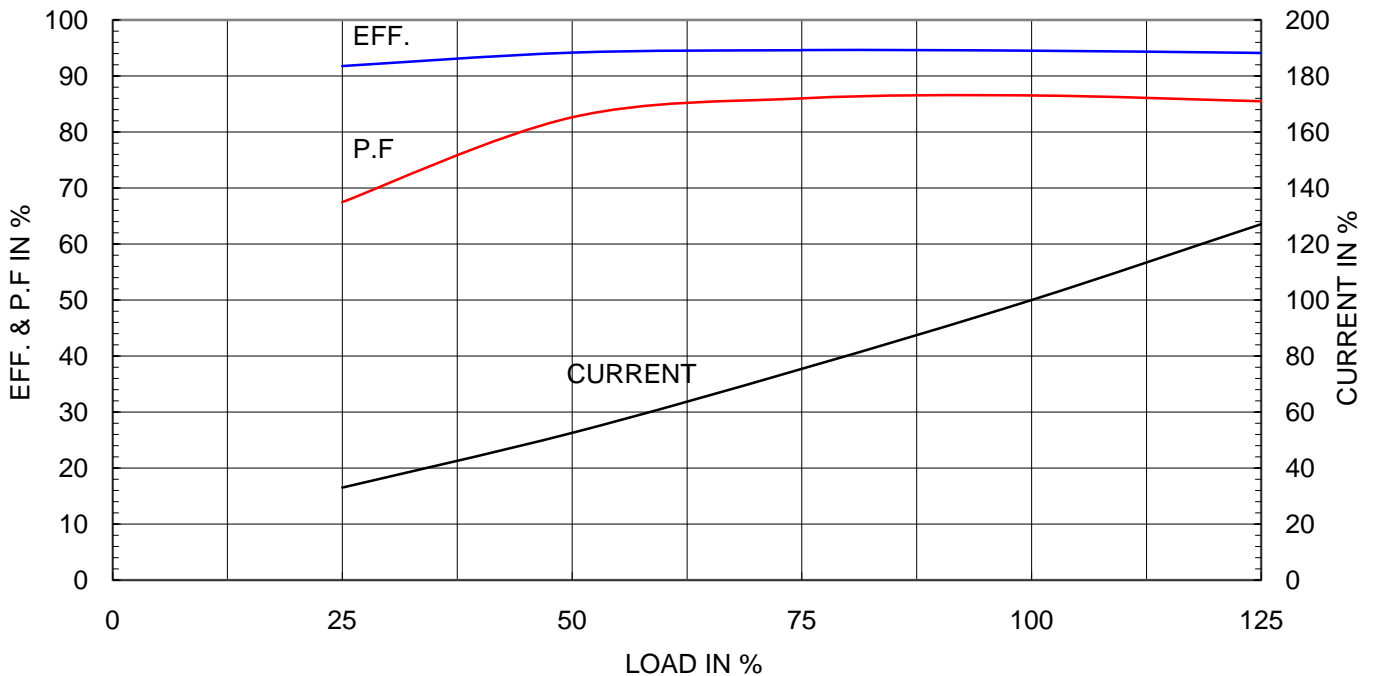
Type	: GHB250M
Full Load Torque	: 41.0 Kg.m
Motor moment of Inertia (J)	: 1.723 Kg.m ²
Load moment of Inertia (J)	: 56.350 Kg.m ²

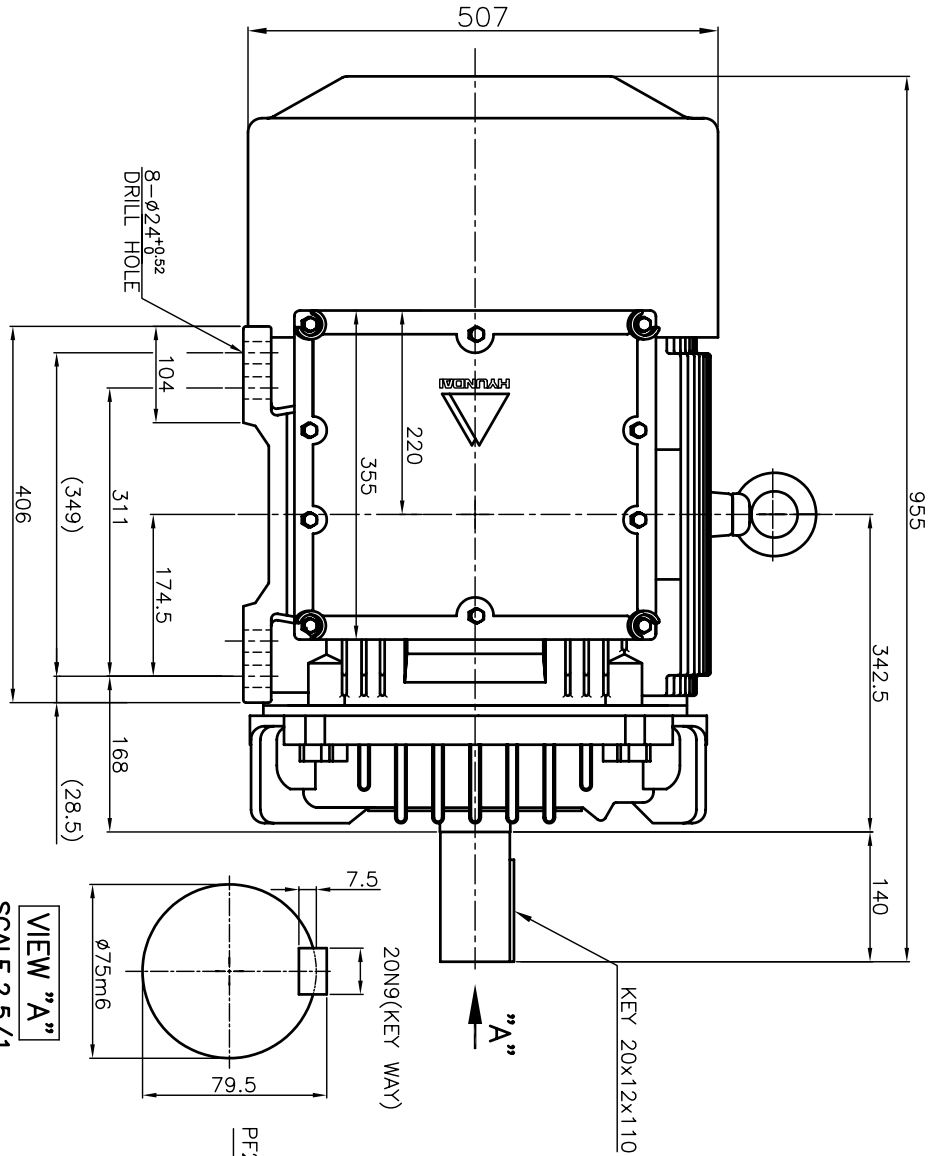
75 kW	4 P	60 Hz	
Speed at Full Load :		1780 RPM	
Rated Voltage	440V	380V	220V
Full Load Current	120.4A	139.4A	240.8A

SPEED VS TORQUE & CURRENT CURVE

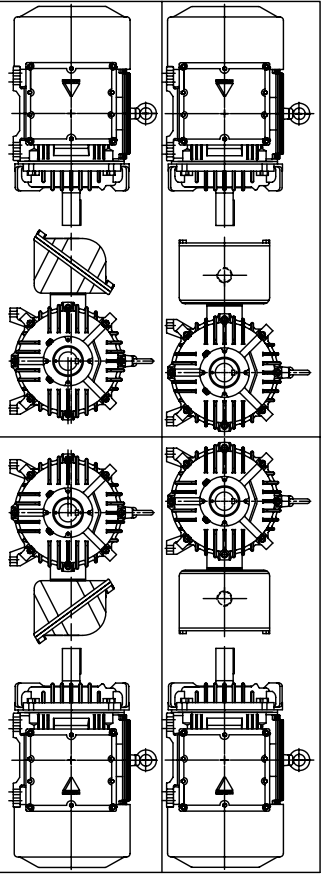


OUTPUT VS EFF., P.F & CURRENT CURVE

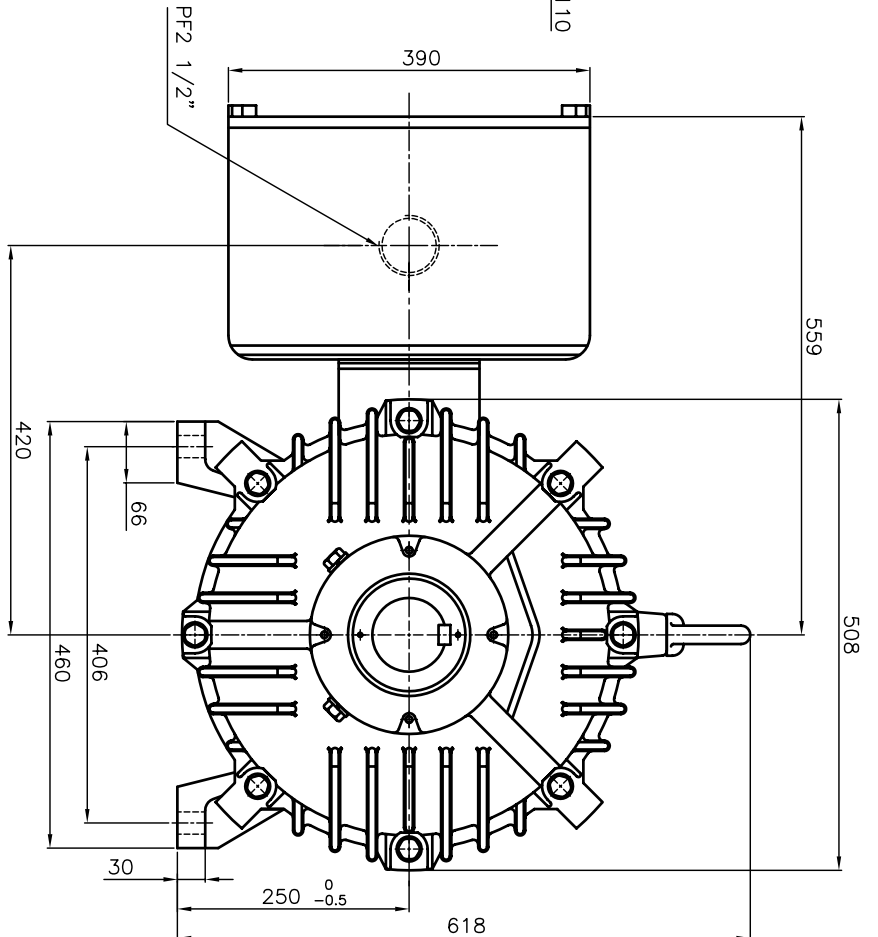




*TERMINAL BOX LOCATION



VIEW "A"
SCALE 2.5/1



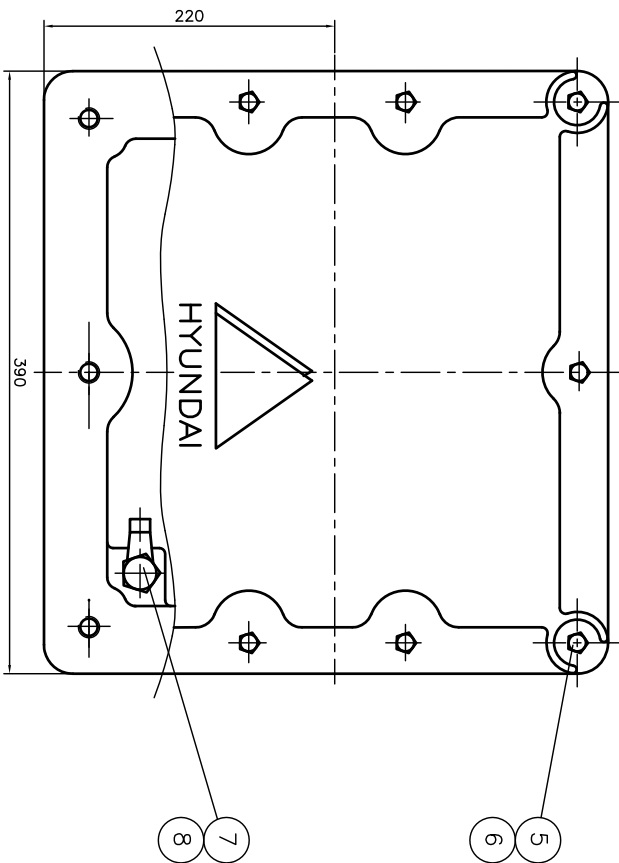
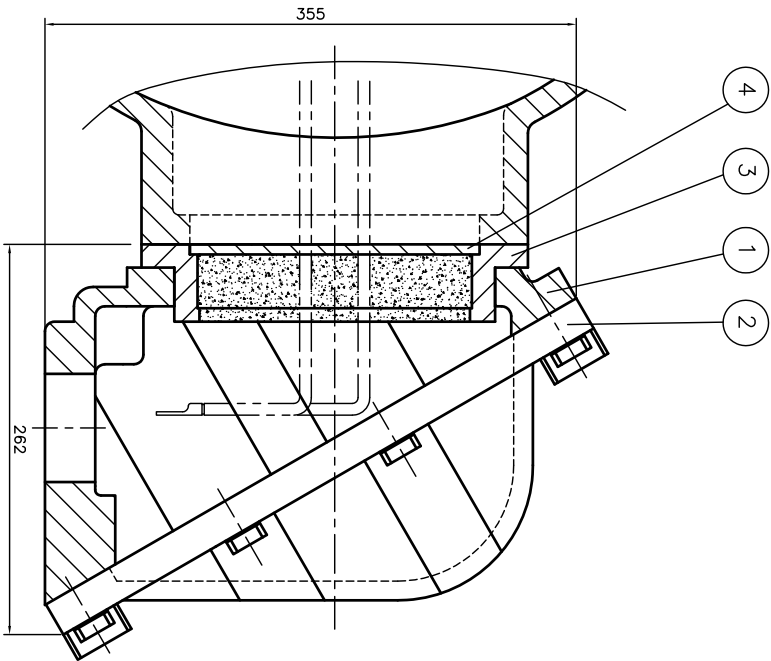
Exp d II B T4
(EXPLOSION CONSTRUCTION & IGNITION GRP)

REV	DATE	CONTENTS
1		
2		
3		
4		
5		

▽	50S	
▽▽	12.5S	
▽▽▽	3.2S	
▽▽▽▽	0.4S	

QTY	DESCRIPTION	MATERIAL	DIMENSION	WEIGHT	PART NO.	REMARK	NO.
APPD BY	강경중		UNIT	MM			
CHKD BY	김옥진		SCALE	1/6			
CHKD BY	김종선		PROJEC'	3rd Angle			
DSND BY	김형규		DATE	2005.06.07			
TITLE		OUTLINE DIMENSION					
THREE-PHASE INDUCTION MOTOR							
REF. NO		SHEET NO		GJSSAP-02		Revision No.	
		DWG NO				Sheet No. of	
						26K1	





QTY	DESCRIPTION	MATERIAL	DIMENSION	WEIGHT	PART NO.	REMARK	NO.
1	HEX. BOLT	BRONZE	M10				8
1	EARTH TERMINAL LUG	STD					7
10	SPRING WASHER	SUP-3					6
10	HEX. BOLT	S45C	M12				5
1	GUIDE PLATE	E.C.P					4
1	ADAPTER	FC25					3
1	TERMINAL BOX COVER	FC25					2
1	TERMINAL BOX BODY	FC25					1

APRD BY	UNIT	MM	SUBJECT	H/LAB FR-250,280 (2234)	SCALE	NONE	TITLE	TERMINAL BOX ASS'Y
CHK BY	SCALE	NONE	PROJECN	3-24(3rd Angle)	DATE	98.10.30	REF. NO.	
DSND BY	KIM JONG SEON	DATE	DWG NO.	3M-036962	REV. NO.		SHEET NO.	
								OF
								REVISION NO.

REV	DATE	CONTENTS	REQD BY	CHKD BY	APRD BY
1					
2					
3					
4					

