

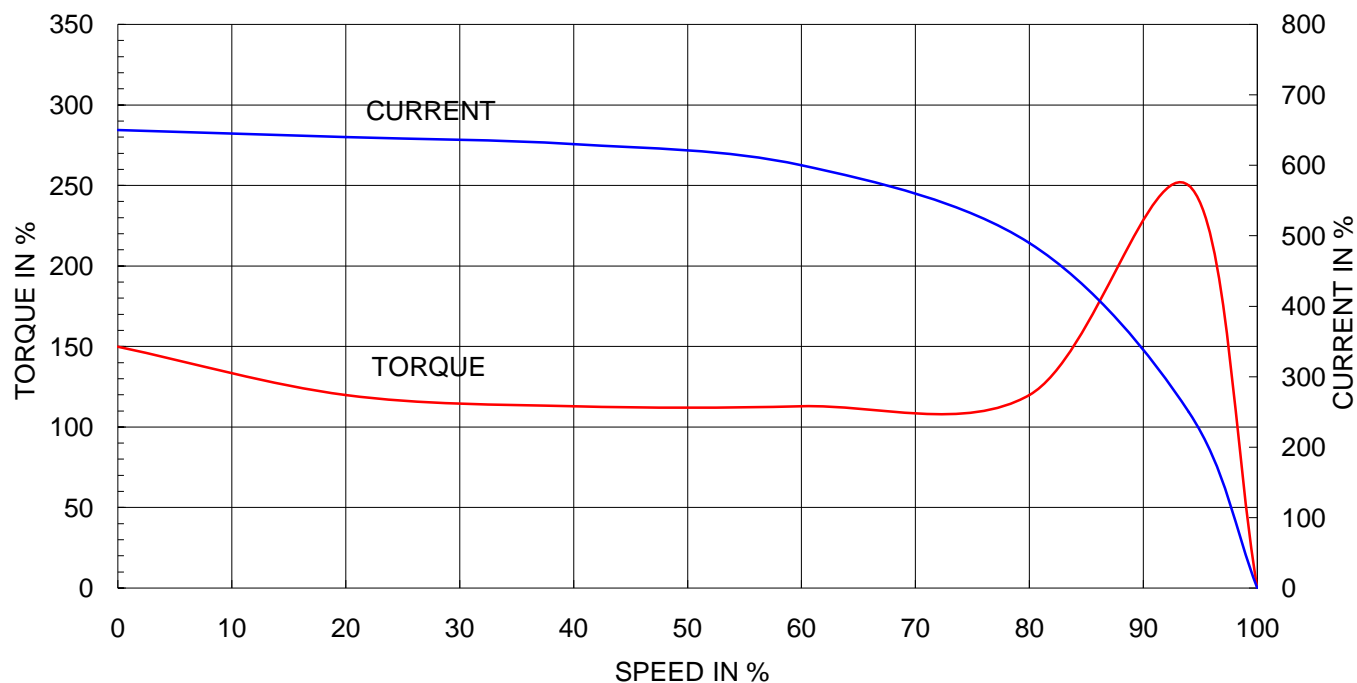


Note: Others not mentioned in this data sheet shall be in accordance with maker standard.  
 Above technical data are only design values and shall be guaranteed with tolerance of applicable standard.  
 Inspection and performance test shall be maker standard, if not mentioned.  
 \* In case of Inverter-Fed Motor, performance data is based on sine wave tests.  
 \*\* Data is based on when the motor is supplied at rated voltage & frequency, and the data is expressed as a percentage of full-load value.

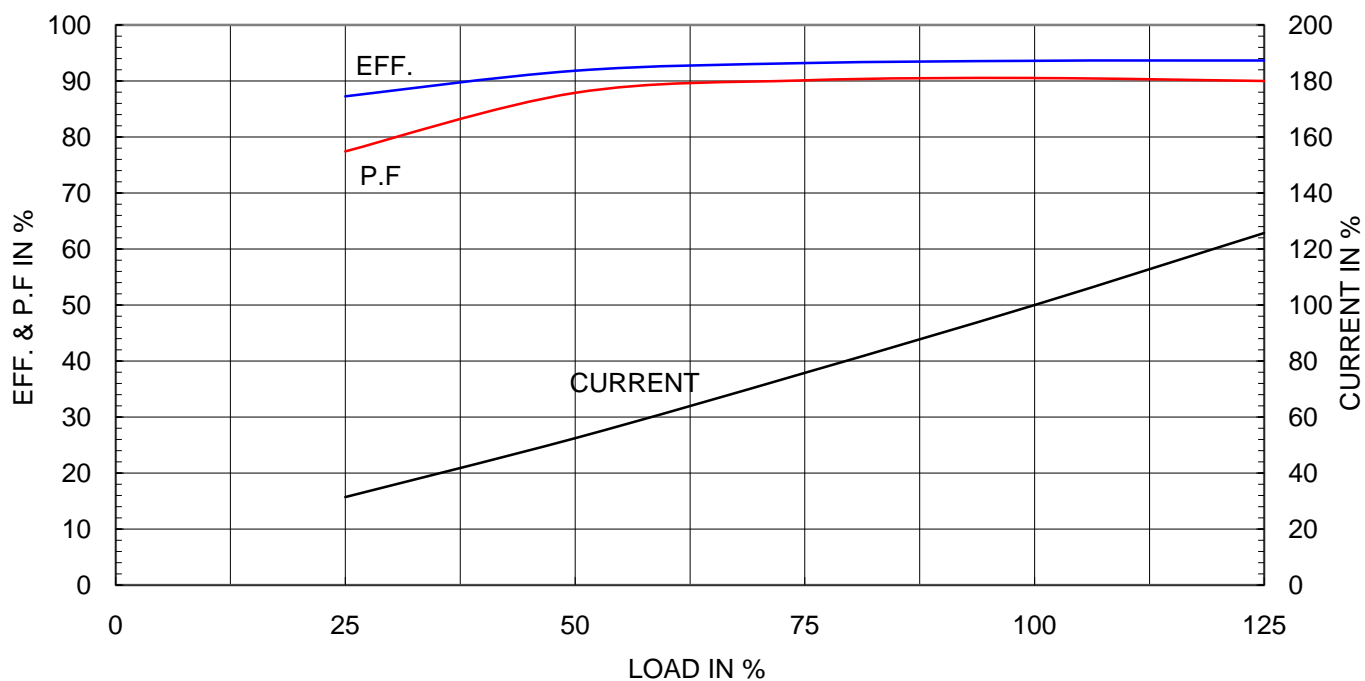
|                             |   |                         |
|-----------------------------|---|-------------------------|
| Type                        | : | GHB250M                 |
| Full Load Torque            | : | 20.5 Kg.m               |
| Motor moment of Inertia (J) | : | 1.053 Kg.m <sup>2</sup> |
| Load moment of Inertia (J)  | : | 9.050 Kg.m <sup>2</sup> |

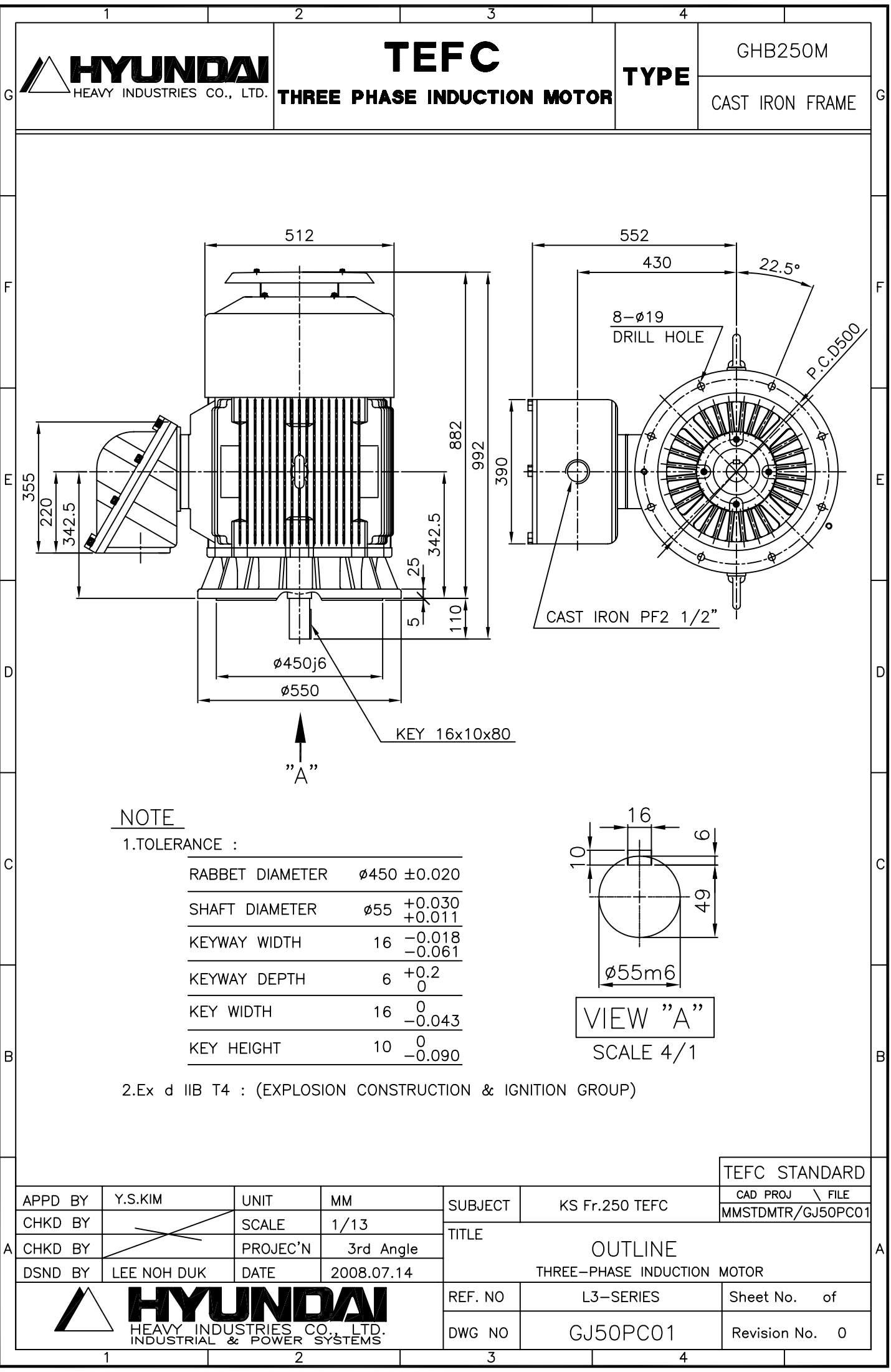
|                      |        |        |        |          |  |
|----------------------|--------|--------|--------|----------|--|
| 75 kW                |        | 2 P    |        | 60 Hz    |  |
| Speed at Full Load : |        |        |        | 3570 RPM |  |
| Rated Voltage        | 440V   | 380V   | 220V   |          |  |
| Full Load Current    | 116.2A | 134.5A | 232.4A |          |  |

SPEED VS TORQUE &amp; CURRENT CURVE



OUTPUT VS EFF., P.F &amp; CURRENT CURVE

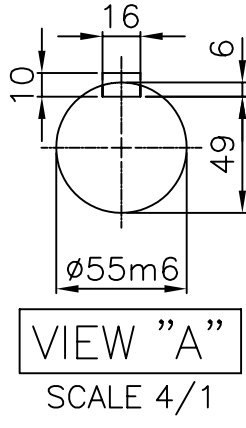




**NOTE**

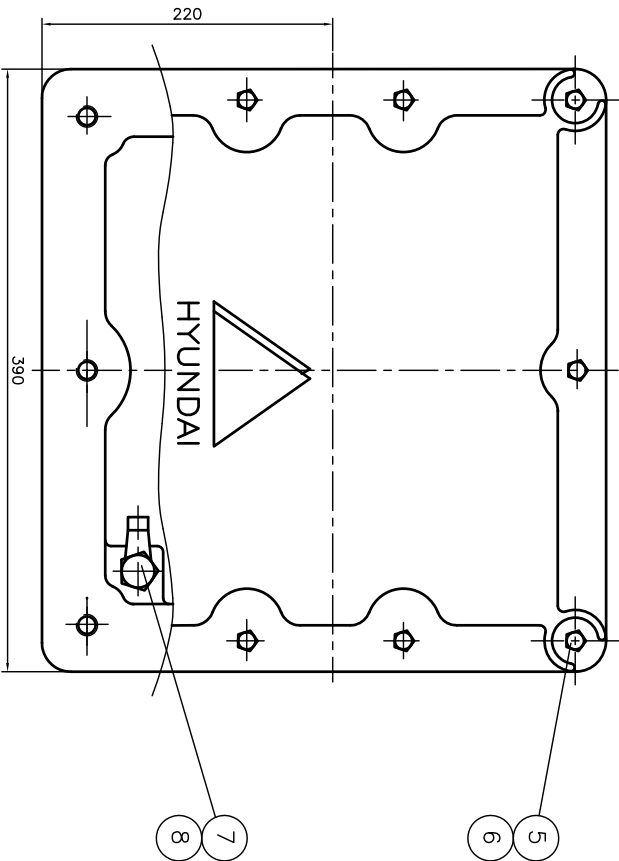
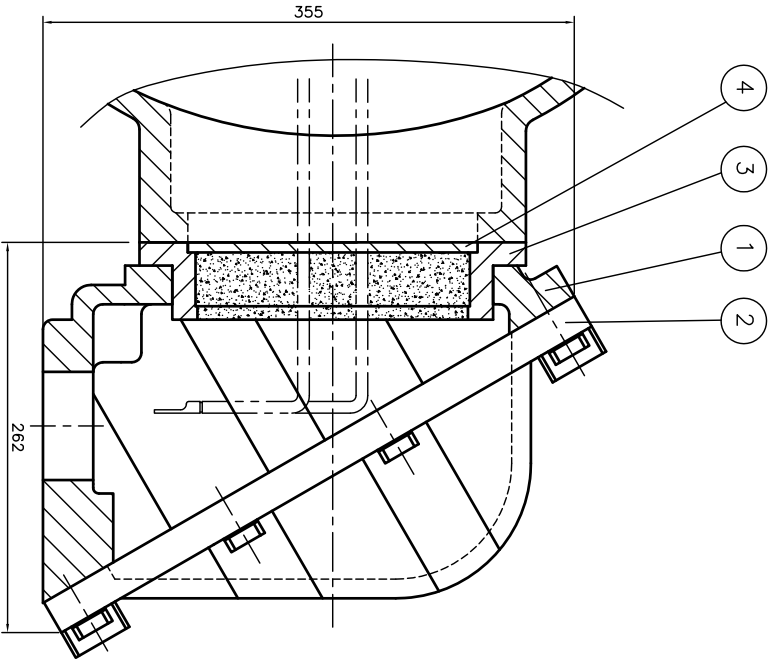
1.TOLERANCE :

|                 |                      |
|-----------------|----------------------|
| RABBET DIAMETER | ø450 ±0.020          |
| SHAFT DIAMETER  | ø55 +0.030<br>+0.011 |
| KEYWAY WIDTH    | 16 -0.018<br>-0.061  |
| KEYWAY DEPTH    | 6 +0.2<br>0          |
| KEY WIDTH       | 16 0<br>-0.043       |
| KEY HEIGHT      | 10 0<br>-0.090       |



2.Ex d IIB T4 : (EXPLOSION CONSTRUCTION & IGNITION GROUP)

|         |             |          |            |                             |                |
|---------|-------------|----------|------------|-----------------------------|----------------|
|         |             |          |            | TEFC STANDARD               |                |
| APPD BY | Y.S.KIM     | UNIT     | MM         | SUBJECT                     | KS Fr.250 TEFC |
| CHKD BY |             | SCALE    | 1/13       | CAD PROJ \ FILE             |                |
| CHKD BY |             | PROJEC'N | 3rd Angle  | MMSTDMTR/GJ50PC01           |                |
| DSND BY | LEE NOH DUK | DATE     | 2008.07.14 | TITLE                       |                |
|         |             |          |            | OUTLINE                     |                |
|         |             |          |            | THREE-PHASE INDUCTION MOTOR |                |
|         |             |          |            | REF. NO                     | L3-SERIES      |
|         |             |          |            | DWG NO                      | GJ50PC01       |
|         |             |          |            | Sheet No.                   | of             |
|         |             |          |            | Revision No.                | 0              |



|          |                      |                 |              |                        |          |        |     |   |
|----------|----------------------|-----------------|--------------|------------------------|----------|--------|-----|---|
| 1        | HEX. BOLT            | BRONZE          | M10          |                        |          |        |     | 8 |
|          | 1 EARTH TERMINAL LUG | STD             |              |                        |          |        |     | 7 |
|          | 10 SPRING WASHER     | SUP-3           |              |                        |          |        |     | 6 |
|          | 10 HEX. BOLT         | S45C            | M12          |                        |          |        |     | 5 |
|          | 1 GUIDE PLATE        | E.G.P           |              |                        |          |        |     | 4 |
|          | 1 ADAPTER            | FC25            |              |                        |          |        |     | 3 |
|          | 1 TERMINAL BOX COVER | FC25            |              |                        |          |        |     | 2 |
|          | 1 TERMINAL BOX BODY  | FC25            |              |                        |          |        |     | 1 |
| QTY      | DESCRIPTION          | MATERIAL        | DIMENSION    | WEIGHT                 | PART NO. | REMARK | NO. |   |
| APPD BY  | UNIT                 | MM              |              |                        |          |        |     |   |
| Q.P. CHK | SCALE                | NONE            |              |                        |          |        |     |   |
| CHGD BY  | PROJECT              | 3-24(3rd Angle) | SUBJECT      | HLA6 FR.250,280 (G234) |          |        |     |   |
| DSND BY  | DATE                 | 98.10.30        | TITLE        | TERMINAL BOX ASS'Y     |          |        |     |   |
| REF. NO  | DWG NO               | 3M-036962       | SHEET NO.    | of                     |          |        |     |   |
|          |                      |                 | Revision No. |                        |          |        |     |   |