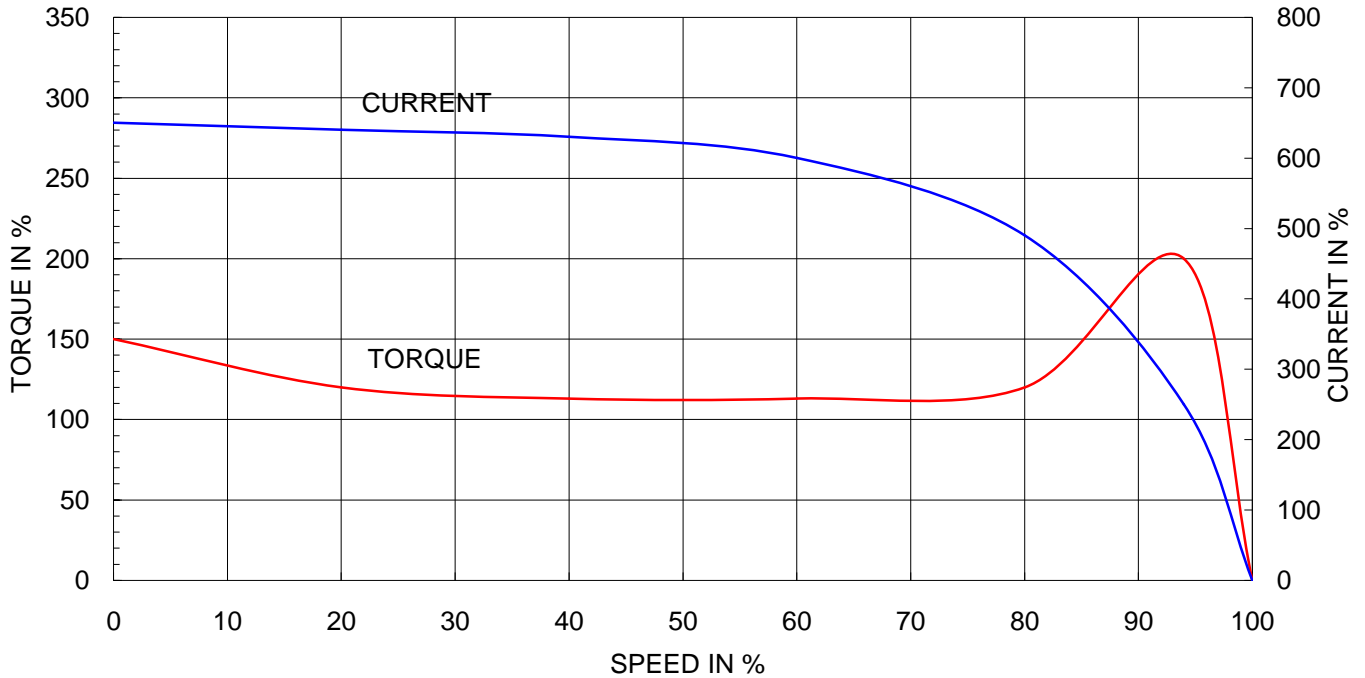


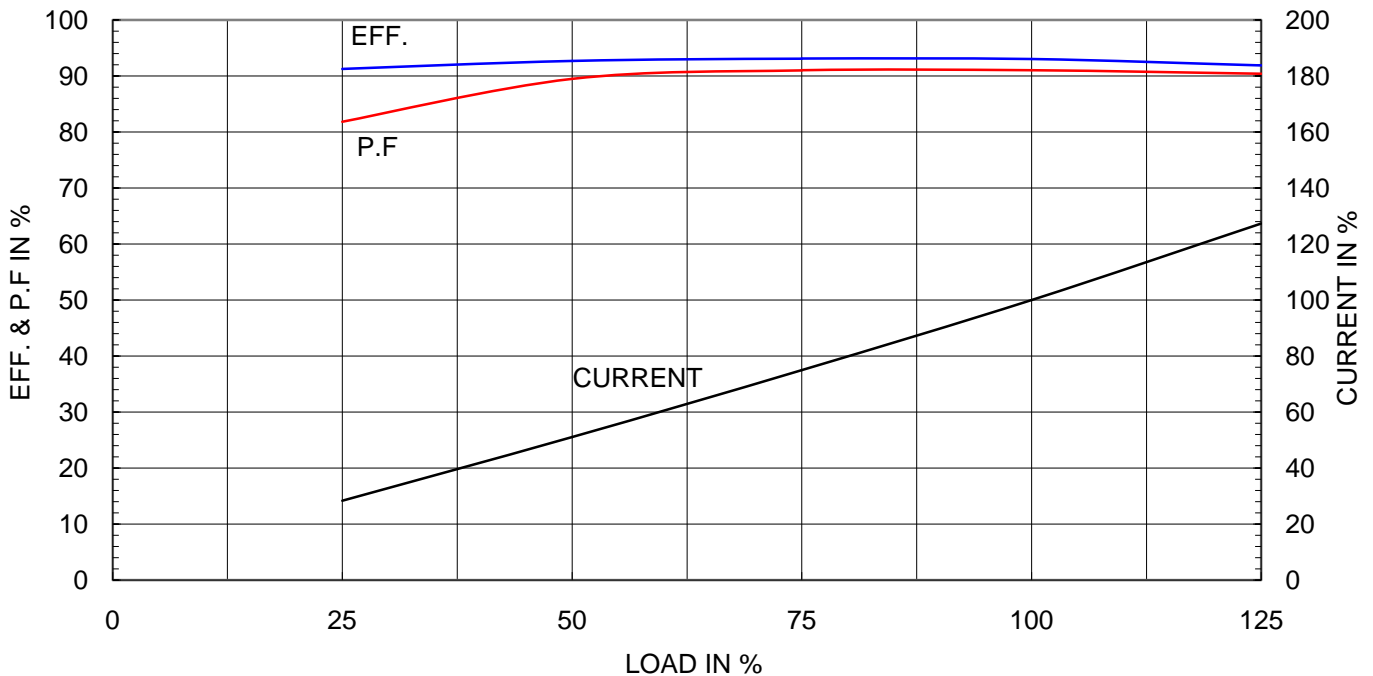
Type	:	HL-XP
Full Load Torque	:	12.3 Kg.m
Motor moment of Inertia (J)	:	0.208 Kg.m ²
Load moment of Inertia (J)	:	4.750 Kg.m ²

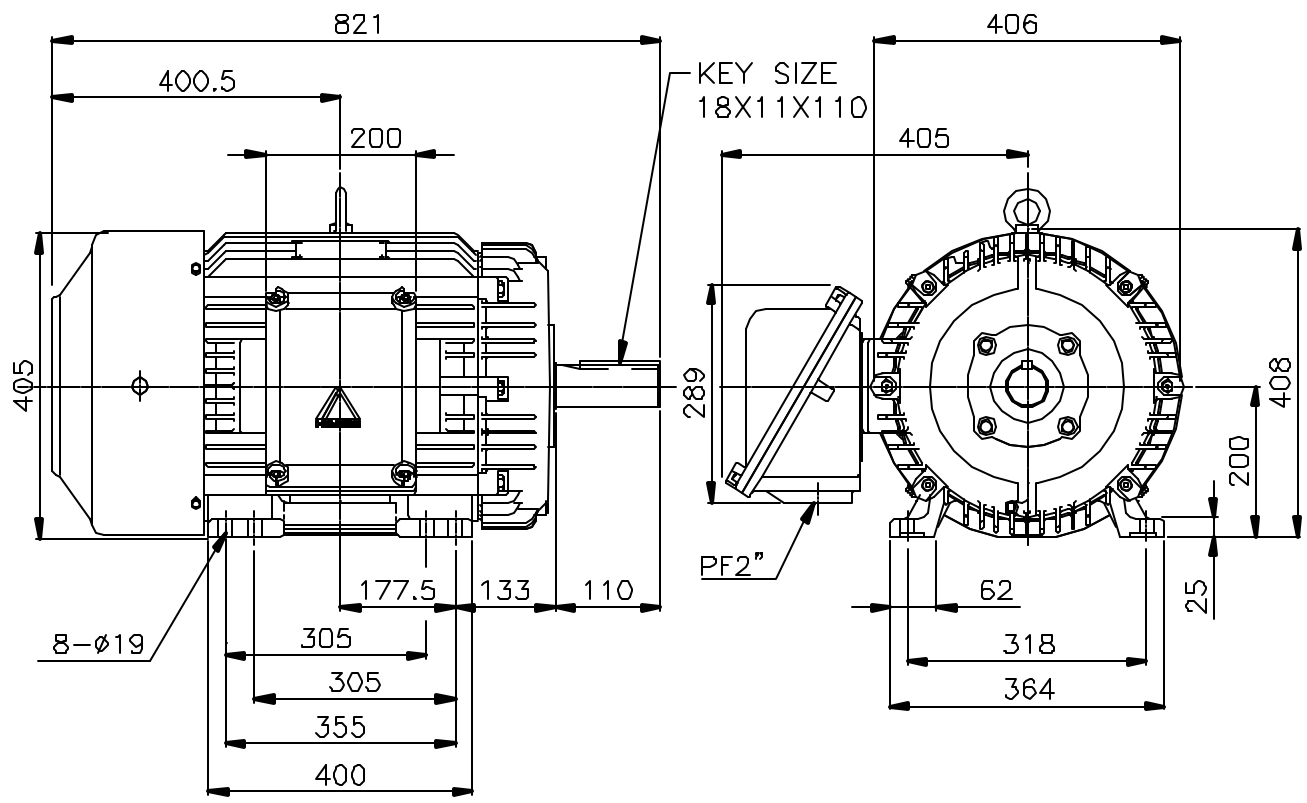
45 kW	2 P	60 Hz	
Speed at Full Load :		3560 RPM	
Rated Voltage	440V	380V	220V
Full Load Current	69.8A	80.8A	139.5A

SPEED VS TORQUE & CURRENT CURVE



OUTPUT VS EFF., P.F & CURRENT CURVE

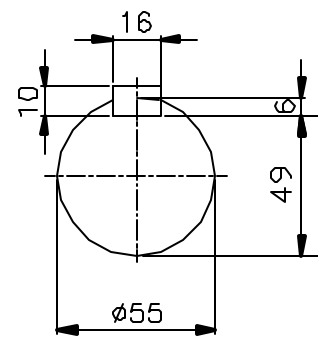




NOTE

1. TOLERANCE :

CENTER HEIGHT	200	+0	-0.5
BASE HOLES	ø19	+0.43	-0
SHAFT DIAMETER	ø55	+0.030	+0.011
KEYWAY WIDTH	16	+0	-0.043
KEYWAY DEPTH	6	+0	-0.2



APPD BY	J. H. KIM	UNIT	mm	SUBJECT	KS 200LL 2P d2G4	CAD PROJ \ FILE
CHKD BY	Y. S. KIM	SCALE	1/10			XSDNKS\B2001AA10
CHKD BY	S. H. KO	PROJEC'N	3rd Angle	TITLE OUTLINE		
DSND BY	I. K. KIM	DATE	2002.10.31			
				REF. NO	B1600X19	Sheet No. of
				DWG NO	227B1600X19	Revision No. 0

