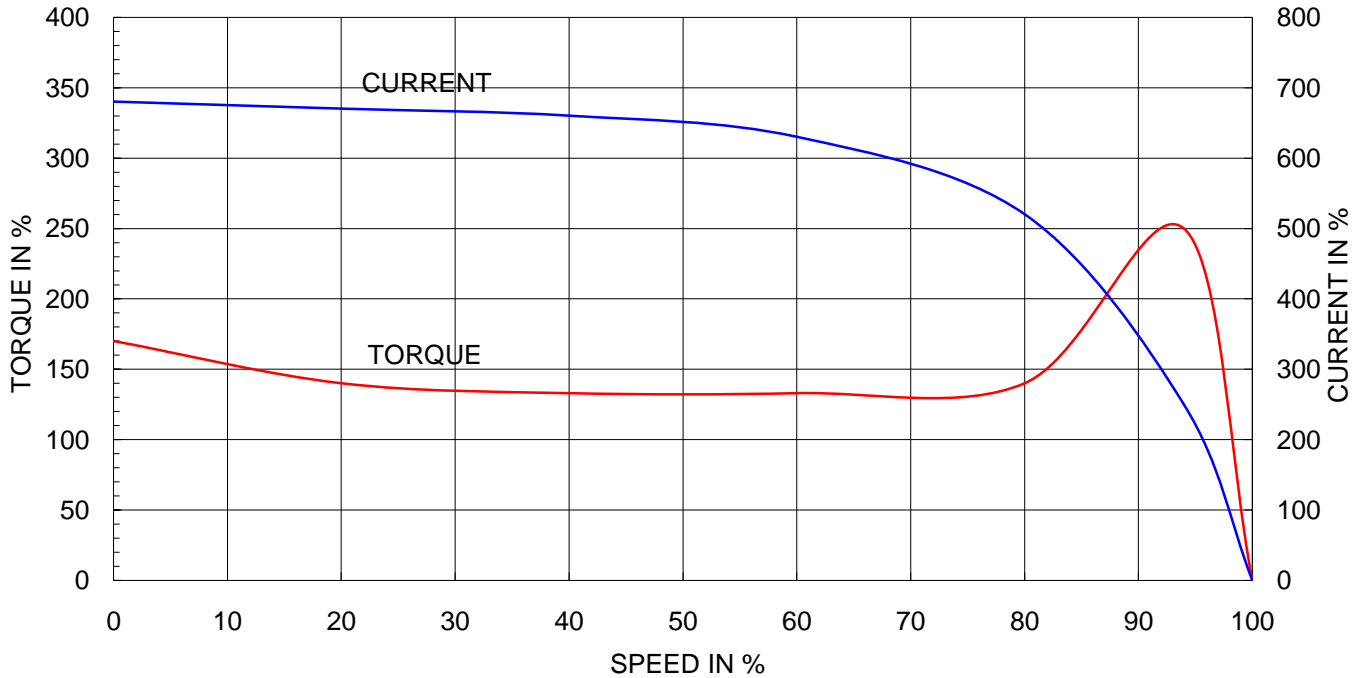


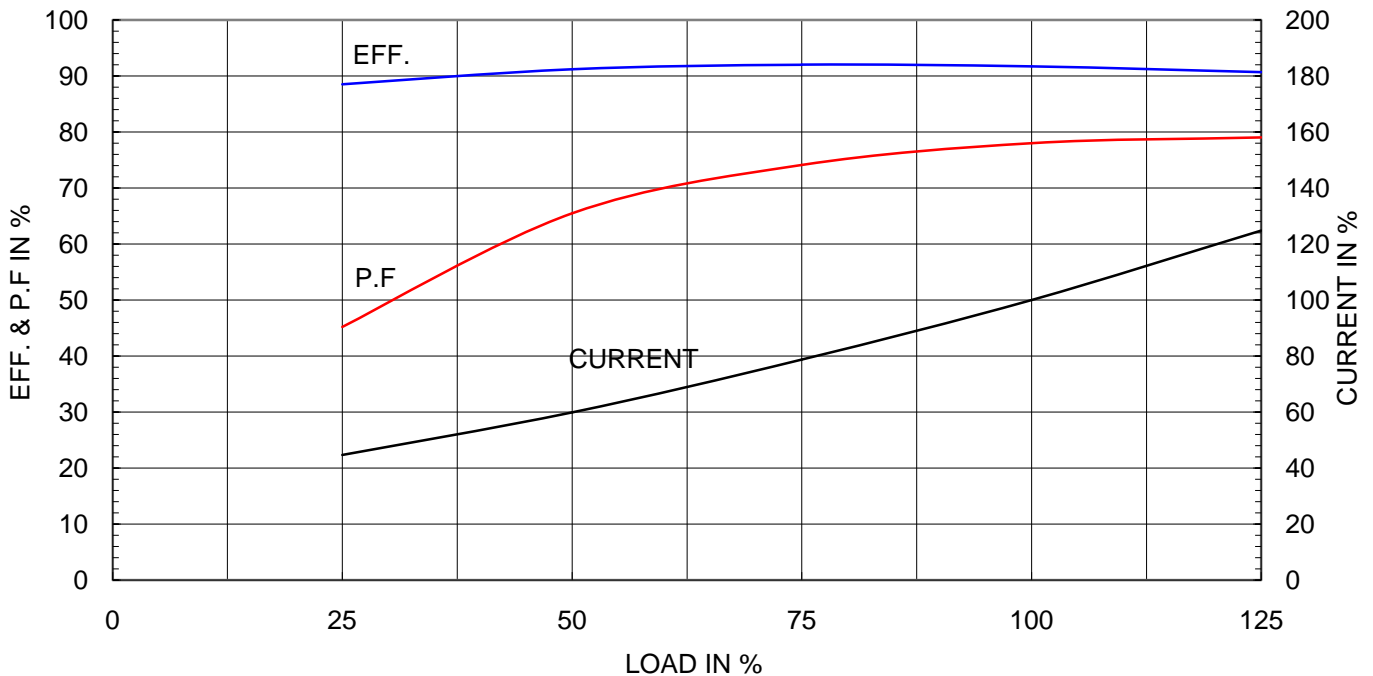
Type	:	HL-XP
Full Load Torque	:	18.2 Kg.m
Motor moment of Inertia (J)	:	0.270 Kg.m ²
Load moment of Inertia (J)	:	42.000 Kg.m ²

22 kW	6 P	60 Hz	
Speed at Full Load :		1175 RPM	
Rated Voltage	440V	380V	220V
Full Load Current	40.4A	46.7A	80.7A

SPEED VS TORQUE & CURRENT CURVE



OUTPUT VS EFF., P.F & CURRENT CURVE





TEFC

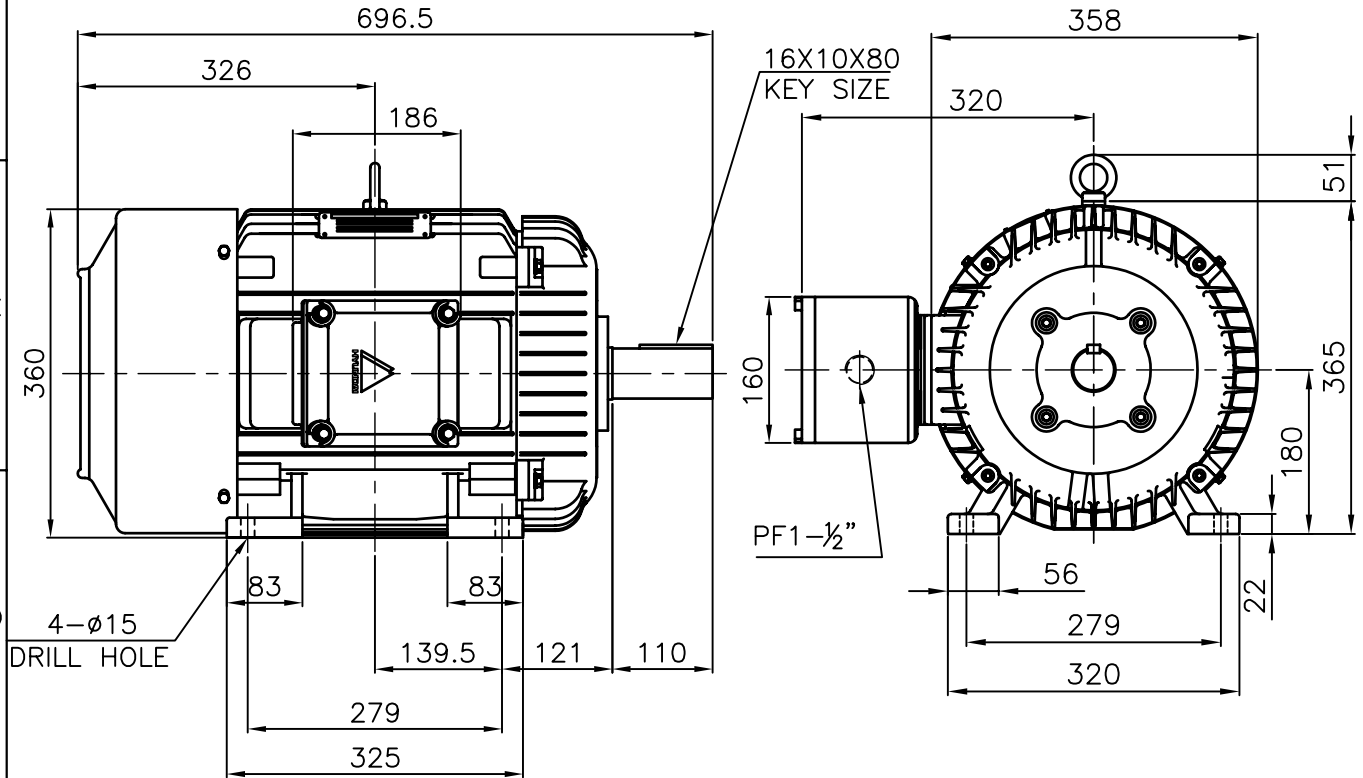
THREE PHASE INDUCTION MOTOR

TYPE

HL, HLS

CAST IRON FRAME

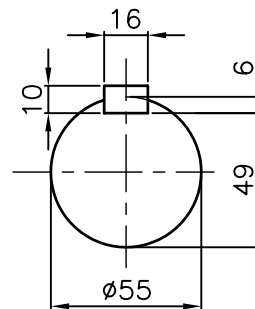
Exd II



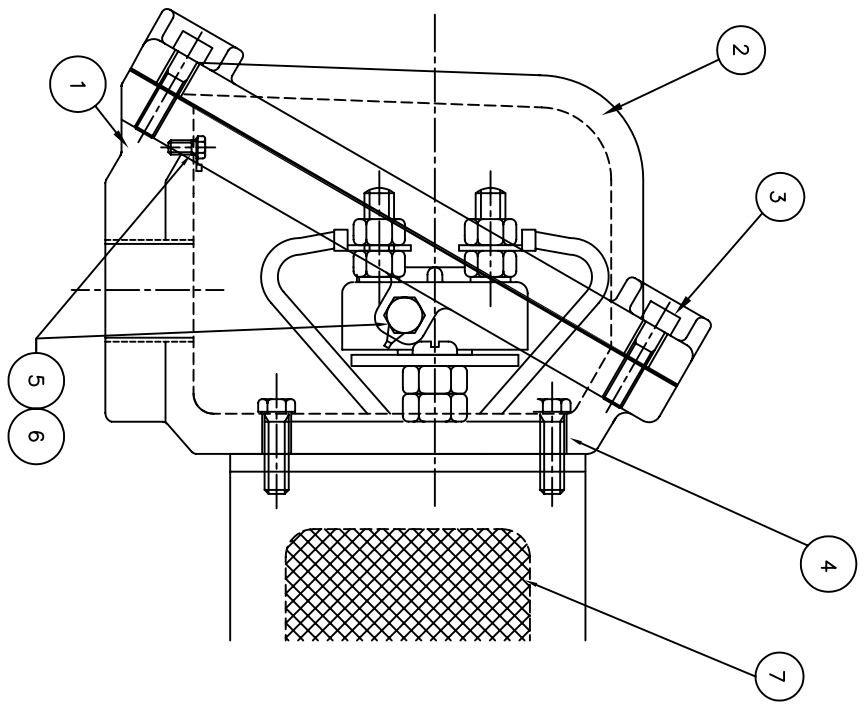
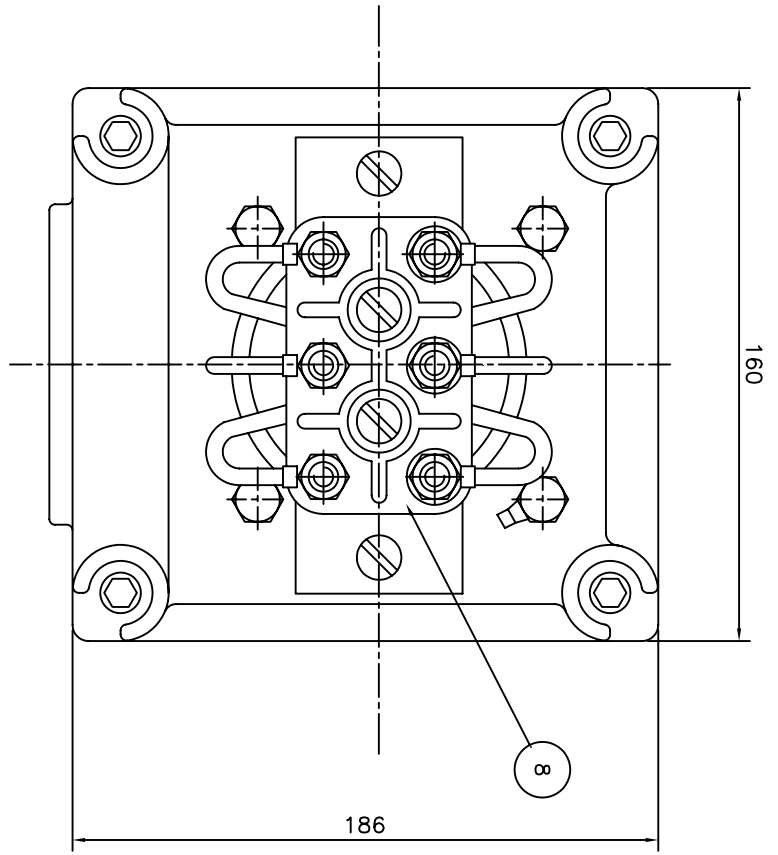
NOTE

1.TOLERANCE :

CENTER HEIGHT	180	$\begin{matrix} 0 \\ -0.5 \end{matrix}$
BASE HOLES	$\phi 15$	$\begin{matrix} +0.43 \\ 0 \end{matrix}$
SHAFT DIAMETER	$\phi 55$	$\begin{matrix} +0.030 \\ +0.011 \end{matrix}$
KEYWAY WIDTH	16	$\begin{matrix} 0 \\ -0.043 \end{matrix}$
KEYWAY DEPTH	6	$\begin{matrix} +0.2 \\ 0 \end{matrix}$



APPD BY	Y. S. KIM	UNIT	mm	SUBJECT	KS 180L	CAD PROJ \ FILE
CHKD BY	K. S. LEE	SCALE	1/8.5			XSDNKS\B2002AA08
CHKD BY	-----	PROJEC'N	3rd Angle	TITLE OUTLINE		
DSND BY	I. K. KIM	DATE	2008.10.22			
				REF. NO	B2002AA08	Sheet No. of
				DWG NO	227B2002AA08	Revision No. 0



Q'TY	DESCRIPTION	MATERIAL	DIMENSION	WEIGHT	PART NO.	REMARK	NO.
1	TERMINAL BLOCK	D4C29C					8
1	SEALING COMPOUND	CU					7
2	GRD. TERMINAL LUG	S45C					6
2	GRD. BOLT	S45C					5
4	T/B + FRAME BOLT	S45C					4
4	T/B + COVER BOLT	S45C					3
1	TERMINAL BOX COVER	FC15					2
1	TERMINAL BOX ASSEMBLY	FC15					1

APPD BY	UNIT	MM	SUBJECT	IEC 160/180FR d2G4	CAD PROJ. FILE
CHKD BY	SCALE	N/S			XSMOUT\7B1468LB
CHKD BY	PROJEC'N	3*48 (3rd Angle)	TITLE		
DSND BY	DATE	99.2.2	MAIN TERMINAL BOX		
APPD BY	DATE	99.2.2	REF. NO.	7B1470LB	Sheet No. of
CHKD BY	DATE	99.2.2	DWG NO.	227B1470LB	Revision No. 0
DSND BY	DATE	99.2.2	HYUNDAI HEAVY INDUSTRIES CO. LTD. ELECTRICAL ENGINEERING DIVISION		

REV	DATE	CONTENTS	REVD BY	CHKD BY	CHKD BY	APPD BY
1						
2						
3						
4						