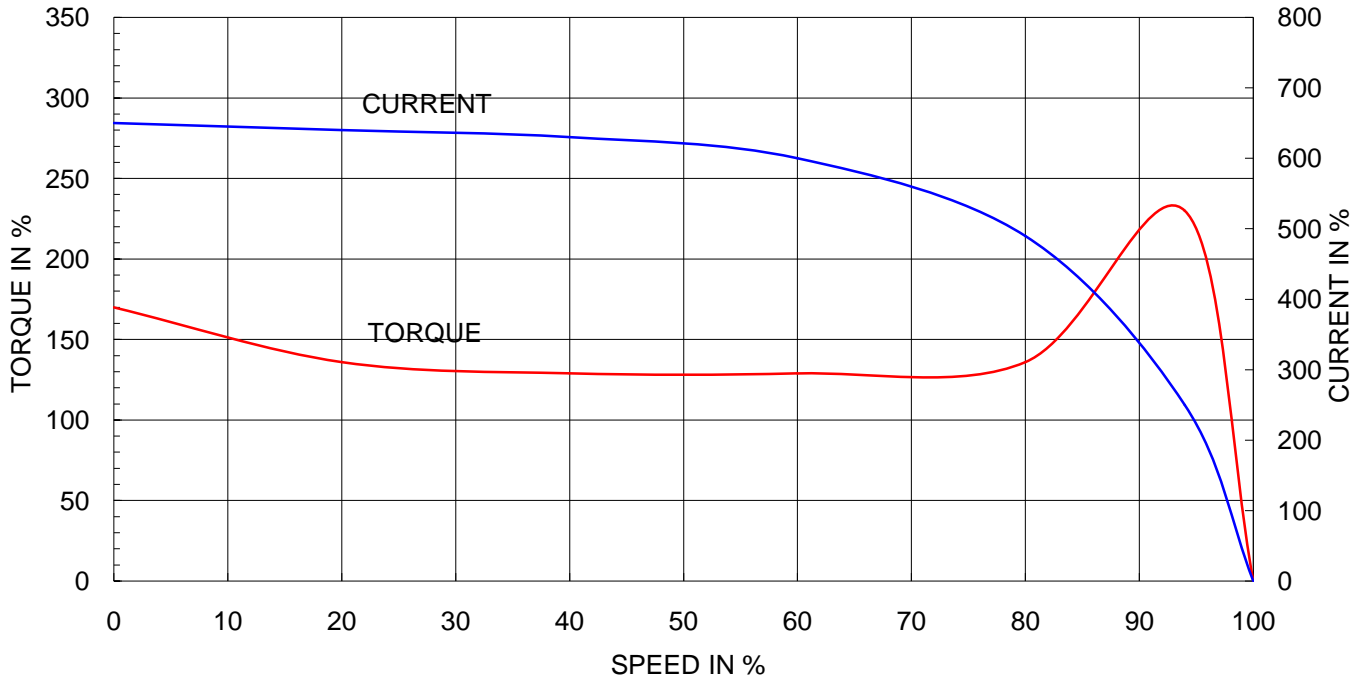


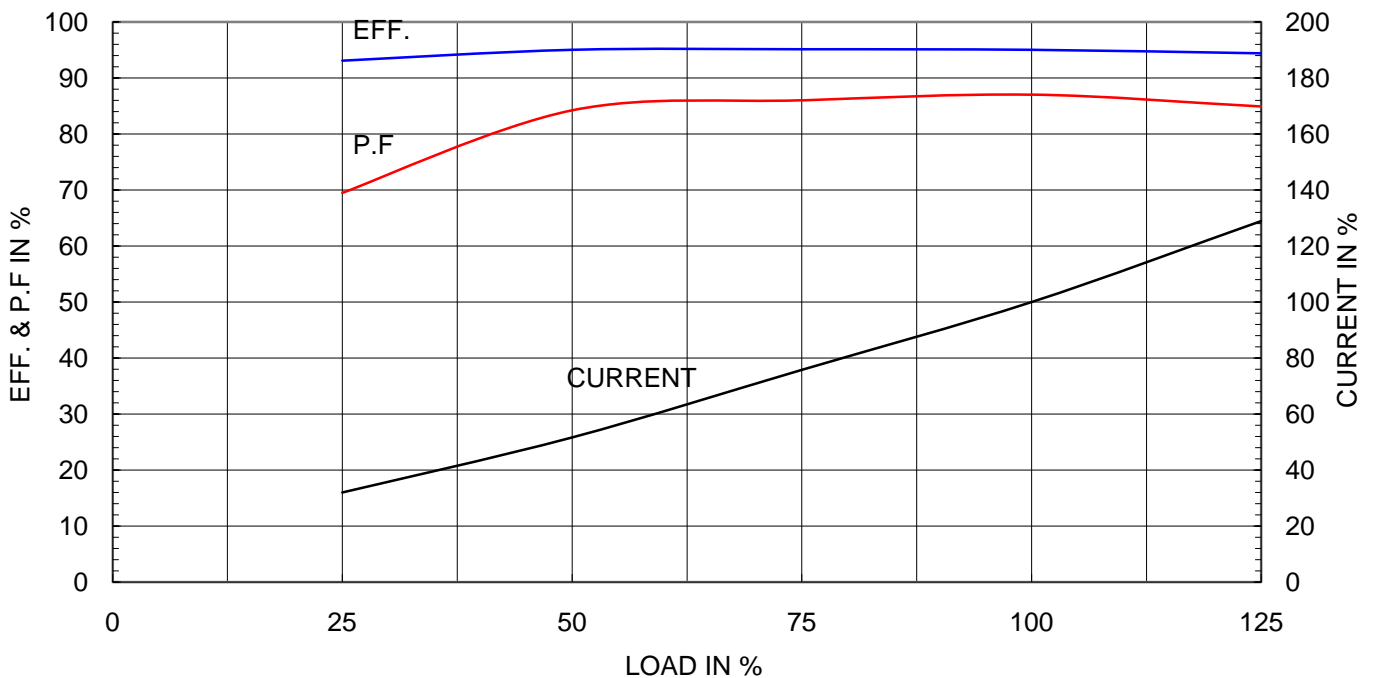
Type	:	GHB280X
Full Load Torque	:	131.5 Kg.m
Motor moment of Inertia (J)	:	7.288 Kg.m ²
Load moment of Inertia (J)	:	224.250 Kg.m ²

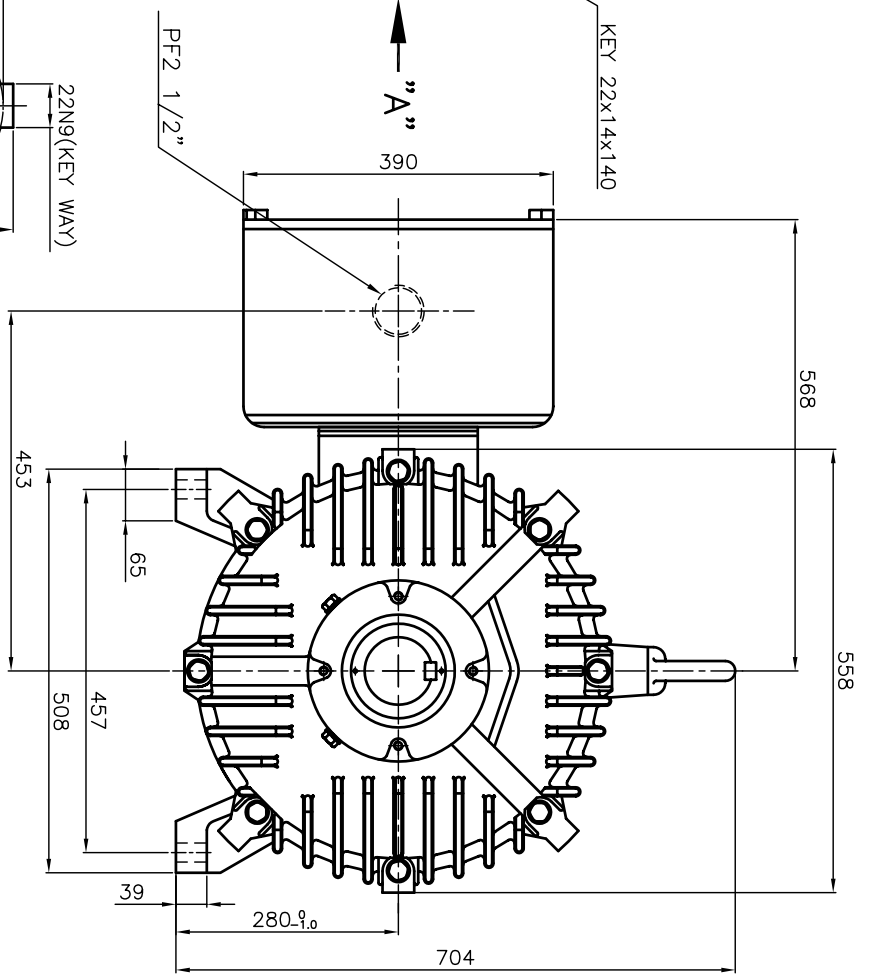
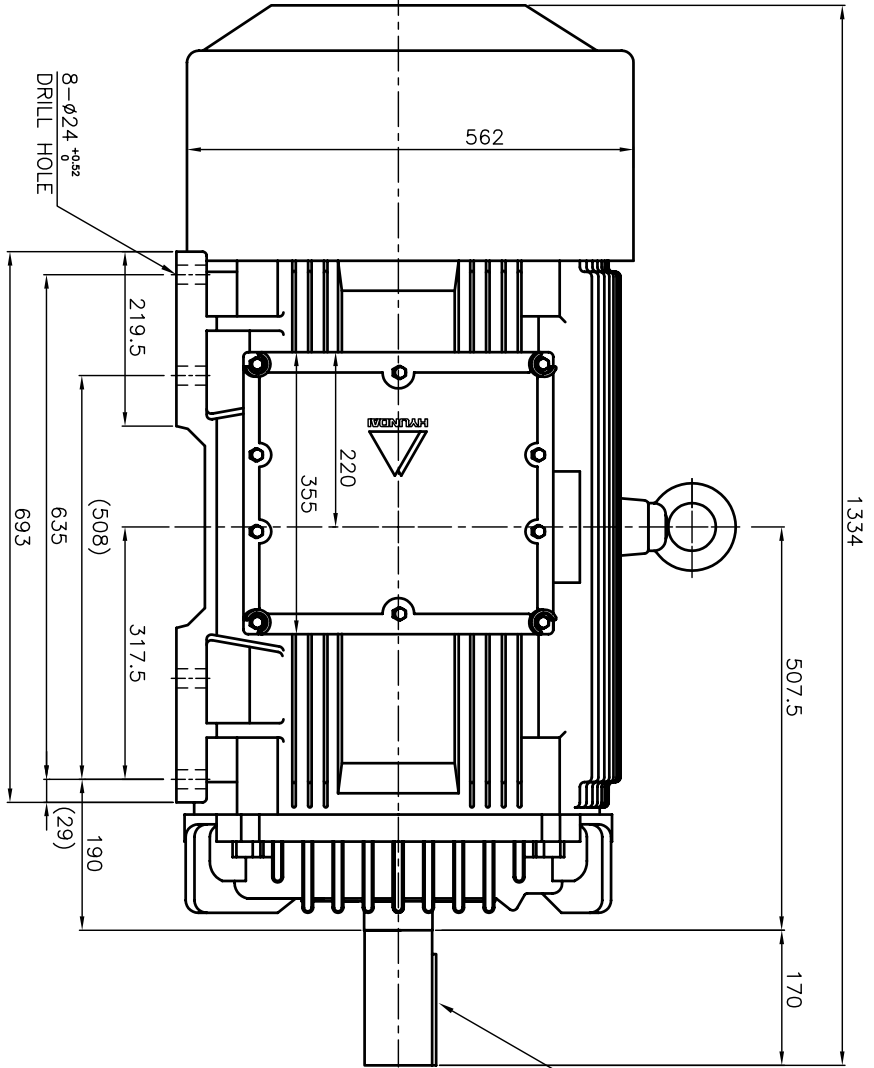
160 kW	6 P	60 Hz	
Speed at Full Load :		1185 RPM	
Rated Voltage	440V	380V	220V
Full Load Current	254.0A	294.1A	508.0A

SPEED VS TORQUE & CURRENT CURVE

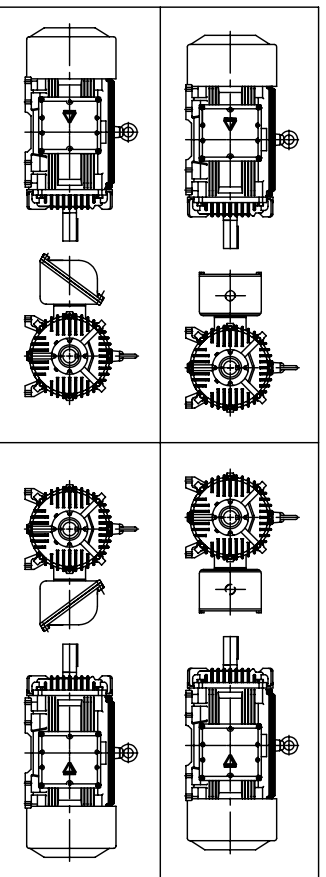


OUTPUT VS EFF., P.F & CURRENT CURVE

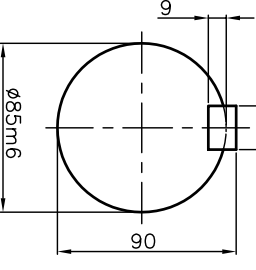




* TERMINAL BOX LOCATION



VIEW "A"



SCALE 2.5/1

(EXPLOSION CONSTRUCTION & IGNITION GROUP)

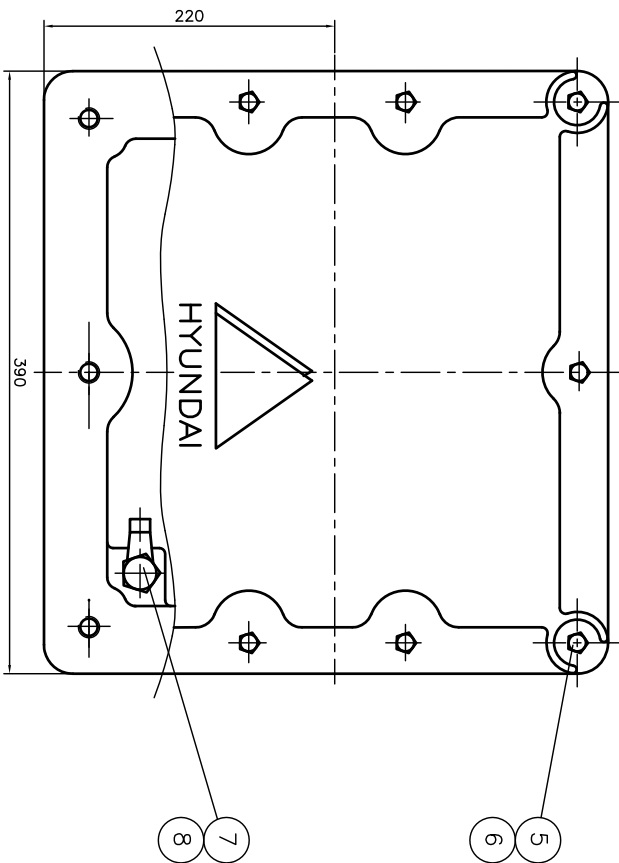
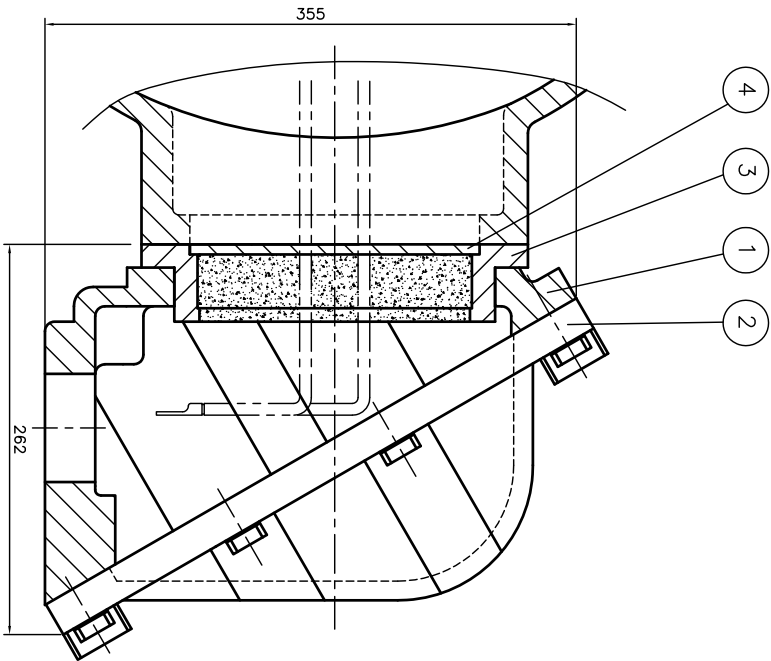
IB II B T4

▽	50S
▽▽	12.5S
▽▽▽	3.2S
▽▽▽▽	0.4S

REV	DATE	CONTENTS	REVD BY	CHKD BY	CHKD BY	APPD BY	1-4	±0.1	6-30	±0.5
1							1-4	±0.1	30-120	±0.8
							4-18	±0.2	120-315	±1.2
							18-63	±0.3	315-1000	±2.0
							63-250	±0.5	1000-	±3.0

Q'TY	DESCRIPTION	MATERIAL	DIMENSION	WEIGHT	PART NO.	REMARK	NO.
APPD BY	강경중		UNIT	MM			
CHKD BY	김옥진		SCALE	1/7			
CHKD BY	김홍선		PROJEC'N	3rd Angle			
DSND BY	김형규		DATE	2005.06.07			
TITLE		SUBJECT		DWG NO		REF. NO	
OUTLINE DIMENSION		KS FR.280LL, PTYPE, EP		GJ8XAP-02		Sheet No. of	
		THREE-PHASE INDUCTION MOTOR				Revision No.	





QTY	DESCRIPTION	MATERIAL	DIMENSION	WEIGHT	PART NO.	REMARK	NO.
1	HEX. BOLT	BRONZE	M10				8
1	EARTH TERMINAL LUG	STD					7
10	SPRING WASHER	SUP-3					6
10	HEX. BOLT	S45C	M12				5
1	GUIDE PLATE	E.C.P					4
1	ADAPTER	FC25					3
1	TERMINAL BOX COVER	FC25					2
1	TERMINAL BOX BODY	FC25					1

APRD BY	UNIT	MM	SUBJECT	H/LAB FR-250,280 (2234)	SCALE	NONE	TITLE	TERMINAL BOX ASS'Y
CHKD BY	SCALE	NONE	PROJECN	3-24(3rd Angle)	DATE	98.10.30	REF. NO.	
DSND BY	KIM JONG SEON		DATE	98.10.30	DWG NO.	3M-036962	Sheet No.	
								of
								Revision No.

REV	DATE	CONTENTS	REQD BY	CHKD BY	APRD BY
1					
2					
3					
4					

