

Model No.or RFQ No.		Item No.		Rev. No. [0]			
Project Name		Project No.		Quantity sets			
GENERAL SPECIFICATION			PERFORMANCE DATA				
Frame Size	280LL		Rated Output	160 kW 214 HP			
Type	HS-160/4		Number of Poles	4			
Enclosure(Protection)	Explosion Proof (IP55)		Rotor Type	Squirrel Cage			
Method of Cooling	IC411(FC)		Starting Method*	<input checked="" type="checkbox"/> D.O.L <input type="checkbox"/> Y- Δ			
Rated Frequency	60 Hz		Rated Voltage	440 V	380 V 220 V		
Number of Phases	3		Current	Full Load	251.1 A 290.8 A 502.3 A		
Insulation Class	<input checked="" type="checkbox"/> F <input type="checkbox"/> B <input type="checkbox"/> H			Locked-rotor**	670 % 670 % 670 %		
Temp. Rise at full load (by resistance method)			Efficiency				
at 1.0 S.F 80 deg. C			50% Load 94.6 %				
Motor Location <input checked="" type="checkbox"/> Indoor <input type="checkbox"/> Outdoor			75% Load 95.1 %				
Altitude Less than 1000 meter			100% Load 95.0 %				
Relative Humidity Less than 80 %			Power Factor(p.u)				
Ambient Temp. 40 deg. C (Max.)			50% Load 0.810				
Duty Type Continuous (S1)			75% Load 0.875				
Service Factor 1.00			100% Load 0.880				
Mounting <input checked="" type="checkbox"/> B3 <input type="checkbox"/> B5 <input type="checkbox"/> V1 <input type="checkbox"/> B3/B5			Speed at Full Load 1785 r.p.m				
Bearing	Type	Anti-Friction		Torque			
	DE/N-DE	NU320M / 6318C3		Full Load 87.3 kg·m			
	Lubricant	Grease(Gadus S2 V 100 2)		Locked-rotor** 170 %			
External Thrust Not applicable			Breakdown** 230 %				
Coupling Method <input checked="" type="checkbox"/> Direct <input type="checkbox"/> V-Belt			Moment of Inertia (J)				
Shaft Extension <input checked="" type="checkbox"/> Single <input type="checkbox"/> Double			Load(Max.) 97.250 kg·m ²				
Terminal Box	Main	<input type="checkbox"/> Steel <input checked="" type="checkbox"/> Cast Iron		Motor 3.653 kg·m ²			
	Aux.	<input type="checkbox"/> Yes <input checked="" type="checkbox"/> No		Sound Pressure Level (No-load & mean value at 1m from motor)			
Location Refer to Outline Drawing			85 dB(A)				
Application			Vibration 2.2 mm/sec (r.m.s)				
Area classification Hazardous			Permissible number of consecutive starts				
Type of Ex-Protection Ex d II T4			Cold 3 times				
Applicable Standard KS,IEC			Hot 2 times				
			Paint	Munsell No.	4.0PB5.4/5.5(VL-451)		
ACCESSORIES			SUBMITTAL DRAWING				
			Outline Dimension Drawing \ Motor Weight(Approx.)				
			B3	GJ8XAP02	1250 kg		
			B5	0	0 kg		
			V1		kg		
			B3/B5	0	0 kg		
			Main T-Box Ass'y	3M-036962			
SPARE PARTS			REMARK				
			High Efficiency				
			Date	DSND	CHKD	CHKD	APPD
			2010-05-28	R.G. KIM	O.J. KIM	J.H. KIM	K.J. KANG

Note: Others not mentioned in this data sheet shall be in accordance with maker standard.

Above technical data are only design values and shall be guaranteed with tolerance of applicable standard.

Inspection and performance test shall be maker standard, if not mentioned.

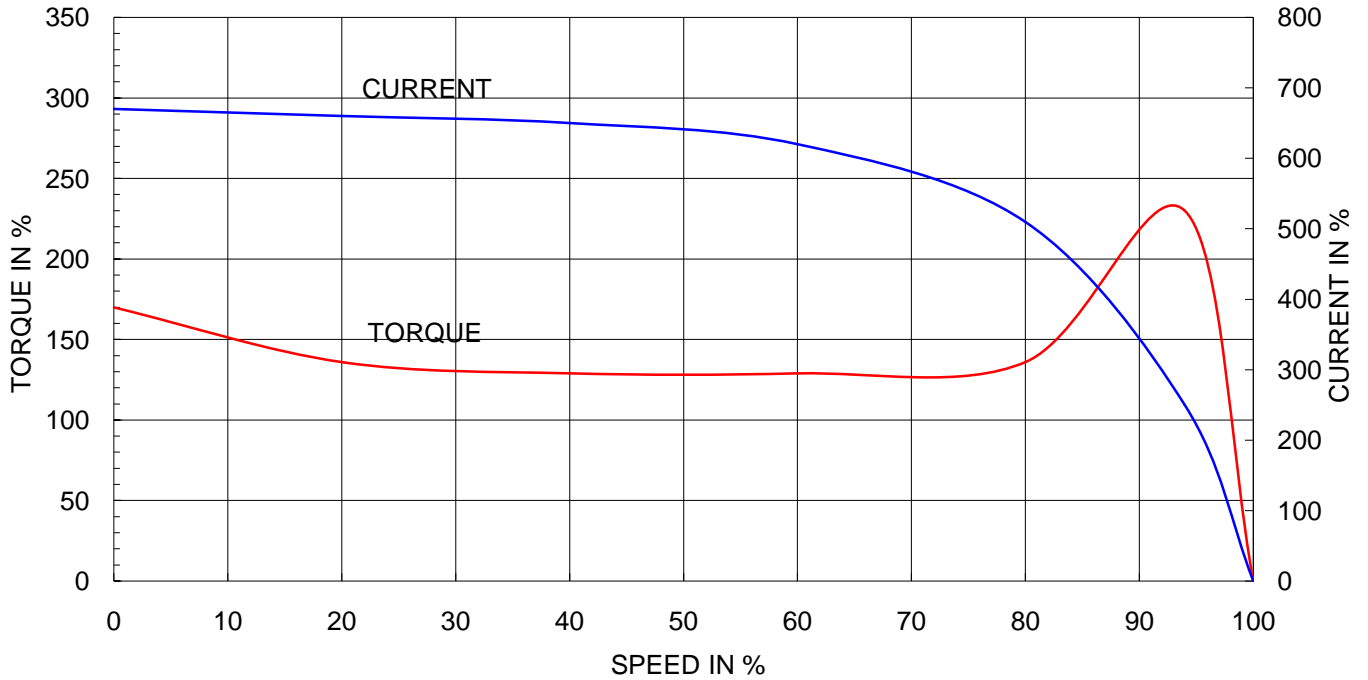
* In case of Inverter-Fed Motor, performance data is based on sine wave tests.

** Data is based on when the motor is supplied at rated voltage & frequency, and the data is expressed as a percentage of full-load value.

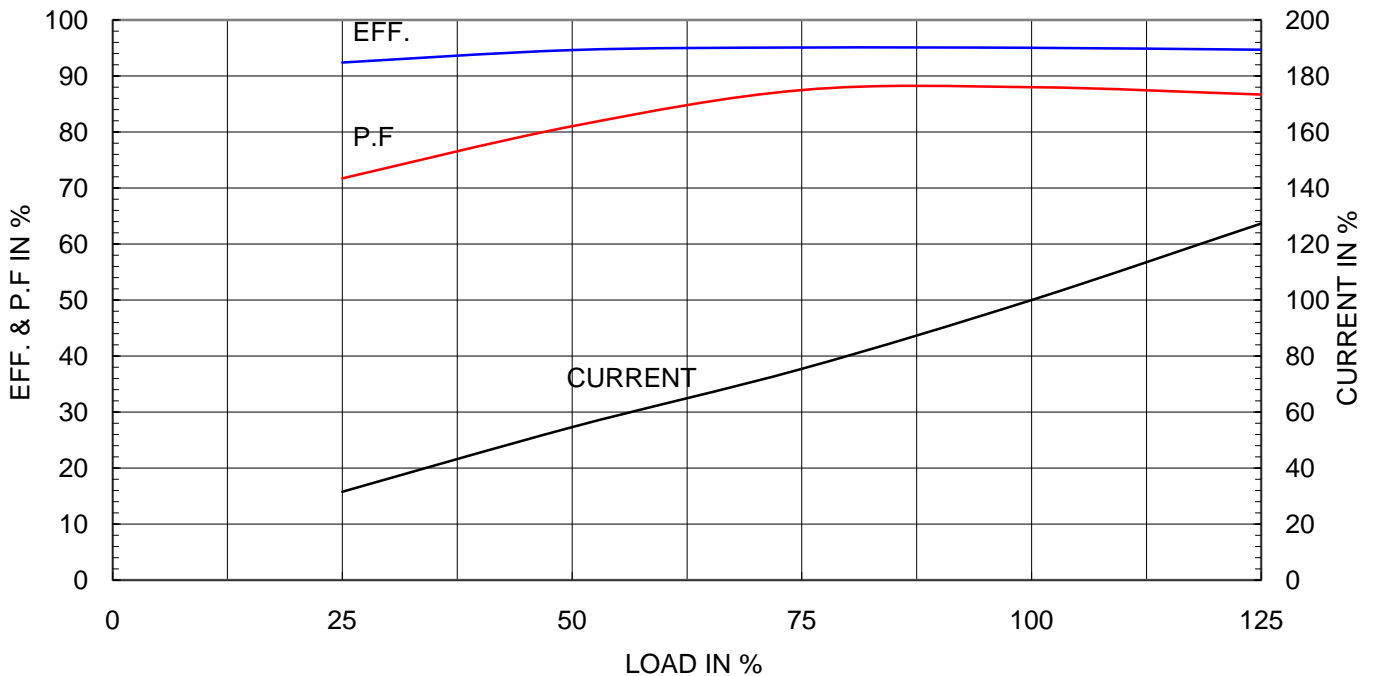
Type	:	GHB280L
Full Load Torque	:	87.3 Kg.m
Motor moment of Inertia (J)	:	3.653 Kg.m ²
Load moment of Inertia (J)	:	97.250 Kg.m ²

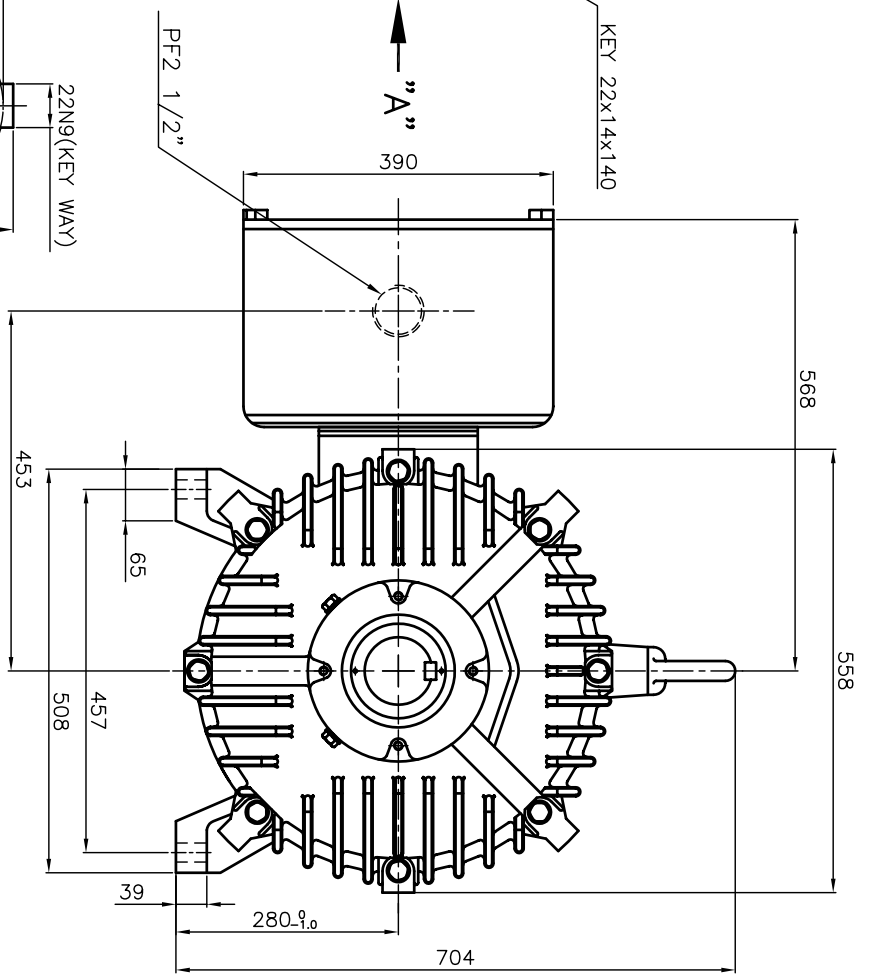
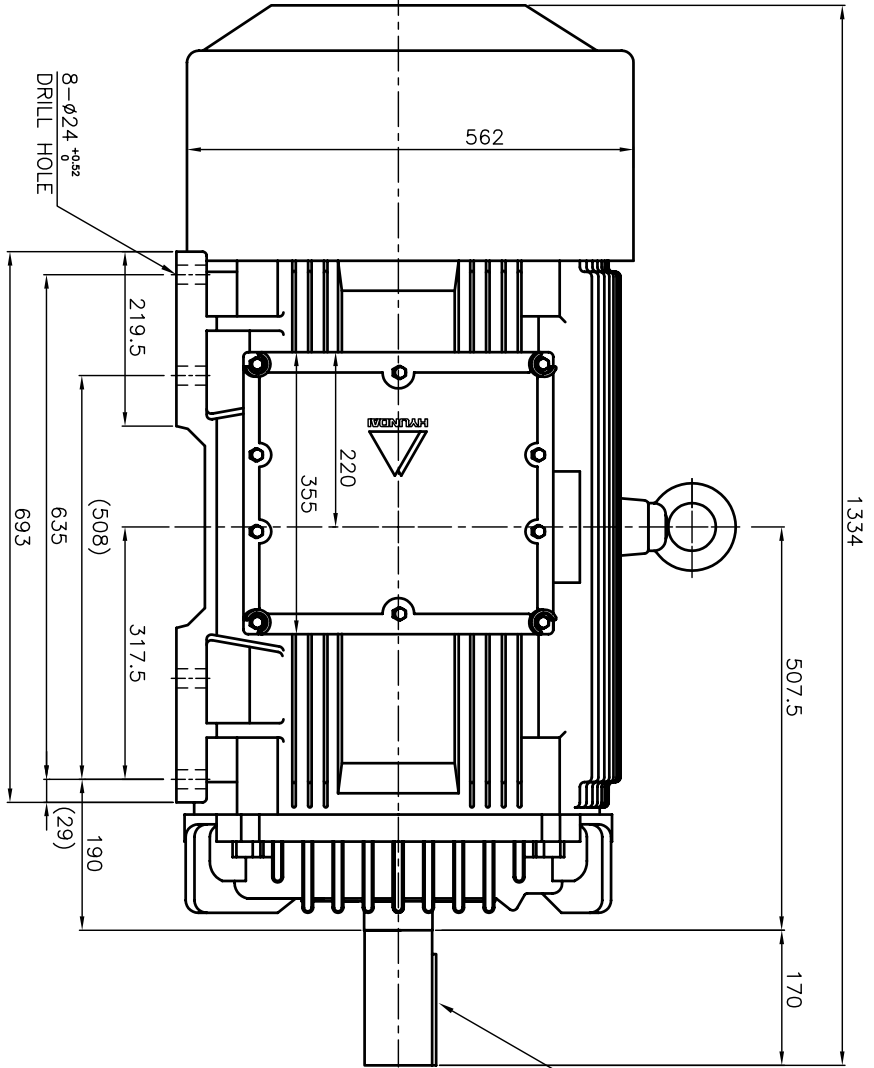
160 kW	4 P	60 Hz	
Speed at Full Load :		1785 RPM	
Rated Voltage	440V	380V	220V
Full Load Current	251.1A	290.8A	502.3A

SPEED VS TORQUE & CURRENT CURVE

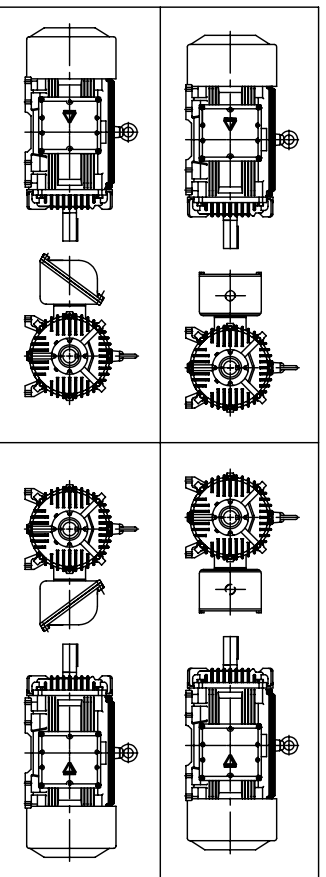


OUTPUT VS EFF., P.F & CURRENT CURVE

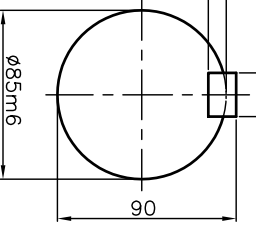




* TERMINAL BOX LOCATION



VIEW "A"



SCALE 2.5/1

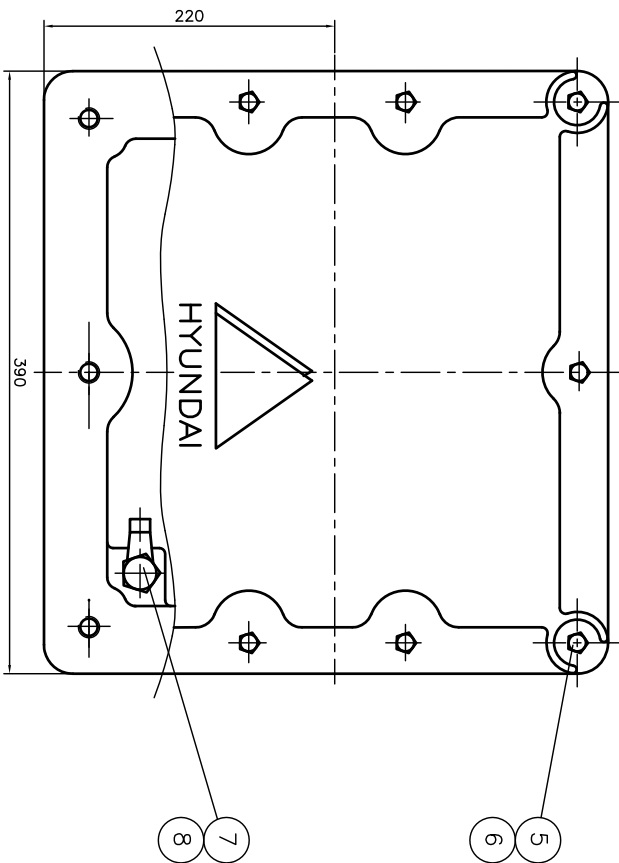
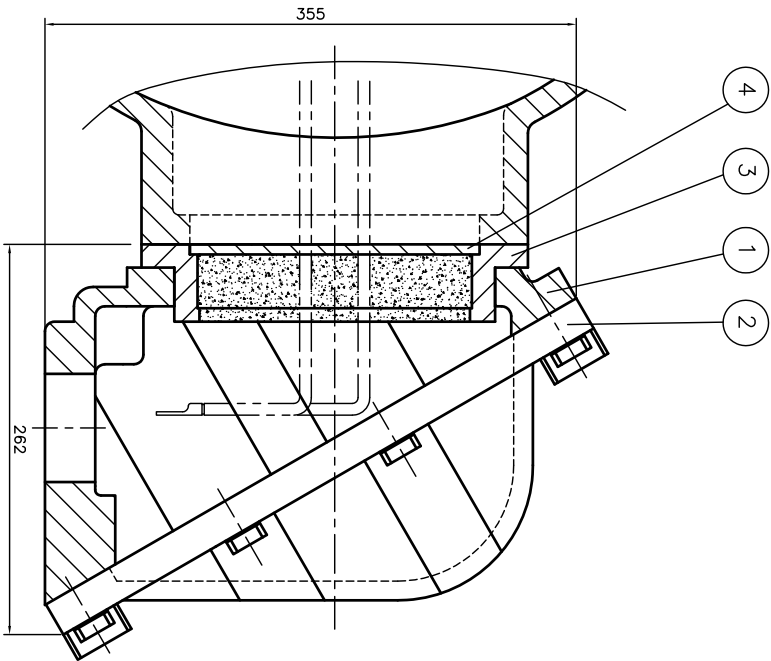
(EXPLOSION CONSTRUCTION & IGNITION GROUP)

III B T4

▽	50S
▽▽	12.5S
▽▽▽	3.2S
▽▽▽▽	0.4S

REV	DATE	CONTENTS	REVD BY	CHKD BY	CHKD BY	APPD BY	1-4	5-10	11-15	16-20	21-25
1							±0.1	±0.1	±0.2	±0.3	±0.5
2							±0.1	±0.1	±0.2	±0.3	±0.5
3							±0.1	±0.1	±0.2	±0.3	±0.5
4							±0.1	±0.1	±0.2	±0.3	±0.5
5							±0.1	±0.1	±0.2	±0.3	±0.5

Q'TY	DESCRIPTION	MATERIAL	DIMENSION	WEIGHT	PART NO.	REMARK	NO.
APPD BY	강경중						
CHKD BY	김옥진						
CHKD BY	김홍선						
DSND BY	김형규						
DATE	2005.06.07						
TITLE	OUTLINE DIMENSION						
SUBJECT	THREE-PHASE INDUCTION MOTOR						
REF. NO						Sheet No. of	
DWG NO	GJ8XAP-02					Revision No.	



QTY	DESCRIPTION	MATERIAL	DIMENSION	WEIGHT	PART NO.	REMARK	NO.
1	HEX. BOLT	BRONZE	M10				8
1	EARTH TERMINAL LUG	STD					7
10	SPRING WASHER	SUP-3					6
10	HEX. BOLT	S45C	M12				5
1	GUIDE PLATE	E.C.P					4
1	ADAPTER	FC25					3
1	TERMINAL BOX COVER	FC25					2
1	TERMINAL BOX BODY	FC25					1

APRD BY	UNIT	MM	SUBJECT	H/LAB FR-250,280 (2234)	SCALE	NONE	TITLE	TERMINAL BOX ASS'Y
CHKD BY	SCALE	NONE	PROJECN	3-24(3rd Angle)	DATE	98.10.30	REF. NO.	
DSND BY	KIM JONG SEON	DATE	98.10.30	DWG NO.	3M-036962	Sheet No.	of	Revision No.

REV	DATE	CONTENTS	REQD BY	CHKD BY	APRD BY
1					
2					
3					
4					

