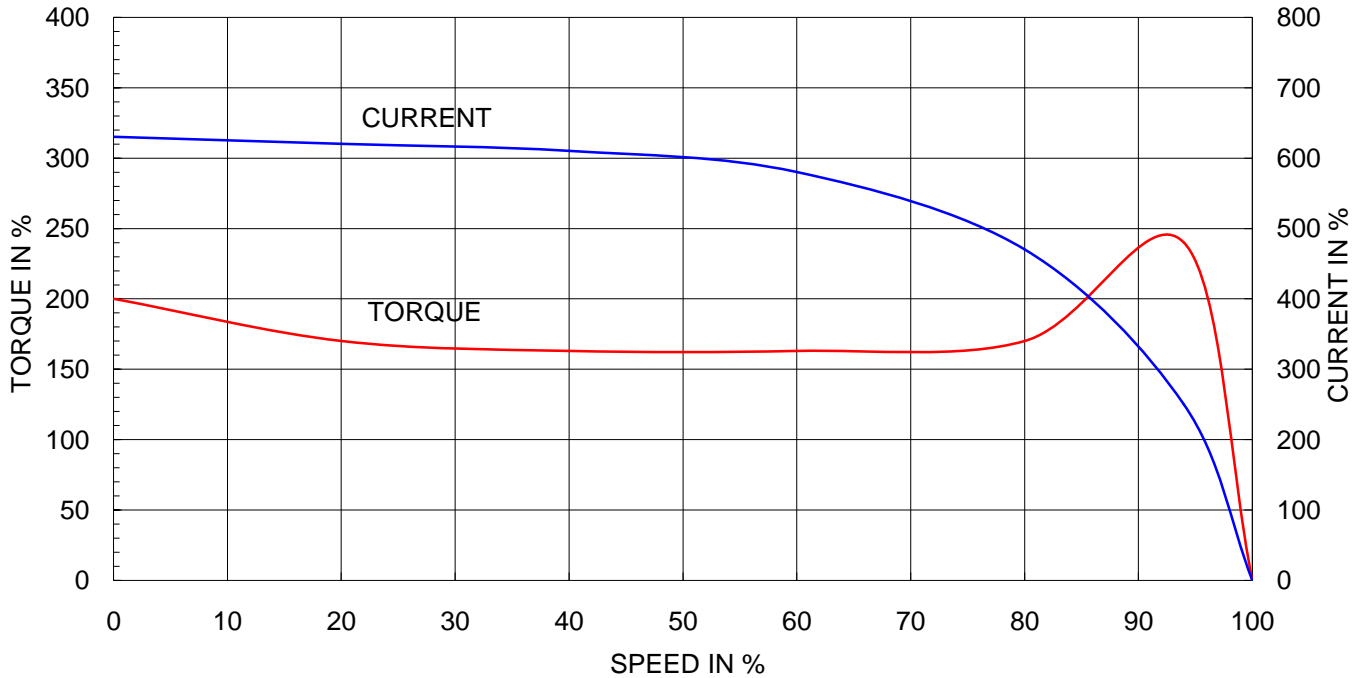




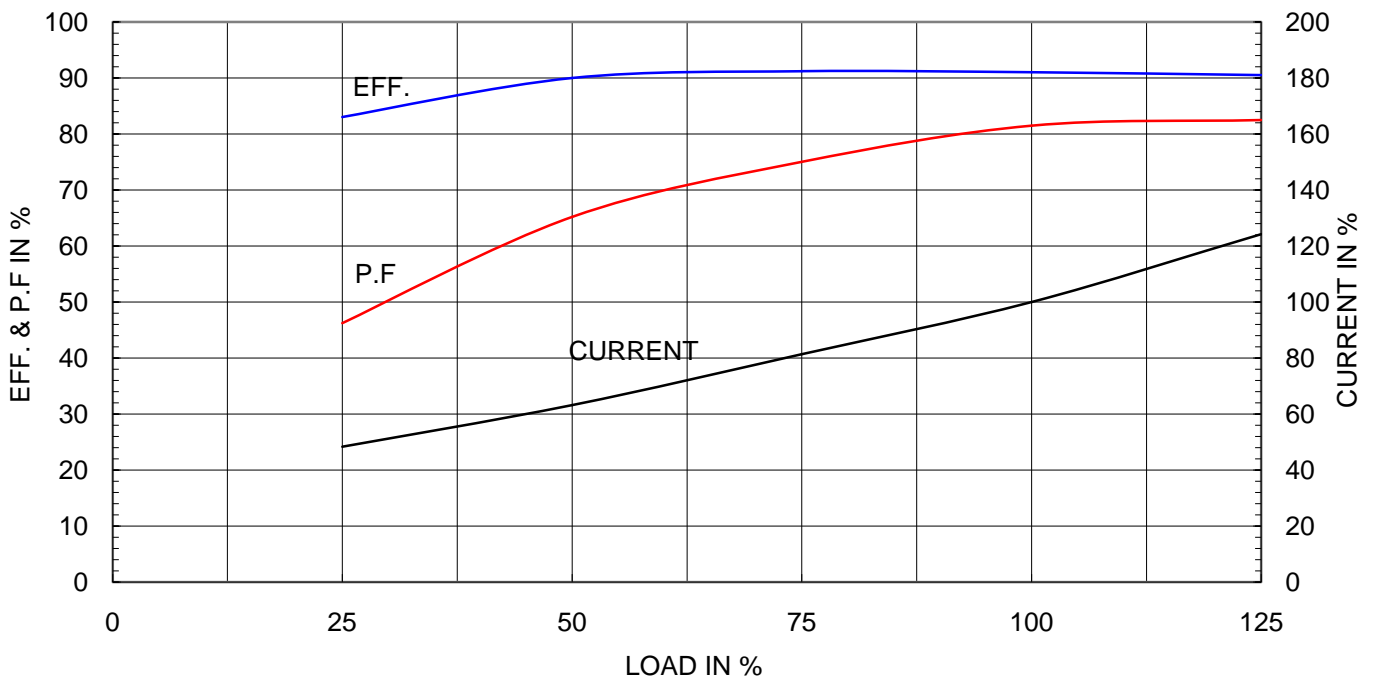
Type	:	HL-XP
Full Load Torque	:	8.3 Kg.m
Motor moment of Inertia (J)	:	0.090 Kg.m <sup>2</sup>
Load moment of Inertia (J)	:	12.750 Kg.m <sup>2</sup>

15 kW	4 P	60 Hz	
Speed at Full Load :		1770 RPM	
Rated Voltage	440V	380V	220V
Full Load Current	26.5A	30.7A	53.1A

SPEED VS TORQUE & CURRENT CURVE



OUTPUT VS EFF., P.F & CURRENT CURVE





# TEFC

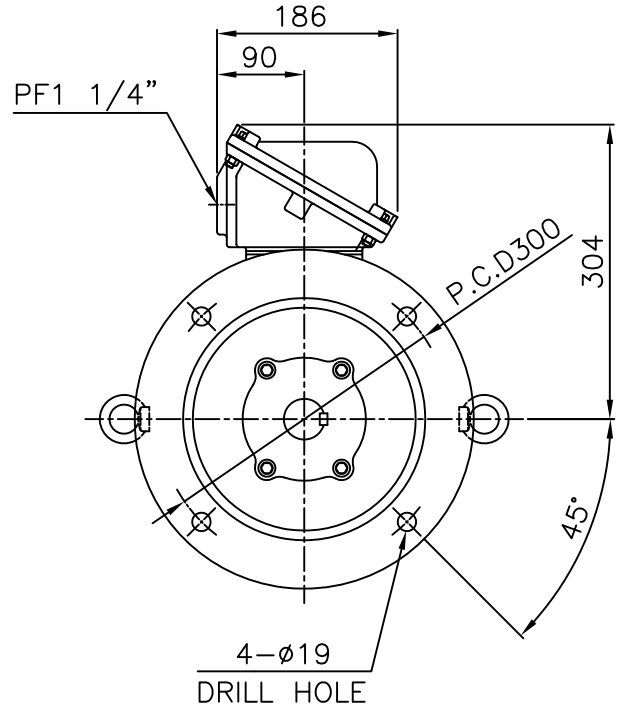
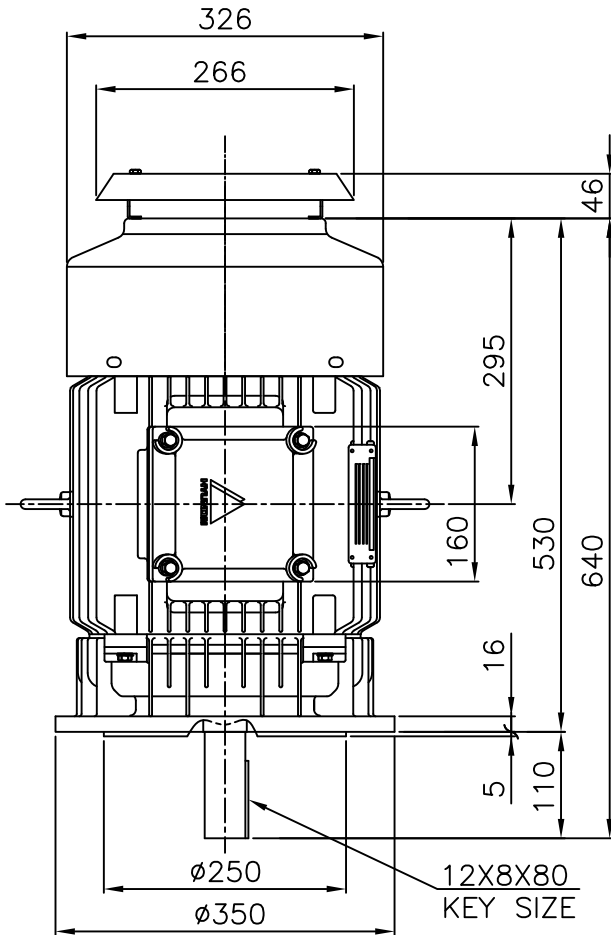
THREE PHASE INDUCTION MOTOR

TYPE

HL, HLS

CAST IRON FRAME

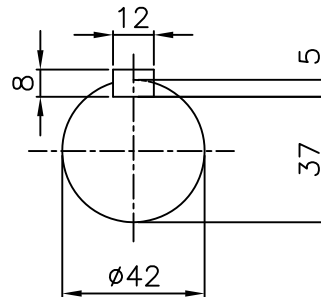
## Exd II



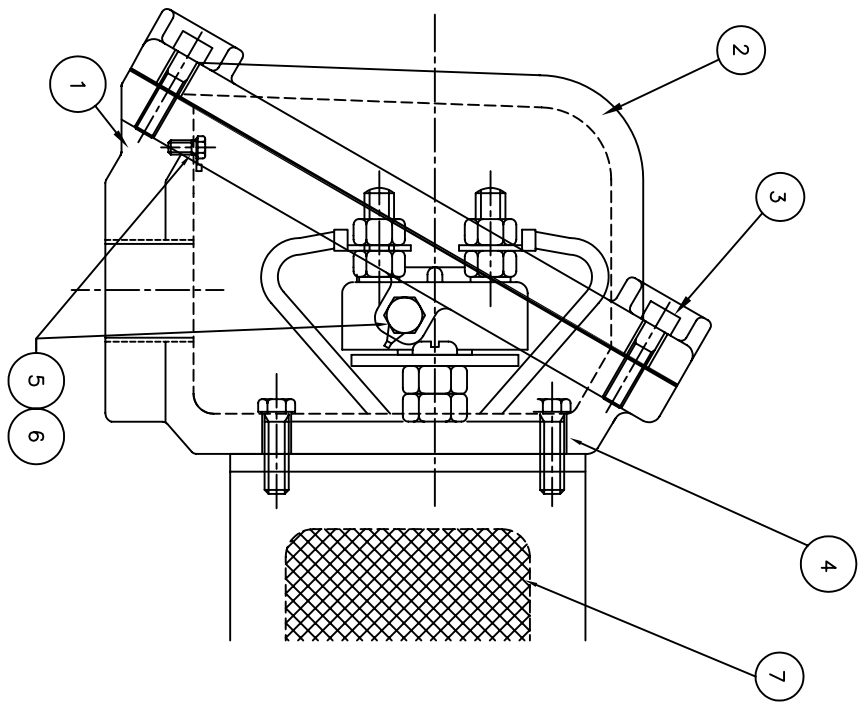
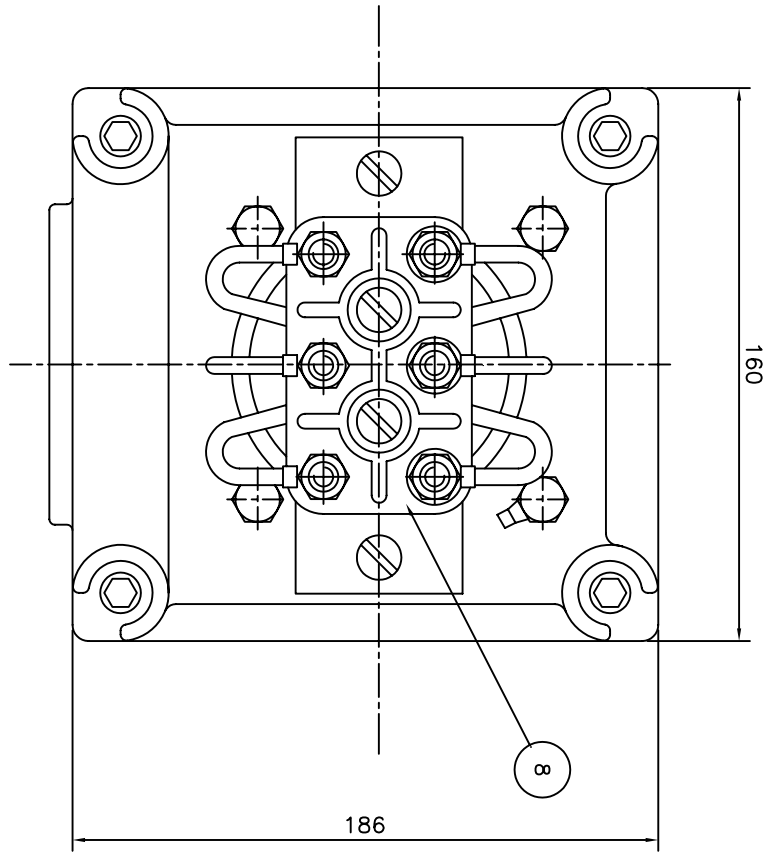
NOTE

1.TOLERANCE :

FLANGE HOLES	$\phi 19$	$+0.43$ $0$
RABBET DIAMETER	$\phi 250$	$+0.016$ $-0.013$
SHAFT DIAMETER	$\phi 42$	$+0.018$ $+0.002$
KEYWAY WIDTH	12	$0$ $-0.043$
KEYWAY DEPTH	5	$+0.2$ $0$



APPD BY	Y. S. KIM	UNIT	mm	SUBJECT	KS 160L	CAD PROJ \ FILE
CHKD BY	K. S. LEE	SCALE	1/8			XSDNKS\B2062AA06
CHKD BY	-----	PROJEC'N	3rd Angle	TITLE OUTLINE		
DSND BY	I. K. KIM	DATE	2008.10.22			
				REF. NO	B2062AA06	Sheet No. of
				DWG NO	2272062AA06	Revision No. 0



Q'TY	DESCRIPTION	MATERIAL	DIMENSION	WEIGHT	PART NO.	REMARK	NO.
1	TERMINAL BLOCK	D4C29C					8
1	SEALING COMPOUND	CU					7
2	GRD. TERMINAL LUG	S45C					6
2	GRD. BOLT	S45C					5
4	T/B + FRAME BOLT	S45C					4
4	T/B + COVER BOLT	S45C					3
1	TERMINAL BOX COVER	FC15					2
1	TERMINAL BOX ASSEMBLY	FC15					1

APPD BY	UNIT	MATERIAL	DIMENSION	WEIGHT	PART NO.	REMARK	NO.
CHKD BY	SCALE	N/S	SUBJECT	IEC 160/180FR d2G4		CAD PROJ \FILE XSMOUT\7B1468LB	
CHKD BY	PROJEC'N	3*48 (3rd Angle)	TITLE	MAIN TERMINAL BOX			
DSND BY	DATE	99.2.2	REF. NO	7B1470LB	Sheet No.	of	
LEE E.J.			DWG NO	227B1470LB	Revision No.	0	

REV	DATE	CONTENTS	REVD BY	CHKD BY	CHKD BY	APPD BY
1						
2						
3						
4						

**HYUNDAI**  
HEAVY INDUSTRIES CO. LTD.  
ELECTRICAL ENGINEERING DIVISION