



# AC INDUCTION MOTOR DATA SHEET

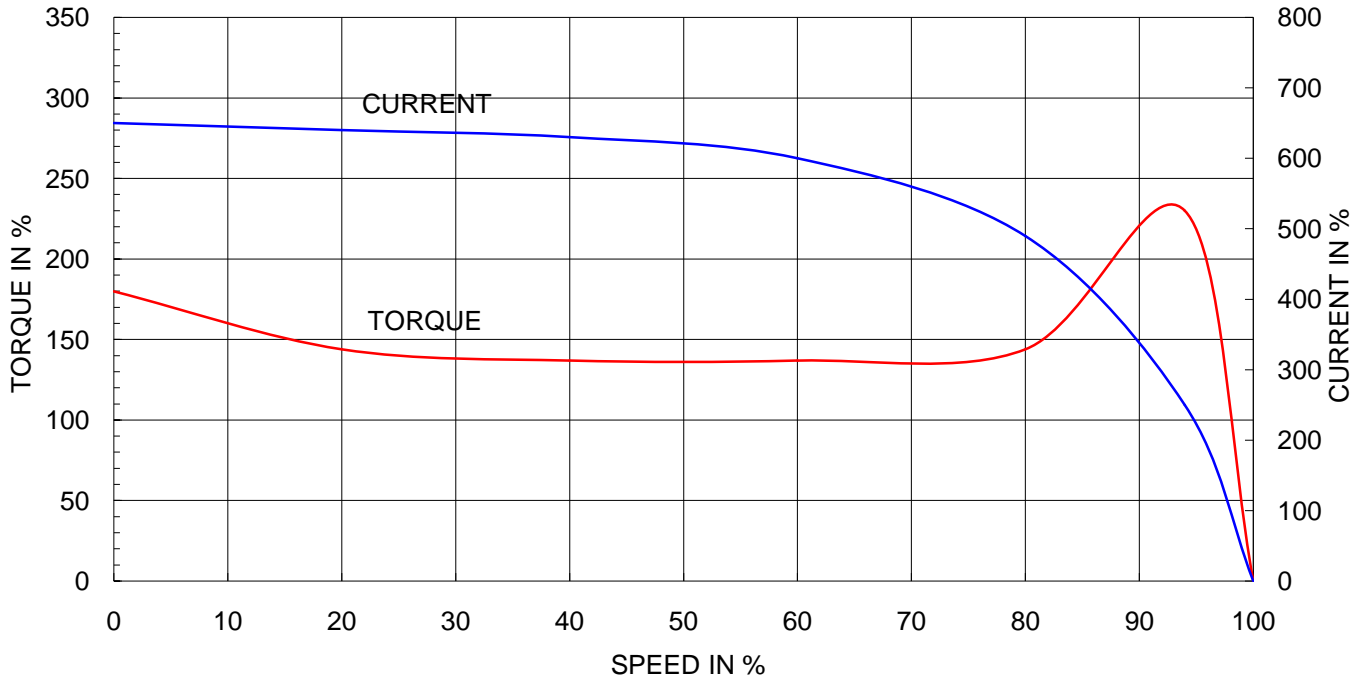
Model No. or RFQ No.		Item No.		Rev. No. [ 0 ]			
Project Name		Project No.		Quantity sets			
GENERAL SPECIFICATION			PERFORMANCE DATA				
Frame Size	280LL		Rated Output	132 kW 175 HP			
Type	HS-132/6		Number of Poles	6			
Enclosure(Protection)	Explosion Proof ( IP55 )		Rotor Type	Squirrel Cage			
Method of Cooling	IC411(FC)		Starting Method*	<input checked="" type="checkbox"/> D.O.L <input type="checkbox"/> Y- Δ			
Rated Frequency	60 Hz		Rated Voltage	440 V	380 V 220 V		
Number of Phases	3		Current	Full Load	209.6 A 242.7 A 419.1 A		
Insulation Class	<input checked="" type="checkbox"/> F <input type="checkbox"/> B <input type="checkbox"/> H		Locked-rotor**	650 % 650 % 650 %			
Temp. Rise at full load (by resistance method)			Efficiency				
at 1.0 S.F    80 deg. C			50% Load    95.0 %				
Motor Location <input type="checkbox"/> Indoor <input checked="" type="checkbox"/> Outdoor			75% Load    95.1 %				
Altitude    Less than 1000 meter			100% Load    95.0 %				
Relative Humidity    Less than 80 %			Power Factor(p.u)				
Ambient Temp.    40 deg. C (Max.)			50% Load    0.750				
Duty Type    Continuous ( S1 )			75% Load    0.851				
Service Factor    1.00			100% Load    0.870				
Mounting <input type="checkbox"/> B3 <input type="checkbox"/> B5 <input checked="" type="checkbox"/> V1 <input type="checkbox"/> B3/B5			Speed at Full Load    1185 r.p.m				
Bearing	Type	Anti-Friction		Torque			
	DE/N-DE	NU320M / 6318C3		Full Load    108.5 kg·m			
	Lubricant	Grease(Gadus S2 V 100 2)		Locked-rotor**    180 %			
External Thrust    Not applicable			Breakdown**    230 %		Moment of Inertia (J)		
Coupling Method <input checked="" type="checkbox"/> Direct <input type="checkbox"/> V-Belt			Load(Max.)    224.250 kg·m²		Motor    5.753 kg·m²		
Shaft Extension <input checked="" type="checkbox"/> Single <input type="checkbox"/> Double			Sound Pressure Level (No-load & mean value at 1m from motor)				
Terminal Box	Main	<input type="checkbox"/> Steel <input checked="" type="checkbox"/> Cast Iron		80 dB(A)			
	Aux.	<input type="checkbox"/> Yes <input checked="" type="checkbox"/> No		Vibration    2.2 mm/sec (r.m.s)			
	Location	Refer to Outline Drawing					
Application			Permissible number of consecutive starts				
Area classification    Hazardous			Cold    3 times				
Type of Ex-Protection    Ex d II T4			Hot    2 times				
Applicable Standard    KS,IEC			Paint	Munsell No.    4.0PB5.4/5.5(VL-451)			
ACCESSORIES			SUBMITTAL DRAWING				
			Outline Dimension Drawing \ Motor Weight(Approx.)				
			B3		kg		
			B5	0	0 kg		
			V1	GJ8XPP02	1320 kg		
			B3/B5	0	0 kg		
			Main T-Box Ass'y	3M-036962			
SPARE PARTS			REMARK				
			High Efficiency				
			Date	DSND	CHKD	CHKD	APPD
			2010-05-28	R.G. KIM	O.J. KIM	J.H. KIM	K.J. KANG

Note: Others not mentioned in this data sheet shall be in accordance with maker standard.  
 Above technical data are only design values and shall be guaranteed with tolerance of applicable standard.  
 Inspection and performance test shall be maker standard, if not mentioned.  
 \* In case of Inverter-Fed Motor, performance data is based on sine wave tests.  
 \*\* Data is based on when the motor is supplied at rated voltage & frequency, and the data is expressed as a percentage of full-load value.

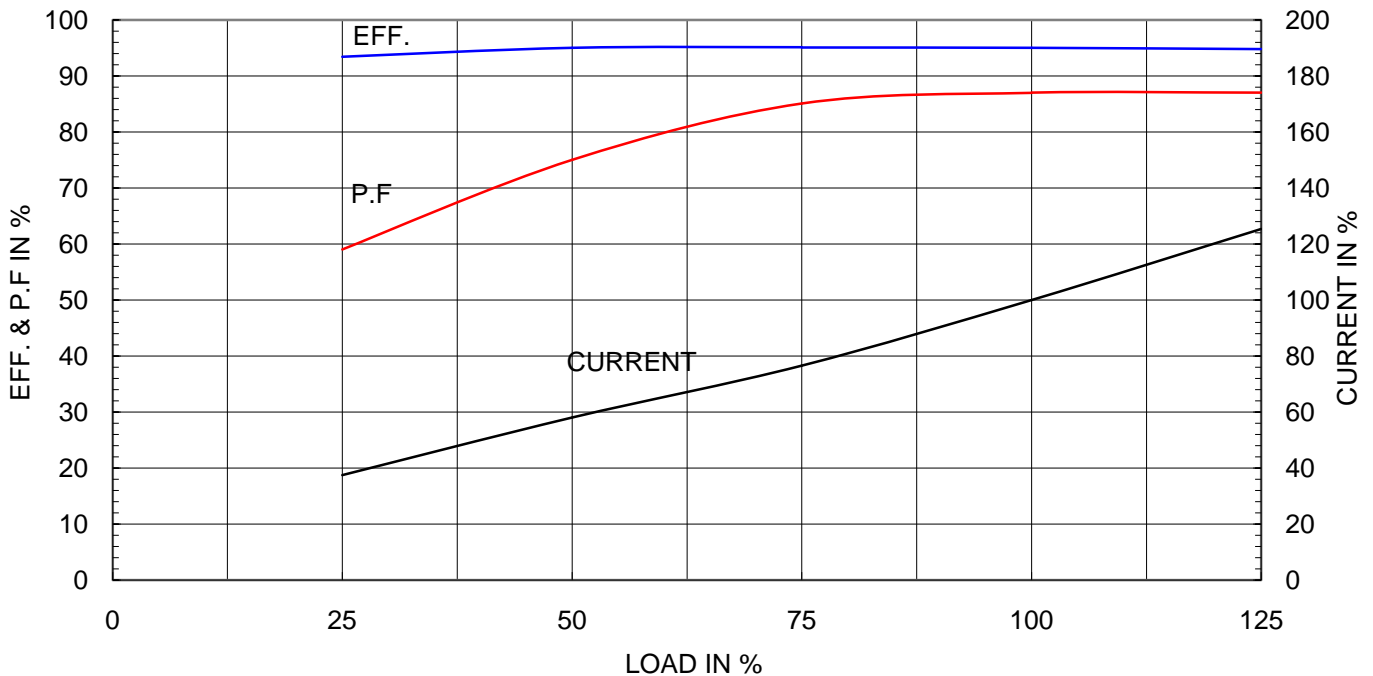
Type	:	GHB280L
Full Load Torque	:	108.5 Kg.m
Motor moment of Inertia (J)	:	5.753 Kg.m <sup>2</sup>
Load moment of Inertia (J)	:	224.250 Kg.m <sup>2</sup>

132 kW	6 P	60 Hz	
Speed at Full Load :		1185 RPM	
Rated Voltage	440V	380V	220V
Full Load Current	209.6A	242.7A	419.1A

SPEED VS TORQUE & CURRENT CURVE



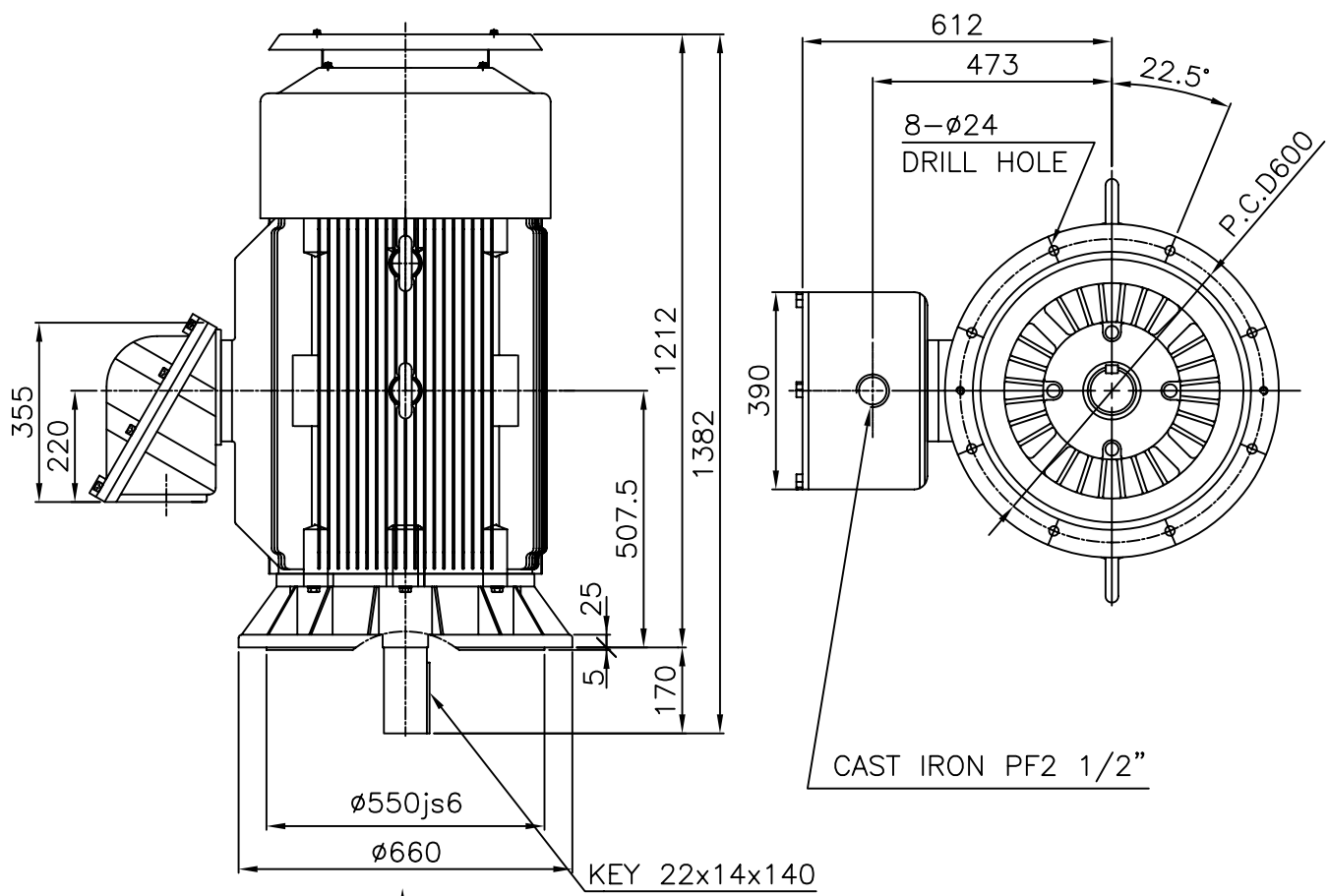
OUTPUT VS EFF., P.F & CURRENT CURVE



본 도면은 현대중공업(주) 재산이므로 허가없이 복사할 수 없습니다 (취급유의)

THIS DRAWING IS PROPRIETARY TO HHI. NO PART OF THIS DRAWING MAYBE REPRODUCED WITHOUT THE PERMISSION OF HHI.

		<h1>TEFC</h1>		<b>TYPE</b>	GHB280X
		<b>THREE PHASE INDUCTION MOTOR</b>			CAST IRON FRAME

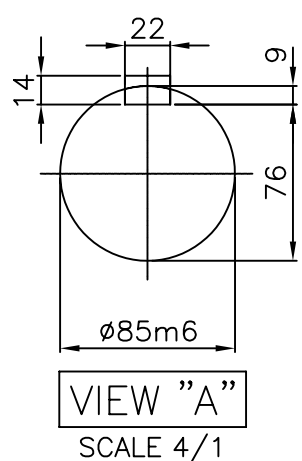


**NOTE**

1.TOLERANCE :

RABBET DIAMETER	ø550 ±0.022
SHAFT DIAMETER	ø85 +0.035 / +0.013
KEYWAY WIDTH	22 -0.022 / -0.074
KEYWAY DEPTH	9 +0.2 / 0
KEY WIDTH	22 0 / -0.052
KEY HEIGHT	14 0 / -0.110

2.Ex d IIB T4 : (EXPLOSION CONSTRUCTION & IGNITION GROUP)



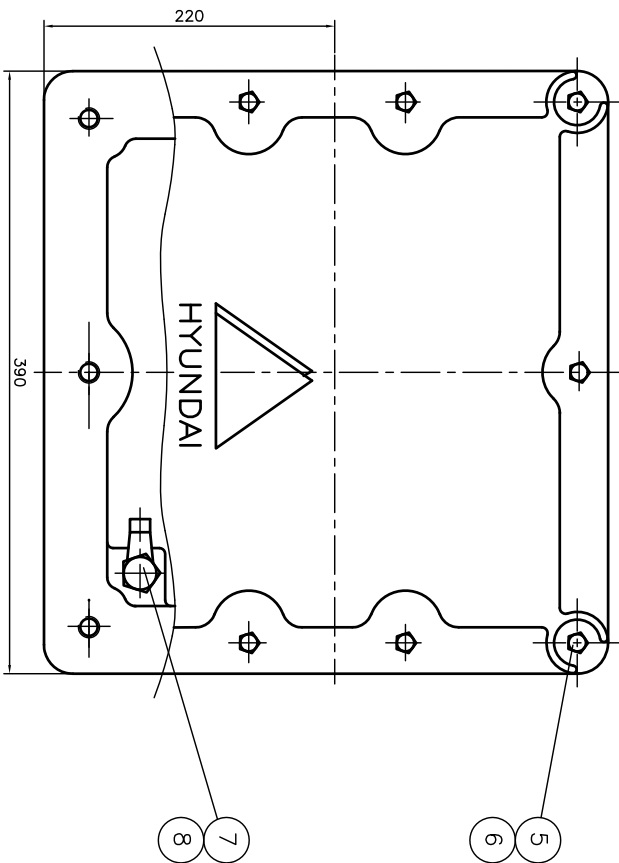
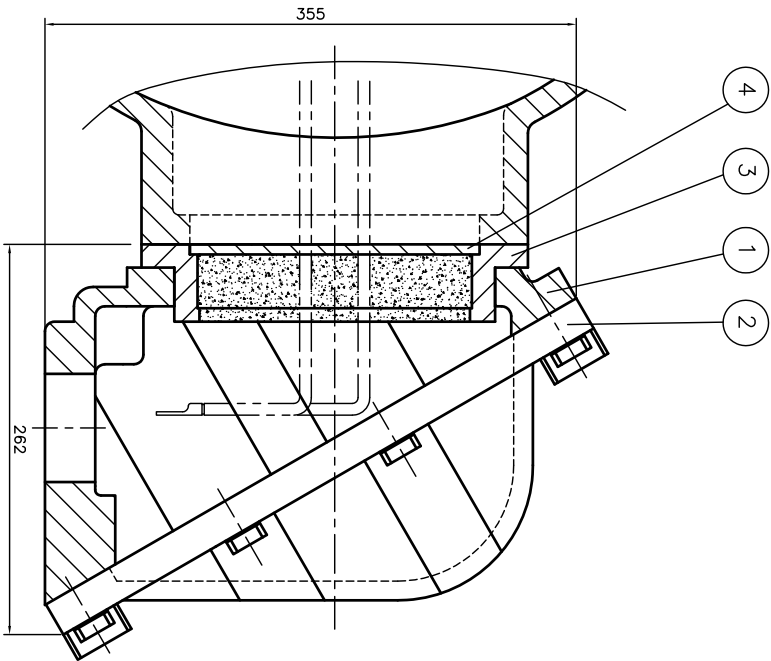
TEFC STANDARD

CAD PROJ \ FILE  
MMSTDMTR/GJ8XPP02

APPD BY	Y.S.KIM	UNIT	MM
CHKD BY		SCALE	1/15
CHKD BY		PROJEC'N	3rd Angle
DSND BY	LEE NOH DUK	DATE	2008.07.14

SUBJECT	KS Fr.280LL d2G4	
TITLE	<b>OUTLINE</b> THREE-PHASE INDUCTION MOTOR	

REF. NO	L3-SERIES	Sheet No. of
DWG NO	GJ8XPP02	Revision No. 0



QTY	DESCRIPTION	MATERIAL	DIMENSION	WEIGHT	PART NO.	REMARK	NO.
1	HEX. BOLT	BRONZE	M10				8
1	EARTH TERMINAL LUG	STD					7
10	SPRING WASHER	SUP-3					6
10	HEX. BOLT	S45C	M12				5
1	GUIDE PLATE	E.C.P					4
1	ADAPTER	FC25					3
1	TERMINAL BOX COVER	FC25					2
1	TERMINAL BOX BODY	FC25					1

APRD BY	UNIT	MM	SUBJECT	H/LAB FR-250,280 (2234)	SCALE	NONE	TITLE	TERMINAL BOX ASS'Y
CHKD BY	SCALE	NONE	PROJECN	3-24(3rd Angle)	DATE	98.10.30	REF. NO.	
DSND BY	KIM JONG SEON		DATE	98.10.30	DWG NO.	3M-036962	Sheet No.	
							of	
							Revision No.	

REV	DATE	CONTENTS	REQD BY	CHKD BY	APRD BY
1					
2					
3					
4					

