



# AC INDUCTION MOTOR DATA SHEET

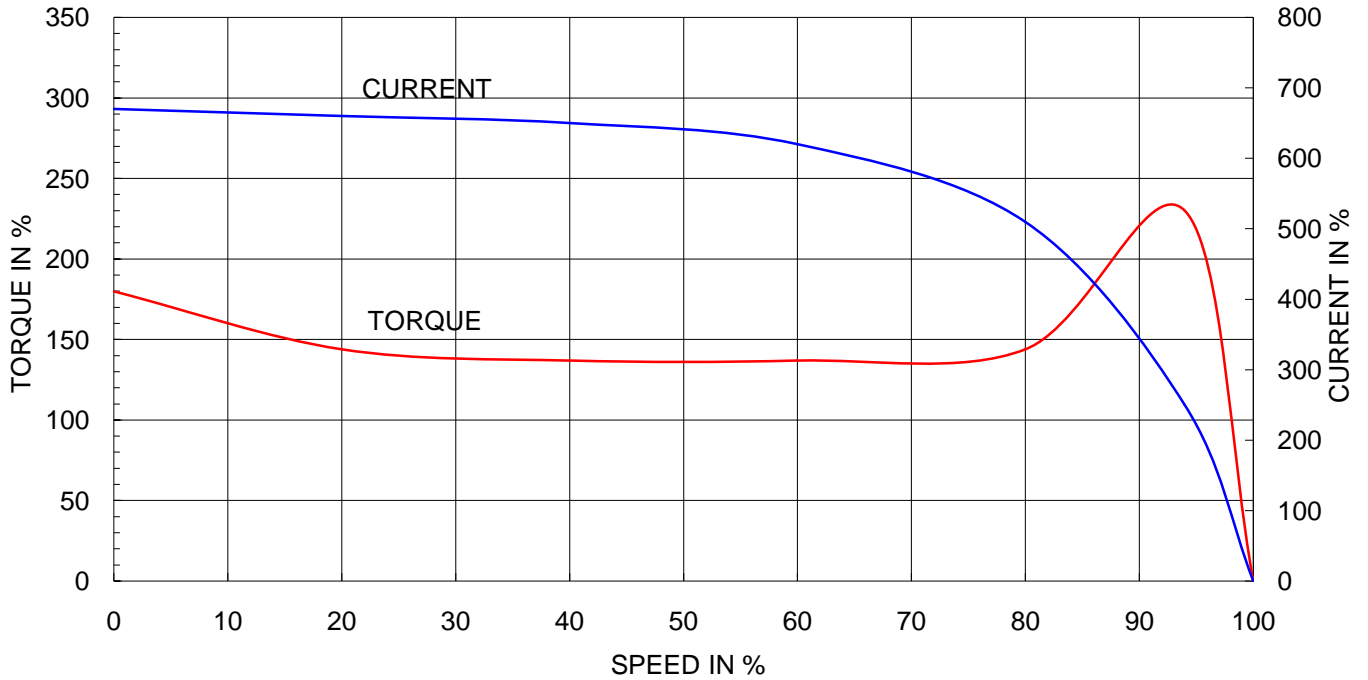
Model No.or RFQ No.		Item No.		Rev. No. [ 0 ]			
Project Name		Project No.		Quantity sets			
GENERAL SPECIFICATION			PERFORMANCE DATA				
Frame Size		280M		Rated Output 132 kW 175 HP			
Type		HS-132/4		Number of Poles 4			
Enclosure(Protection)		Explosion Proof ( IP55 )		Rotor Type Squirrel Cage			
Method of Cooling		IC411(FC)		Starting Method* <input checked="" type="checkbox"/> D.O.L <input type="checkbox"/> Y- Δ			
Rated Frequency		60 Hz		Rated Voltage 440 V 380 V 220 V			
Number of Phases		3		Current Full Load 207.2 A 239.9 A 414.4 A			
Insulation Class		<input checked="" type="checkbox"/> F <input type="checkbox"/> B <input type="checkbox"/> H		Locked-rotor** 670 % 670 % 670 %			
Temp. Rise at full load (by resistance method) at 1.0 S.F		80 deg. C		Efficiency			
Motor Location		<input type="checkbox"/> Indoor <input checked="" type="checkbox"/> Outdoor		50% Load 94.4 %			
Altitude		Less than 1000 meter		75% Load 95.0 %			
Relative Humidity		Less than 80 %		100% Load 95.0 %			
Ambient Temp.		40 deg. C (Max.)		Power Factor(p.u)			
Duty Type		Continuous ( S1 )		50% Load 0.848			
Service Factor		1.00		75% Load 0.878			
Mounting		<input type="checkbox"/> B3 <input type="checkbox"/> B5 <input checked="" type="checkbox"/> V1 <input type="checkbox"/> B3/B5		100% Load 0.880			
Bearing	Type	Anti-Friction		Speed at Full Load 1785 r.p.m			
	DE/N-DE	6318C3 / 6314C3		Torque			
Lubricant		Grease(Gadus S2 V 100 2)		Full Load 72.0 kg·m			
External Thrust		Not applicable		Locked-rotor** 180 %			
Coupling Method		<input checked="" type="checkbox"/> Direct <input type="checkbox"/> V-Belt		Breakdown** 230 %			
Shaft Extension		<input checked="" type="checkbox"/> Single <input type="checkbox"/> Double		Moment of Inertia (J)			
Terminal Box	Main	<input type="checkbox"/> Steel <input checked="" type="checkbox"/> Cast Iron		Load(Max.) 111.825 kg·m <sup>2</sup>			
	Aux.	<input type="checkbox"/> Yes <input checked="" type="checkbox"/> No		Motor 3.415 kg·m <sup>2</sup>			
Location		Refer to Outline Drawing		Sound Pressure Level (No-load & mean value at 1m from motor) 85 dB(A)			
Application				Vibration 2.2 mm/sec (r.m.s)			
Area classification		Hazardous		Permissible number of consecutive starts			
Type of Ex-Protection		Ex d II T4		Cold 3 times			
Applicable Standard		KS,IEC		Hot 2 times			
				Paint Munsell No. 4.0PB5.4/5.5(VL-451)			
ACCESSORIES			SUBMITTAL DRAWING				
			Outline Dimension Drawing \ Motor Weight(Approx.)				
			B3		kg		
			B5	0	0 kg		
			V1	GJ80PP02	1110 kg		
			B3/B5	0	0 kg		
Main T-Box Ass'y			3M-036962				
SPARE PARTS			REMARK				
			High Efficiency				
			Date	DSND	CHKD	CHKD	APPD
			2010-05-28	R.G. KIM	O.J. KIM	J.H. KIM	K.J. KANG

Note: Others not mentioned in this data sheet shall be in accordance with maker standard.  
 Above technical data are only design values and shall be guaranteed with tolerance of applicable standard.  
 Inspection and performance test shall be maker standard, if not mentioned.  
 \* In case of Inverter-Fed Motor, performance data is based on sine wave tests.  
 \*\* Data is based on when the motor is supplied at rated voltage & frequency, and the data is expressed as a percentage of full-load value.

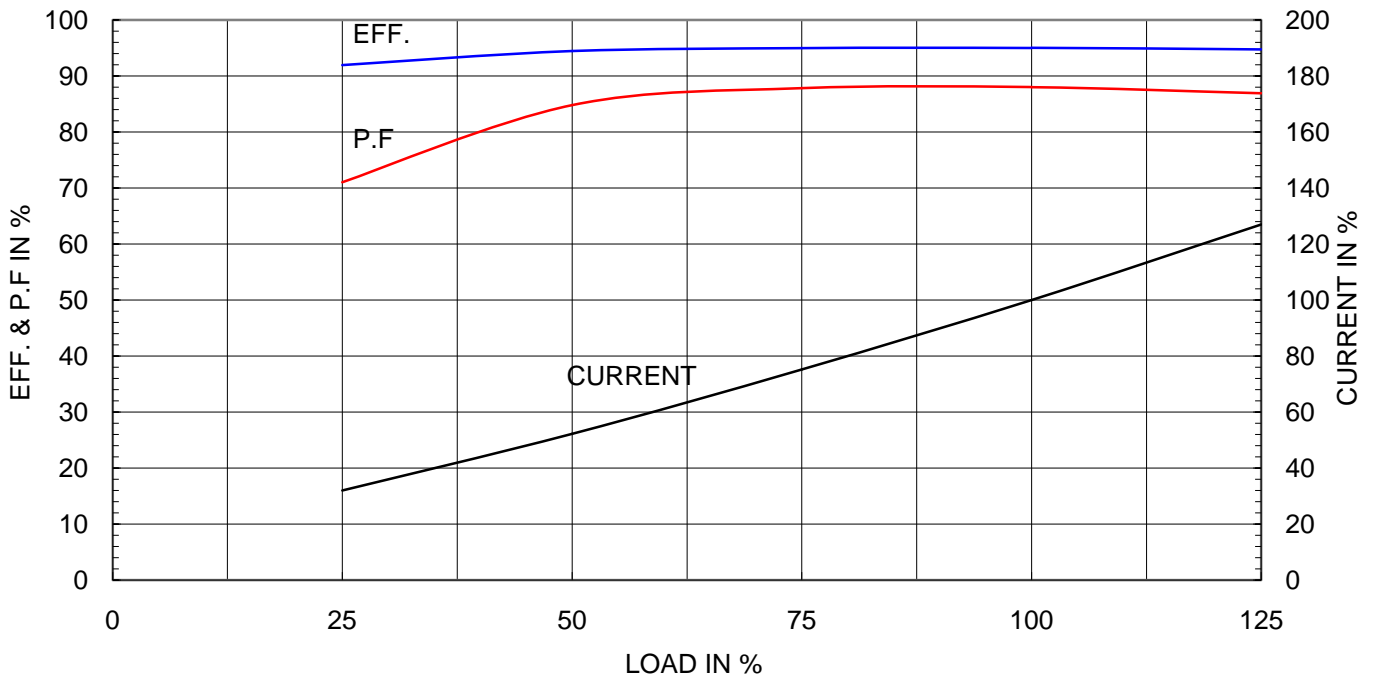
Type	: GHB280M
Full Load Torque	: 72.0 Kg.m
Motor moment of Inertia (J)	: 3.415 Kg.m <sup>2</sup>
Load moment of Inertia (J)	: 111.825 Kg.m <sup>2</sup>

132 kW	4 P	60 Hz	
Speed at Full Load :		1785 RPM	
Rated Voltage	440V	380V	220V
Full Load Current	207.2A	239.9A	414.4A

SPEED VS TORQUE & CURRENT CURVE



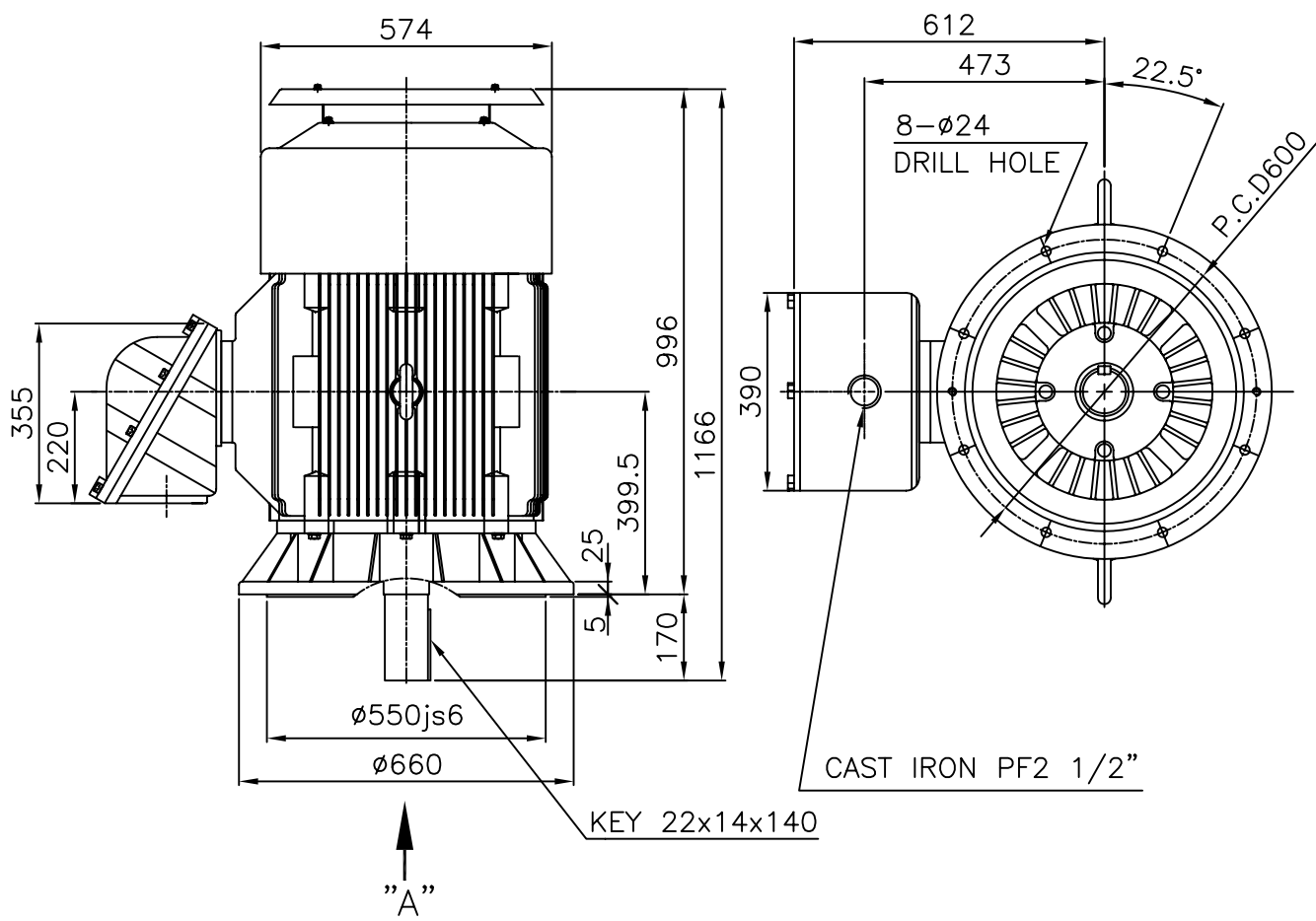
OUTPUT VS EFF., P.F & CURRENT CURVE



본 도면은 현대중공업(주) 재산이므로  
허가없이 복사할 수 없음 (취급유의)

THIS DRAWING IS PROPRIETARY TO HHI. NO PART OF THIS DRAWING  
MAYBE REPRODUCED WITHOUT THE PERMISSION OF HHI.

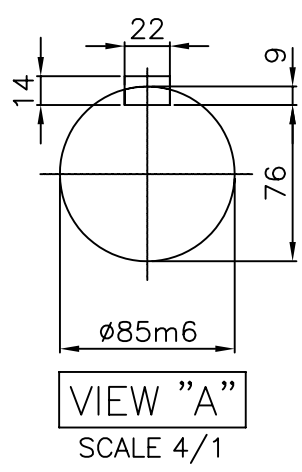
		<h1>TEFC</h1>		<b>TYPE</b>	GHB280M
<b>THREE PHASE INDUCTION MOTOR</b>					CAST IRON FRAME



**NOTE**

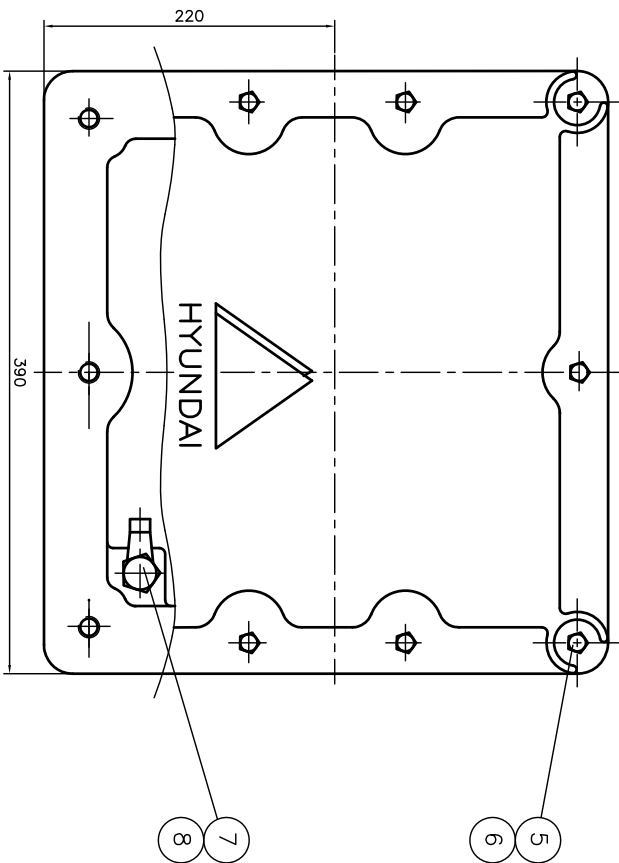
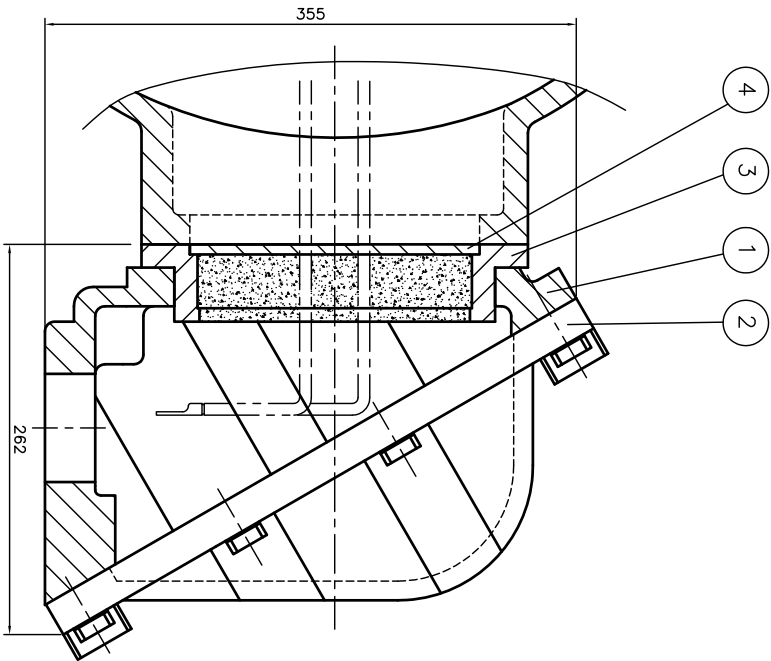
1.TOLERANCE :

RABBET DIAMETER	ø550 ±0.022
SHAFT DIAMETER	ø85 +0.035 / +0.013
KEYWAY WIDTH	22 -0.022 / -0.074
KEYWAY DEPTH	9 +0.2 / 0
KEY WIDTH	22 0 / -0.052
KEY HEIGHT	14 0 / -0.110



2.Ex d IIB T4 : (EXPLOSION CONSTRUCTION & IGNITION GROUP)

				<b>TEFC STANDARD</b>		
APPD BY	KIM Y.S	UNIT	mm	SUBJECT	KS Fr.280 d2G4	
CHKD BY		SCALE	1/15			CAD PROJ \ FILE MMSTDMTR/GJ80PP02
CHKD BY		PROJEC'N	3rd Angle	TITLE OUTLINE THREE-PHASE INDUCTION MOTOR		
DSND BY	NOH DUK LEE	DATE	2008.07.14			
				REF. NO	L3-SERIES	Sheet No. of
INDUSTRIAL & POWER SYSTEMS				DWG NO	GJ80PP02	Revision No. 0



QTY	DESCRIPTION	MATERIAL	DIMENSION	WEIGHT	PART NO.	REMARK	NO.
1	HEX. BOLT	BRONZE	M10				8
1	EARTH TERMINAL LUG	STD					7
10	SPRING WASHER	SUP-3					6
10	HEX. BOLT	S4SC	M12				5
1	GUIDE PLATE	E.G.P					4
1	ADAPTER	FC25					3
1	TERMINAL BOX COVER	FC25					2
1	TERMINAL BOX BODY	FC25					1

APRD BY	UNIT	MM	SUBJECT	H/LAB FR:250,280 (2234)	GO PROJ & FILE #
Q.P. CHK	SCALE	NONE	TITLE	TERMINAL BOX ASS'Y	F-300-4 \ 300007
CHGD BY	PROJECN	3.24(3rd Angle)			
DSND BY	KIM JONG SEON	DATE	98.10.30		

REV	DATE	CONTENTS	REQD BY	CHKD BY	APRD BY
1					
2					
3					
4					

**HYUNDAI**  
HEAVY INDUSTRIES CO., LTD.

REF. NO. 3M-036962  
DWG NO. 3M-036962  
Sheet No. of  
Revision No.