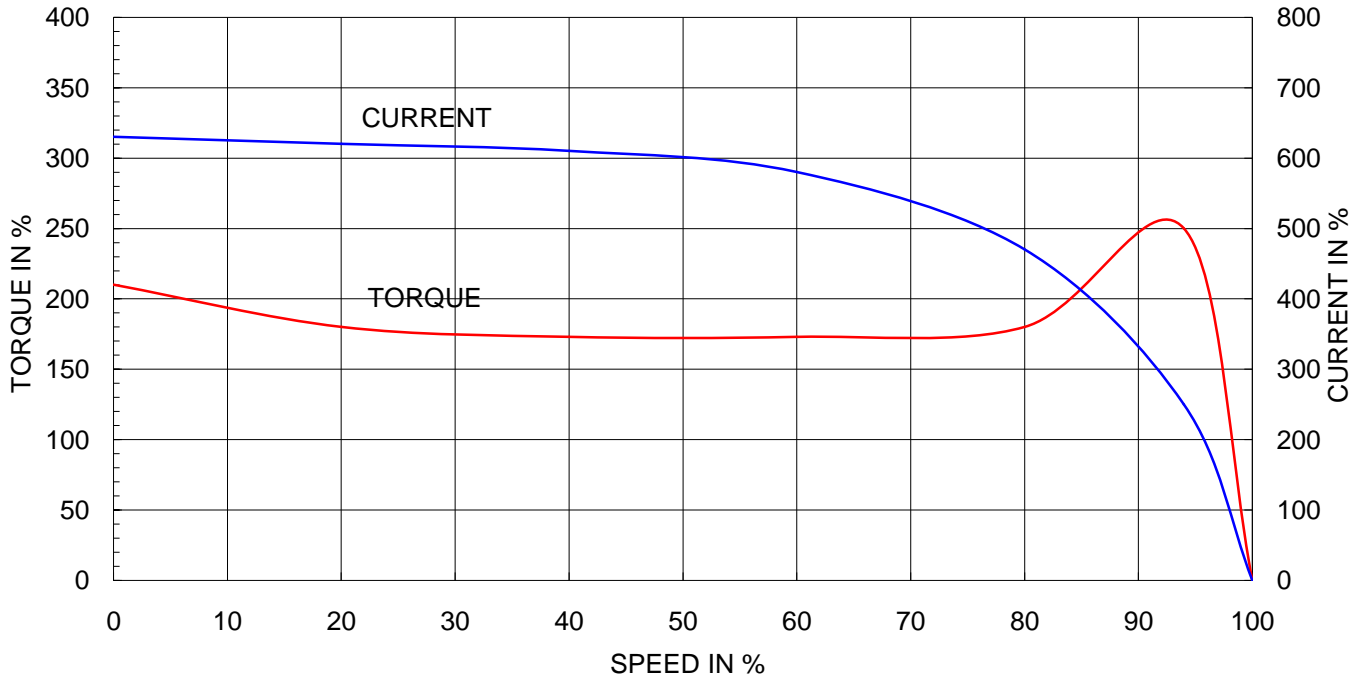


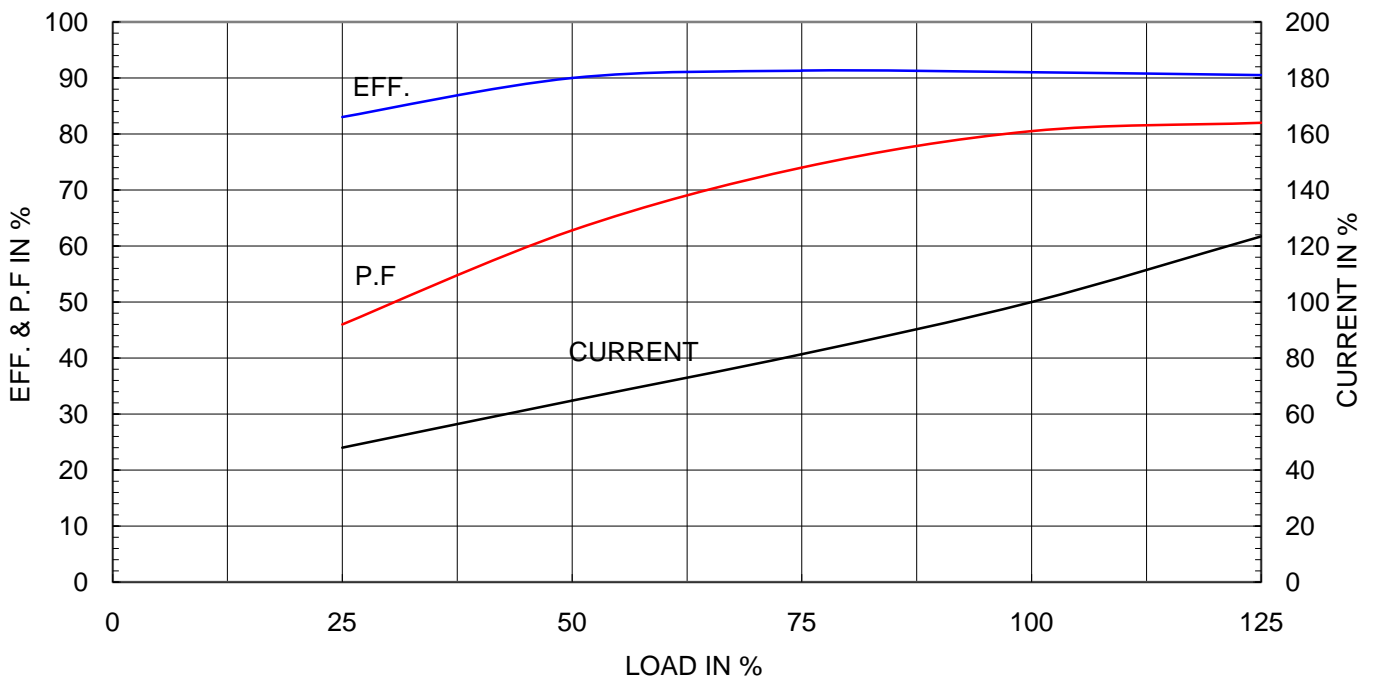
Type	:	HL-XP
Full Load Torque	:	6.1 Kg.m
Motor moment of Inertia (J)	:	0.060 Kg.m ²
Load moment of Inertia (J)	:	9.000 Kg.m ²

11 kW	4 P	60 Hz	
Speed at Full Load :		1770 RPM	
Rated Voltage	440V	380V	220V
Full Load Current	19.7A	22.8A	39.4A

SPEED VS TORQUE & CURRENT CURVE



OUTPUT VS EFF., P.F & CURRENT CURVE





TEFC

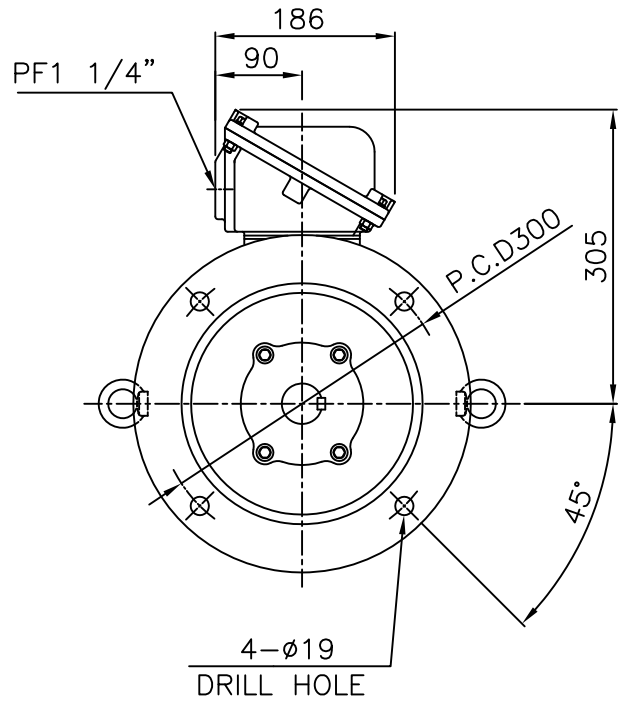
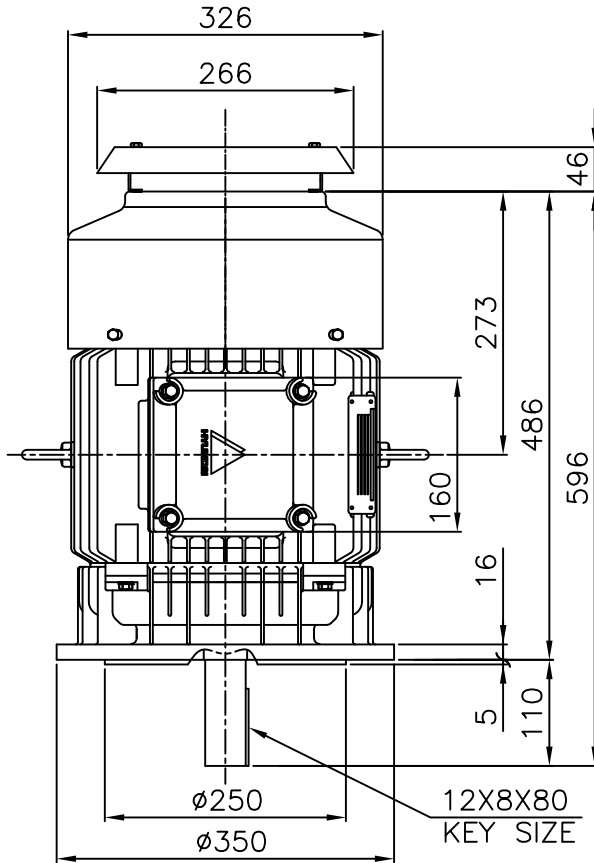
THREE PHASE INDUCTION MOTOR

TYPE

HL, HLS

CAST IRON FRAME

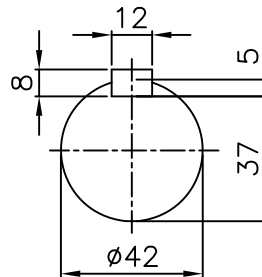
Exd II



NOTE

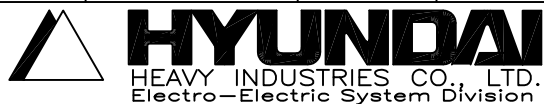
1.TOLERANCE :

FLANGE HOLES	Ø19	+0.43	0
RABBET DIAMETER	Ø250	+0.016	-0.013
SHAFT DIAMETER	Ø42	+0.018	+0.002
KEYWAY WIDTH	12	0	-0.043
KEYWAY DEPTH	5	+0.2	0

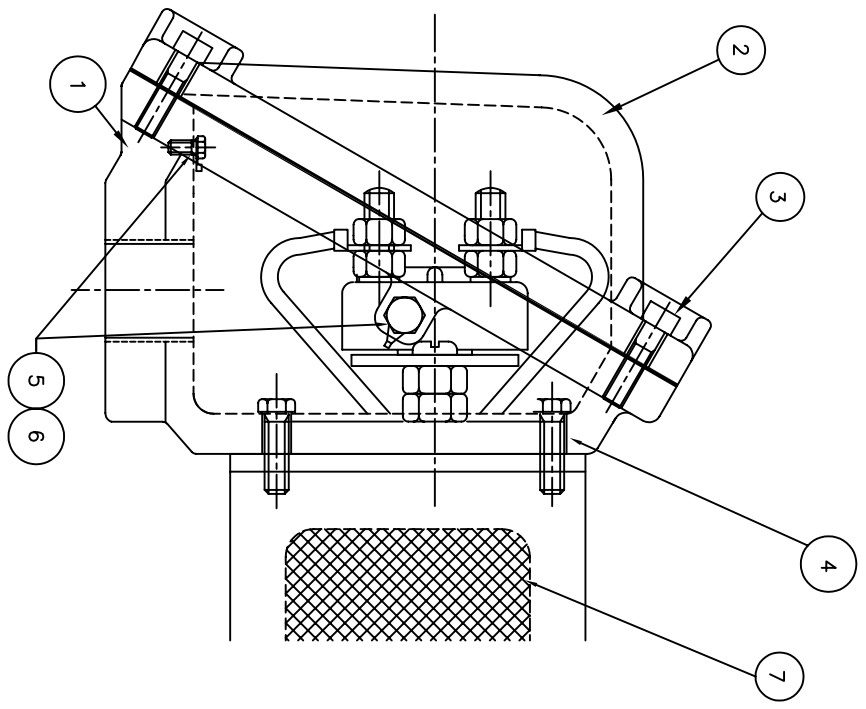
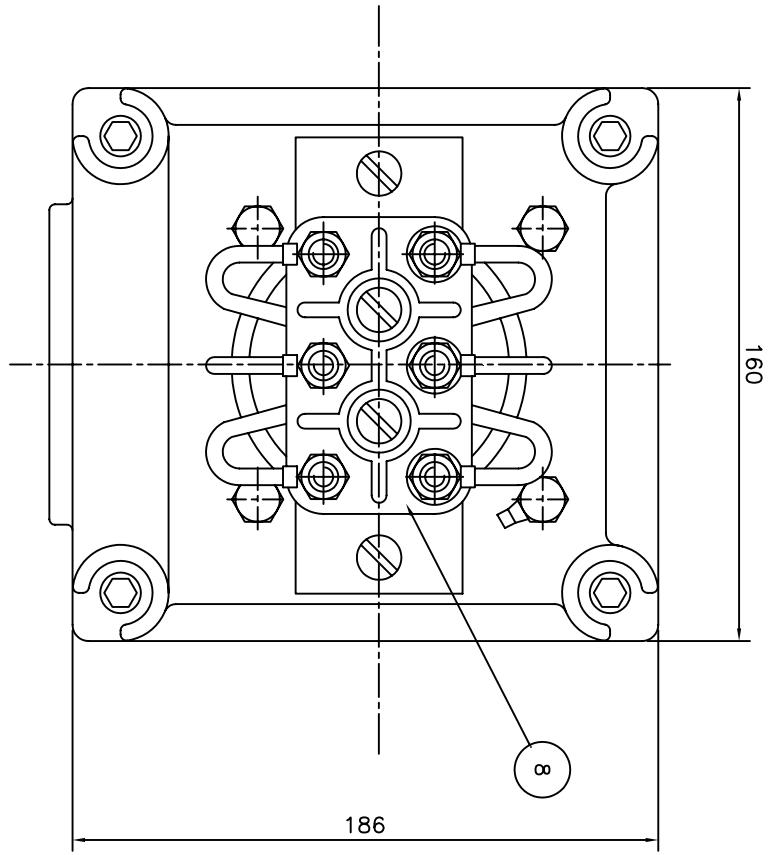


APPD BY	Y. S. KIM	UNIT	mm
CHKD BY	K. S. LEE	SCALE	1/8
CHKD BY	-----	PROJEC'N	3rd Angle
DSND BY	I. K. KIM	DATE	2008.10.22

SUBJECT	KS 160M	CAD PROJ \ FILE	XSDNKS\B2062AA05
TITLE	OUTLINE		



REF. NO	B2062AA05	Sheet No.	of
DWG NO	227B2062AA05	Revision No.	0



Q'TY	DESCRIPTION	MATERIAL	DIMENSION	WEIGHT	PART NO.	REMARK	NO.
1	TERMINAL BLOCK	D4C29C					8
1	SEALING COMPOUND	CU					7
2	GRD TERMINAL LUG	S45C					6
2	GRD. BOLT	S45C					5
4	T/B + FRAME BOLT	S45C					4
4	T/B + COVER BOLT	S45C					3
1	TERMINAL BOX COVER	FC15					2
1	TERMINAL BOX ASSEMBLY	FC15					1

APPD BY	UNIT	MATERIAL	DIMENSION	WEIGHT	PART NO.	REMARK	NO.
CHKD BY	SCALE	N/S					
CHKD BY	PROJEC'N	3*4# (3rd Angle)					
DSND BY	DATE	99.2.2					
DSND BY	LEE E.J.						

APPD BY	UNIT	MATERIAL	DIMENSION	WEIGHT	PART NO.	REMARK	NO.
CHKD BY	SCALE	N/S					
CHKD BY	PROJEC'N	3*4# (3rd Angle)					
DSND BY	DATE	99.2.2					
DSND BY	LEE E.J.						



APPD BY	UNIT	MATERIAL	DIMENSION	WEIGHT	PART NO.	REMARK	NO.
CHKD BY	SCALE	N/S					
CHKD BY	PROJEC'N	3*4# (3rd Angle)					
DSND BY	DATE	99.2.2					
DSND BY	LEE E.J.						

REV	DATE	CONTENTS	REV'D BY	CHK'D BY	CHK'D BY	APP'D BY
1						
2						
3						
4						

REF. NO	DWG NO	SHEET NO.	TOTAL SHEETS
7B1470LB	227B1470LB	0	0

TITLE	CAD PROJ. FILE
MAIN TERMINAL BOX	XSMOUT\7B1468LB