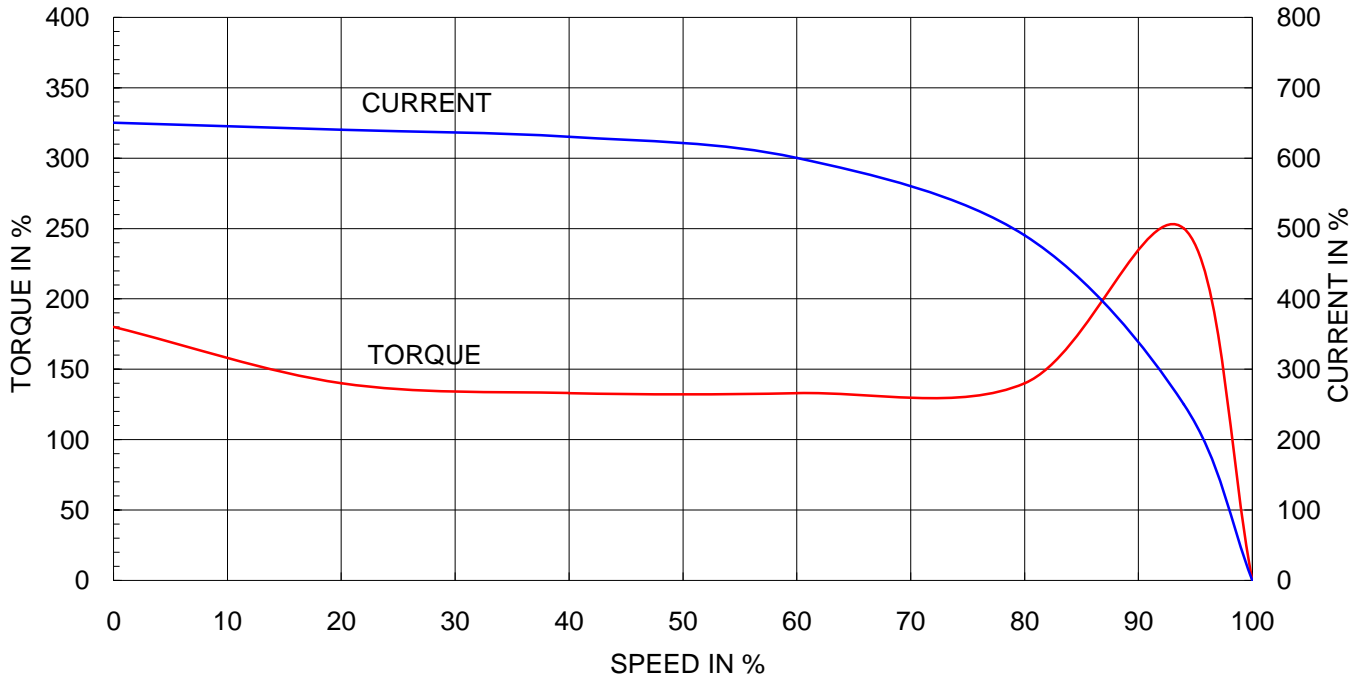


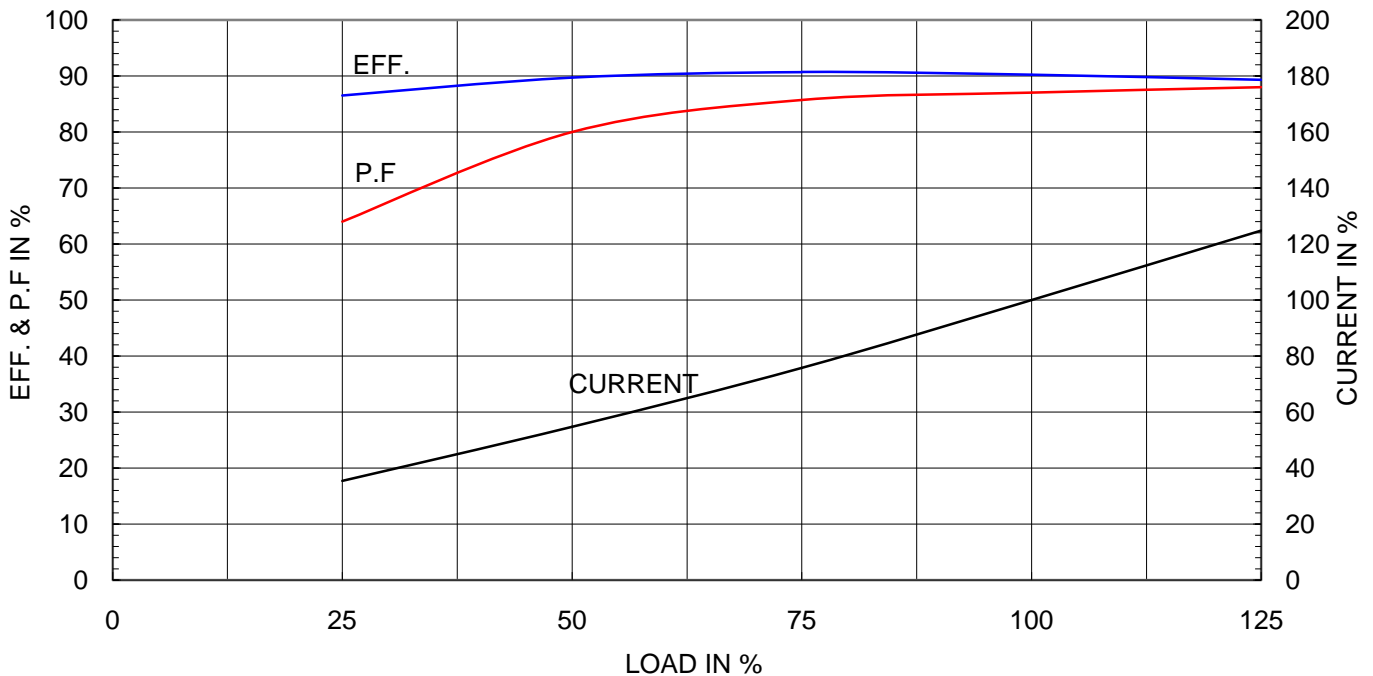
Type	:	HL-XP
Full Load Torque	:	3.0 Kg.m
Motor moment of Inertia (J)	:	0.039 Kg.m ²
Load moment of Inertia (J)	:	2.000 Kg.m ²

11 kW	2 P	60 Hz	
Speed at Full Load :		3535 RPM	
Rated Voltage	440V	380V	220V
Full Load Current	18.4A	21.3A	36.8A

SPEED VS TORQUE & CURRENT CURVE



OUTPUT VS EFF., P.F & CURRENT CURVE





TEFC

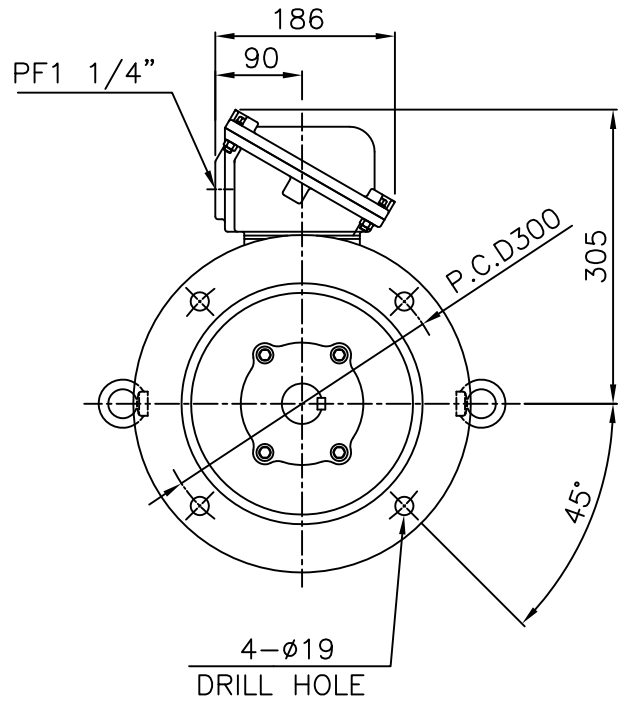
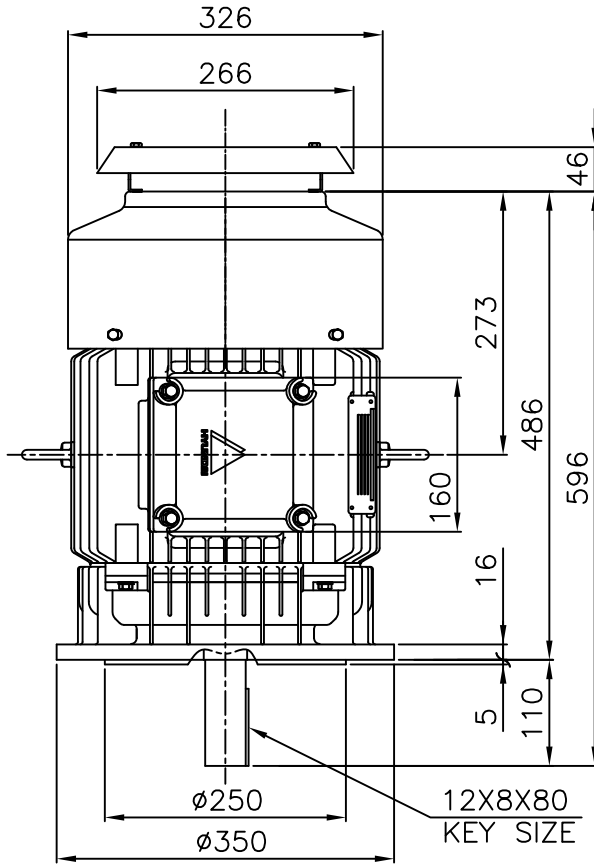
THREE PHASE INDUCTION MOTOR

TYPE

HL, HLS

CAST IRON FRAME

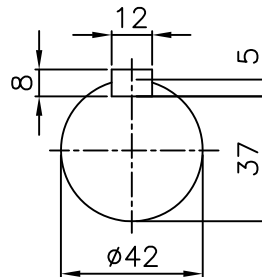
Exd II



NOTE

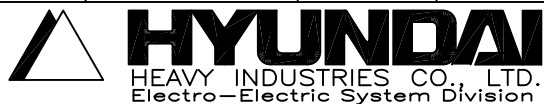
1.TOLERANCE :

FLANGE HOLES	Ø19	+0.43	0
RABBET DIAMETER	Ø250	+0.016	-0.013
SHAFT DIAMETER	Ø42	+0.018	+0.002
KEYWAY WIDTH	12	0	-0.043
KEYWAY DEPTH	5	+0.2	0

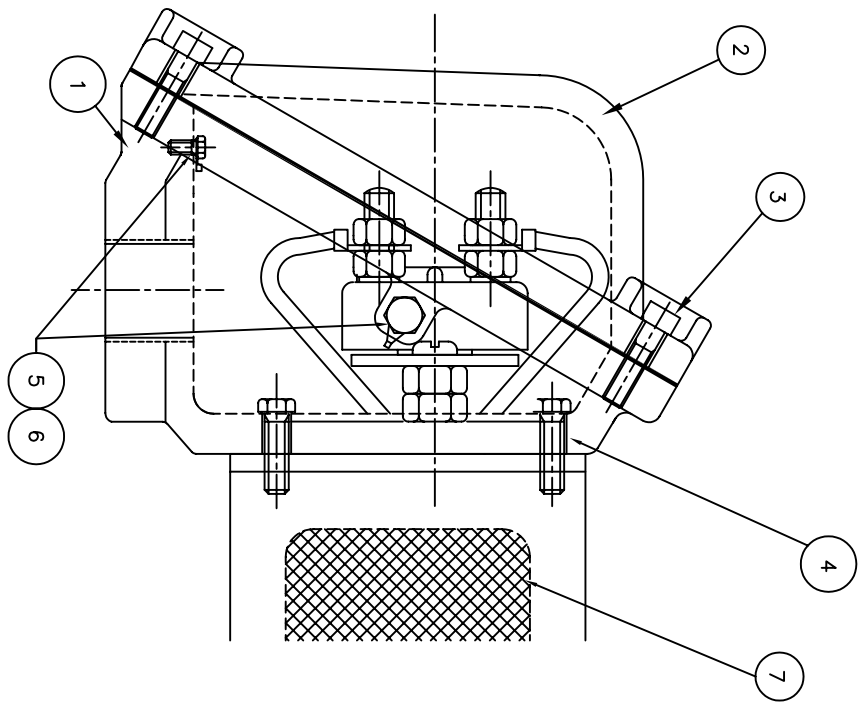
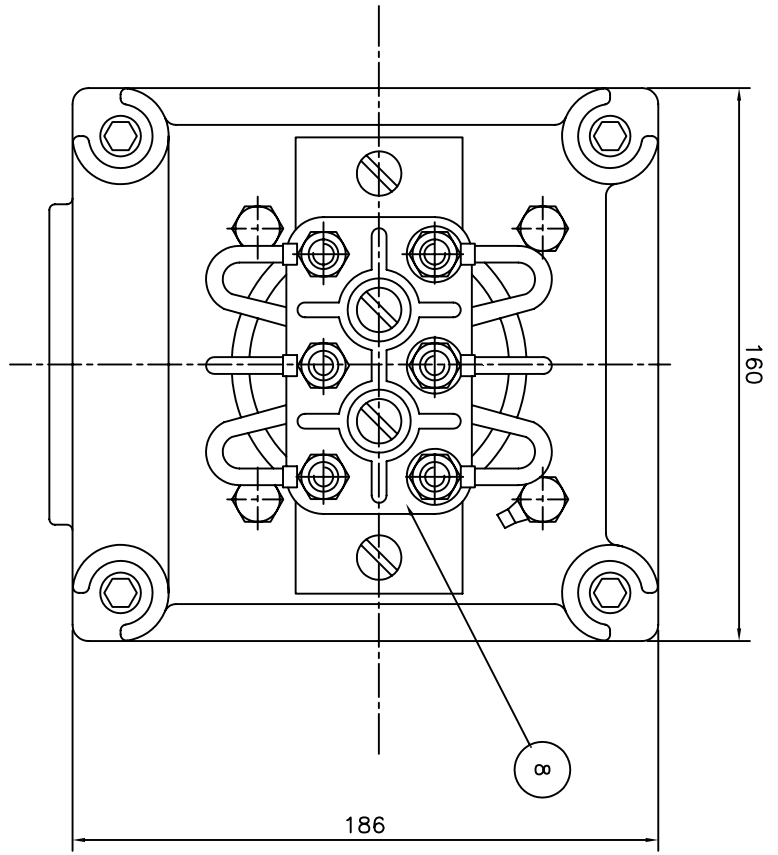


APPD BY	Y. S. KIM	UNIT	mm
CHKD BY	K. S. LEE	SCALE	1/8
CHKD BY	-----	PROJEC'N	3rd Angle
DSND BY	I. K. KIM	DATE	2008.10.22

SUBJECT	KS 160M	CAD PROJ \ FILE	XSDNKS\B2062AA05
TITLE	OUTLINE		



REF. NO	B2062AA05	Sheet No.	of
DWG NO	227B2062AA05	Revision No.	0



Q'TY	DESCRIPTION	MATERIAL	DIMENSION	WEIGHT	PART NO.	REMARK	NO.
1	TERMINAL BLOCK	D4C29C					8
1	SEALING COMPOUND	CU					7
2	GRD. TERMINAL LUG	S45C					6
2	GRD. BOLT	S45C					5
4	T/B + FRAME BOLT	S45C					4
4	T/B + COVER BOLT	S45C					3
1	TERMINAL BOX COVER	FC15					2
1	TERMINAL BOX ASSEMBLY	FC15					1

APPD BY	UNIT	MATERIAL	DIMENSION	WEIGHT	PART NO.	REMARK	NO.
CHKD BY	SCALE	N/S					
CHKD BY	PROJEC'N	3*4 (3rd Angle)					
DSND BY	DATE	99.2.2					
DSND BY	LEE E.J.						

TITLE	SUBJECT	IEC 160/180FR d2G4	CAD PROJ. FILE
MAIN TERMINAL BOX			XSMOUT\7B1468LB

REF. NO	DWG NO	227B1470LB	Sheet No. of

REV	DATE	CONTENTS	REVD BY	CHKD BY	CHKD BY	APPD BY
1						
2						
3						
4						

HYUNDAI HEAVY INDUSTRIES CO. LTD.
ELECTRICAL ENGINEERING DIVISION