

Model No.or RFQ No.		Item No.		Rev. No. [ 0 ]				
Project Name		Project No.		Quantity sets				
GENERAL SPECIFICATION			PERFORMANCE DATA					
Frame Size		280M		Rated Output 110 kW 150 HP				
Type		HS-110/6		Number of Poles 6				
Enclosure(Protection)		Explosion Proof ( IP55 )		Rotor Type Squirrel Cage				
Method of Cooling		IC411(FC)		Starting Method* <input checked="" type="checkbox"/> D.O.L <input type="checkbox"/> Y- Δ				
Rated Frequency		60 Hz		Rated Voltage 440 V 380 V 220 V				
Number of Phases		3		Current Full Load 176.7 A 204.6 A 353.3 A				
Insulation Class		<input checked="" type="checkbox"/> F <input type="checkbox"/> B <input type="checkbox"/> H		Locked-rotor** 700 % 700 % 700 %				
Temp. Rise at full load (by resistance method)		at 1.0 S.F 80 deg. C		Efficiency				
Motor Location				<input checked="" type="checkbox"/> Indoor <input type="checkbox"/> Outdoor		50% Load 94.7 %		
Altitude		Less than 1000 meter		75% Load 95.1 %				
Relative Humidity		Less than 80 %		100% Load 95.0 %				
Ambient Temp.		40 deg. C (Max.)		Power Factor(p.u)				
Duty Type		Continuous ( S1 )		50% Load 0.797				
Service Factor		1.00		75% Load 0.849				
Mounting		<input checked="" type="checkbox"/> B3 <input type="checkbox"/> B5 <input type="checkbox"/> V1 <input type="checkbox"/> B3/B5		100% Load 0.860				
Bearing		Type Anti-Friction		Speed at Full Load 1185 r.p.m				
		DE/N-DE 6318C3 / 6314C3		Torque				
		Lubricant Grease(Gadus S2 V 100 2)		Full Load 90.4 kg·m				
External Thrust		Not applicable		Locked-rotor** 170 %				
Coupling Method		<input checked="" type="checkbox"/> Direct <input type="checkbox"/> V-Belt		Breakdown** 250 %				
Shaft Extension		<input checked="" type="checkbox"/> Single <input type="checkbox"/> Double		Moment of Inertia (J)				
Terminal Box		Main <input type="checkbox"/> Steel <input checked="" type="checkbox"/> Cast Iron		Load(Max.) 204.975 kg·m <sup>2</sup>				
		Aux. <input type="checkbox"/> Yes <input checked="" type="checkbox"/> No		Motor 4.943 kg·m <sup>2</sup>				
		Location Refer to Outline Drawing		Sound Pressure Level (No-load & mean value at 1m from motor)				
Application				80 dB(A)				
Area classification		Hazardous		Vibration 2.2 mm/sec (r.m.s)				
Type of Ex-Protection		Ex d II T4		Permissible number of consecutive starts				
Applicable Standard		KS,IEC		Cold 3 times				
				Hot 2 times				
				Paint Munsell No. 4.OPB5.4/5.5(VL-451)				
ACCESSORIES			SUBMITTAL DRAWING					
			Outline Dimension Drawing \ Motor Weight(Approx.)					
			B3		GJ8MAP02	1040 kg		
			B5		0	0 kg		
			V1			kg		
			B3/B5		0	0 kg		
			Main T-Box Ass'y			3M-036962		
SPARE PARTS			REMARK					
			High Efficiency					
			Date		DSND	CHKD	CHKD	APPD
			2010-05-28		R.G. KIM	O.J. KIM	J.H. KIM	K.J. KANG

Note: Others not mentioned in this data sheet shall be in accordance with maker standard.

Above technical data are only design values and shall be guaranteed with tolerance of applicable standard.

Inspection and performance test shall be maker standard, if not mentioned.

\* In case of Inverter-Fed Motor, performance data is based on sine wave tests.

\*\* Data is based on when the motor is supplied at rated voltage & frequency, and the data is expressed as a percentage of full-load value.



# PERFORMANCE CURVE

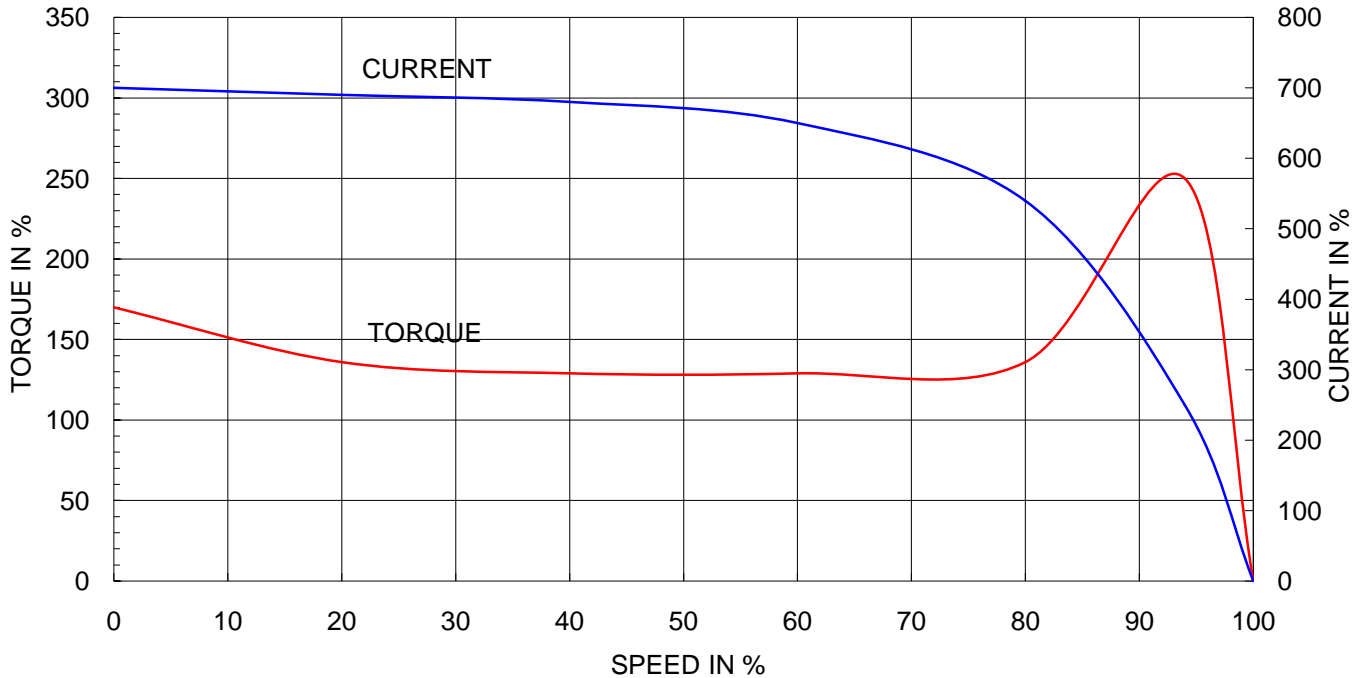
CURVE NO.

P-HS-110/6

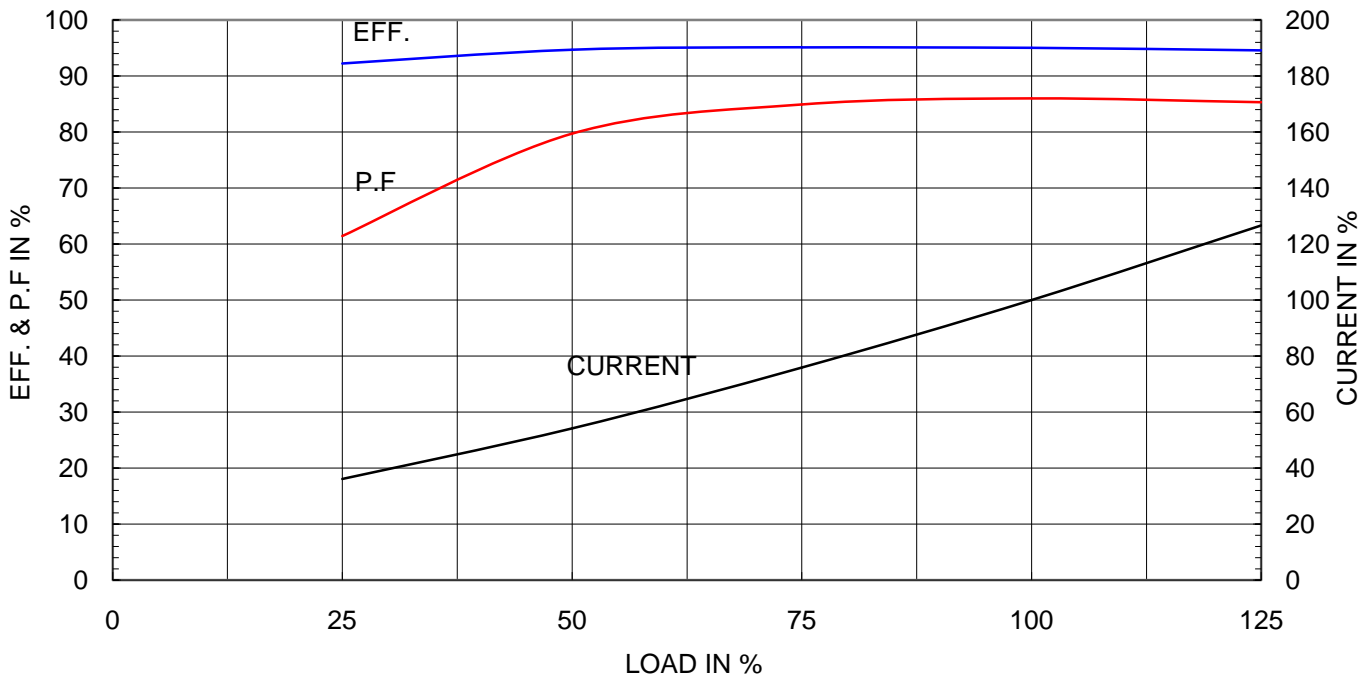
Type	: GHB280M
Full Load Torque	: 90.4 Kg.m
Motor moment of Inertia (J)	: 4.943 Kg.m <sup>2</sup>
Load moment of Inertia (J)	: 204.975 Kg.m <sup>2</sup>

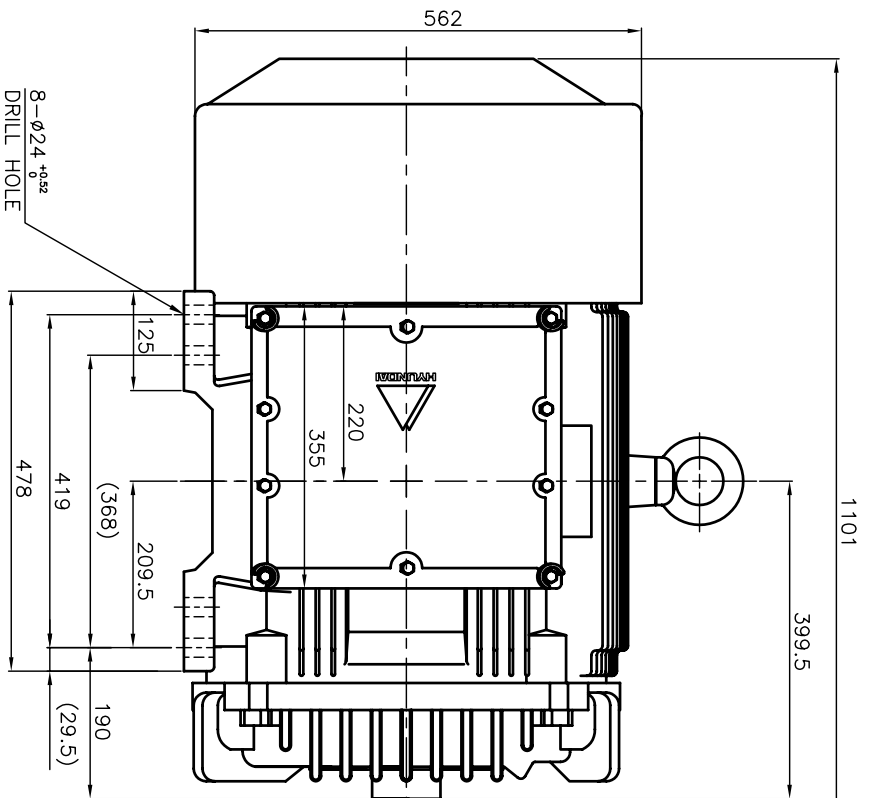
110 kW	6 P	60 Hz	
Speed at Full Load : 1185 RPM			
Rated Voltage	440V	380V	220V
Full Load Current	176.7A	204.6A	353.3A

SPEED VS TORQUE & CURRENT CURVE



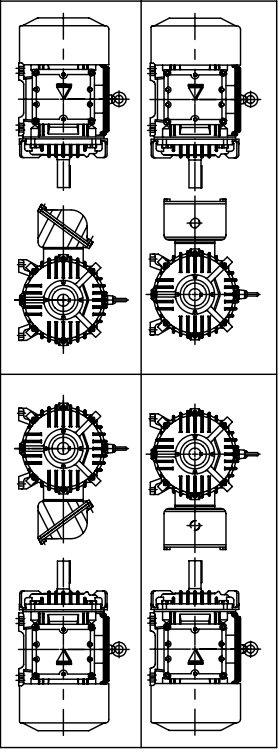
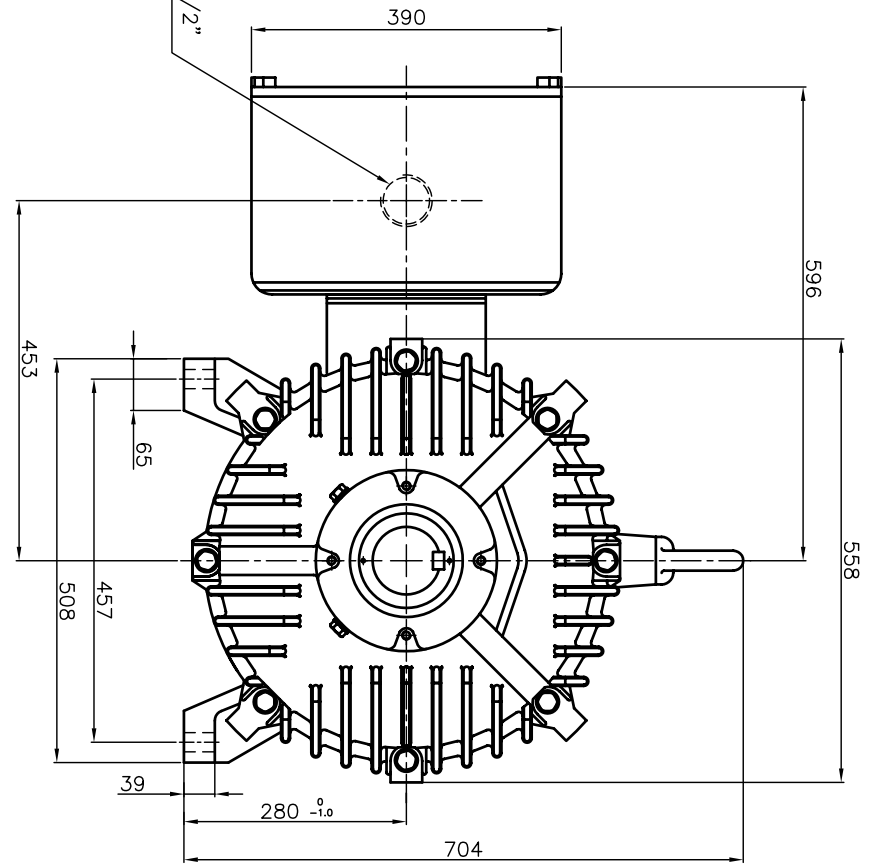
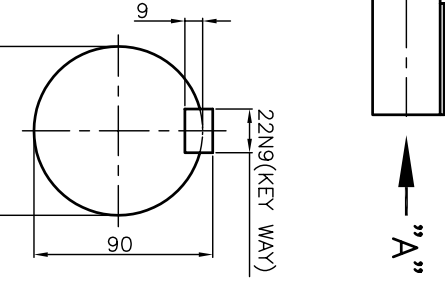
OUTPUT VS EFF., P.F & CURRENT CURVE





\* TERMINAL BOX LOCATION

VIEW "A"  
SCALE 2.5/1



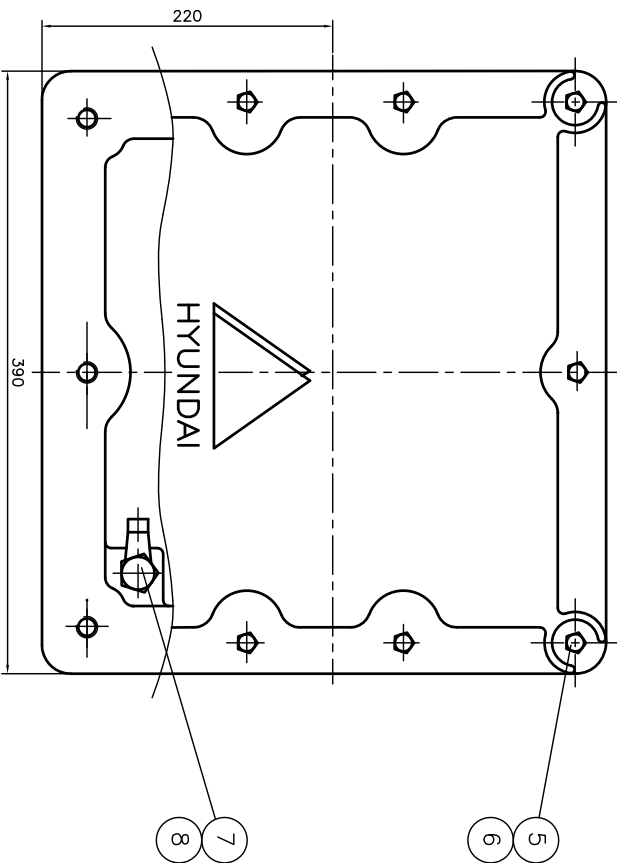
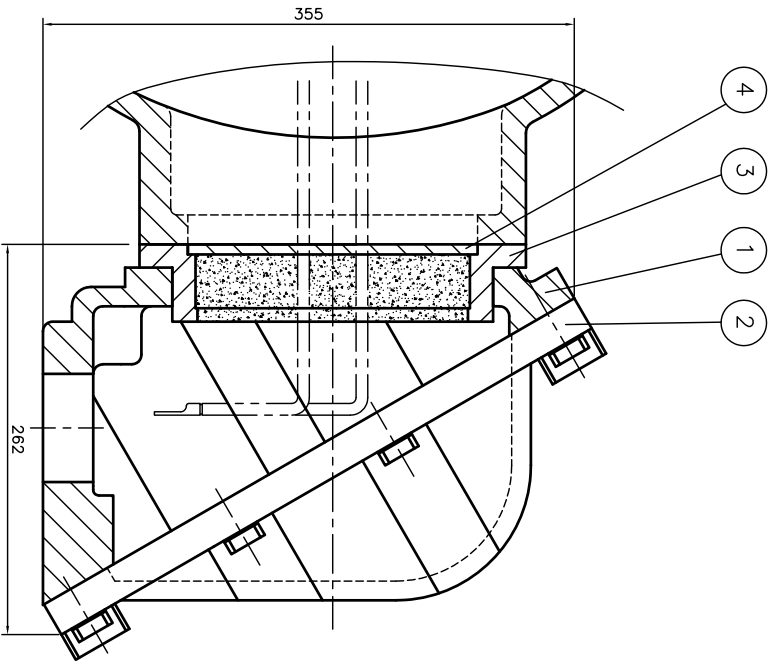
▽	50S
▽▽	12.5S
▽▽▽	3.2S
▽▽▽▽	0.4S

일반 가공 공차	일반 재료 공차
1-4 ±0.1	6-30 ±0.5
4-18 ±0.2	30-120 ±0.8
18-63 ±0.3	120-315 ±1.2
63-250 ±0.5	315-1000 ±2.0
250-1000 ±0.8	1000- ±3.0

**EX d II B T4**  
(EXPLOSION CONSTRUCTION & IGNITION GROU)

REV	DATE	CONTENTS	REVD BY	CHKD BY	CHKD BY	APPD BY
1						
2						
3						
4						
5						

QTY	DESCRIPTION	MATERIAL	DIMENSION	WEIGHT	PART NO.	REMARK	NO.
APPD BY	강경중		UNIT			SUBJECT	CAD PRU
CHKD BY	김옥진		SCALE			KS FR.280M, PTYPE, EP	FILE
CHKD BY	김종신		PROJEC'N			3rd Angle	MMSTD\MTR\GJ8MAP02
DSND BY	김형규		DATE			2005.06.07	
TITLE							
OUTLINE DIMENSION							
THREE-PHASE INDUCTION MOTOR							
REF. NO.							Sheet No. of
DWG NO	GJ8MAP-02						Revision No.



QTY	DESCRIPTION	MATERIAL	DIMENSION	WEIGHT	PART NO.	REMARK NO.
1	HEX BOLT	BRONZE	M10			
1	EARTH TERMINAL LUG	STD				
10	SPRING WASHER	SUP-3				
10	HEX BOLT	S45C	M12			
1	GUIDE PLATE	E.G.P				
1	ADAPTER	FC25				
1	TERMINAL BOX COVER	FC25				
1	TERMINAL BOX BODY	FC25				
APPD BY	UNIT	MM	SUBJECT   HLAB FR 230,280 (2234)			
QIP CHK	SCALE	NONE	DRAWING FILE #   T-300-4 \ 300007			
CHGD BY	PROJEC N	3 2nd(3rd Angle)	TITLE   TERMINAL BOX ASS'Y			
DSND BY	DATE	98.10.30	REF. NO			
			DWG NO   3M-036962			
			Sheet No. of			
			Revision No.			

REV	DATE	CONTENTS	REQD BY	CHKD BY	APPD BY
1					
2					
3					
4					