



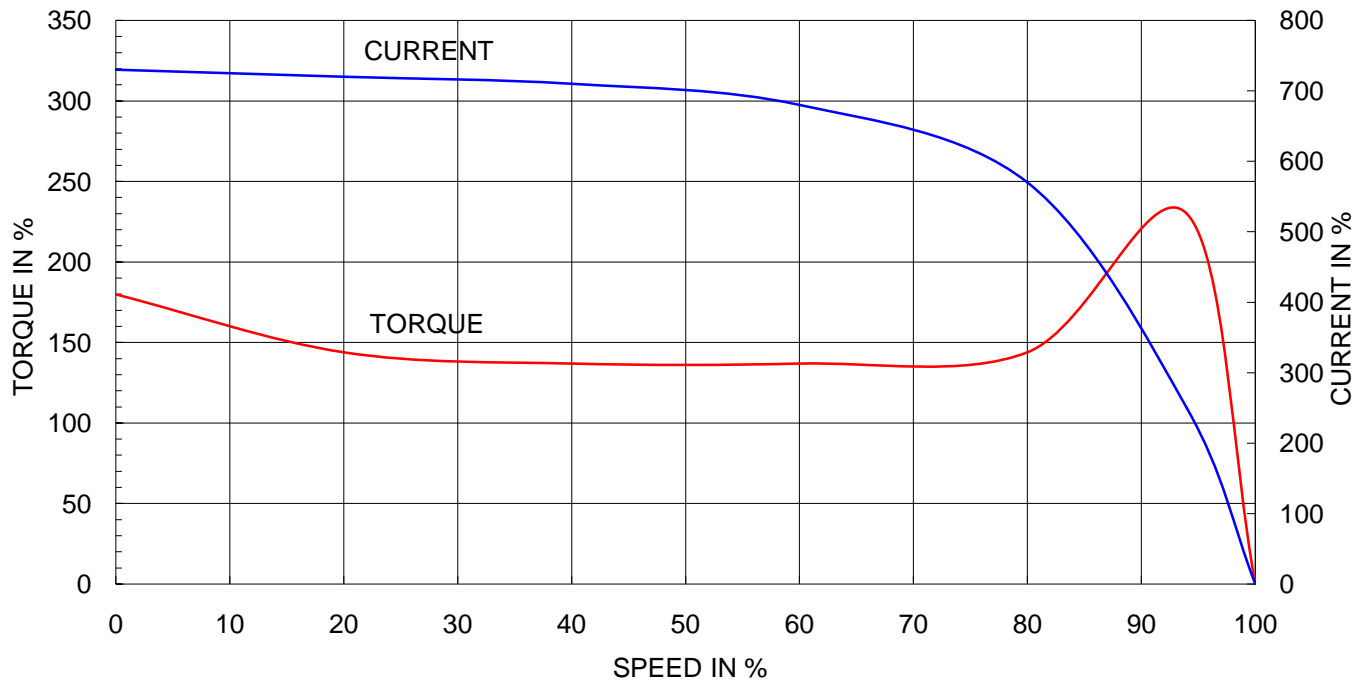
Note: Others not mentioned in this data sheet shall be in accordance with maker standard.
 Above technical data are only design values and shall be guaranteed with tolerance of applicable standard.
 Inspection and performance test shall be maker standard, if not mentioned.
 * In case of Inverter-Fed Motor, performance data is based on sine wave tests.
 ** Data is based on when the motor is supplied at rated voltage & frequency, and the data is expressed as a percentage of full-load value.

HHI W230-131-1 * In case of Inverter or V.V.V.F Motor: Performance data is based on sine wave tests. A4(210mm X 297mm)

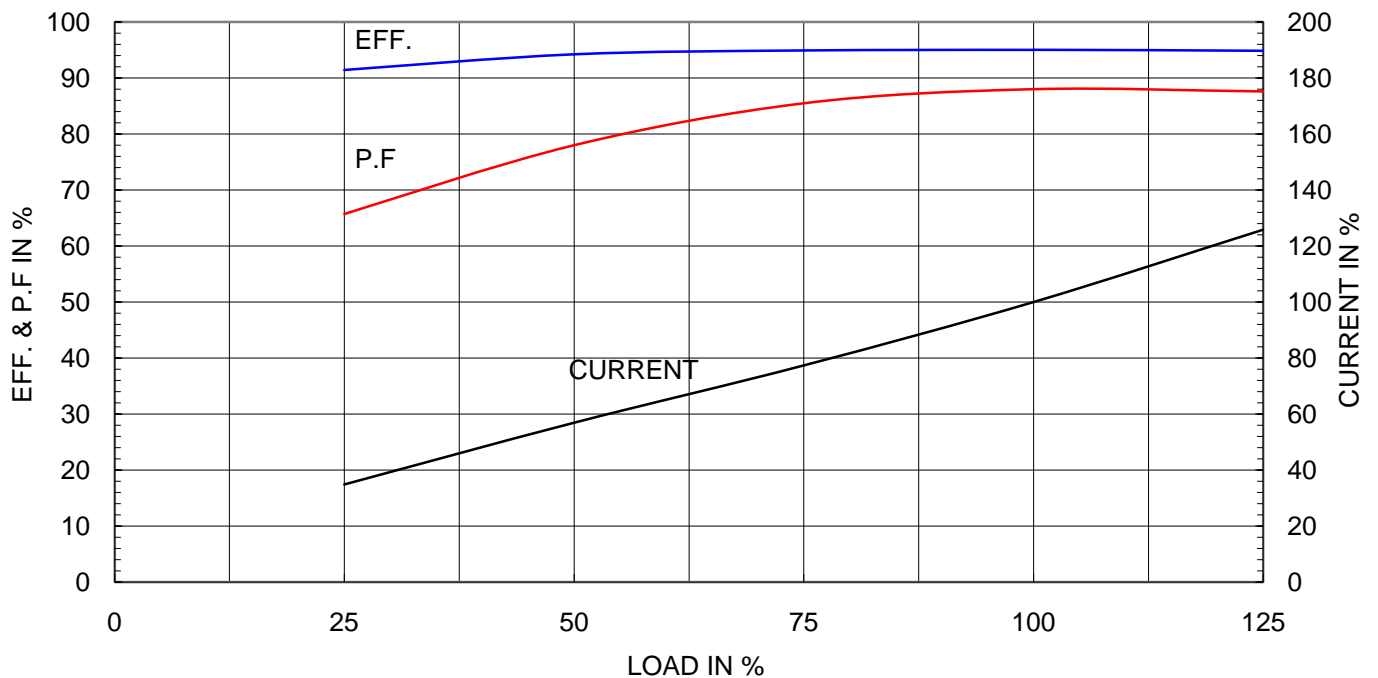
Type	:	GHB280M
Full Load Torque	:	60.0 Kg.m
Motor moment of Inertia (J)	:	3.023 Kg.m ²
Load moment of Inertia (J)	:	78.200 Kg.m ²


110 kW		4 P		60 Hz	
Speed at Full Load :				1785 RPM	
Rated Voltage	440V	380V	220V		
Full Load Current	172.7A	199.9A	345.3A		

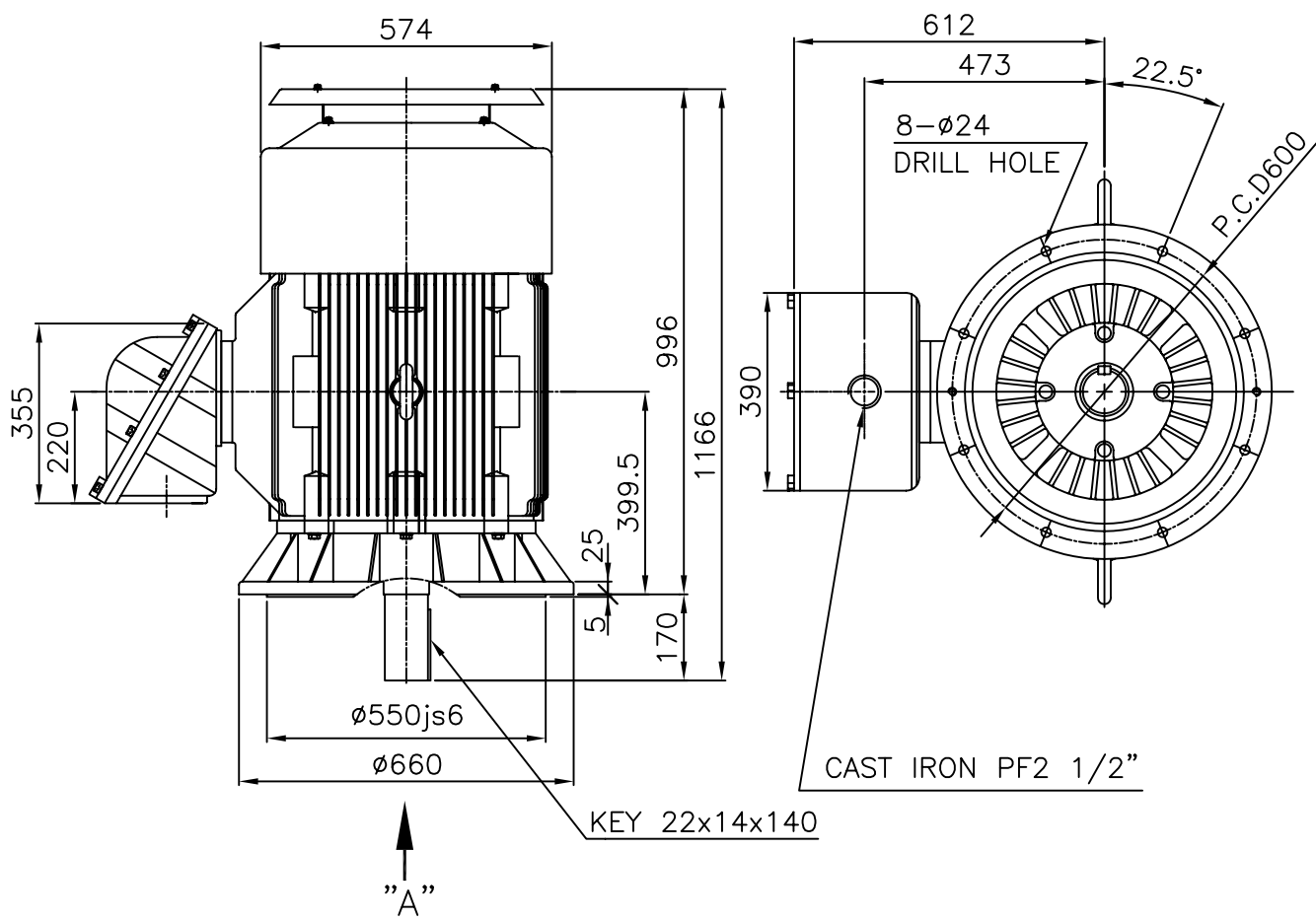
SPEED VS TORQUE & CURRENT CURVE



OUTPUT VS EFF., P.F & CURRENT CURVE



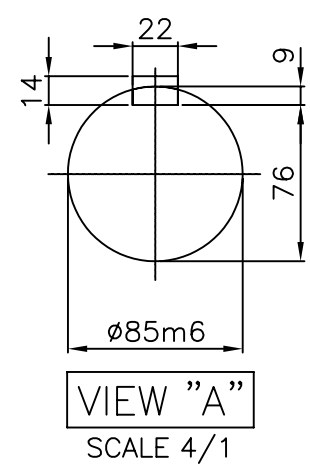
	<p align="center">TEFC</p> <p align="center">THREE PHASE INDUCTION MOTOR</p>	<p>TYPE</p>	<p align="center">GHB280M</p> <hr/> <p align="center">CAST IRON FRAME</p>
---	--	--------------------	---



NOTE

1.TOLERANCE :

RABBET DIAMETER	$\phi 550 \pm 0.022$
SHAFT DIAMETER	$\phi 85 \begin{smallmatrix} +0.035 \\ +0.013 \end{smallmatrix}$
KEYWAY WIDTH	$22 \begin{smallmatrix} -0.022 \\ -0.074 \end{smallmatrix}$
KEYWAY DEPTH	$9 \begin{smallmatrix} +0.2 \\ 0 \end{smallmatrix}$
KEY WIDTH	$22 \begin{smallmatrix} 0 \\ -0.052 \end{smallmatrix}$
KEY HEIGHT	$14 \begin{smallmatrix} 0 \\ -0.110 \end{smallmatrix}$




2.Ex d IIB T4 : (EXPLOSION CONSTRUCTION & IGNITION GROUP)

TEFC STANDARD	
CAD PROJ	FILE
MMSTDMTR/GJ80PP02	

APPD BY	KIM Y.S	UNIT	mm
CHKD BY		SCALE	1/15
CHKD BY		PROJEC'N	3rd Angle
DSND BY	NOH DUK LEE	DATE	2008.07.14

SUBJECT	KS Fr.280 d2G4	
TITLE	OUTLINE THREE-PHASE INDUCTION MOTOR	
REF. NO	L3-SERIES	Sheet No. of
DWG NO	GJ80PP02	Revision No. 0

1	HEX. BOLT		BRONZE	M10								8
1	EARTH TERMINAL LUG		STD									7
10	SPRING WASHER		SUP3									6
10	HEX. BOLT		S46G	M12								5
1	GUIDE PLATE		E.G.P									4
1	ADAPTER		FC25									3
1	TERMINAL BOX COVER		FC25									2
1	TERMINAL BOX BODY		FC25									1
QTY	DESCRIPTION		MATERIAL	DIMENSION	WEIGHT	PART NO.	REMARK	NO.				
APPRO BY		UNIT	MM	SUBJECT	HLAB FR-250,280 (4254)	COD PROJ & FILE # T-009-A \ 3050997						
Q.D CHK		SCALE	NONE	TITLE TERMINAL BOX ASS'Y								
CHD BY		PROJECTN	3.7mm(3rd Angle)									
DSMD BY	KIM JONG SEON	DATE	96.10.30	REF. NO					Sheet No. of			
 HYUNDAI HEAVY INDUSTRIES CO., LTD.				DWG NO	3M-036962				Revision No.			