

## AC INDUCTION MOTOR DATA SHEET

Model No.or RFQ No.		Item No.	Rev. No.	[ 0 ]
Project Name		Project No.	Quantity	sets
GENERAL SPECIFICATION		PERFORMANCE DATA		
Frame Size	280LL	Rated Output	200 kW	268 HP
Type	HS-200/2	Number of Poles	2	
Enclosure(Protection)	Totally Enclosed ( IP55 )	Rotor Type	Squirrel Cage	
Method of Cooling	IC411(FC)	Starting Method*	<input checked="" type="checkbox"/> D.O.L <input type="checkbox"/> Y- Δ	
Rated Frequency	60 Hz	Rated Voltage	440 V	380 V      220 V
Number of Phases	3	Current	Full Load	301.9 A      349.6 A      603.8 A
Insulation Class	<input checked="" type="checkbox"/> F <input type="checkbox"/> B <input type="checkbox"/> H		Locked-rotor**	630 %      630 %      630 %
Temp. Rise at full load (by resistance method)		Efficiency		
at 1.0 S.F	80 deg. C	50% Load      93.8 %		
Motor Location	<input type="checkbox"/> Indoor <input checked="" type="checkbox"/> Outdoor	75% Load      94.9 %		
Altitude	Less than 1000 meter	100% Load      95.0 %		
Relative Humidity	Less than 80 %	Power Factor(p.u)		
Ambient Temp.	40 deg. C (Max.)	50% Load      0.912		
Duty Type	Continuous ( S1 )	75% Load      0.915		
Service Factor	1.15	100% Load      0.915		
Mounting	<input type="checkbox"/> B3 <input type="checkbox"/> B5 <input checked="" type="checkbox"/> V1 <input type="checkbox"/> B3/B5	Speed at Full Load	3570 r.p.m	
Bearing	Type	Anti-Friction		
	DE/N-DE	6314C3 / 6314C3		
	Lubricant	Grease(Gadus S2 V 100 2)		
External Thrust	Not applicable			
Coupling Method	<input checked="" type="checkbox"/> Direct <input type="checkbox"/> V-Belt	Moment of Inertia (J)		
Shaft Extension	<input checked="" type="checkbox"/> Single <input type="checkbox"/> Double	Load(Max.)      19.550 kg·m²		
Terminal Box	Main	<input type="checkbox"/> Steel <input checked="" type="checkbox"/> Cast Iron	Motor      3.595 kg·m²	
	Aux.	<input type="checkbox"/> Yes <input checked="" type="checkbox"/> No	Sound Pressure Level (No-load & mean value at 1m from motor)	
	Location	Refer to Outline Drawing		
Application		Vibration      2.2 mm/sec (r.m.s)		
Area classification	Non-Hazardous	Permissible number of consecutive starts		
Type of Ex-Protection	Not applicable	Cold      3 times		
Applicable Standard	KS,IEC,NEMA MG1 Part30(Vpeak)	Hot      2 times		
		Paint	Munsell No.	4.0PB5.4/5.5(VL-451)
ACCESSORIES		SUBMITTAL DRAWING		
		Outline Dimension Drawing \ Motor Weight(Approx.)		
		B3		kg
		B5		kg
		V1	TJ8XPC50	1170 kg
		B3/B5		kg
		Main T-Box Ass'y	3M-016882	
SPARE PARTS		REMARK		
		High Efficiency		
		*. For use on PWM VFD 10:1VT, 3:1CT@1.0S.F&F Temp. rise		
		Date	DSND	CHKD
		2010-05-28	R.G. KIM	O.J. KIM
				CHKD
				J.H. KIM
				APPD
				K.J. KANG

Note: Others not mentioned in this data sheet shall be in accordance with maker standard.

Above technical data are only design values and shall be guaranteed with tolerance of applicable standard.

Inspection and performance test shall be maker standard, if not mentioned.

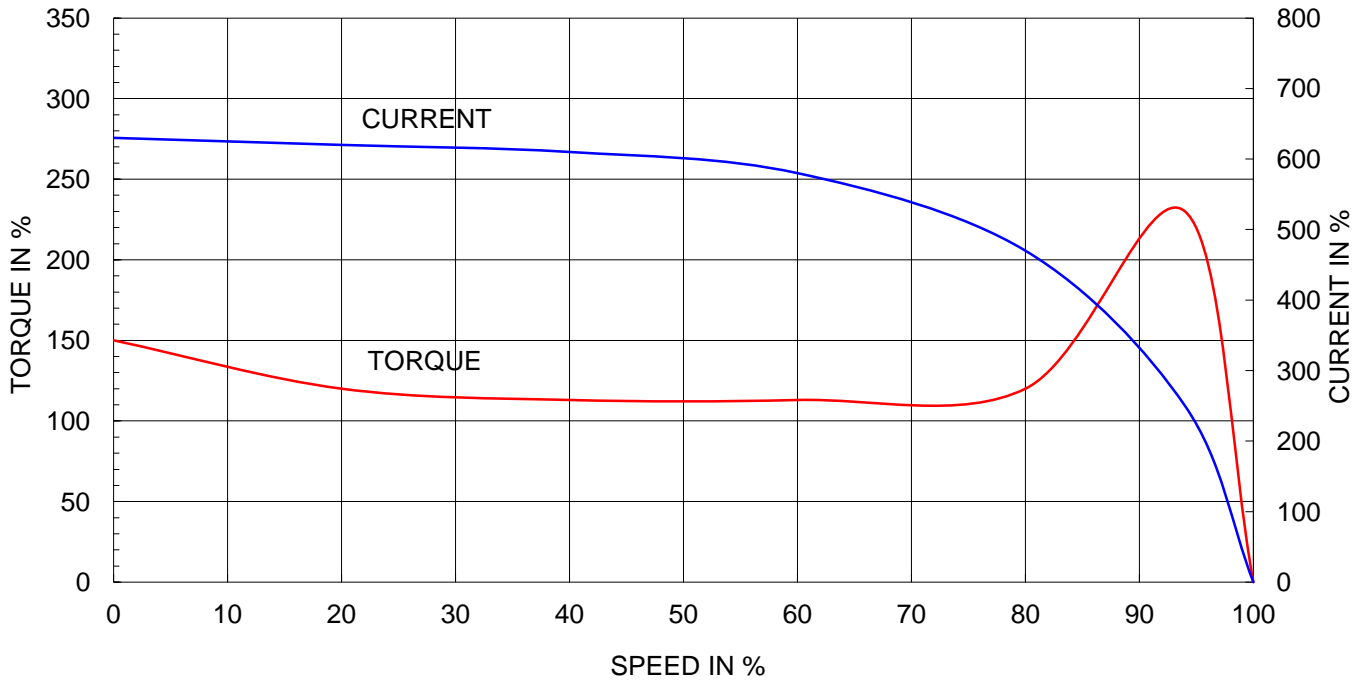
\* In case of Inverter-Fed Motor, performance data is based on sine wave tests.

\*\* Data is based on when the motor is supplied at rated voltage & frequency, and the data is expressed as a percentage of full-load value.

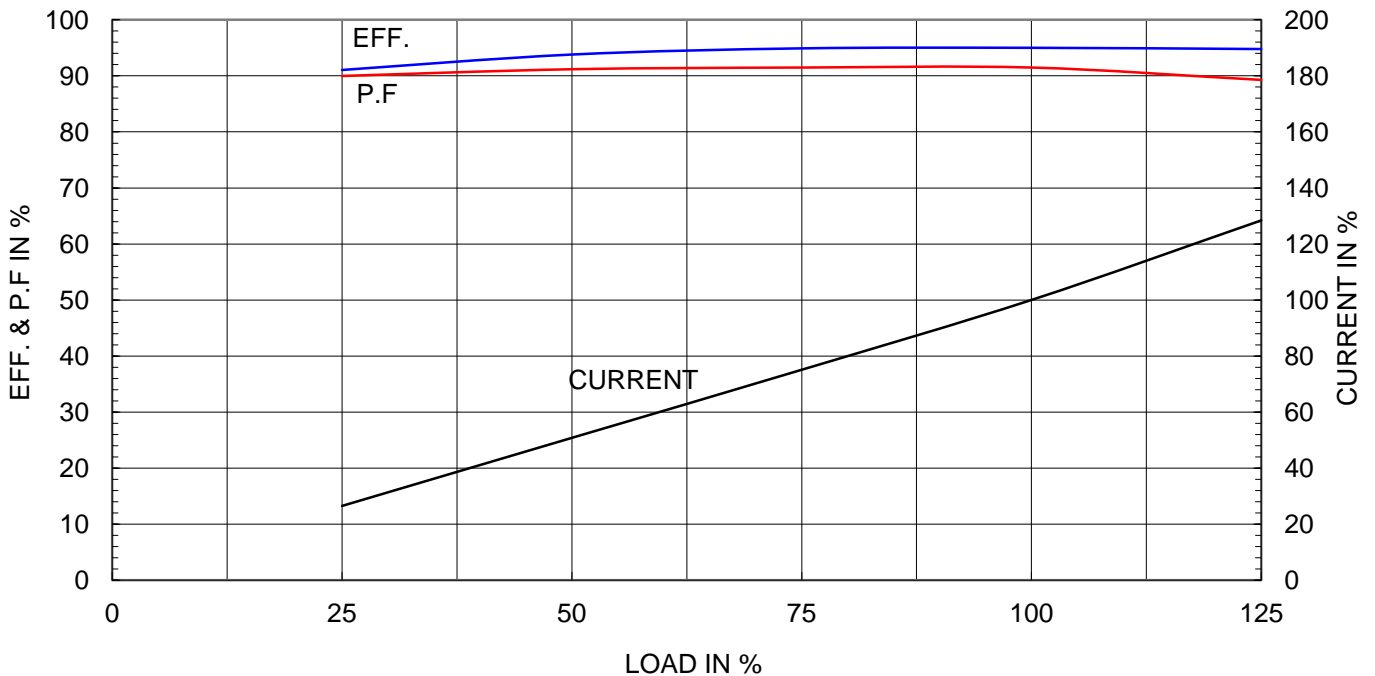
Type	:	HS
Full Load Torque	:	54.6 Kg.m
Motor moment of Inertia (J)	:	3.595 Kg.m <sup>2</sup>
Load moment of Inertia (J)	:	19.550 Kg.m <sup>2</sup>

200 kW	2 P	60 Hz	
Speed at Full Load :			
3570 RPM			
Rated Voltage	440V	380V	220V
Full Load Current	301.9A	349.6A	603.8A

SPEED VS TORQUE & CURRENT CURVE



OUTPUT VS EFF., P.F & CURRENT CURVE





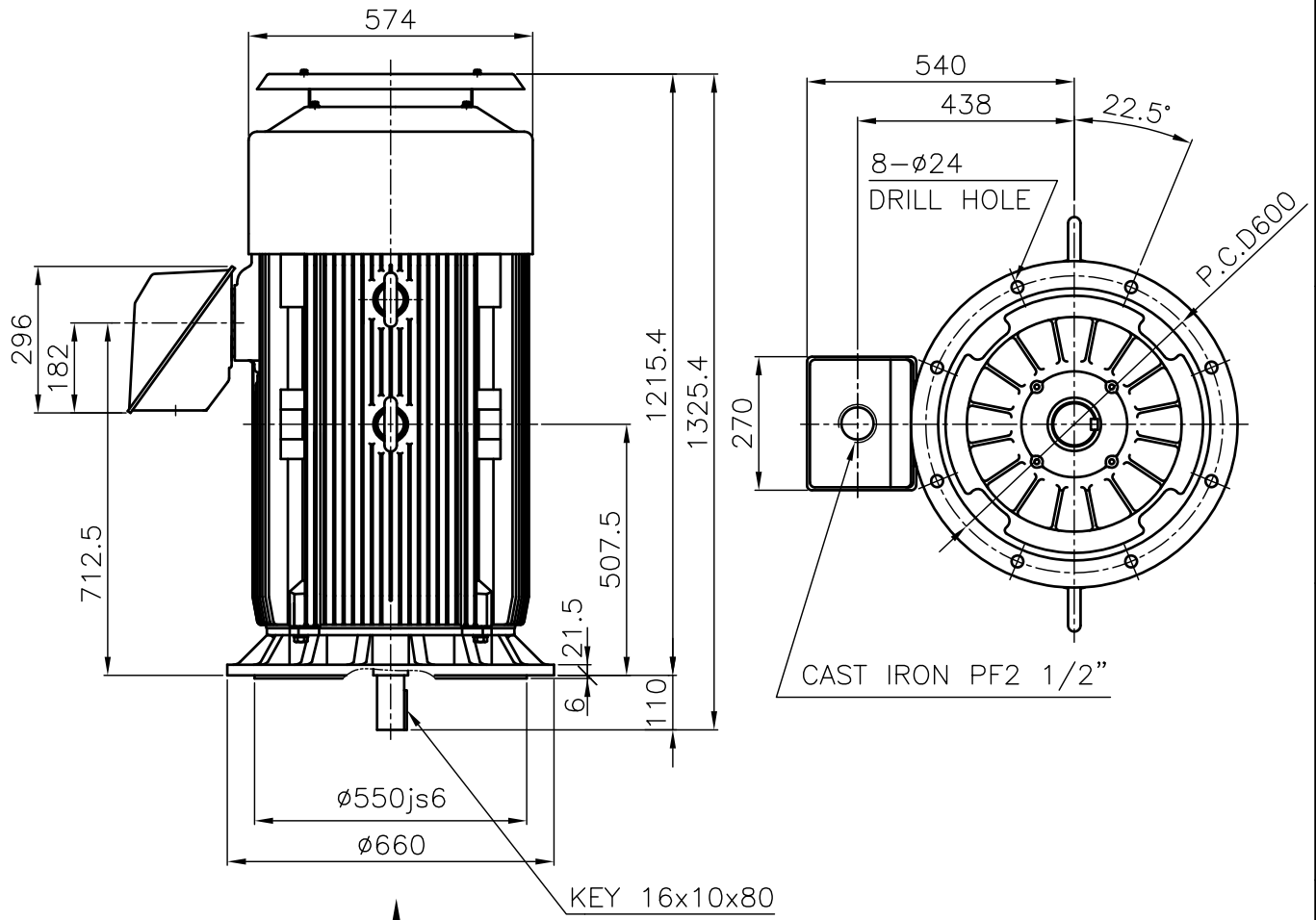
# TEFC

## THREE PHASE INDUCTION MOTOR

**TYPE**

(1) TNB , TDB

CAST IRON FRAME



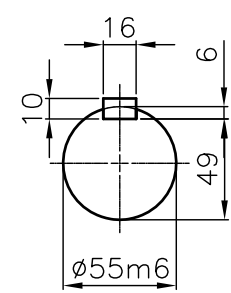
"A"

**NOTE**

1. TOLERANCE :

RABBET DIAMETER	ø550js6	±0.022
SHAFT DIAMETER	ø55m6	+0.030 +0.011
KEYWAY WIDTH	16P9	-0.018 -0.061
KEYWAY DEPTH	6	+0.2 0

2. The type (1) - "TNB, TDB" is for HHI's standard products and it can be changed for customer's requirements or detail designing.



**VIEW "A"**  
SCALE 4/1

TEFC STANDARD

CAD PROJ \ FILE  
MMSTDMTR/TJ8XPC50

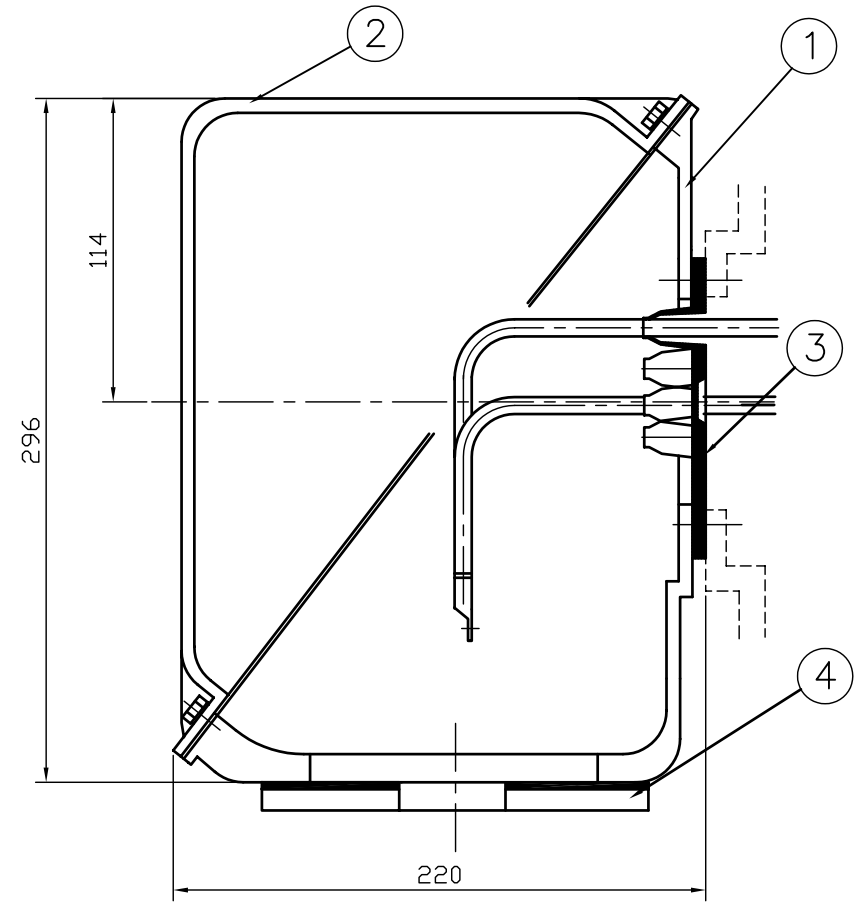
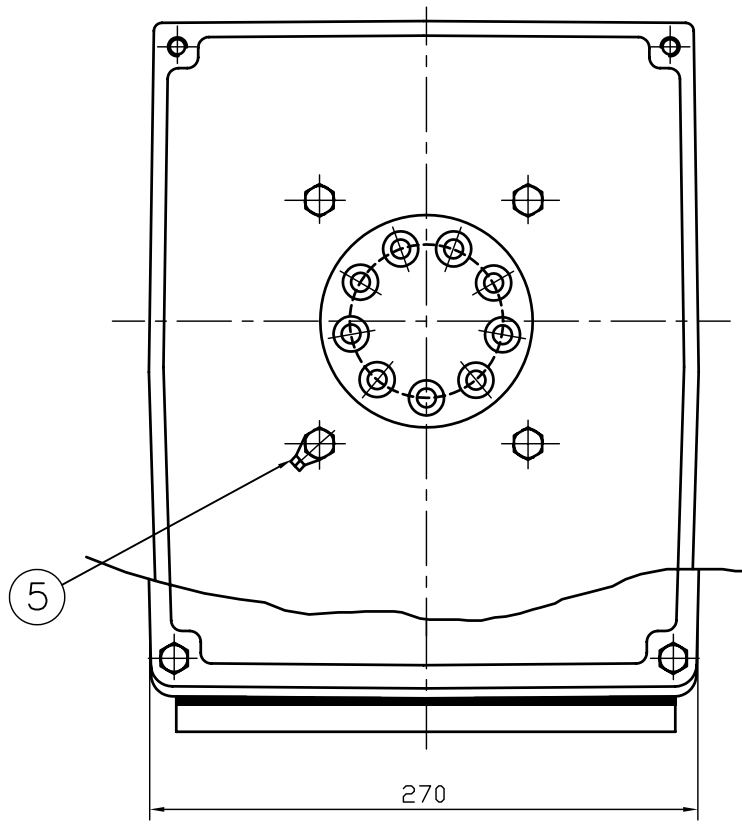
APPD BY	KANG K.J.	UNIT	MM
CHKD BY	KIM O.J.	SCALE	1/15
CHKD BY	LEE N.D.	PROJEC'N	3rd Angle
DSND BY	KIM RYANG GYU	DATE	2007.03.23

SUBJECT	KS Fr.280LL TEFC	
TITLE	<p align="center"><b>OUTLINE</b> THREE-PHASE INDUCTION MOTOR</p>	



REF. NO	L3-SERIES	Sheet No. of
DWG NO	TJ8XPC50	Revision No. 0

본 도면은 현대중공업(주) 재산이므로 허가없이  
복사할 수 없음 (도면제출 시 유의하시기 바랍니다.)



1	EARTH TERMINAL LUG						5
1	CABLE ENTRY PLATE						4
1	GASKET	NBR					3
1	TERMINAL BOX COVER	CAST IRON					2
1	TERMINAL BOX BODY	CAST IRON					1

Q'TY	DESCRIPTION	MATERIAL	DIMENSION	WEIGHT	PART NO.	REMARK	NO.
APPD BY	김진오	UNIT	MM	SUBJECT	HLA6 - 250,280Fr. CAD PROJ FILE		
Q.P CHK	주영걸	SCALE	NONE	TITLE	(CAST IRON)		
CHKD BY	권오철	PROJEC'N	3각법(3rd Angle)	TERMINAL BOX ASS'Y			
DSND BY	김헌태	DATE	92.06.05	REF. NO		Sheet No. of	
				DWG NO	3M-016882	Revision No.	

REV	DATE	CONTENTS	REVD BY	CHKD BY	Q.P CHK	APPD BY
1						
2						
3						
4						