

Model No. or RFQ No.		Item No.		Rev. No. [ 0 ]			
Project Name		Project No.		Quantity sets			
GENERAL SPECIFICATION			PERFORMANCE DATA				
Frame Size	280LL		Rated Output	200 kW 268 HP			
Type	HS-200/2		Number of Poles	2			
Enclosure(Protection)	Totally Enclosed ( IP55 )		Rotor Type	Squirrel Cage			
Method of Cooling	IC411(FC)		Starting Method*	<input checked="" type="checkbox"/> D.O.L <input type="checkbox"/> Y- Δ			
Rated Frequency	60 Hz		Rated Voltage	440 V	380 V      220 V		
Number of Phases	3		Current	Full Load	301.9 A      349.6 A      603.8 A		
Insulation Class	<input checked="" type="checkbox"/> F <input type="checkbox"/> B <input type="checkbox"/> H			Locked-rotor**	630 %      630 %      630 %		
Temp. Rise at full load (by resistance method)			Efficiency				
at 1.0 S.F      80 deg. C			50% Load      93.8 %				
Motor Location	<input checked="" type="checkbox"/> Indoor <input type="checkbox"/> Outdoor		75% Load      94.9 %				
Altitude	Less than 1000 meter		100% Load      95.0 %				
Relative Humidity	Less than 80 %		Power Factor(p.u)				
Ambient Temp.	40 deg. C (Max.)		50% Load      0.912				
Duty Type	Continuous ( S1 )		75% Load      0.915				
Service Factor	1.15		100% Load      0.915				
Mounting	<input type="checkbox"/> B3 <input checked="" type="checkbox"/> B5 <input type="checkbox"/> V1 <input type="checkbox"/> B3/B5		Speed at Full Load      3570 r.p.m				
Bearing	Type	Anti-Friction		Torque			
	DE/N-DE	6314C3 / 6314C3		Full Load      54.6 kg·m			
	Lubricant	Grease(Gadus S2 V 100 2)		Locked-rotor**      150 %			
External Thrust	Not applicable		Breakdown**      230 %				
Coupling Method	<input checked="" type="checkbox"/> Direct <input type="checkbox"/> V-Belt		Moment of Inertia (J)				
Shaft Extension	<input checked="" type="checkbox"/> Single <input type="checkbox"/> Double		Load(Max.)      19.550 kg·m <sup>2</sup>				
Terminal Box	Main	<input type="checkbox"/> Steel <input checked="" type="checkbox"/> Cast Iron		Motor      3.595 kg·m <sup>2</sup>			
	Aux.	<input type="checkbox"/> Yes <input checked="" type="checkbox"/> No		Sound Pressure Level (No-load & mean value at 1m from motor)			
	Location	Refer to Outline Drawing		92 dB(A)			
Application			Vibration      2.2 mm/sec (r.m.s)				
Area classification	Non-Hazardous		Permissible number of consecutive starts				
Type of Ex-Protection	Not applicable		Cold      3 times				
Applicable Standard	KS,IEC,NEMA MG1 Part30(Vpeak)		Hot      2 times				
			Paint	Munsell No.	4.0PB5.4/5.5(VL-451)		
ACCESSORIES			SUBMITTAL DRAWING				
			Outline Dimension Drawing \ Motor Weight(Approx.)				
			B3		kg		
			B5	TJ8XBC50	1170 kg		
			V1		kg		
			B3/B5		kg		
			Main T-Box Ass'y	3M-016882			
SPARE PARTS			REMARK				
			High Efficiency				
			*. For use on PWM VFD 10:1VT, 3:1CT@1.0S.F&F Temp. rise				
			Date	DSND	CHKD	CHKD	APPD
			2010-05-28	R.G. KIM	O.J. KIM	J.H. KIM	K.J. KANG

Note: Others not mentioned in this data sheet shall be in accordance with maker standard.

Above technical data are only design values and shall be guaranteed with tolerance of applicable standard.

Inspection and performance test shall be maker standard, if not mentioned.

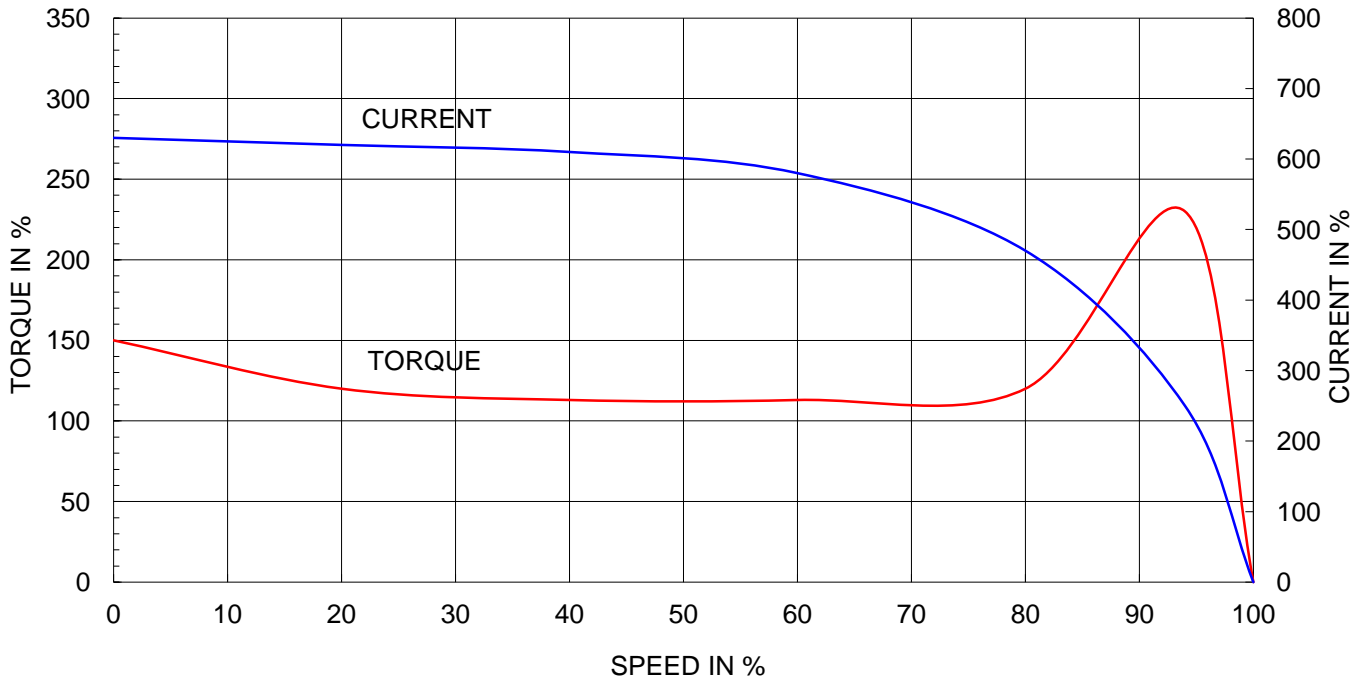
\* In case of Inverter-Fed Motor, performance data is based on sine wave tests.

\*\* Data is based on when the motor is supplied at rated voltage & frequency, and the data is expressed as a percentage of full-load value.

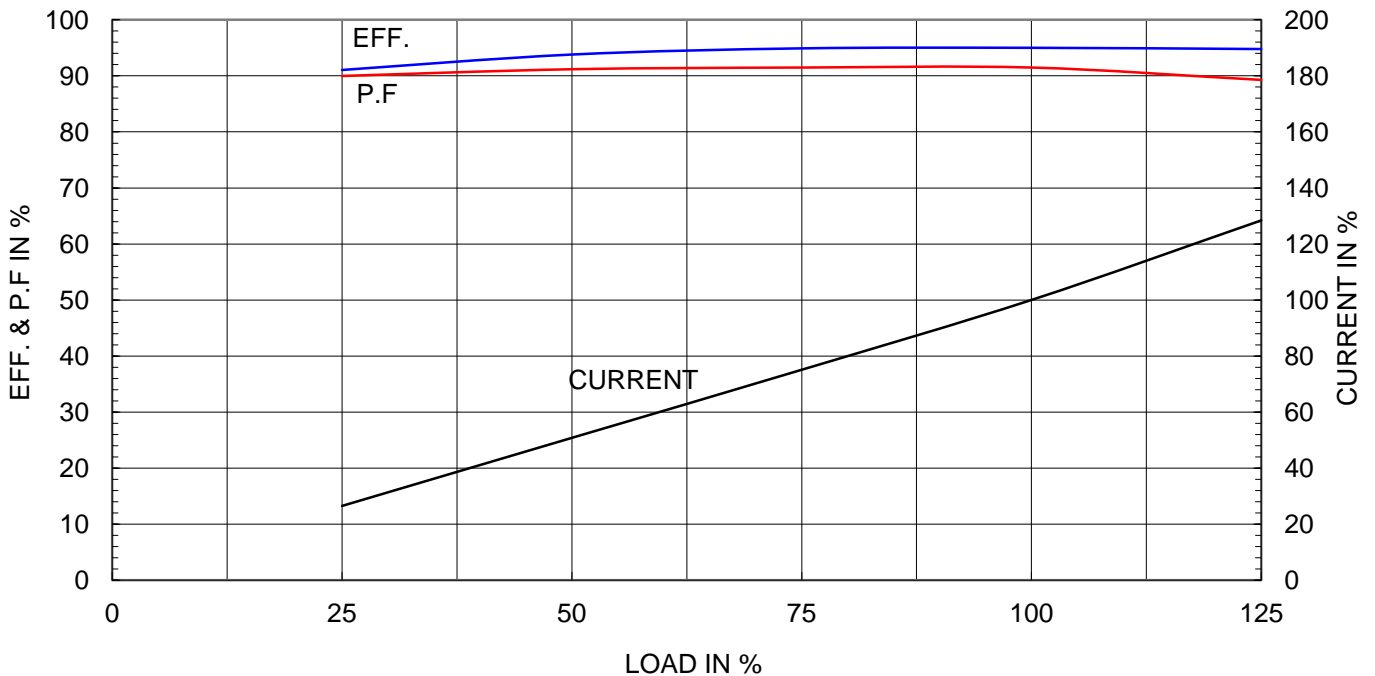
Type	:	HS
Full Load Torque	:	54.6 Kg.m
Motor moment of Inertia (J)	:	3.595 Kg.m <sup>2</sup>
Load moment of Inertia (J)	:	19.550 Kg.m <sup>2</sup>

200 kW	2 P	60 Hz	
Speed at Full Load :			
3570 RPM			
Rated Voltage	440V	380V	220V
Full Load Current	301.9A	349.6A	603.8A

SPEED VS TORQUE & CURRENT CURVE




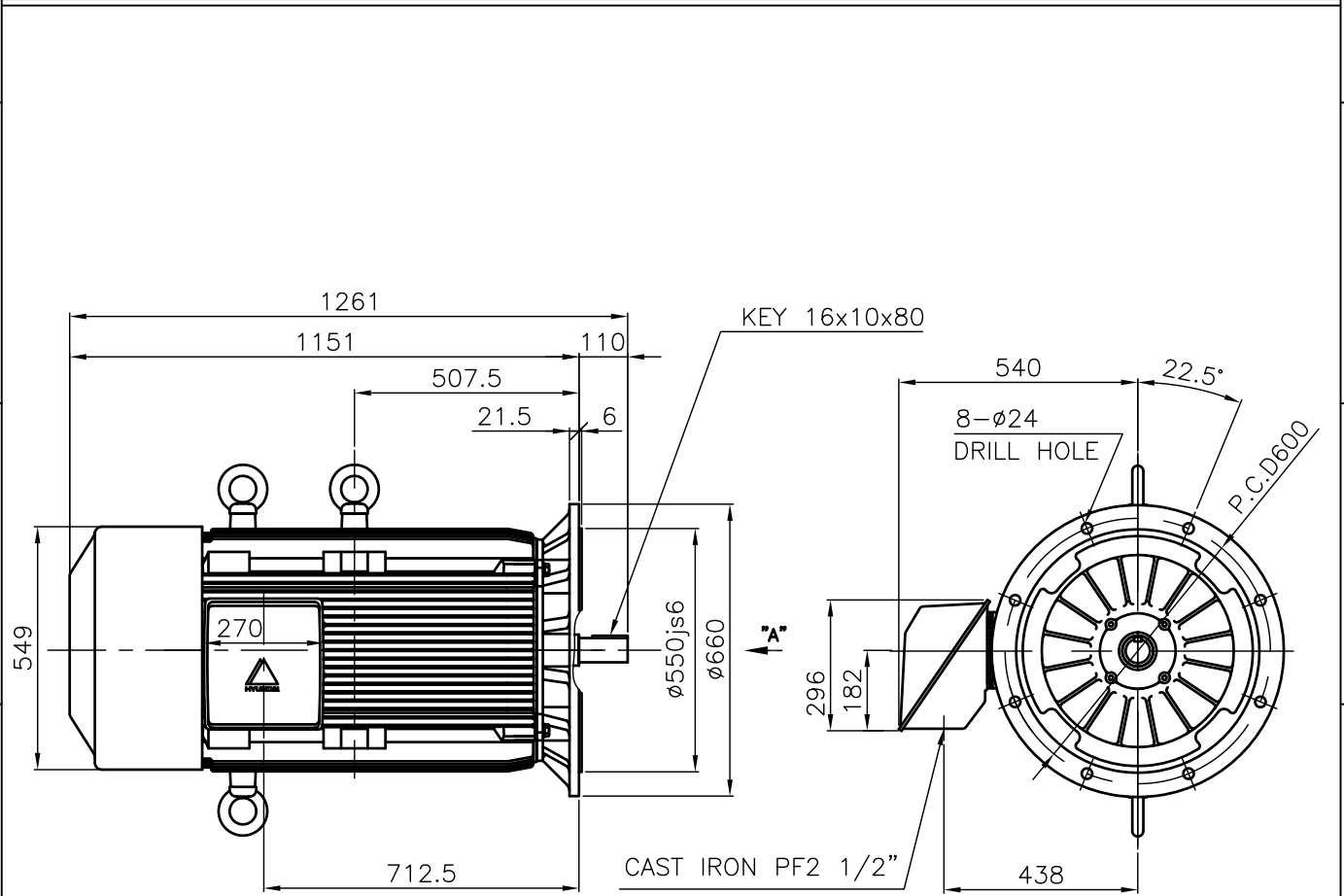
OUTPUT VS EFF., P.F & CURRENT CURVE



본 도면은 현대중공업(주) 재산이므로  
허가없이 복사할 수 없음 (취급주의)

THIS DRAWING IS PROPRIETARY TO HHI. NO PART OF THIS DRAWING  
MAYBE REPRODUCED WITHOUT THE PERMISSION OF HHI.

1		2		3		4	
 <b>HYUNDAI</b> HEAVY INDUSTRIES CO., LTD.		<h1>TEFC</h1> <h2>THREE PHASE INDUCTION MOTOR</h2>				<b>TYPE</b> (1) TNB , TDB CAST IRON FRAME	

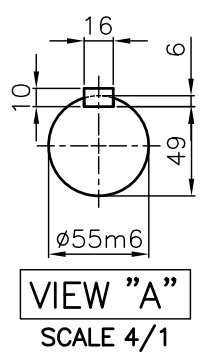



**NOTE**

1.TOLERANCE :

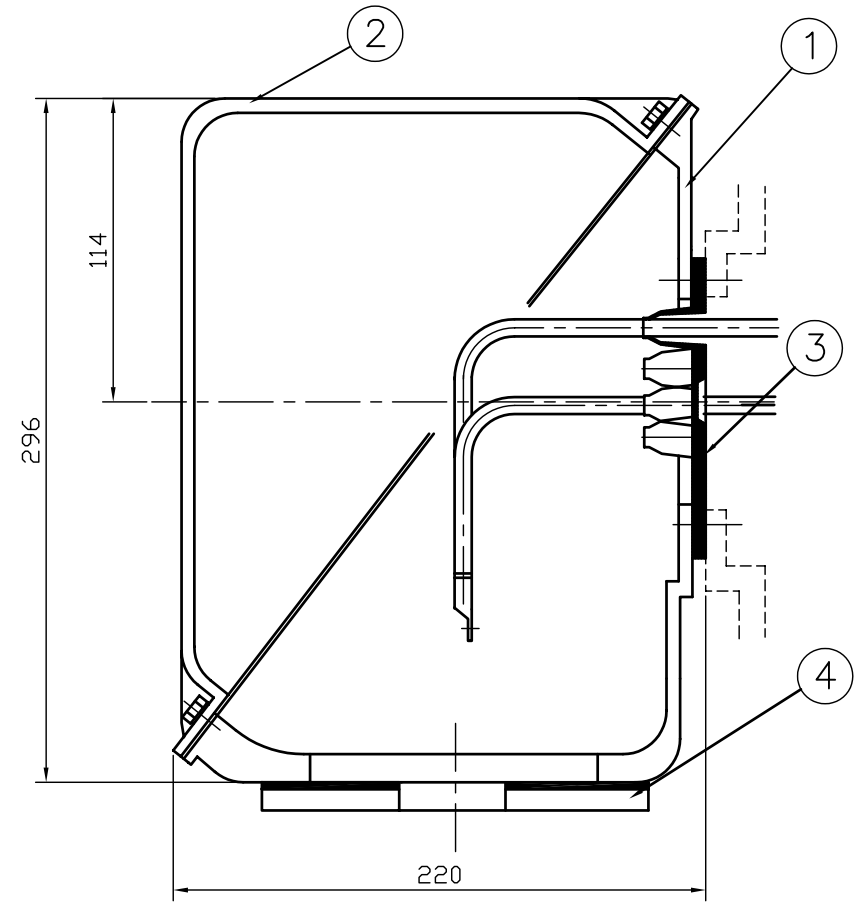
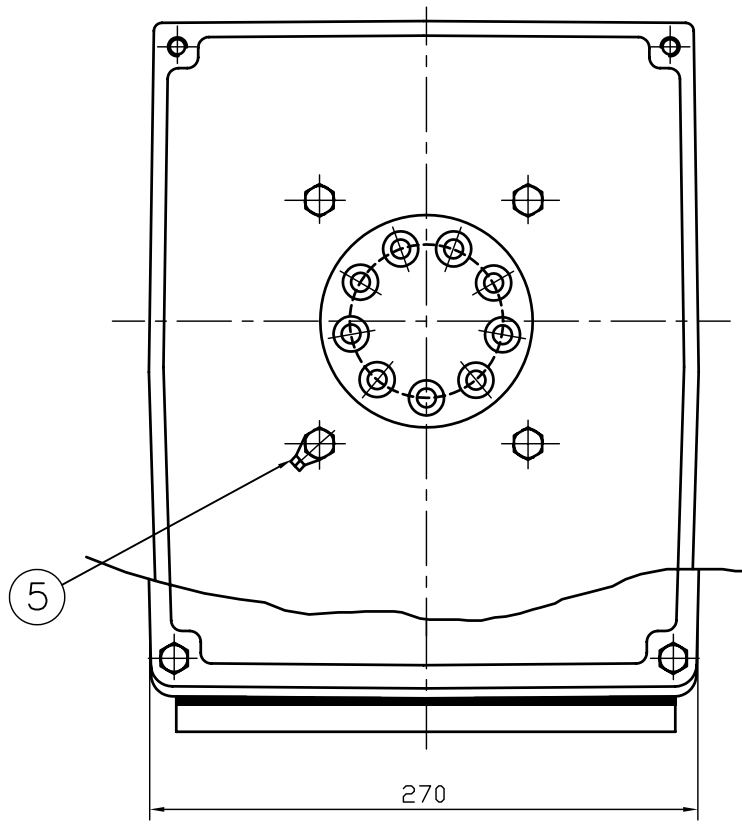
RABBET DIAMETER	ø550js6	±0.022
SHAFT DIAMETER	ø55m6	+0.030 +0.011
KEYWAY WIDTH	16P9	-0.018 -0.061
KEYWAY DEPTH	6	+0.2 0

2.The type (1)-"TNB , TDB" is for HHI's standard products and it can be changed for customer's requirements or detail designing.



				TEFC STANDARD		
APPD BY	KANG K.J.	UNIT	MM	SUBJECT	KS Fr.280LL TEFC	CAD PROJ \ FILE
CHKD BY	KIM O.J.	SCALE	1/17			MMSTDMTR/TJ8XBC50
CHKD BY	LEE N.D.	PROJEC'N	3rd Angle	<b>OUTLINE</b> THREE-PHASE INDUCTION MOTOR		
DSND BY	KIM RYANG GYU	DATE	2007.03.23			
 <b>HYUNDAI</b> HEAVY INDUSTRIES CO., LTD. INDUSTRIAL & POWER SYSTEMS				REF. NO	L3-Series	Sheet No. of
				DWG NO	TJ8XBC50	Revision No. 0

본 도면은 현대중공업(주) 재산이므로 허가없이  
복사할 수 없음 (도면제출 시 유의하시기 바랍니다.)



1	EARTH TERMINAL LUG						5
1	CABLE ENTRY PLATE						4
1	GASKET	NBR					3
1	TERMINAL BOX COVER	CAST IRON					2
1	TERMINAL BOX BODY	CAST IRON					1

Q'TY	DESCRIPTION	MATERIAL	DIMENSION	WEIGHT	PART NO.	REMARK	NO.
APPD BY	김진오	UNIT	MM	SUBJECT	HLA6 - 250,280Fr. CAD PROJ FILE		
Q.P CHK	주영걸	SCALE	NONE	TITLE	(CAST IRON)		
CHKD BY	권오철	PROJEC'N	3각법(3rd Angle)	TERMINAL BOX ASS'Y			
DSND BY	김헌태	DATE	92.06.05	REF. NO		Sheet No. of	
				DWG NO	3M-016882	Revision No.	

REV	DATE	CONTENTS	REVD BY	CHKD BY	Q.P CHK	APPD BY
1						
2						
3						
4						