

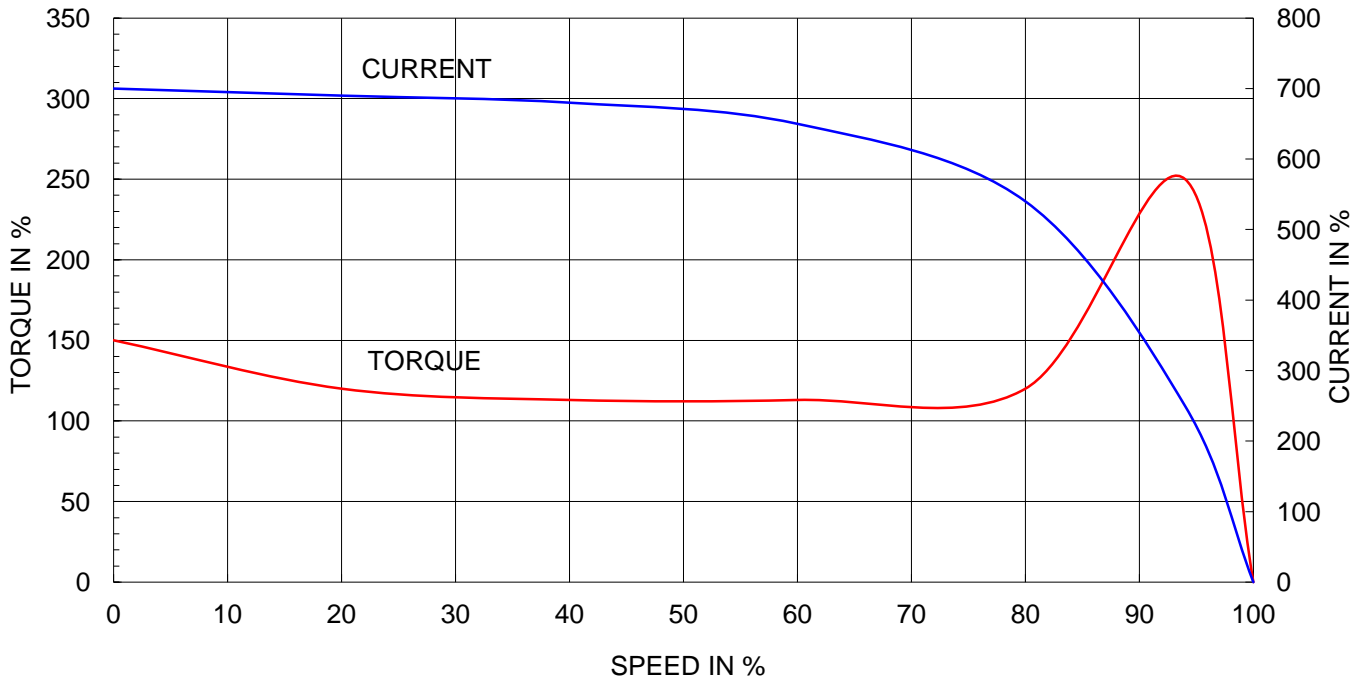
Model No.or RFQ No.		Item No.		Rev. No. [0]		
Project Name		Project No.		Quantity sets		
GENERAL SPECIFICATION			PERFORMANCE DATA			
Frame Size		280M		Rated Output 132 kW 175 HP		
Type		HS-132/2		Number of Poles 2		
Enclosure(Protection)		Totally Enclosed (IP55)		Rotor Type Squirrel Cage		
Method of Cooling		IC411(FC)		Starting Method* <input checked="" type="checkbox"/> D.O.L <input type="checkbox"/> Y- Δ		
Rated Frequency		60 Hz		Rated Voltage 440 V 380 V 220 V		
Number of Phases		3		Current Full Load 200.3 A 231.9 A 400.6 A Locked-rotor** 700 % 700 % 700 %		
Insulation Class		<input checked="" type="checkbox"/> F <input type="checkbox"/> B <input type="checkbox"/> H				
Temp. Rise at full load (by resistance method)		at 1.0 S.F 80 deg. C		Efficiency		
Motor Location <input type="checkbox"/> Indoor <input checked="" type="checkbox"/> Outdoor				50% Load 92.8 %		75% Load 94.1 %
Altitude		Less than 1000 meter		100% Load 94.5 %		
Relative Humidity		Less than 80 %		Power Factor(p.u)		
Ambient Temp.		40 deg. C (Max.)		50% Load 0.912		
Duty Type		Continuous (S1)		75% Load 0.915		
Service Factor		1.15		100% Load 0.915		
Mounting		<input type="checkbox"/> B3 <input type="checkbox"/> B5 <input checked="" type="checkbox"/> V1 <input type="checkbox"/> B3/B5		Speed at Full Load 3570 r.p.m		
Bearing		Type Anti-Friction		Torque		
		DE/N-DE 6314C3 / 6314C3		Full Load 36.0 kg·m		
		Lubricant Grease(Gadus S2 V 100 2)		Locked-rotor** 150 %		
External Thrust		Not applicable		Breakdown** 250 %		
Coupling Method		<input checked="" type="checkbox"/> Direct <input type="checkbox"/> V-Belt		Moment of Inertia (J)		
Shaft Extension		<input checked="" type="checkbox"/> Single <input type="checkbox"/> Double		Load(Max.) 14.375 kg·m ²		
Terminal Box		Main <input type="checkbox"/> Steel <input checked="" type="checkbox"/> Cast Iron		Motor 2.400 kg·m ²		
		Aux. <input type="checkbox"/> Yes <input checked="" type="checkbox"/> No		Sound Pressure Level (No-load & mean value at 1m from motor)		
Location		Refer to Outline Drawing		92 dB(A)		
Application				Vibration 2.2 mm/sec (r.m.s)		
Area classification		Non-Hazardous		Permissible number of consecutive starts Cold 3 times		
Type of Ex-Protection		Not applicable		Hot 2 times		
Applicable Standard		KS,IEC,NEMA MG1 Part30(Vpeak)		Paint Munsell No. 4.0PB5.4/5.5(VL-451)		
ACCESSORIES			SUBMITTAL DRAWING			
		Outline Dimension Drawing		Motor Weight(Approx.)		
		B3		kg		
		B5		kg		
		V1		TJ80PC50 870 kg		
		B3/B5		kg		
Main T-Box Ass'y		3M-016882				
SPARE PARTS		REMARK		High Efficiency		
				*. For use on PWM VFD 10:1VT, 3:1CT@1.0S.F&F Temp. rise		
		Date	DSND	CHKD	CHKD	APPD
		2010-05-28	R.G. KIM	O.J. KIM	J.H. KIM	K.J. KANG

Note: Others not mentioned in this data sheet shall be in accordance with maker standard.
 Above technical data are only design values and shall be guaranteed with tolerance of applicable standard.
 Inspection and performance test shall be maker standard, if not mentioned.
 * In case of Inverter-Fed Motor, performance data is based on sine wave tests.
 ** Data is based on when the motor is supplied at rated voltage & frequency, and the data is expressed as a percentage of full-load value.

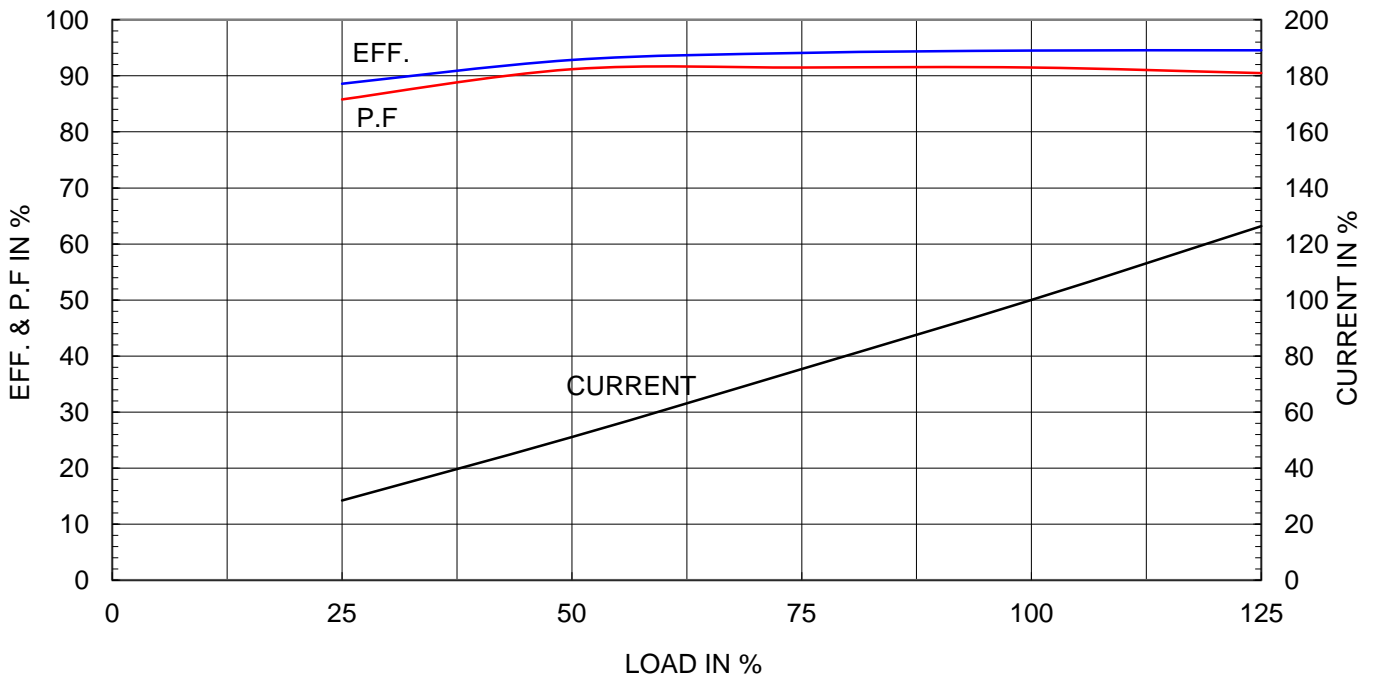
Type	:	HS
Full Load Torque	:	36.0 Kg.m
Motor moment of Inertia (J)	:	2.400 Kg.m ²
Load moment of Inertia (J)	:	14.375 Kg.m ²

132 kW	2 P	60 Hz	
Speed at Full Load :			
3570 RPM			
Rated Voltage	440V	380V	220V
Full Load Current	200.3A	231.9A	400.6A

SPEED VS TORQUE & CURRENT CURVE




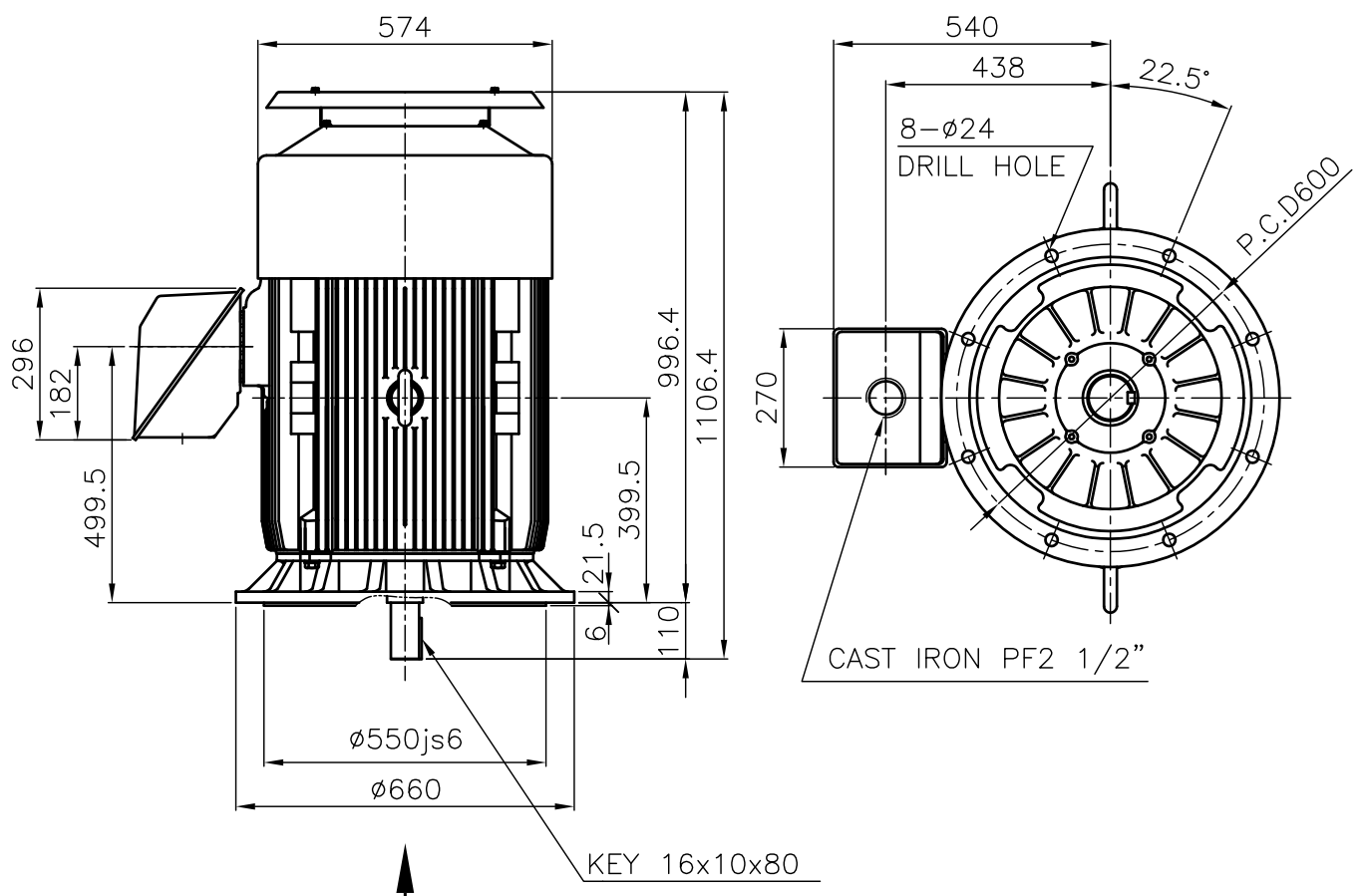
OUTPUT VS EFF., P.F & CURRENT CURVE



본 도면은 현대중공업(주) 재산이므로
허가없이 복사할 수 없음 (취급유의)

THIS DRAWING IS PROPRIETARY TO HHI. NO PART OF THIS DRAWING
MAYBE REPRODUCED WITHOUT THE PERMISSION OF HHI.

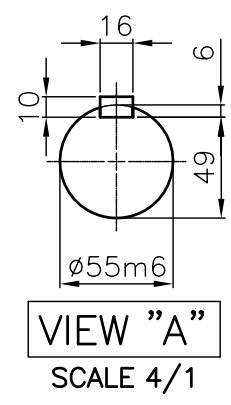
	TEFC	TYPE	(1) TNB , TDB
THREE PHASE INDUCTION MOTOR			CAST IRON FRAME




NOTE

1.TOLERANCE :

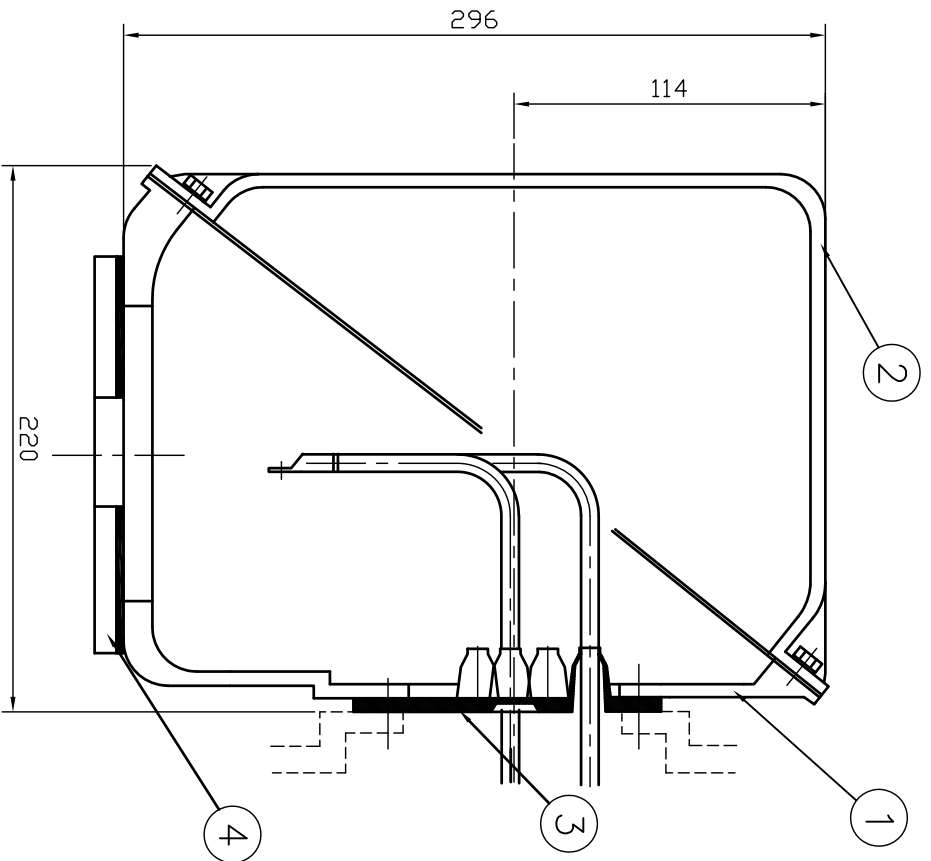
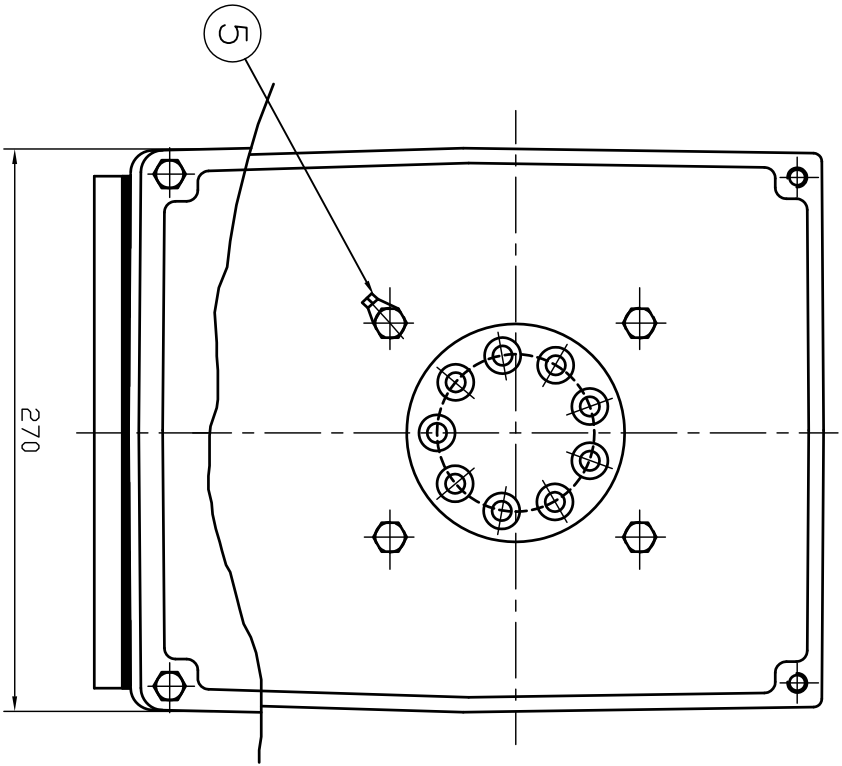
RABBET DIAMETER	ø550js6	±0.022
SHAFT DIAMETER	ø55m6	+0.030 +0.011
KEYWAY WIDTH	16P9	-0.018 -0.061
KEYWAY DEPTH	6	+0.2 0



2.The type (1)-"TNB, TDB" is for HHI's standard products and it can be changed for customer's requirements or detail designing.

				TEFC STANDARD		
APPD BY	KANG K.J.	UNIT	MM	SUBJECT	KS Fr.280 TEFC	CAD PROJ \ FILE
CHKD BY	KIM O.J.	SCALE	1/15			MMSTDMTR/TJ80PC50
CHKD BY	LEE N.D.	PROJEC'N	3rd Angle	TITLE OUTLINE THREE-PHASE INDUCTION MOTOR		
DSND BY	KIM RYANG GYU	DATE	2004.02.13			
				REF. NO	L3-SERIES	Sheet No. of
				DWG NO	TJ80PC50	Revision No. 0

본 도면은 현대중전기(주) 재산이므로 허가없이
복사할 수 없음 (도면취급 시 유의하시기 바람.)



REV	DATE	CONTENTS	REV'D BY	CHK'D BY	Q.P. CHK	APP'D BY
1						
2						
3						
4						

1	EARTH TERMINAL LUG												
1	CABLE ENTRY PLATE												
1	GASKET	NBR											
1	TERMINAL BOX COVER	CAST IRON											
1	TERMINAL BOX BODY	CAST IRON											

APP'D BY	권인오	UNIT	MM
Q.P. CHK	주영철	SCALE	NONE
CHK'D BY	권오철	PROJEC'N	3 권(3rd Angle)
DSND BY	권현태	DATE	92.06.05

TITLE	TERMINAL BOX ASS'Y (CAST IRON)
SUBJECT	HLA6 - 250,280Fr.
REF. NO	
DWG NO	3M-016882
REMARK	CAD PROU \ FILE T-BOX-M \ 3M016882
PART NO.	
WEIGHT	
DIMENSION	
DESCRIPTION	

HYUNDAI
ELECTRICAL ENGINEERING CO., LTD.

Sheet No. of
Revision No.