

# AC INDUCTION MOTOR DATA SHEET

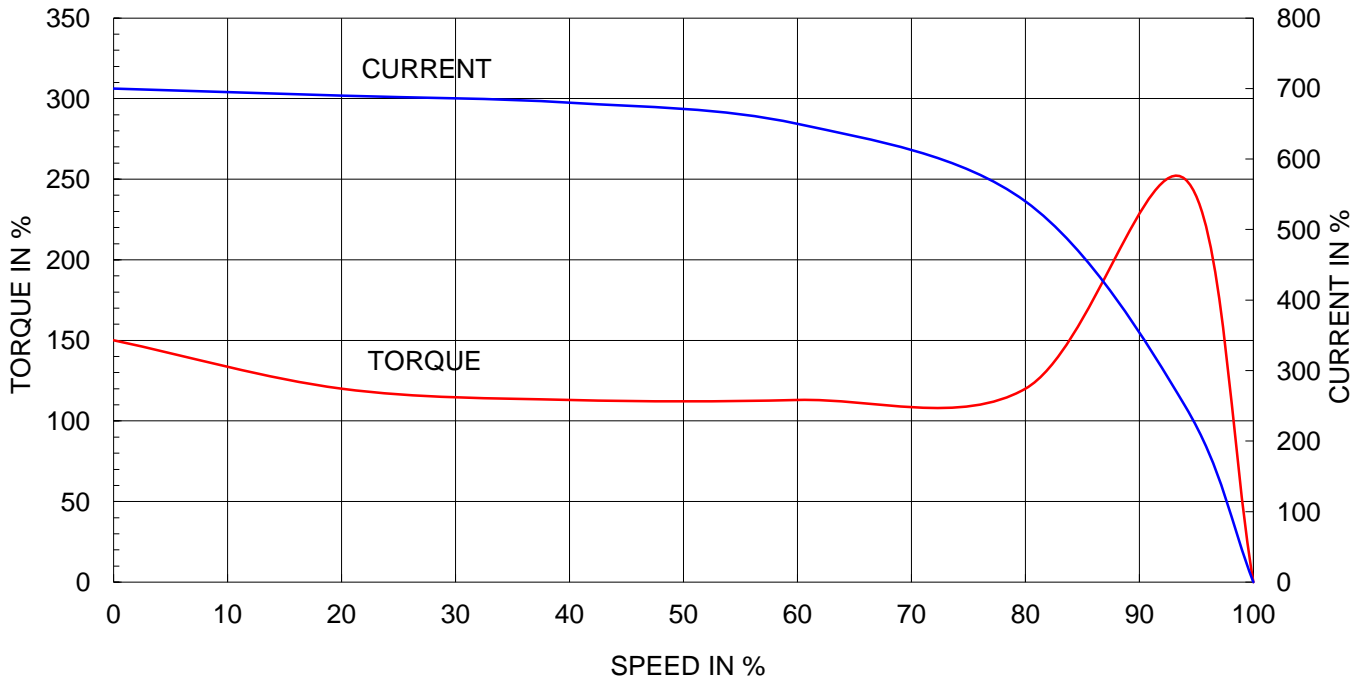
Model No.or RFQ No.		Item No.		Rev. No. [ 0 ]		
Project Name		Project No.		Quantity sets		
GENERAL SPECIFICATION			PERFORMANCE DATA			
Frame Size	280M		Rated Output	132 kW    175 HP		
Type	HS-132/2		Number of Poles	2		
Enclosure(Protection)	Totally Enclosed ( IP55 )		Rotor Type	Squirrel Cage		
Method of Cooling	IC411(FC)		Starting Method*	<input checked="" type="checkbox"/> D.O.L <input type="checkbox"/> Y- Δ		
Rated Frequency	60 Hz		Rated Voltage	440 V	380 V    220 V	
Number of Phases	3		Current	Full Load	200.3 A    231.9 A    400.6 A	
Insulation Class	<input checked="" type="checkbox"/> F <input type="checkbox"/> B <input type="checkbox"/> H			Locked-rotor**	700 %    700 %    700 %	
Temp. Rise at full load (by resistance method)			Efficiency			
at 1.0 S.F    80 deg. C			50% Load    92.8 %			
Motor Location <input checked="" type="checkbox"/> Indoor <input type="checkbox"/> Outdoor			75% Load    94.1 %			
Altitude    Less than 1000 meter			100% Load    94.5 %			
Relative Humidity    Less than 80 %			Power Factor(p.u)			
Ambient Temp.    40 deg. C (Max.)			50% Load    0.912			
Duty Type    Continuous ( S1 )			75% Load    0.915			
Service Factor    1.15			100% Load    0.915			
Mounting <input type="checkbox"/> B3 <input type="checkbox"/> B5 <input type="checkbox"/> V1 <input checked="" type="checkbox"/> B3/B5			Speed at Full Load    3570 r.p.m			
Bearing	Type	Anti-Friction		Torque		
	DE/N-DE	6314C3 / 6314C3		Full Load    36.0 kg·m		
Lubricant    Grease(Gadus S2 V 100 2)			Locked-rotor**    150 %			
External Thrust    Not applicable			Breakdown**    250 %			
Coupling Method <input checked="" type="checkbox"/> Direct <input type="checkbox"/> V-Belt			Moment of Inertia (J)			
Shaft Extension <input checked="" type="checkbox"/> Single <input type="checkbox"/> Double			Load(Max.)    14.375 kg·m <sup>2</sup>			
Terminal Box	Main	<input type="checkbox"/> Steel <input checked="" type="checkbox"/> Cast Iron		Motor    2.400 kg·m <sup>2</sup>		
	Aux.	<input type="checkbox"/> Yes <input checked="" type="checkbox"/> No		Sound Pressure Level (No-load & mean value at 1m from motor)		
Location    Refer to Outline Drawing			92 dB(A)			
Application			Vibration    2.2 mm/sec (r.m.s)			
Area classification    Non-Hazardous			Permissible number of consecutive starts			
Type of Ex-Protection    Not applicable			Cold    3 times			
Applicable Standard    KS,IEC,NEMA MG1 Part30(Vpeak)			Hot    2 times			
			Paint	Munsell No.	4.0PB5.4/5.5(VL-451)	
ACCESSORIES			SUBMITTAL DRAWING			
			Outline Dimension Drawing \ Motor Weight(Approx.)			
			B3			kg
			B5			kg
			V1			kg
			B3/B5		TJ8MCC50	835
Main T-Box Ass'y			3M-016882			
SPARE PARTS			REMARK			
			High Efficiency			
			*. For use on PWM VFD 10:1VT, 3:1CT@1.0S.F&F Temp. rise			
			Date	DSND	CHKD	
			2010-05-28	R.G. KIM	O.J. KIM    J.H. KIM    K.J. KANG	

Note: Others not mentioned in this data sheet shall be in accordance with maker standard.  
 Above technical data are only design values and shall be guaranteed with tolerance of applicable standard.  
 Inspection and performance test shall be maker standard, if not mentioned.  
 \* In case of Inverter-Fed Motor, performance data is based on sine wave tests.  
 \*\* Data is based on when the motor is supplied at rated voltage & frequency, and the data is expressed as a percentage of full-load value.

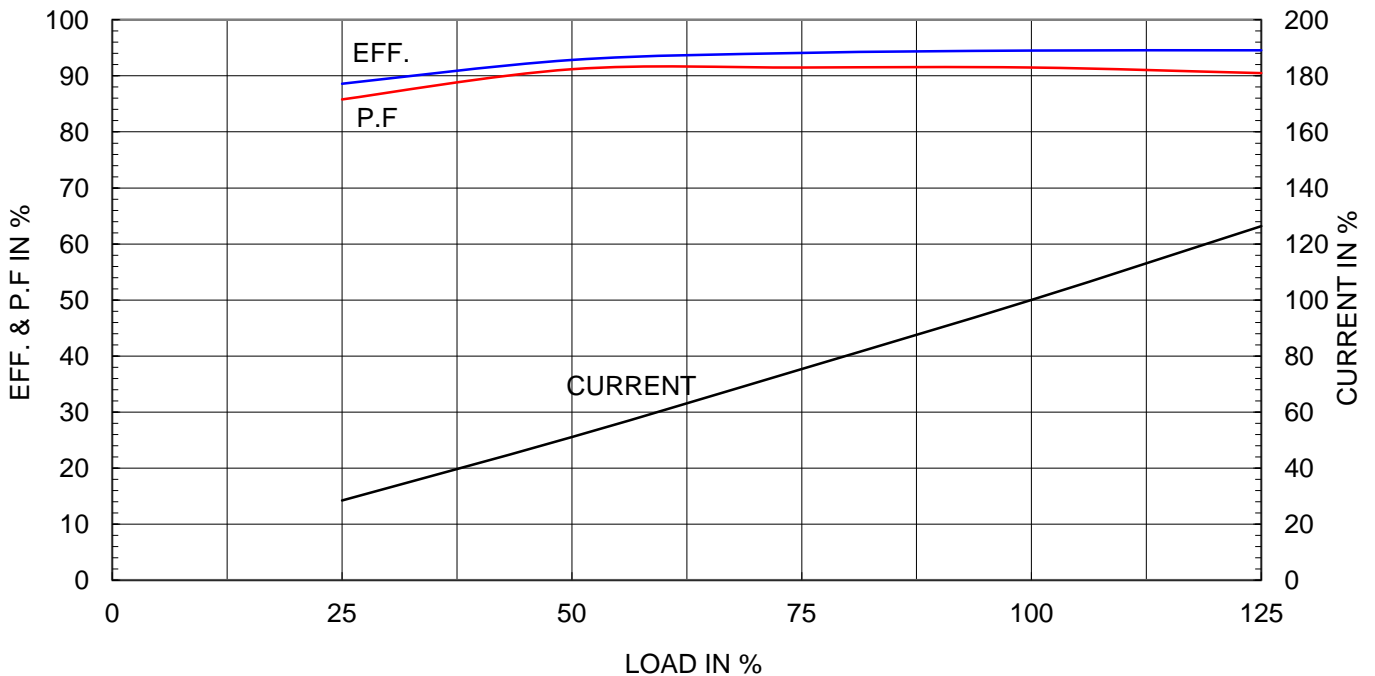
Type	:	HS
Full Load Torque	:	36.0 Kg.m
Motor moment of Inertia (J)	:	2.400 Kg.m <sup>2</sup>
Load moment of Inertia (J)	:	14.375 Kg.m <sup>2</sup>

132 kW	2 P	60 Hz	
Speed at Full Load :			
3570 RPM			
Rated Voltage	440V	380V	220V
Full Load Current	200.3A	231.9A	400.6A

SPEED VS TORQUE & CURRENT CURVE



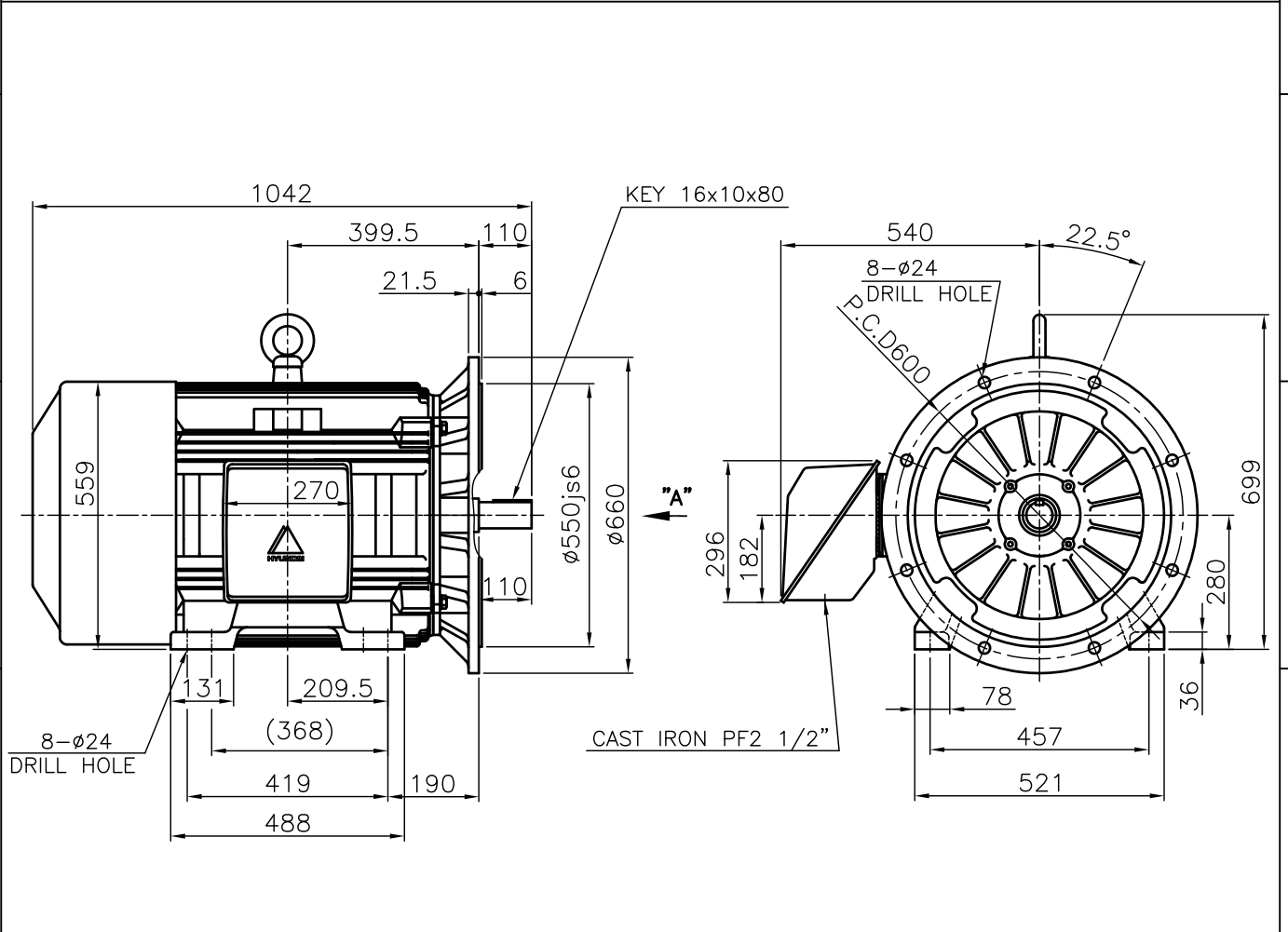
OUTPUT VS EFF., P.F & CURRENT CURVE



본 도면은 현대중공업(주) 재산이므로  
허가없이 복사할 수 없음 (취급유의)

THIS DRAWING IS PROPRIETARY TO HHI. NO PART OF THIS DRAWING  
MAYBE REPRODUCED WITHOUT THE PERMISSION OF HHI.

		<h1>TEFC</h1>		<b>TYPE</b> (1) TNB , TDB
		<b>THREE PHASE INDUCTION MOTOR</b>		

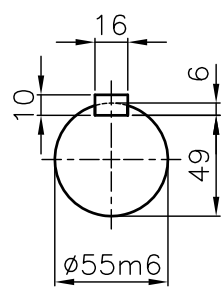


**NOTE**

1.TOLERANCE :

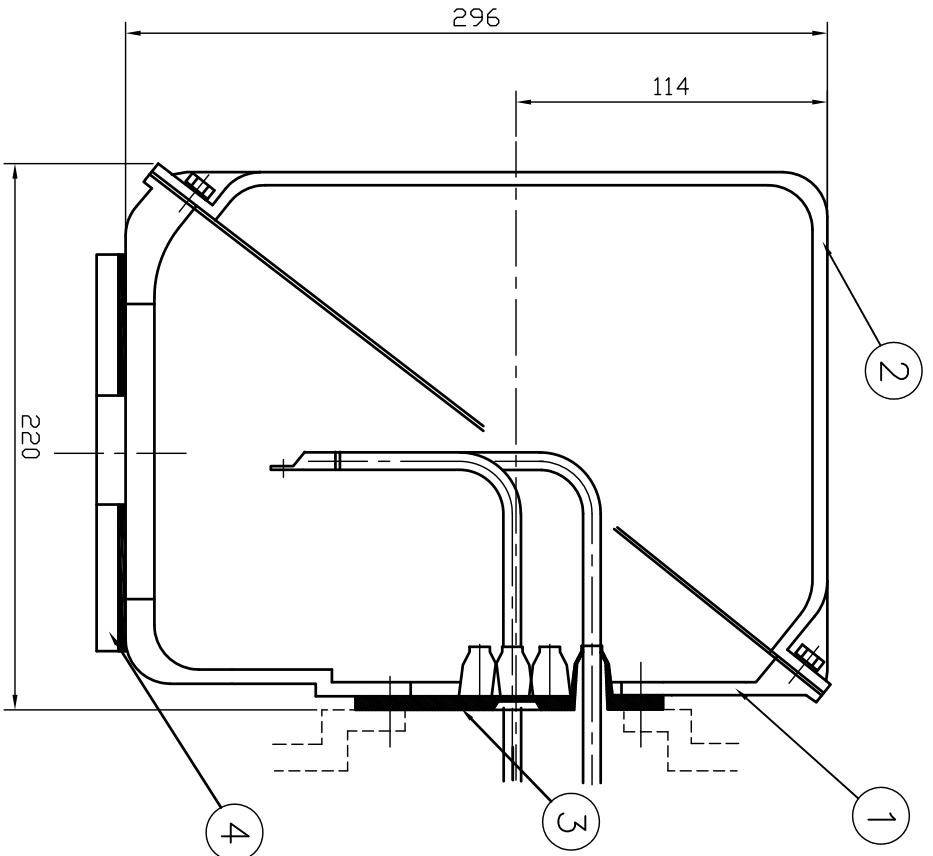
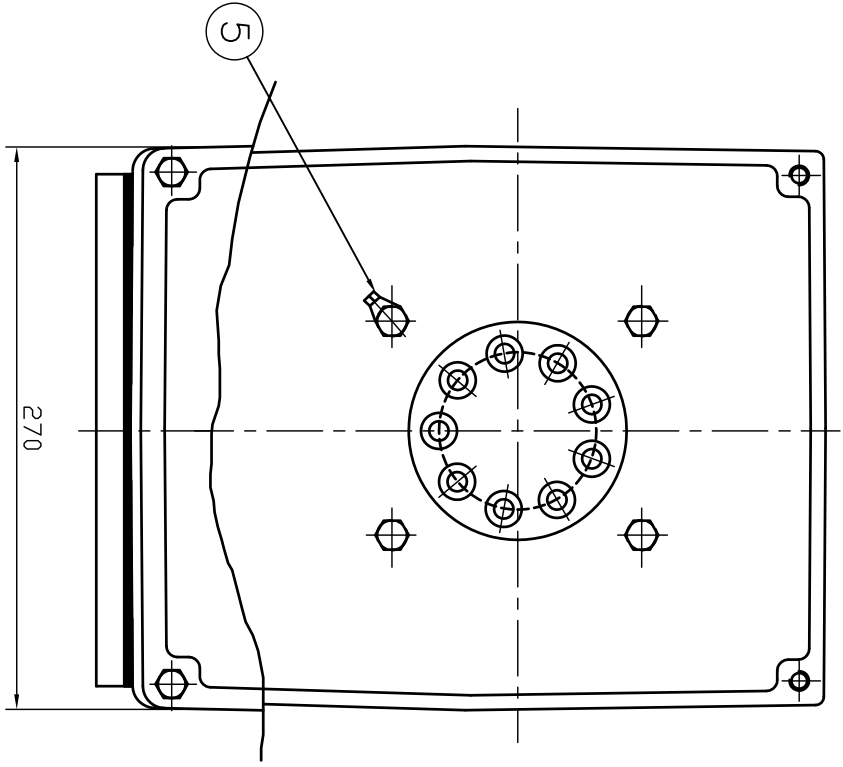
CENTER HEIGHT	280	$\begin{matrix} 0 \\ -1.0 \end{matrix}$
RABBET DIAMETER	ø550	$\pm 0.022$
SHAFT DIAMETER	ø55	$\begin{matrix} +0.030 \\ +0.011 \end{matrix}$
KEYWAY WIDTH	16	$\begin{matrix} -0.018 \\ -0.061 \end{matrix}$
KEYWAY DEPTH	6	$\begin{matrix} +0.2 \\ 0 \end{matrix}$

2.The type (1)-"TNB , TDB" is for HHI's standard products and it can be changed for customer's requirements or detail designing.



**VIEW "A"**  
SCALE 4/1

				TEFC STANDARD		
APPD BY	KANG K.J.	UNIT	MM	SUBJECT	KS Fr.280M TEFC	
CHKD BY	KIM O.J.	SCALE	1/15			CAD PROJ \ FILE
CHKD BY	LEE N.D.	PROJEC'N	3rd Angle	TITLE <b>OUTLINE</b> THREE-PHASE INDUCTION MOTOR		
DSND BY	KIM RYANG GYU	DATE	2007.03.23			MMSTDMTR/TJ8MCC50
				REF. NO	L2-Series	Sheet No. of
				DWG NO	TJ8MCC50	Revision No. 0



REV	DATE	CONTENTS	REV'D BY	CHK'D BY	Q.P. CHK	APP'D BY
1						

1	EARTH TERMINAL LUG											
1	CABLE ENTRY PLATE											
1	GASKET	NBR										
1	TERMINAL BOX COVER	CAST IRON										
1	TERMINAL BOX BODY	CAST IRON										

QTY	DESCRIPTION	MATERIAL	DIMENSION	WEIGHT	PART NO.	REMARK	NO.
	APP'D BY	권진오	UNIT	MM			
	Q.P. CHK	주영철	SCALE	NONE			
	CHK'D BY	권오철	PROJEC'N	3 레벨(3rd Angle)			
	DSND BY	김헌태	DATE	92.06.05			

REF. NO	DWG NO	SHEET NO	TOTAL SHEETS
	3M-016882		

TITLE	SUBJECT	FILE NO.
TERMINAL BOX ASS'Y	HLA6 - 250,280Fr.	T-BOX-M \ 38016882