





# PERFORMANCE CURVE

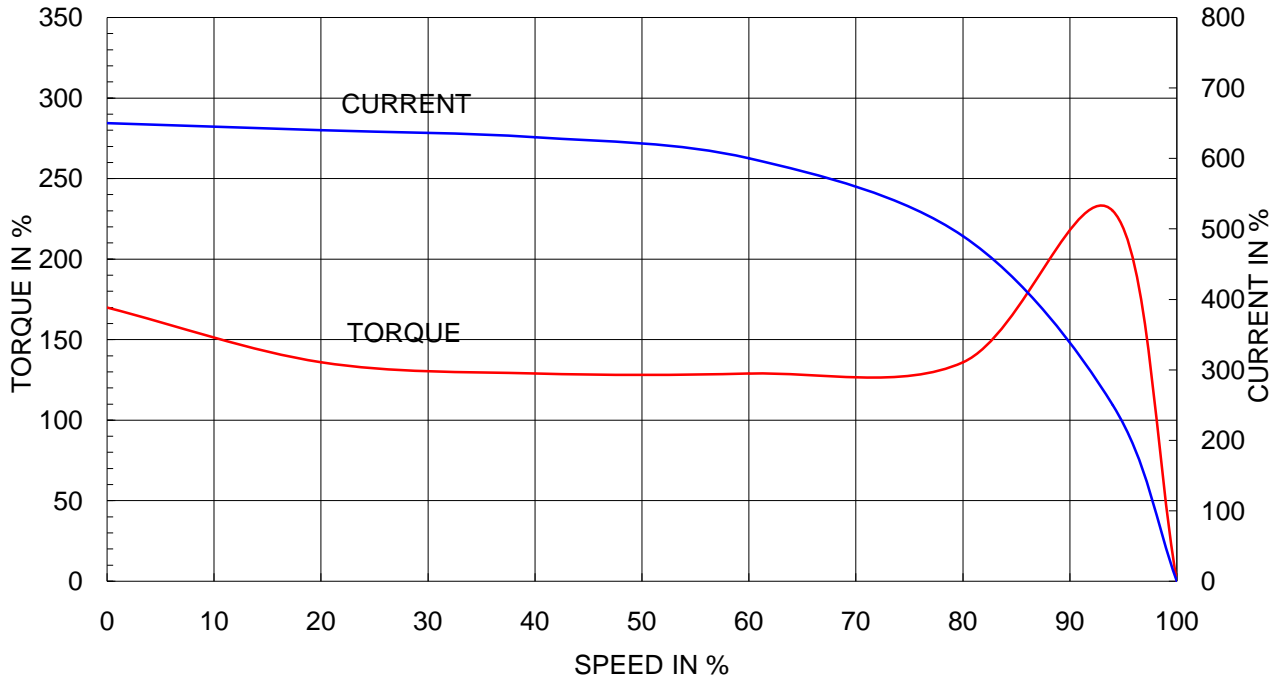
CURVE NO.

P-HS-160/6

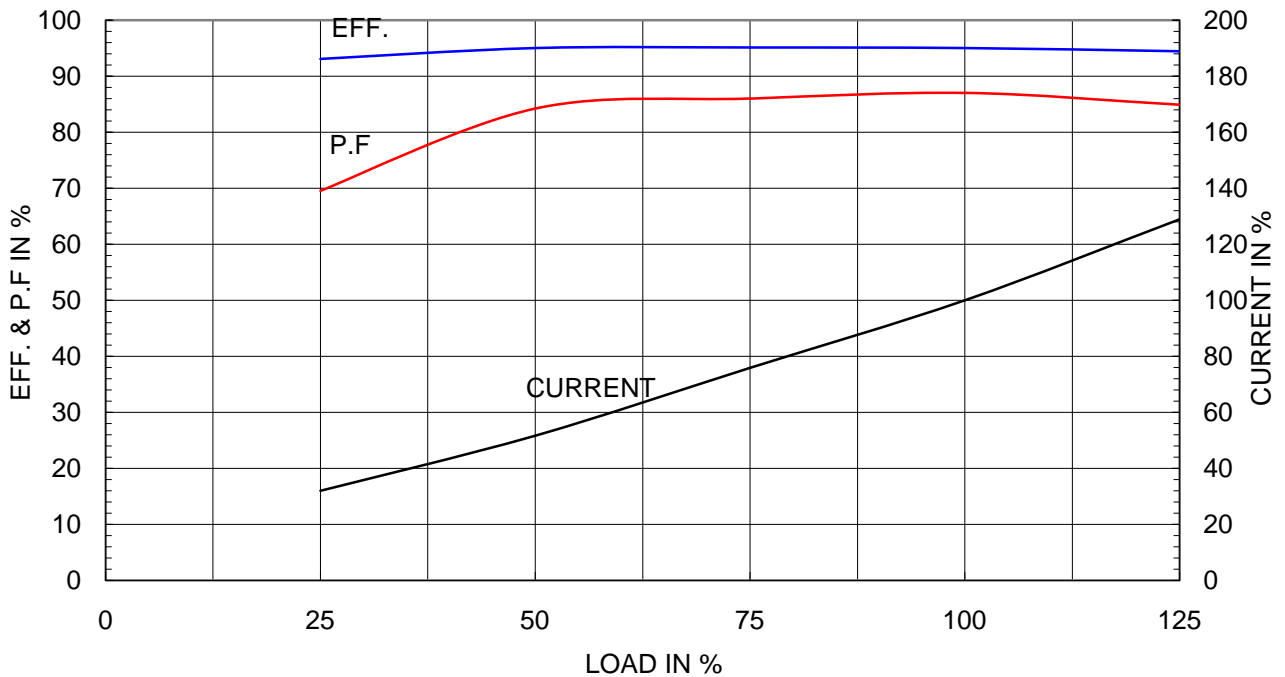
Type	: HL-XP(280LL)
Full Load Torque	: 131.5 Kg.m
Motor moment of Inertia (J)	: 7.288 Kg.m <sup>2</sup>
Load moment of Inertia (J)	: 224.250 Kg.m <sup>2</sup>

160 kW	6 P	60 Hz	
Speed at Full Load :		1185 RPM	
Rated Voltage	440V	380V	220V
Full Load Current	254.0A	294.1A	508.0A

SPEED VS TORQUE & CURRENT CURVE



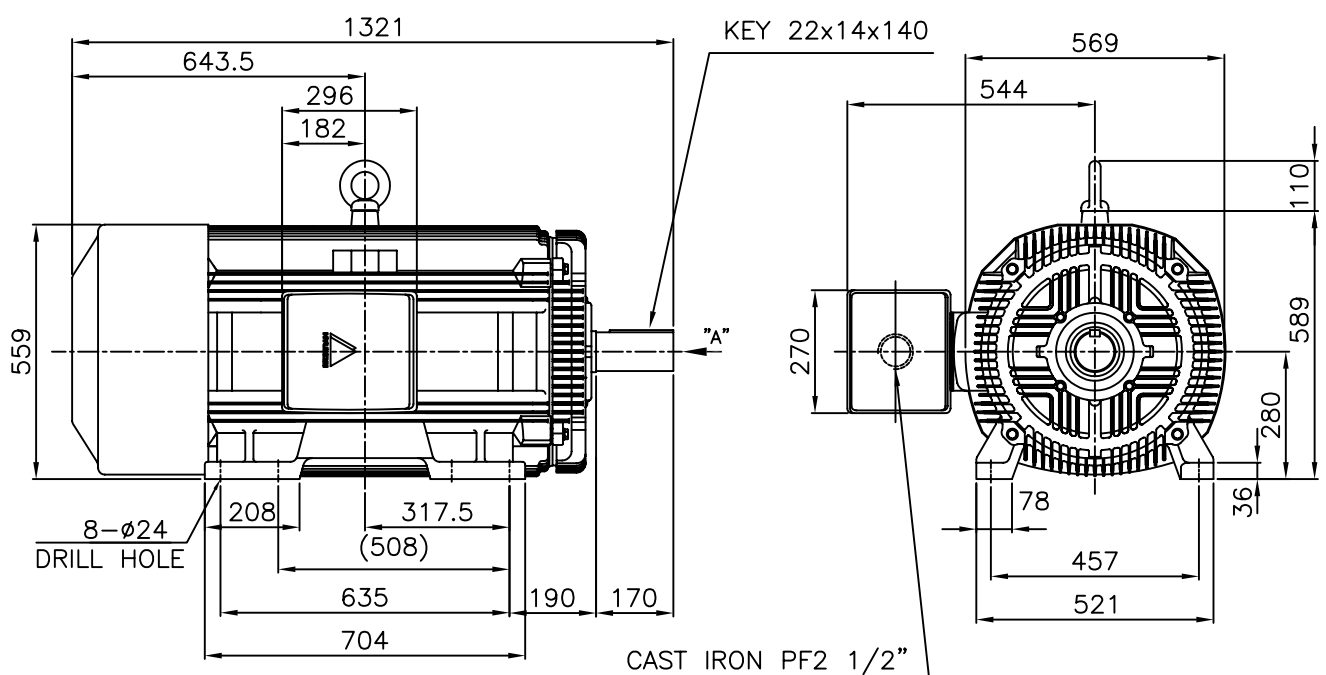
OUTPUT VS EFF., P.F & CURRENT CURVE



본 도면은 현대중공업(주) 재산이므로  
허가없이 복사할 수 없음 (취급주의)

THIS DRAWING IS PROPRIETARY TO HHI. NO PART OF THIS DRAWING  
MAY BE REPRODUCED WITHOUT THE PERMISSION OF HHI.

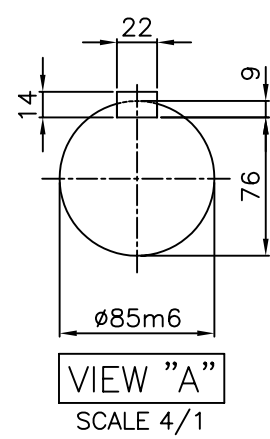
		<h1>TEFC</h1>		<b>TYPE</b> (1) ENB , EDB CAST IRON FRAME
		<b>THREE PHASE INDUCTION MOTOR</b>		



**NOTE**

1.TOLERANCE :

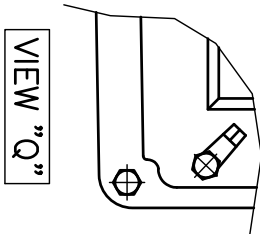
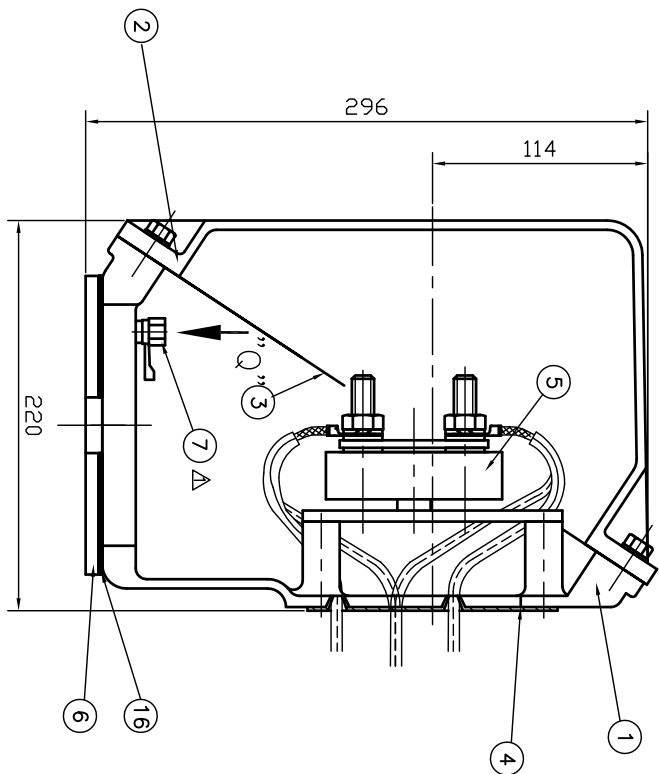
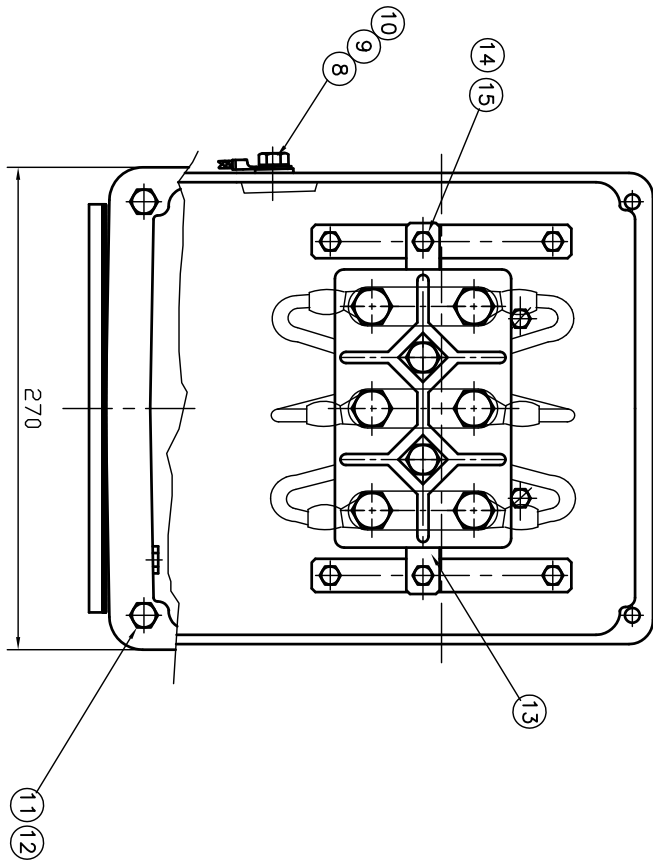
CENTER HEIGHT	280	$0_{-1.0}$
BASE HOLE	$\phi 24$	$+0.43_0$
SHAFT DIAMETER	$\phi 85$	$+0.035_{+0.013}$
KEYWAY WIDTH	22	$-0.022_{-0.074}$
KEYWAY DEPTH	9	$+0.2_0$
KEY WIDTH	22	$0_{-0.052}$
KEY HEIGHT	14	$0_{-0.110}$



2.The type (1)-"ENB , EDB" is for HHI's standard products and it can be changed for customer's requirements or detail designing.

Ex e II T3
TEFC STANDARD
CAD PROJ \ FILE
MMSTDMTR/EJ8XAP51

APPD BY	KANG K.J.	UNIT	MM	SUBJECT	KS Fr.280LL TEFC	<b>OUTLINE</b> THREE-PHASE INDUCTION MOTOR
CHKD BY	KIM O.J.	SCALE	1/17	TITLE		
CHKD BY	LEE N.D.	PROJEC'N	3rd Angle	REF. NO	L2-Series	Sheet No. of
DSND BY	KIM RYANG GYU	DATE	2007.03.23	DWG NO	EJ8XAP51	Revision No. 0



Q'TY	DESCRIPTION	MATERIAL	DIMENSION	REMARK	PART
1	PACKING	NBR			16
2	SPRING WASHER	SUP3			15
2	HEX BOLT	S45C			14
1	BASE PLATE	SS41			13
4	SPRING WASHER	SUP3			12
4	HEX. BOLT	S45C			11
1	EARTH TERMINAL LUG	STD			10
1	SPRING WASHER	SUP3			9
1	EARTH BOLT	BRASS			8
1	EARTH TERMINAL LUG	STD			7
1	CABLE ENTRY PLATE	SS41			6
1	TERMINAL BLOCK				5
1	GASKET	NBR			4
1	PACKING	NBR			3
1	T/B COVER	CAST IRON	2M-003339		2
1	T/B BODY	CAST IRON	2M-003340		1

REV	DATE	CONTENTS	REV'D BY	Q.P. CHK	APP'D BY
Δ	98.10.01	EARTH TER. LUG REVISED	AHN H.K	KIM O.J	KANG K.J

Q'TY	DESCRIPTION	MATERIAL	DIMENSION	WEIGHT	PART NO.	REMARK	NO.
APP'D BY	KANG K.J	UNIT	MM				
Q.P. CHK	KIM O.J	SCALE	1/3				
CHK'D BY		PROJEC'N	3 <sup>rd</sup> (3rd Angle)				
DSND BY	HAN K.J	DATE	96.08.08				
SUBJECT				TITLE			
HLA6 250.280FR				CAST IRON WITH T/BLOCK			
CAD PROJ FILE				TERMINAL BOX ASS'Y			
T-BOX-M/3R051288							
DWG NO	REF. NO	SHEET NO. of		PART NO.		REVISION NO. of	
3M-051288		1				1	

